

IAP
Main
Sourdough
WA-NCP-000262
8/29/2023
 6221 acres at 08/27/23 @2123

- Other Property
- Pump
- Water Tank
- Helispot
- ⌘ Division Break
- Drop Point
- ▲ Completed Fuel Break
- H- Completed Hand Line
- M- Completed Mixed Construction Line
- R- Completed Road as Line
- Access or Improved Road
- Highlighted Feature
- Other
- Escape Route
- Retardant Drop
- Contained
- Uncontained
- Local Connector
- Local Road
- Tunnel
- Trail



8/28/2023 2017
 Acres from IR and GPS



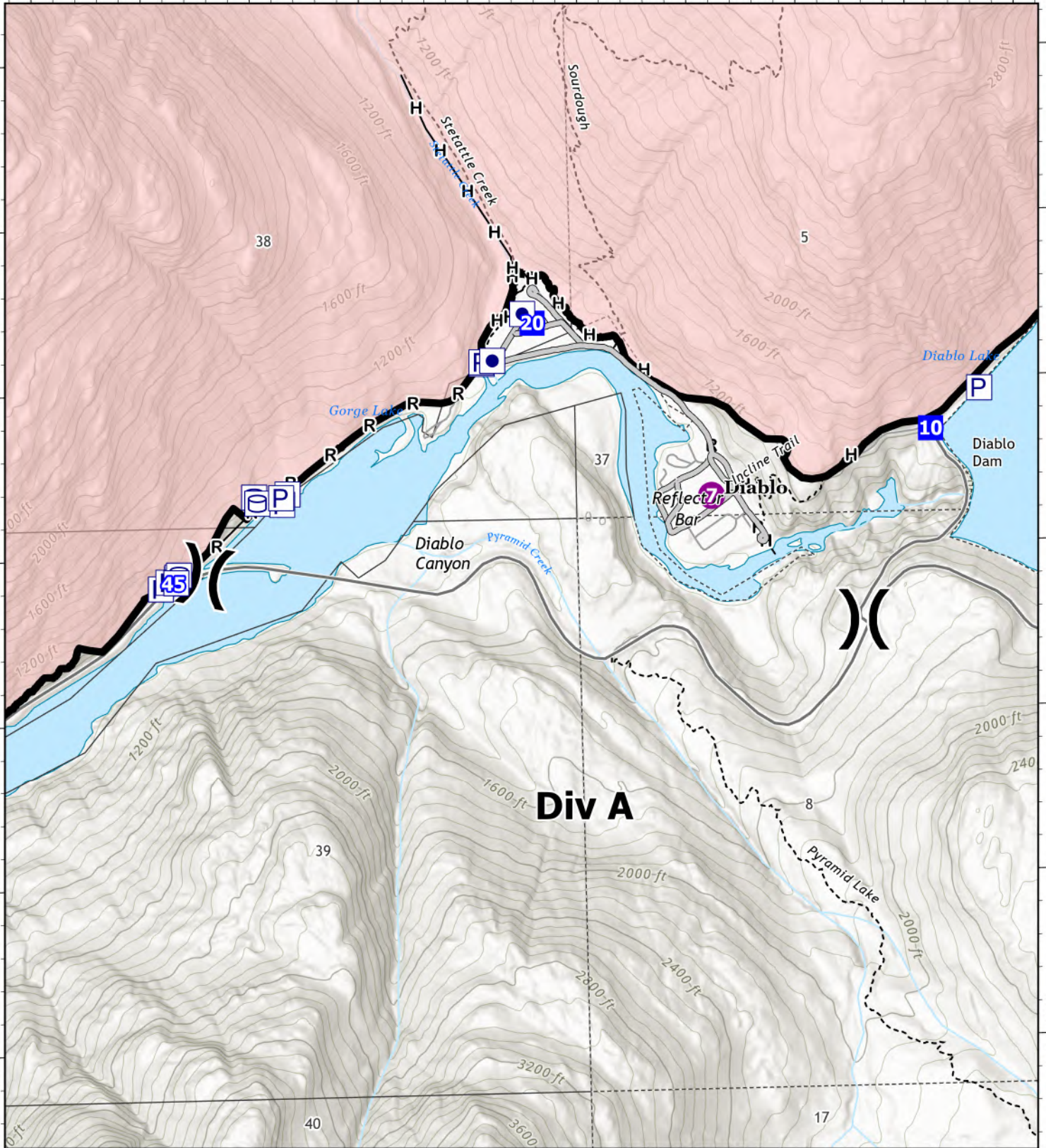
North American Datum
 Lat/Long Grid

121°10'W

121°8'W

48°42'N

48°42'N



Div A

121°10'W

121°8'W

IAP
Div A
Sourdough
WA-NCP-000262
8/29/2023
 6221 acres at 08/27/23 @2123

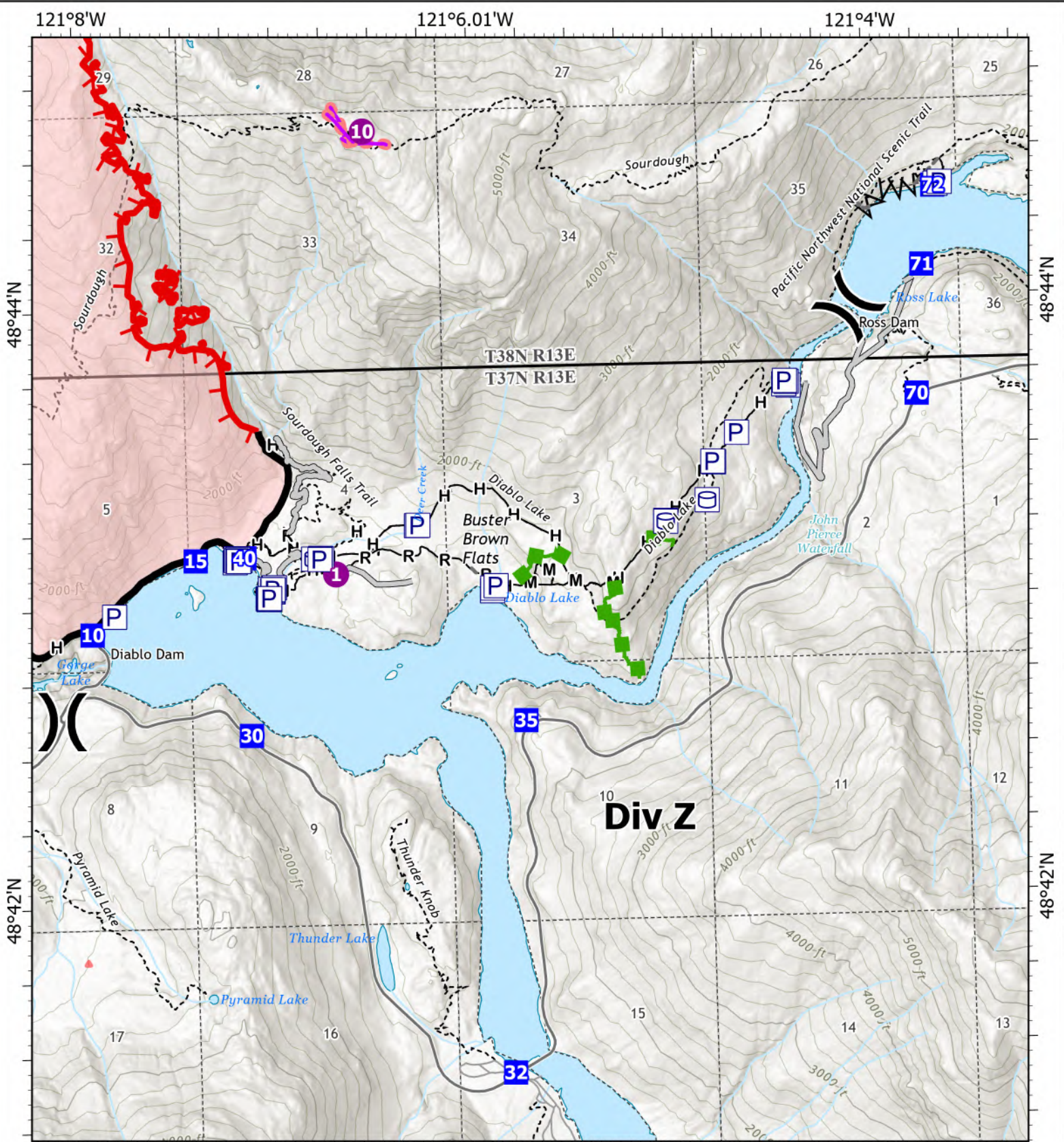
- Other Property
- Pump
- Water Tank
- Helispot
- Division Break
- Drop Point
- Completed Hand Line
- Completed Road as Line
- Access or Improved Road
- Contained
- Local Connector
- Local Road
- Trail

8/28/2023 2017
 Acres from IR and GPS



0 0.13 0.25 0.5 Miles

North American Datum
 Lat/Long Grid



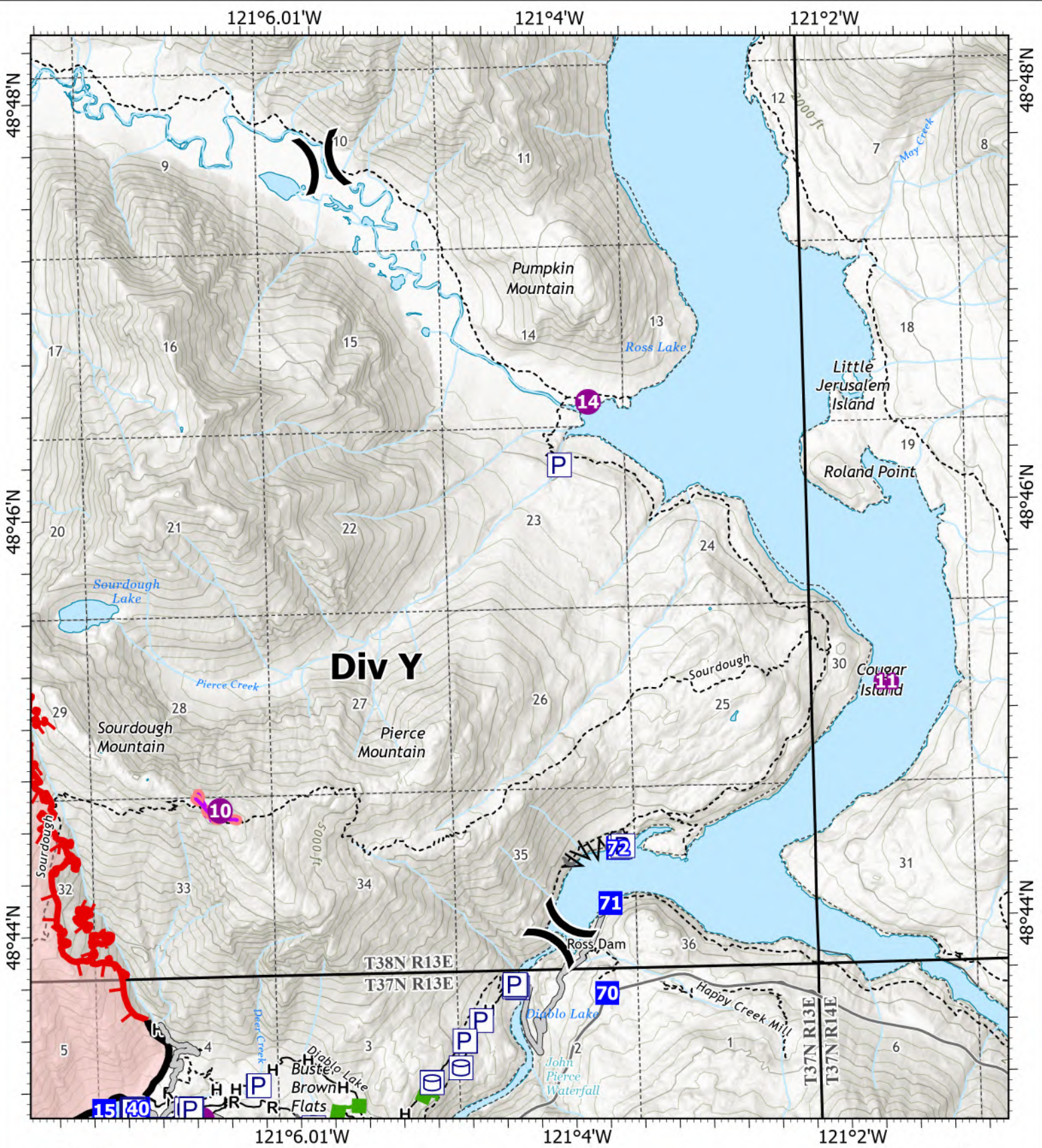
IAP
Div Z
Sourdough
WA-NCP-000262
8/29/2023
 6221 acres at 08/27/23 @2123

- P Pump
- W Water Tank
- Helispot
- X Division Break
- Drop Point
- Completed Fuel Break
- Completed Hand Line
- Completed Mixed Construction Line
- Completed Road as Line
- Access or Improved Road
- Highlighted Feature
- Other
- Escape Route
- Retardant Drop
- Contained
- Uncontained
- Local Connector
- Local Road
- Trail



0 0.28 0.55 1.1 Miles
 North American Datum Lat/Long Grid

8/28/2023 2017
 Acres from IR and GPS



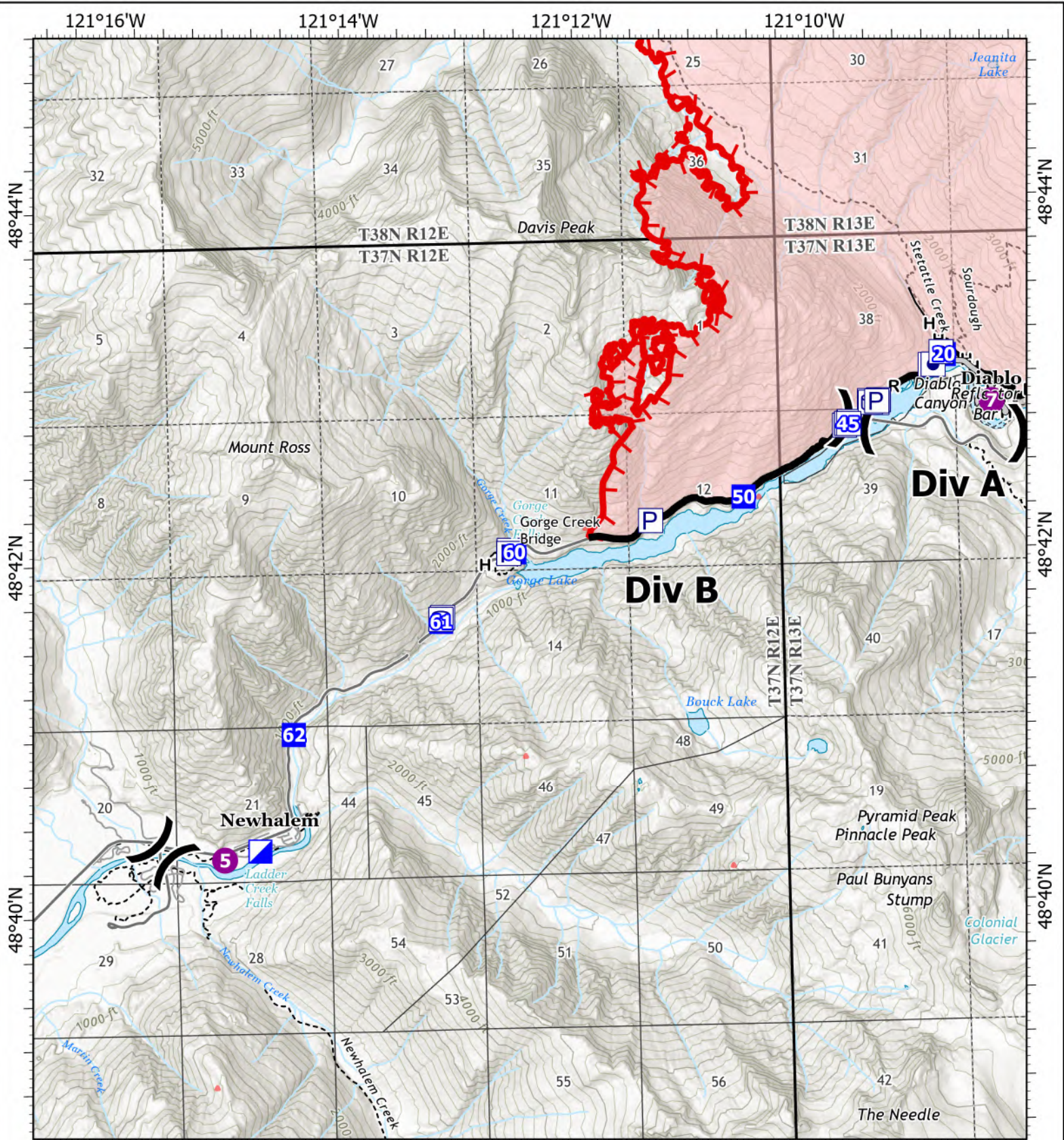
IAP
Div Y
Sourdough
WA-NCP-000262
8/29/2023
 6221 acres at 08/27/23 @2123

- P Pump
- W Water Tank
- Helispot
- Division Break
- Drop Point
- Completed Fuel Break
- Completed Hand Line
- Completed Mixed Construction Line
- Completed Road as Line
- Access or Improved Road
- Other
- Escape Route
- Retardant Drop
- Contained
- Uncontained
- Local Connector
- Local Road
- Trail



0 0.4 0.8 1.6 North American Datum Miles Lat/Long Grid

8/28/2023 2017 Acres from IR and GPS

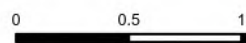


IAP
Div B
Sourdough
WA-NCP-000262
8/29/2023
 6221 acres at 08/27/23 @2123

- Other Property
- Drop Point
- Local Connector
- Ⓟ Pump
- H— Completed Hand Line
- Local Road
- Ⓜ Water Tank
- R— Completed Road as Line
- ⤵ Tunnel
- Helispot
- Access or Improved Road
- - - Trail
- ⌘ Division Break
- Contained
- Uncontained
- Incident Command Post



8/28/2023 2018
 Acres from IR and GPS



2 North American Datum
 Miles/Lat/Long Grid