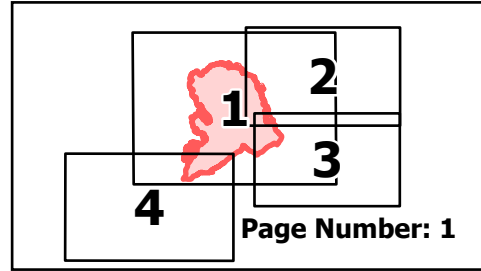


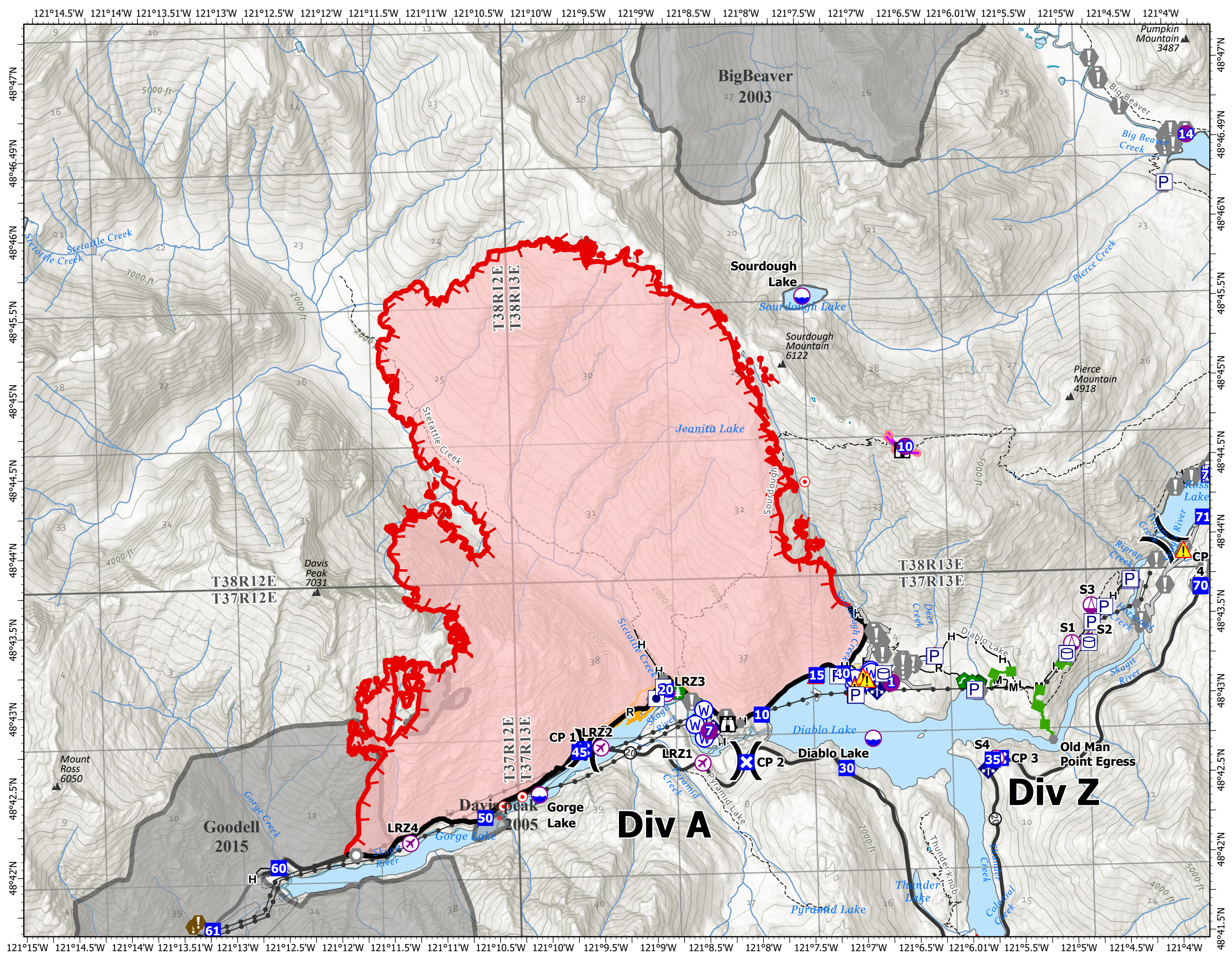
Operations

Sourdough
WA-NCP-000262
8/29/2023

6221 acres at 08/27/23 @2123



- Other Property
- Pump
- Water Tank
- Aerial Hazard
- UAS Launch and Recovery
- Dip Site
- Helispot
- Sling Site
- Division Break
- Drop Point
- Closure
- Lookout
- Hot Spot - Spot Fire
- Value at Risk
- Other
- Landmark
- Gate
- Bridge
- Hazard Tree
- Culvert
- Mobile Weather Unit
- Hazard
- Water Source
- Historic Structure
- Mountain Peaks (ft)
- Contained
- Uncontained
- Completed Fuel Break
- Completed Hand Line
- Completed Mixed Construction Line
- Completed Road as Line
- Access or Improved Road
- Other
- Escape Route
- Retardant Drop
- Transmission Lines
- Highways
- Roads
- Trails
- Fuels Treatments
- Fire History
- Seattle City Light Property



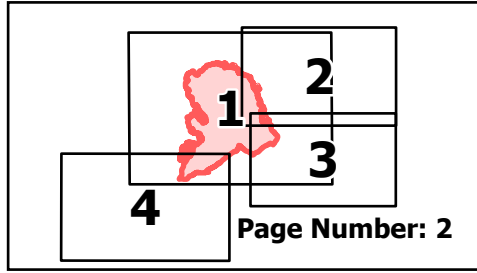
North American 1983 Datum.
Lat/Long Grid

0 0.25 0.5 1 Miles

Operations

Sourdough
WA-NCP-000262
8/29/2023

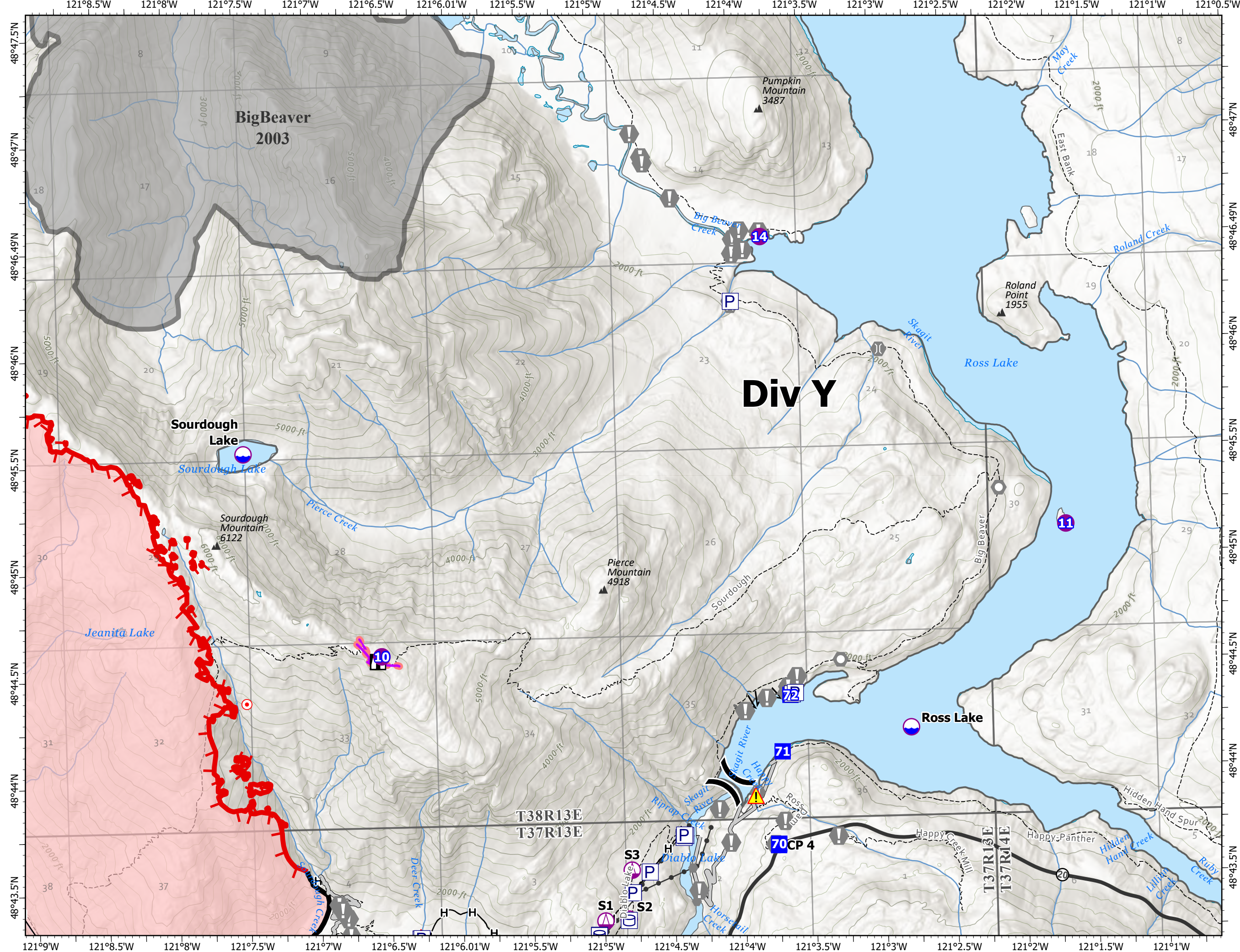
6221 acres at 08/27/23 @2123



- Pump
- Water Tank
- Dip Site
- Helispot
- Sling Site
- Division Break
- Drop Point
- Closure
- Lookout
- Hot Spot - Spot Fire
- Value at Risk
- Other
- Landmark
- Bridge
- Hazard
- Historic Structure
- Mountain Peaks (ft)
- Contained
- Uncontained
- Completed Fuel Break
- Completed Hand Line
- Access or Improved Road
- Other
- Retardant Drop
- Transmission Lines
- Highways
- Roads
- Trails
- Fire History

North American 1983 Datum.
Lat/Long Grid

0 0.25 0.5 Miles

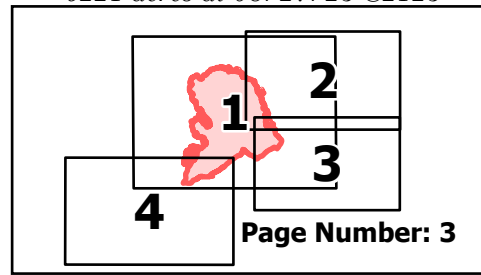


Operations

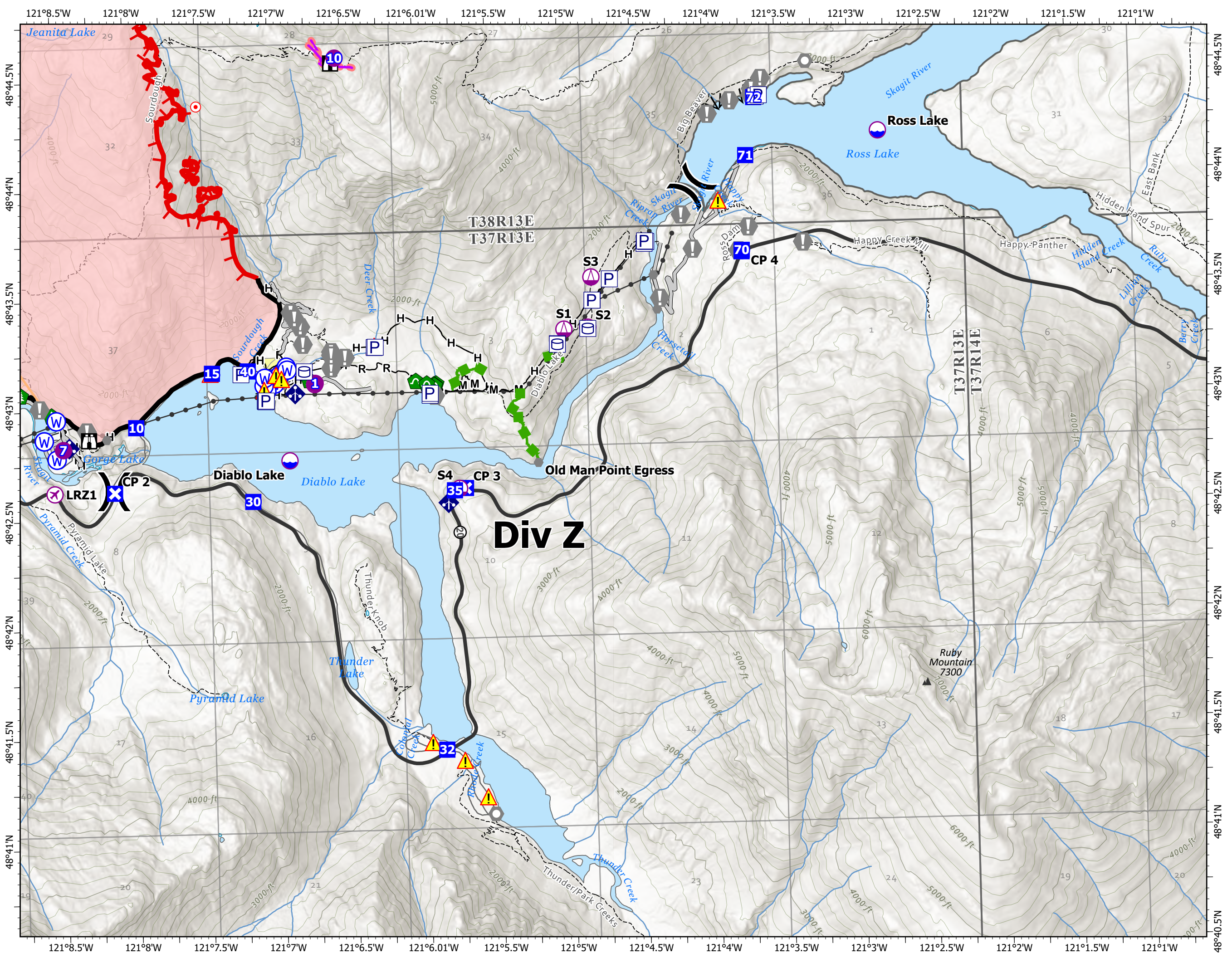
Sourdough
WA-NCP-000262

8/29/2023

6221 acres at 08/27/23 @2123



- Pump
- Water Tank
- Aerial Hazard
- UAS Launch and Recovery
- Dip Site
- Helispot
- Sling Site
- Division Break
- Drop Point
- Closure
- Lookout
- Hot Spot - Spot Fire
- Value at Risk
- Other
- Landmark
- Gate
- Bridge
- Hazard Tree
- Culvert
- Mobile Weather Unit
- Hazard
- Water Source
- Historic Structure
- Mountain Peaks (ft)
- Contained
- Uncontained
- Completed Fuel Break
- Completed Hand Line
- Completed Mixed Construction Line
- Completed Road as Line
- Access or Improved Road
- Other
- Escape Route
- Retardant Drop
- Transmission Lines
- Highways
- Roads
- Trails
- Fuels Treatments
- Seattle City Light Property



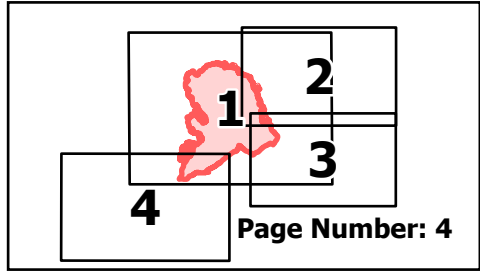
North American 1983 Datum.
Lat/Long Grid

0 0.25 0.5 Miles

Operations

Sourdough
WA-NCP-000262
8/29/2023

6221 acres at 08/27/23 @2123



- Other Property
- UAS Launch and Recovery
- Dip Site
- Helispot
- Division Break
- Incident Command Post
- Drop Point
- Closure
- Hot Spot - Spot Fire
- Other
- Landmark
- Gate
- Historic Structure
- Mountain Peaks (ft)
- Contained
- Uncontained
- Completed Hand Line
- Completed Road as Line
- Transmission Lines
- Highways
- Roads
- Trails
- Fire History
- Seattle City Light Property



North American 1983 Datum.
Lat/Long Grid

0 0.25 0.5 1 Miles

