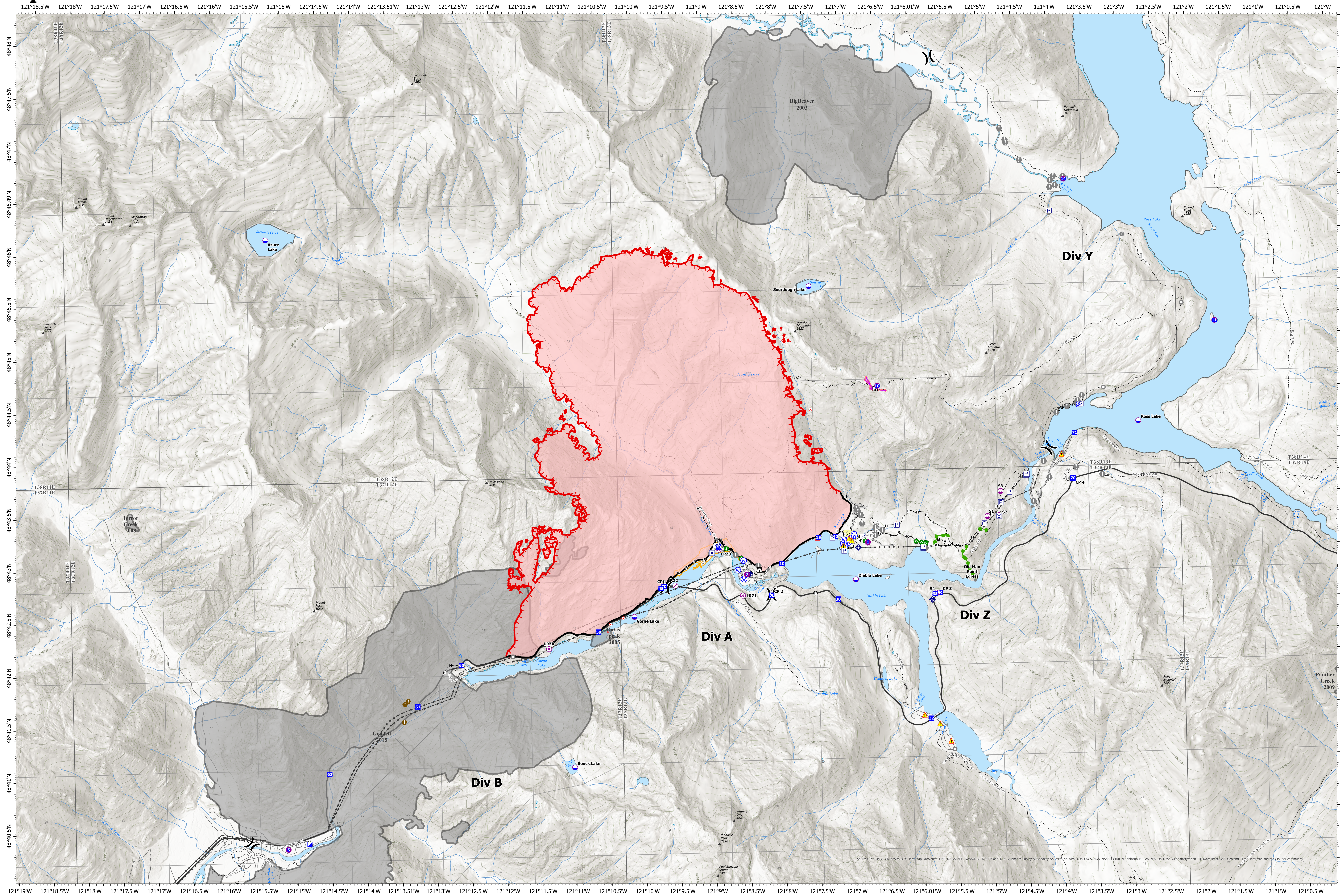


Operations



Sourdough
WA-NCP-000262
8/29/2023

6221 acres at 08/27/23 @2123

8/28/2023 2042
 Acres from IR and GPS

- | | | | | | | | | | |
|---------------------------|-------------------------|------------------------|-----------------------|----------------------|------------------------|-------------------------------------|-----------------------|----------------------|-------------------------------|
| ● Aerial Hazard | X Division Break | ● Hot Spot - Spot Fire | ● Bridge | ● Water Source | — Contained | M Completed Mixed Construction Line | ● Highlighted Feature | — Roads | 🏠 Seattle City Light Property |
| ● UAS Launch and Recovery | ▢ Incident Command Post | ● Value at Risk | ● Hazard Tree | ● Other Property | — Uncontained | R Completed Road as Line | — Escape Route | — Trails | |
| ● Dip Site | ● Drop Point | ● Other | ● Culvert | ● Pump | — Completed Fuel Break | — Access or Improved Road | — Retardant Drop | — Transmission Lines | |
| ● Helispot | ▢ Closure | ● Landmark | ● Mobile Weather Unit | ● Water Tank | — Completed Hand Line | | — Fuels Treatments | — Fire History | |
| ● Sling Site | ▢ Lookout | ● Gate | ▲ Hazard | ● Historic Structure | | | — Highways | | |

