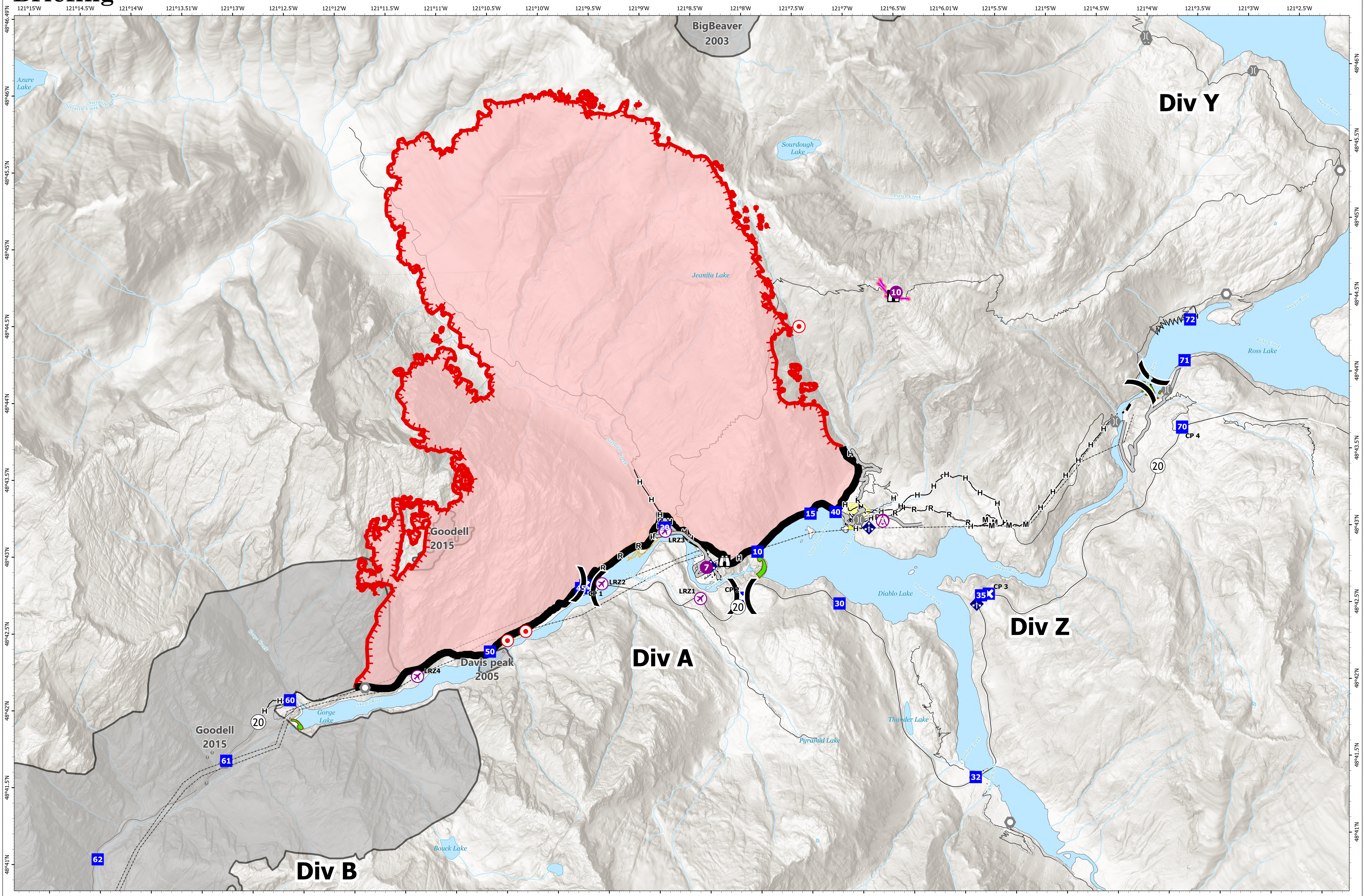


# Briefing



**Sourdough**  
**WA-NCP-000262**  
**8/29/2023**  
6234 acres at 08/28/23 @2346  
8/29/2023 0937

- |                            |                                 |                                   |                    |                             |
|----------------------------|---------------------------------|-----------------------------------|--------------------|-----------------------------|
| Aerial Hazard              | Lookout                         | Completed Fuel Break              | Other              | Seattle City Light Property |
| UAS Launch & Recovery Zone | Hot Spot - Spot Fire            | Completed Hand Line               | Retardant Drop     | Dam                         |
| Helispot                   | Tunnel                          | Completed Mixed Construction Line | Historic Structure | Paved Road                  |
| Division Break             | Bridge                          | Completed Road as Line            | Transmission Lines | Trails                      |
| Drop Point                 | Mobile Weather Unit Label Point | Access or Improved Road           | Fuels Treatments   | Fire History                |
| Closure                    |                                 | Highlighted Feature               |                    |                             |

NORTH AMERICAN 1983 DATUM. LatLong Grid

