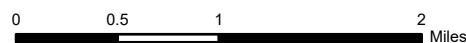


**IAP**  
**Main**  
**Sourdough**  
**WA-NCP-000262**  
**8/29/2023**  
**6234 acres at 08/28/23 @2346**

- |                      |                                   |                 |
|----------------------|-----------------------------------|-----------------|
| Other Property       | Completed Hand Line               | Retardant Drop  |
| Pump                 | Completed Mixed Construction Line | Contained       |
| Water Tank           | Completed Road as Line            | Uncontained     |
| Helispot             | Access or Improved Road           | Local Connector |
| Division Break       | Highlighted Feature               | Local Road      |
| Drop Point           | Other                             | Tunnel          |
| Completed Fuel Break | Escape Route                      | Trail           |

8/29/2023 0911  
 Acres from IR and GPS



North American Datum  
 Lat/Long Grid

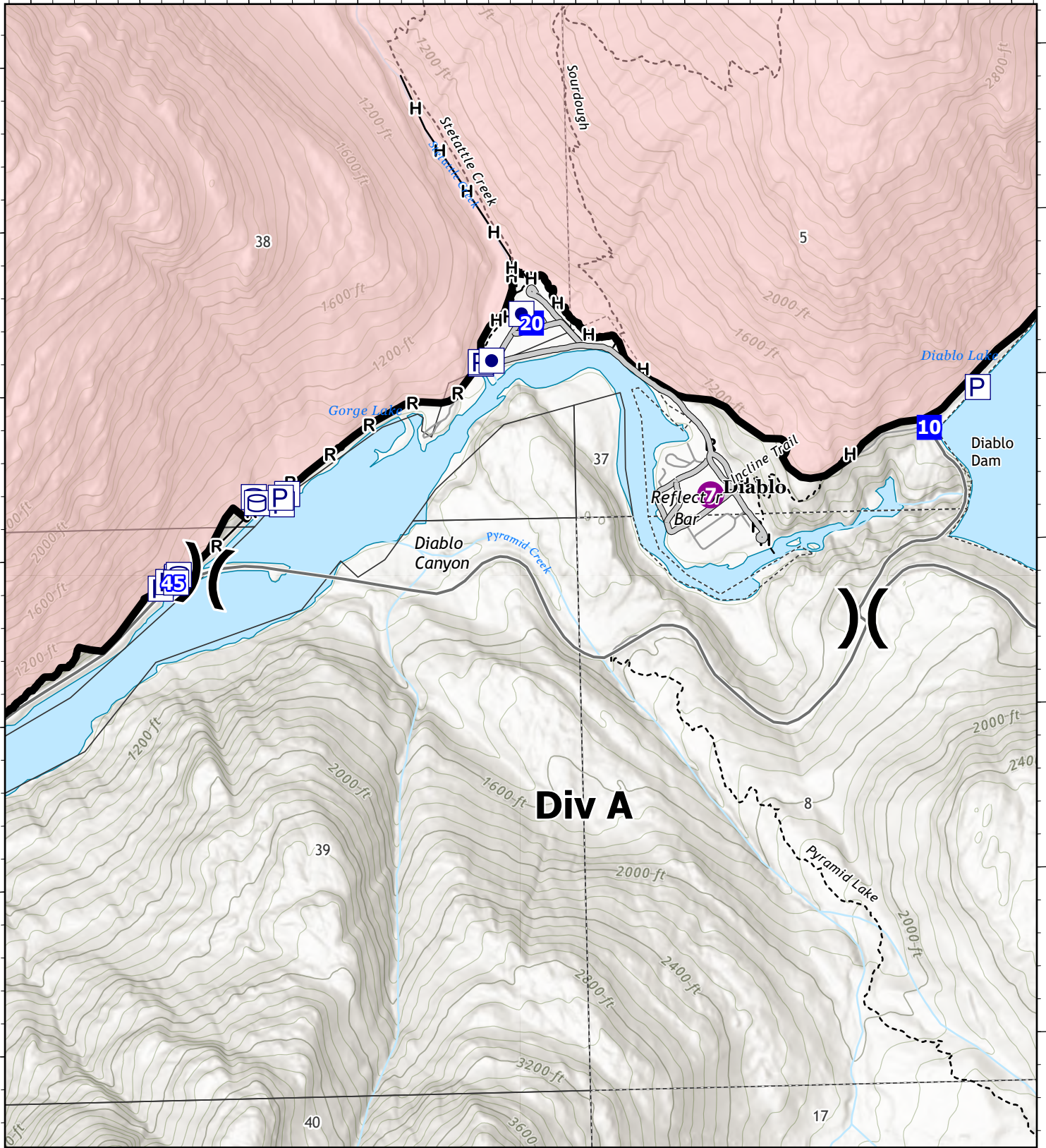


121°10'W

121°8'W

48°42'N

48°42'N



**Div A**

121°10'W

121°8'W

**IAP**  
**Div A**  
**Sourdough**  
**WA-NCP-000262**  
**8/29/2023**  
**6234 acres at 08/28/23 @2346**

- Other Property
- Pump
- Water Tank
- Helispot
- Division Break
- Drop Point
- Completed Hand Line
- Completed Road as Line
- Access or Improved Road
- Contained
- Local Connector
- Local Road
- Trail

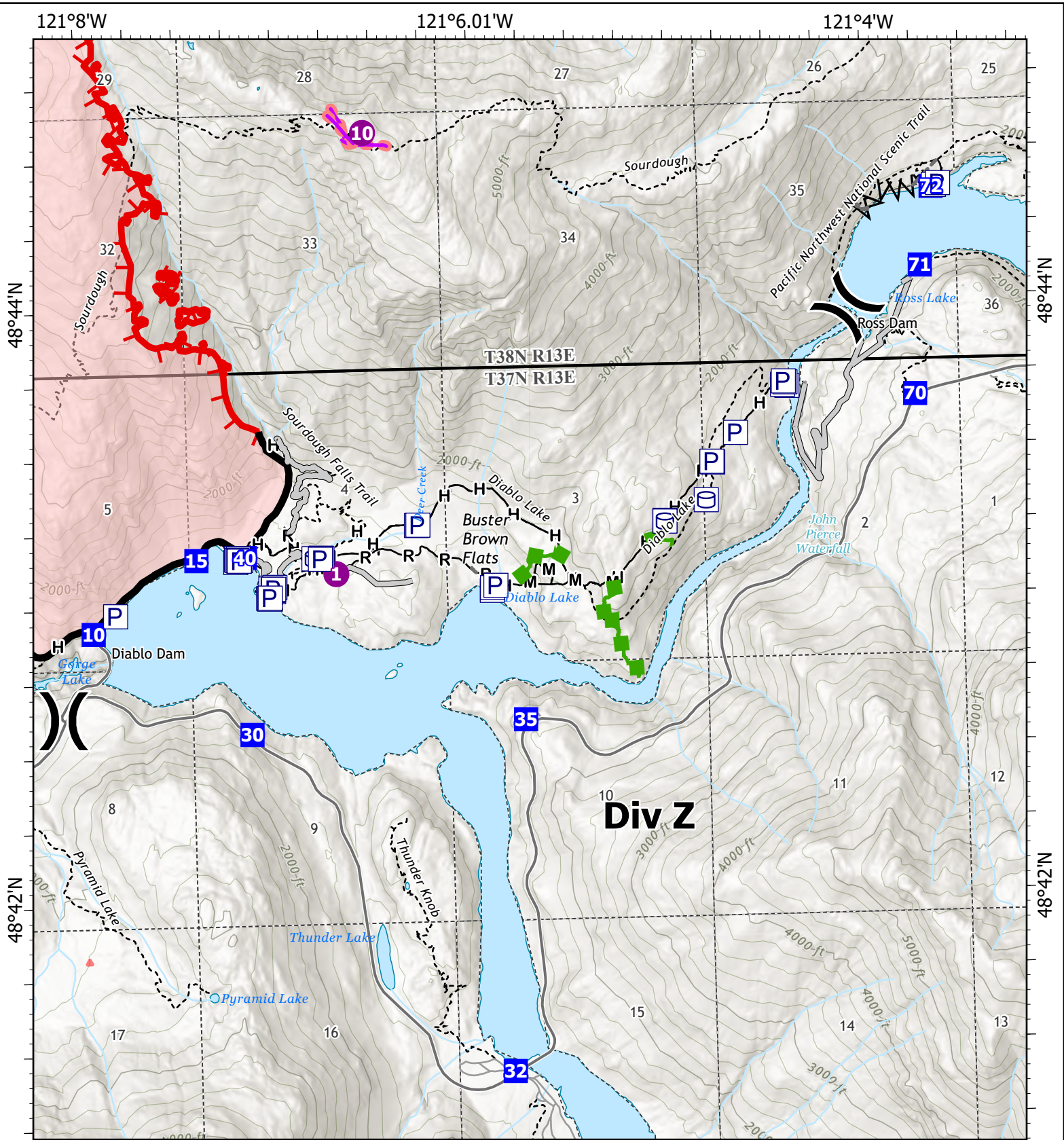
8/29/2023 0911  
 Acres from IR and GPS

0 0.13 0.25 0.5 Miles

North American Datum  
 Lat/Long Grid







**IAP**  
**Div Z**  
**Sourdough**  
**WA-NCP-000262**  
**8/29/2023**  
**6234 acres at 08/28/23 @2346**

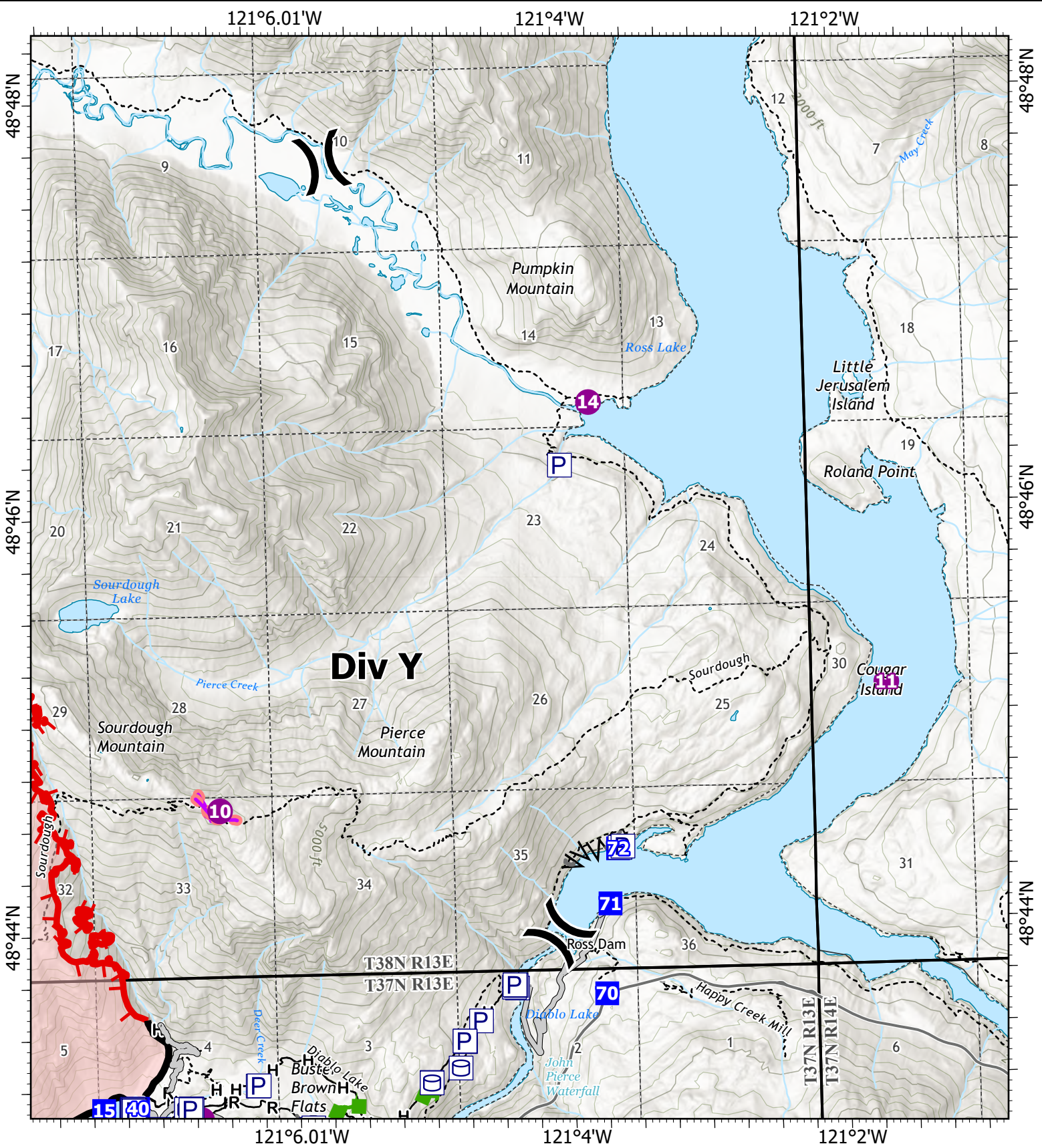
- P Pump
- W Water Tank
- Helispot
- Division Break
- Drop Point
- Completed Fuel Break
- Completed Hand Line
- Completed Mixed Construction Line
- Completed Road as Line
- Access or Improved Road
- Highlighted Feature
- Other
- Escape Route
- Retardant Drop
- Contained
- Uncontained
- Local Connector
- Local Road
- Trail

8/29/2023 0911  
 Acres from IR and GPS

0 0.28 0.55 1.1 Miles  
 North American Datum  
 Lat/Long Grid







**IAP**  
**Div Y**  
**Sourdough**  
**WA-NCP-000262**  
**8/29/2023**  
**6234 acres at 08/28/23 @2346**

- P Pump
- W Water Tank
- Helispot
- X Division Break
- Drop Point
- A Completed Fuel Break
- Completed Hand Line
- Completed Mixed Construction Line
- Completed Road as Line
- Access or Improved Road
- Other
- Escape Route
- Retardant Drop
- Contained
- Uncontained
- Local Connector
- Local Road
- Trail

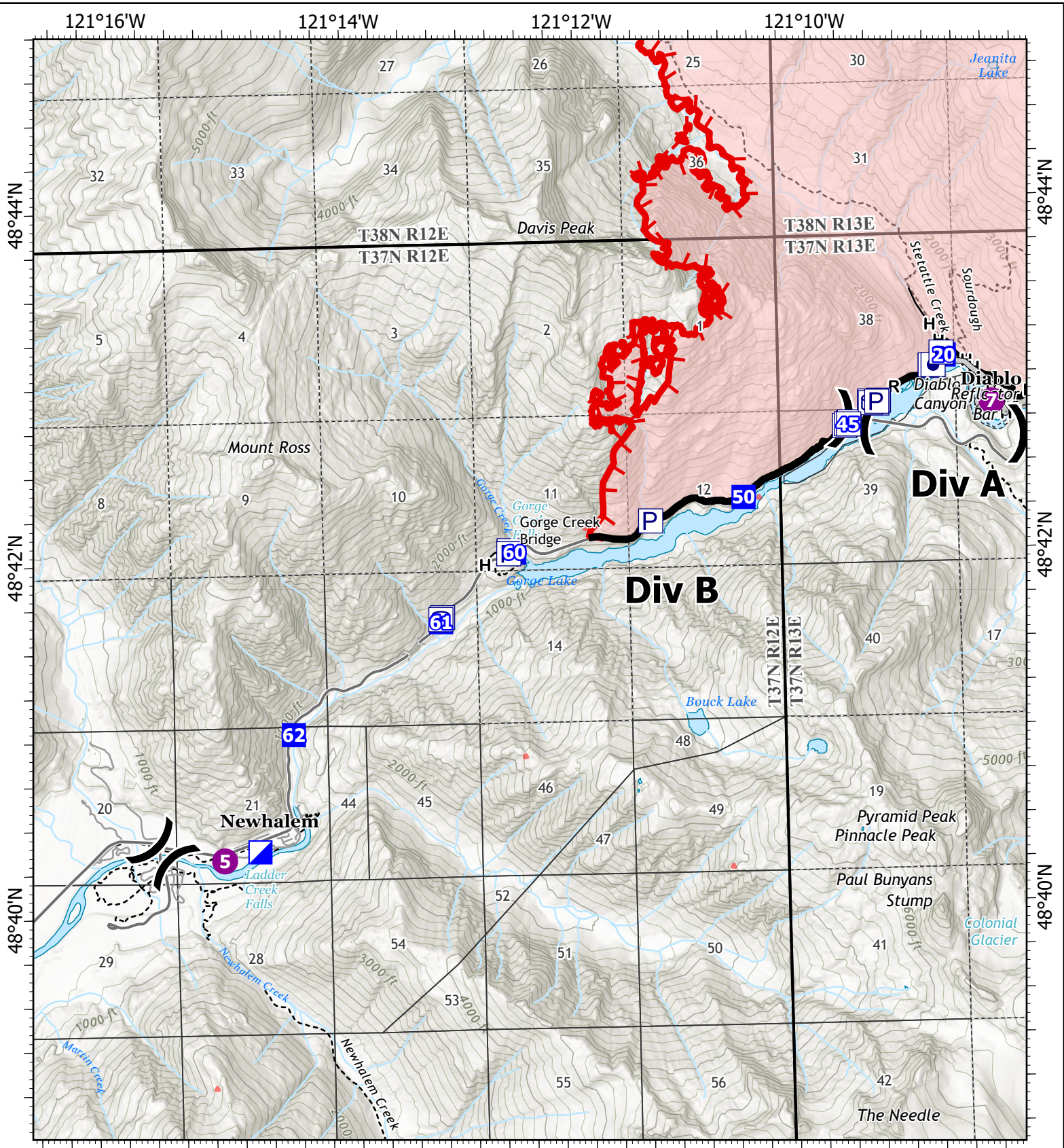




0 0.4 0.8 1.6 North American Datum Miles Lat/Long Grid

8/29/2023 0912  
 Acres from IR and GPS





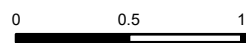
**IAP**  
**Div B**  
**Sourdough**  
**WA-NCP-000262**  
**8/29/2023**  
**6234 acres at 08/28/23 @2346**

- |                       |                         |                 |
|-----------------------|-------------------------|-----------------|
| Other Property        | Drop Point              | Local Connector |
| Pump                  | Completed Hand Line     | Local Road      |
| Water Tank            | Completed Road as Line  | Tunnel          |
| Helispot              | Access or Improved Road | Trail           |
| Division Break        | Contained               | Uncontained     |
| Incident Command Post |                         |                 |





2 North American Datum  
Miles/Lat/Long Grid



8/29/2023 0912  
Acres from IR and GPS