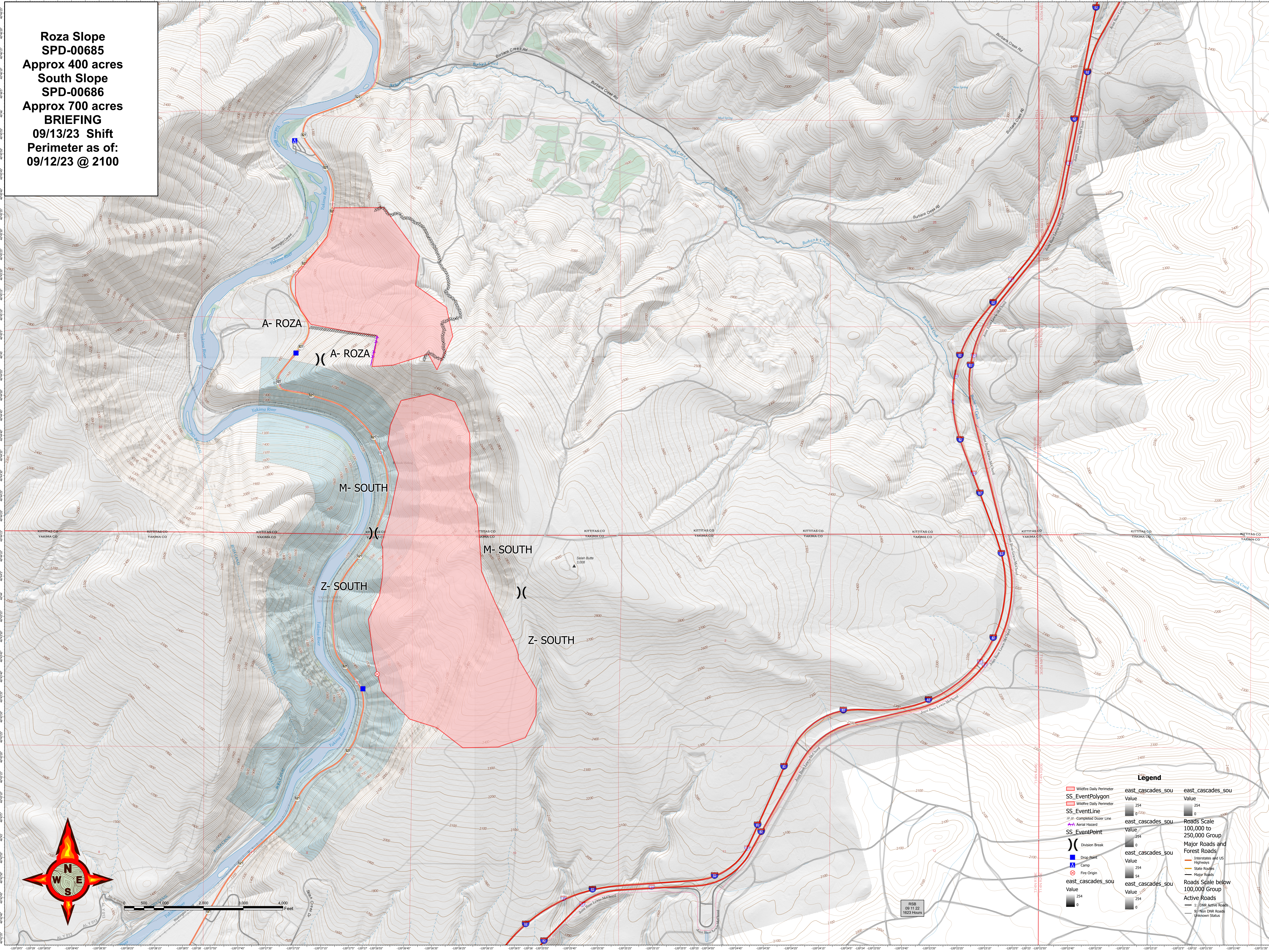


Roza Slope
SPD-00685
Approx 400 acres
South Slope
SPD-00686
Approx 700 acres
BRIEFING
09/13/23 Shift
Perimeter as of:
09/12/23 @ 2100



A-ROZA

A-ROZA

M-SOUTH

M-SOUTH

Z-SOUTH

Z-SOUTH



Legend

| | | |
|--------------------------|-----------------------------|--------------------------------------|
| Wildfire Daily Perimeter | east_cascades_sou Value 254 | east_cascades_sou Value 254 |
| SS_EventPolygon | east_cascades_sou Value 0 | Roads Scale 100,000 to 250,000 Group |
| Wildfire Daily Perimeter | east_cascades_sou Value 254 | Major Roads and Forest Roads |
| SS_EventLine | east_cascades_sou Value 0 | Interstates and US Highways |
| Completed Dotted Line | east_cascades_sou Value 254 | State Routes |
| Aerial Hazard | east_cascades_sou Value 254 | Major Roads |
| SS_EventPoint | east_cascades_sou Value 0 | Roads Scale below 100,000 Group |
| Drop Point | east_cascades_sou Value 254 | Active Roads |
| Camp | east_cascades_sou Value 0 | 1: DNR Active Roads |
| Fire Origin | east_cascades_sou Value 254 | 2: Non DNR Roads |
| Fire Origin | east_cascades_sou Value 0 | Unknown Status |

RSB
09/13/23
1623 Hours