

123°41'W

123°40.5'W

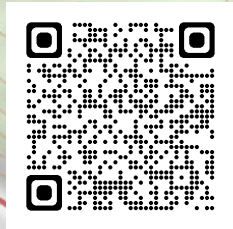
123°40'W

IAP Map

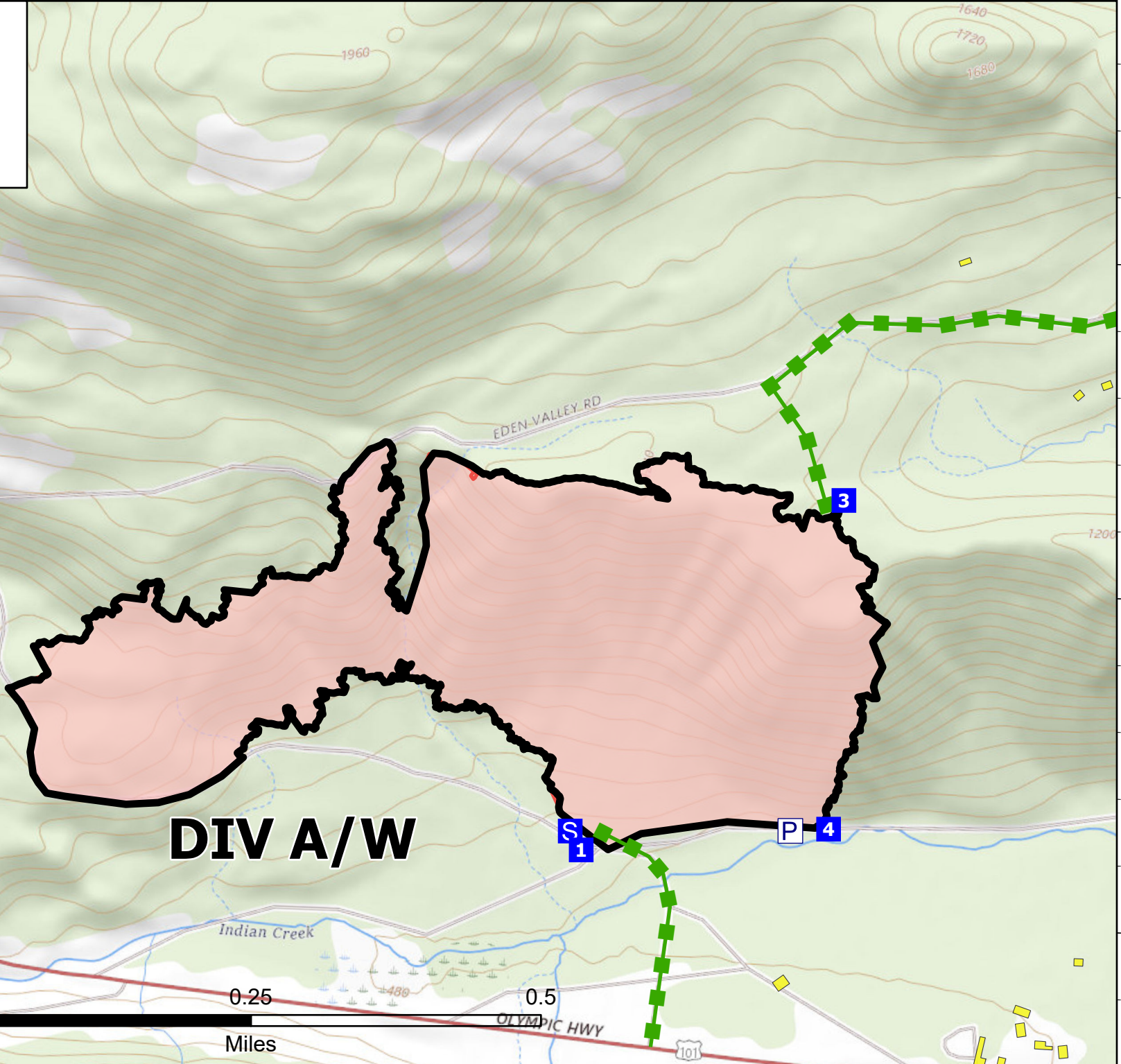
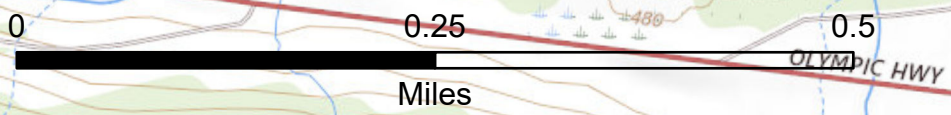
Sutherland_Fire
WA-OLS-000022
06/23/2023

95.75 acres at 20230622

- Drop Point
- S Staging Area
- P Pump
- Escape Route
- Contained
- Structures



Robert Thurston
6/22/2023 1709
Acres from IR and GPS
North American 1983 HARN Datum.



48°5'N

48°5'N

48°4.5'N

48°4.5'N

123°41'W

123°40.5'W

123°40'W