

# Tunnel Five WA-SES-000336

## Briefing Map



07/03/2023 Day Shift

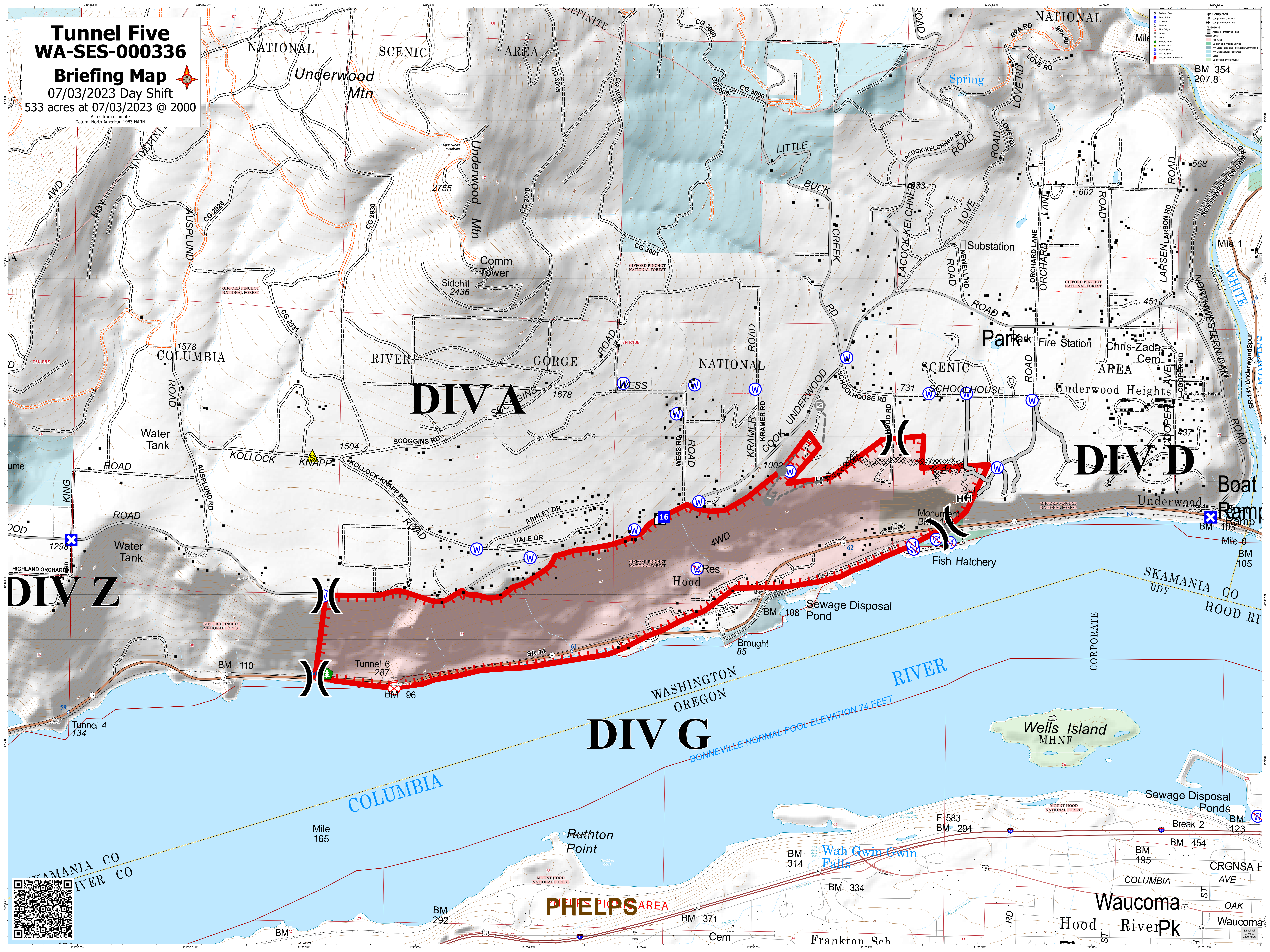
533 acres at 07/03/2023 @ 2000

Acreage from estimate

Datum: North American 1983 NAD83

- Open Pit
- Drop Point
- Closure
- Layout
- Fire Origin
- Other
- Gate
- Hazard Tree
- Safety Zone
- Water Source
- No Dig Site
- Uncontaminated Fire Edge
- Completed Open Line
- Reference
- Access or Improved Road
- Road
- Fire Area
- CG Road and Mobile Service
- CG State Area and Resource Commission
- CG Dept Natural Resources
- CG State
- CG Forest Service (DPS)
- Uncontaminated Fire Edge

BM 354  
207.8



**PHELPS AREA**

**Waucoma**

Frankton Sch

Waucoma