



**WA-SES-000336**  
**FED – PN QA7V (1522)**  
**FMAG – 221-LPL**

# **Incident Action Plan**

# **Tunnel Five**

**Operational Period**

**July 10, 2023**

**Dayshift - 0600 to 1800**



**FIRE LINKS**  
**IAP**  
**MAPS**


This page intentionally left blank.



## INCIDENT OBJECTIVES (ICS 202)

<b>1. Incident Name:</b>	<b>2. Operational Period: DAY</b>	
TUNNEL FIVE	Date/Time From: 07/10/2023 0600      MON	Date/Time To: 07/10/2023 1800      MON
<b>3. Objective(s):</b>		
<ul style="list-style-type: none"> <li>• Identify, evaluate and reduce risks to firefighters and the public through the use of Deliberate Risk Assessment process.</li> <li>• Minimize acres burned and impacts to communities and infrastructure by completing a strategic risk assessment to guide operations in the development of strategies and tactics to be implemented by fire personnel.</li> <li>• Protect historical, tribal, cultural, aquatic and wildlife resources, and sensitive plant sites.</li> <li>• Provide initial attack response and assistance for private and public lands within the delegated area.</li> <li>• Maintain and enhance relationships with cooperators, stake holders, landowners, and communities by providing accurate and timely information.</li> <li>• Manage cost commensurate with values at risk and maintain fiscal accountability.</li> <li>• Treat each other with dignity and respect and act in a professional manner while on the fire and in the community.</li> </ul>		
<b>4. Operational Period Command Emphasis:</b>		
Implement strategies and tactics to achieve incident objectives with the least amount of risk practical, with the highest probability of success.		
<b>General Situational Awareness:</b>		
Fighting fire in light flashy fuels under hot, dry, and windy conditions poses great potential for rapid fire growth. Anticipate changes in fire behavior before it happens and ensure Lookouts, Communications, Escape Routes, and Safety Zones are adequate. Maintain accountability of all assigned resources while engaged on the fire line.		
<b>5. Site Safety Plan Required?</b> Yes <input type="checkbox"/> No <input checked="" type="checkbox"/>		
<b>Approved Site Safety Plan(s) Located</b>		
<b>6. Incident Action Plan</b> (the items checked below are included in this Incident Action Plan):		
<input checked="" type="checkbox"/> ICS 202 <input checked="" type="checkbox"/> ICS 203 <input checked="" type="checkbox"/> ICS 204 <input checked="" type="checkbox"/> ICS 205 <input type="checkbox"/> ICS 205A <input checked="" type="checkbox"/> ICS 206	<input type="checkbox"/> ICS 207 <input checked="" type="checkbox"/> ICS 208 <input checked="" type="checkbox"/> ICS 220 <input checked="" type="checkbox"/> Map/Chart <input checked="" type="checkbox"/> Weather Forecast/Tides/Currents	Other Attachments: <input checked="" type="checkbox"/> HR MESSAGE _____ <input checked="" type="checkbox"/> FINANCE MESSAGE _____ <input type="checkbox"/> _____ <input type="checkbox"/> _____
<b>7. Prepared by:</b> HOWARD JOHNSON	<b>Position/Title:</b> PSC2	<b>Signature:</b> <i>Howard Johnson</i>
<b>8. Approved by Incident Commander:</b>	<b>Name:</b> BOB SHINDELAR	<b>Signature:</b> <i>Bob Shindelar</i>
<b>ICS 202</b>	<b>IAP Page</b>	<b>Date/Time:</b> 07/10/2023 2000

## ORGANIZATION ASSIGNMENT LIST (ICS 203)

<b>1. Incident Name:</b>		<b>2. Operational Period:</b> DAY	
TUNNEL FIVE		Date/Time From: 07/10/2023 0600 MON	Date/Time To: 07/10/2023 1800 MON
<b>3. Incident Commander(s) and Command Staff:</b>		<b>6. Logistics Section:</b>	
IC/UC	BOB SHINDELAR	CHIEF	KEVIN HAUGHTON WHIT SPENCER (T)
SAFETY OFFICER	TROY CORN JACK CATES (VIRTUAL)	SUPPLY UNIT	JOHN KAUPA
INFORMATION OFFICER	JOEL BRUMM LIV STECKER	FACILITIES UNIT	LAWRENCE FALCON
LIAISON OFFICER	SCOTT CRAWFORD; JEFF SEVIGNEY COLLIN HAFHEY (T)	GROUND SUPPORT UNIT	DAVE HARSH TOM FORTIN
HUMAN RESOURCE SPECIALIST	SUSIE MANEZES	COMMUNICATIONS UNIT	MISSY PARKER
		MEDICAL UNIT	EAMONN RYAN; LEE VENNING JOSH ALEXANDER (T)
		FOOD UNIT	JACOB BEARD
		SECURITY UNIT	PETER DEANE
<b>4. Agency/Organization Representative(s):</b>		<b>7. Operations Section:</b>	
<b>Agency/Organization</b>	<b>Name</b>	OPS SECTION CHIEF	TONY ENGEL CODY ACORD (T)
DEPT OF NATURAL RESOURCES	LARRY LEACH (AA) TOM SCHOENFELDER (DEPUTY AA)	PLANNING OPS	KURT RANTA
US FISH & WILDLIFE SVC	LARRY ZEIGENFUSS (AA) RUSS MACAL (AREP)	STRATEGIC OPS	MATT CASTLE (VIRTUAL)
WSP	ESTHER HERNANDEZ		
SKAMANIA FD 3	AARON KREPS	DIVISION/GROUP	A RICK WOODALL KEN JOHNSON (T)
SKAMANIA COUNTY SHERIFF	SUMMER SCHEYER	DIVISION/GROUP	D JEFF PRICHER
KLICKITAT COUNTY EM	JEFF KING	DIVISION/GROUP	G KEN FOSS
		DIVISION/GROUP	Z SAM STEINSHOUER PAUL KIMBALL (T)
<b>5. Planning Section:</b>		<b>7b. Air Operations Branch:</b>	
CHIEF	HOWARD JOHNSON	AIR SUPPORT SUPERVISOR	TIM LYDA
RESOURCES UNIT	JILL JOHNSON CHRIS VOLK	<b>8. Finance/Administration Section:</b>	
SITUATION UNIT	DAVE WISCHER STEPHEN SEWELL (T)	CHIEF	CHERI FULLER STEVE CROW (T)
DOCUMENTATION UNIT	SUSIE MANEZES (T)	TIME UNIT	CAROL LONG
DEMOBILIZATION UNIT	MIKE HESTON (VIRTUAL)	PROCUREMENT UNIT	TODD POWELL
FIRE BEHAVIOR ANALYST	DON STRAND	COST UNIT	KAY HIGH (VIRTUAL) CHRISTINA GOEBEL (T)
GIS SPECIALIST	SHAWN BUSHNELL ; MIKE TONKEL	COMPENSATION UNIT	CHERI FULLER
TECHNOLOGY SUPPORT SPECIALIST	GEORGE JENKINS; ERIK OWREN CASSANDRA HEIDE (T)		
INCIDENT METEOROLOGIST	MARY WISTER		
<b>9. Prepared By:</b>	<b>Name:</b> JILL JOHNSON	<b>Position/Title:</b> RESL	<b>Signature:</b> 
ICS 203	IAP Page	<b>Date/Time:</b> 07/09/2023 2000	





## Tunnel Five Weather Forecast



**FORECAST NO:** 6  
**PREDICTION FOR:** Day shift  
**SHIFT DATE:** July 10, 2023  
**FORECAST ISSUED:** 1900 PDT 7/9/23

**NAME OF FIRE:** Tunnel Five  
**UNIT:** WA-DNR  
**SIGNED:** Mary C. Wister  
**Incident Meteorologist-** Mary C. Wister  
**cell 240-778-5303**

### ...Windy Monday...

**WEATHER DISCUSSION:** A cold front has swept across the region, and the strongest winds of the week will occur today. It will be cooler with higher humidity. Winds will decrease tonight and expect a chilly start to Tuesday morning. Tuesday will be a little warmer with higher humidity, but it will be breezy. -----

### **WEATHER FORECAST: Monday**

**WEATHER:** Partly cloudy with morning stratus. Mostly sunny in the afternoon. Windy. Cooler.

**TEMPERATURES:** 72-77.

**HUMIDITY:** 42-47%

**20 FT WINDS:** West 18-25 mph with gusts to 35 mph.

**HAINES INDEX:** 4 (low)                      **STABILITY/INVERSION:** Frontal inversion.

### **WEATHER FORECAST: Monday night**

**WEATHER:** Mostly clear and cool.

**TEMPERATURES:** 53-58.

**HUMIDITY:** 75-80%

**20 FT WINDS:** West winds decreasing to 9--13 mph gusting to 20 mph.

**HAINES INDEX:** 3 (very low)                      **STABILITY/INVERSION:** Strong inversion.

### **WEATHER FORECAST: Tuesday**

**WEATHER:** Mostly sunny. A few early morning stratus.

**TEMPERATURES:** 77-82.

**HUMIDITY:** 33-38%.

**20 FT WINDS:** West 10-15 mph gusting to 25 mph.

**HAINES INDEX:** 3 (very low)                      **STABILITY/INVERSION:** Stable with strong mid-level inversion. --

### **EXTENDED FORECAST: Wednesday and Thursday**

Wednesday: Partly cloudy. Lows 55-60. Highs 78-83. Min RH 33-38%. West winds 15-20 mph gusts 28 mph.

Thursday: Mostly clear. Lows 57-62. Highs 80-85. Min RH 30-35%. West winds 12-17 mph gusts 25 mph.

## FIRE BEHAVIOR FORECAST

FORECAST NUMBER: 7	TYPE OF FIRE: WILDFIRE
FIRE NAME: Tunnel Five	OPERATIONAL PERIOD: July 10, 2023
DATE ISSUED: July 9, 2023	TIME ISSUED: 2000 HOURS
UNIT: SE Region	SIGNED: DON STRAND, FBAN

### INPUTS

**WEATHER SUMMARY:**

Partly cloudy. Max temps 72-77. Minimum humidities 42-47%. Winds, west 18-25 with gusts to 35 MPH.

**FUELS:** Fuels in the area are short grass, timber needle litter with areas down woody debris, timber litter with light brush and Oak with leaf litter. Surface litter is definitely dry enough for continuous fire spread. Live foliage moisture has some greenness but the conifer foliage is dry enough to support isolated torching where ladder fuels are present. On steep slopes short crown runs possible. The cheat grass is cured and will easily carry fire.

### OUTPUTS

**FIRE BEHAVIOR**

**GENERAL:** Cold front passage with west winds gusting to 35 MPH. Fire behavior within the fire perimeter area has decreased due to suppression efforts resulting in less available fuels.

Most of the fire behavior will be smoldering in isolated areas. Continue to monitor for spots although very unlikely. Spotting distance could exceed 0.25 miles with stronger wind gusts but probably of ignition decreasing and will range from 30% (shaded) to 50% (unshaded).

In the event a spot fire gets established, expect low to moderate rates of spread and in areas with cured cheat grass, high rates of spread.

**SPECIFIC:**

All Divisions: Mop up and patrol. Still slight potential for spotting although cooler and higher humidity today will increase probability of ignition.

Stronger winds today could contribute to fire weakened trees and snags to fall. Roll outs are still possible.

Initial Attack: In the event resources respond to a new start. Keep in mind stronger westerly winds. In light fuels, expect rapid rates of spread in grass and brush. In conifer timber/oak litter, potential for surface fire transitioning to single and group torching. Spotting likely from any new start.

**AIR OPERATIONS:** Expect areas of turbulence in the fire area with the stronger winds

### SAFETY

- Roll outs on steep slopes may also contribute to other rolling debris.
- In the event a new start or spot fire gets established in grass/brush, expect rapid rates of spread.
- Stronger wind gusts today so fire weakened trees and snags falling could increase. There's a chance of flare ups if falling snags and green trees land on interior heat.
- Winds may also increase blowing dust and ash.



## SAFETY MESSAGE

10 July 2023

**INCIDENT: TUNNEL FIVE**

**OPERATIONAL PERIOD: 0600-1800**

### TOPICS:

#### FINISH STRONG/LONG HAUL

As demob continues, take some extra time traveling home and spend time with loved ones before the next roll. It's shaping up to be an active long season. Longevity, preparation, and resiliency are key to making it through a long season. Nutrition, hydration, fitness, and family support are all elements to success.



Expect an increase in area traffic due to recreational activities this weekend. Stay alert and focused on the Wind River Road for Elk. You don't want an encounter with an elk and any speed. Ground level fog in the mornings will continue to pop up. Reduce speed and increase your following distance to expand your reaction time.

**SAFETY OFFICERS: Troy Corn, Jack Cates, Mitch Wilson**

# Deliberate Risk Assessment-Hazard Summary

10 July 2023

Hazard	Mitigation	Post Risk
Extraction Time	Identify medivac sites and helispots. Initiate ground transport to accident site for transport capability. Utilize civilian medivac and short haul as needed and available. Ensure VMED frequency is identified in radios. Identify EMT/EMTP from resources assigned to division. Provide line qualified paramedics to each division as available. Review IWI protocol to ensure familiarity. Utilize agency and civilian medivac as treatment/timing dictates. Evaluate on-going need for repositioning medical personnel. Provide Dust abatement on Helispots as needed.	HIGH
Aircraft	Utilize Air Attack. Ensure all resources are a safe distance from all bucket and retardant drops. Establish LCES. Utilize air to ground fixed wing and bucket work. Reference IRPG (Safe aircraft operations pg. 61-62). Ensure IA resources have coordination with unassigned local air resources to provide deconfliction.	HIGH
Hazard Trees	Use avoidance to limit exposure time. Fall ahead to avoid exposure. Use qualified fallers or alternate methods if needed. Conduct on- going risk analysis of all work areas. Follow Hazard Tree Safety Guidelines (IRPG page 20-21).	HIGH
Heavy Equipment	Post lookouts around equipment work areas. Establish communications with equipment boss and operator. Do not work down slope from equipment. Follow agency guidelines for chipping operations. Feeding is only to be done by equipment operator/personnel.	HIGH
Railroad Right-of-Way	Implement work windows/slow orders with BNSF when personnel are working near the right-or-way. Post lookouts at each end of work zones.	HIGH
Physical Factors	Maintain hydration schedule. Closely monitor work rate and implement rest periods. Maintain nutrition. Ensure adequate work/rest.	MODERATE
Fire Behavior	Be aware of burn windows and weather impacts and min/max RH for flashy fuels/local conditions. Report changes to FBAN and IMET. Establish MAP for disengagement to provide for an orderly retreat given lack of safety zones. Have a plan for disengagement that establishes a designated meeting point and maintains personnel accountability.	MODERATE
Steep Terrain/Gravity	Establish LCES. Do not work crews above or below each other. Post lookouts for rolling material. Watch footing in loose soil, rock and around vegetation. Do not work below heavy equipment. Scout and identify travel routes.	MODERATE
Transportation	Sign all incident roads that provide access to divisions. Provide daily updated travel plan maps. Practice defensive driving. In local communities obey the posted speed limits. Use reader boards to provide advanced warning and control entry to base camp as needed. Identify and evaluate contingency and alternate escape and travel routes. Provide dust abatement and grading as needed. Provide advanced scouting for transport access and bridge weight restrictions.	MODERATE
Unburned Fuels/Firing Ops	Establish LCES. Ensure management action points are implemented and followed. Weather updates as needed during burning operations. Locate indirect firelines to minimize unburned fuels. Follow Interagency Ignition Guide. Ensure communications between all firing operations. Establish road security at all firing sites. Follow approved firing plan for unburned fuels.	MODERATE
Environmental Factors	Assign medical personnel to camp. Assess for known allergies and report to medical personnel. Obtain Bee Bopper/wasp spray and yellow jacket traps. Maintain an awareness of wildlife and poison oak/ivy. Obtain treatment for poison oak/ivy in Medical. Exchange contaminated clothing at supply. Identify and report allergies to your chain of command.	MODERATE
Public Interaction	Implement area and road closures as necessary. Maintain awareness of evacuation areas and provide accurate information dissemination.	LOW
Initial Attack	Ensure identified IA resources are briefed of expectations and ensure communication plan is provided. Ensure resources are briefed on IA command structure. Provide identified crews with area maps.	LOW



**Division/Group Assignment List (ICS 204 WF)**  
**Controlled Unclassified Information//Basic**

<b>1. Incident Name:</b>			<b>3.</b>			
TUNNEL FIVE			<b>Branch:</b>		<b>Division/Group</b>	
<b>2. Operational Period:</b> DAY			A			
Date/Time From: 07/10/2023 0600 MON		Date/Time To: 07/10/2023 1800 MON				
<b>4. Operations Personnel</b>						
<b>OPERATIONS CHIEF</b>		TONY ENGEL; CODY ACORD (T) KURT RANTA		<b>DIVISION/GROUP SUPERVISOR</b>		RICK WOODALL KEN JOHNSON (T)
<b>SAFETY OFFICER</b>		TROY CORN JACK CATES (VIRTUAL)		<b>AIR SUPPORT SUPERVISOR</b>		TIM LYDA
<b>5. Resources Assigned this Period</b>						
Strike Team / Task Force / Resource Designator		LWD	Leader	Number Persons	Drop Off PT./Time	Pick Up PT./Time
O-5.31 SOF2		07/17	MITCH WILSON	1	BASE CAMP/0600	BASE CAMP/1800
O-121 TFLD		07/20	JYOTA SMITH-HOWARD	1	BASE CAMP/0600	BASE CAMP/1800
O-120 TFLD (T)		07/20	NATALIE KUNTZ	1	BASE CAMP/0600	BASE CAMP/1800
E-83 ENG5 GLACIER PEAK WF GP-04 **		07/19	ERIK BORGEN	3	BASE CAMP/0600	BASE CAMP/1800
E-86 ENG6 C2C WILDFIRE E706 **		07/19	CHRIS WHITE	3	BASE CAMP/0600	BASE CAMP/1800
E-87 ENG6 C2C WILDFIRE E709 **		07/19	CESAR DOMINGUEZ	3	BASE CAMP/0600	BASE CAMP/1800
E-88 ENG5 WA-NWS-5203 **		07/20	ISAAC WILLIAM DUGGER	5	BASE CAMP/0600	BASE CAMP/1800
E-110 CHP2 PATRICK ENVIRONMENTAL		07/21	QUENTIN JOHNSON	3	BASE CAMP/0600	BASE CAMP/1800
E-18 AMB2 SKAMANIA CO EMS - MEDIC 72		07/17	COLIN HOZACK	2	BASE CAMP/0600	BASE CAMP/1800
<b>6. Control Operations/Work Assignments:</b>						
<p><u>Task:</u> Mop-up, secure and patrol line and roads to keep fire in current footprint South of Ashley Dr, due East to Wess Rd and East of Wess Rd, keep fire South of Cook-Underwood Rd to the Div A/D division break. Continue chipping operations. Backhaul equipment..</p> <p><u>Purpose:</u> To protect the community of Underwood and infrastructure to the north and west</p> <p><u>End State:</u> Fire is secured along current containment lines. Primary residences are re-populated.</p>						
<b>7. Special Instructions:</b>						
<p>Initial Attack Process:</p> <ul style="list-style-type: none"> <li>· If Initial Attack occurs within the TFR, local dispatch will coordinate with appropriate duty officer and contact Field Ops for response.</li> <li>· Field Operations will contact IA resources and/or Air Operations to coordinate response to new start.</li> <li>· Local forest Initial Attack frequencies will be used and provided in the IAP Communications Plan.</li> </ul> <p>Initial Attack resources are designated with ** after resource name.</p> <p>Backhaul all excess supplies and trash. Coordinate through Communications for backhaul.</p>						
<b>8. Division/Group Communication Summary</b>						
Function	Channel	RX Frequency N/W	RX Tone/NAC	TX Frequency N/W	TX Tone/NAC	Mode
TACTICAL	1	168.0500 N	110.9	168.0500 N	110.9	A
AIR TO GROUND	8	166.6125 N		166.6125 N		A
COMMAND	7	170.9750 N	110.9	168.7000 N	110.9	A
<b>9. Prepared By (Resource Unit Leader)</b>			<b>Approved By (Planning Section Chief)</b>		<b>Date</b>	<b>Time</b>
JILL JOHNSON			HOWARD JOHNSON		07/09/2023	2000

**Division/Group Assignment List (ICS 204 WF)**  
**Controlled Unclassified Information//Basic**

<b>1. Incident Name:</b>			<b>3.</b>			
TUNNEL FIVE			<b>Branch:</b>		<b>Division/Group</b>	
<b>2. Operational Period:</b> DAY			D			
Date/Time From: 07/10/2023 0600 MON		Date/Time To: 07/10/2023 1800 MON				
<b>4. Operations Personnel</b>						
<b>OPERATIONS CHIEF</b>		TONY ENGEL; CODY ACORD (T) KURT RANTA		<b>DIVISION/GROUP SUPERVISOR</b>		JEFF PRICHER
<b>SAFETY OFFICER</b>		TROY CORN JACK CATES (VIRTUAL)		<b>AIR SUPPORT SUPERVISOR</b>		TIM LYDA
<b>5. Resources Assigned this Period</b>						
Strike Team / Task Force / Resource Designator		LWD	Leader	Number Persons	Drop Off PT./Time	Pick Up PT./Time
O-61 SOFR		07/18	LARRY WELSH	1	BASE CAMP/0600	BASE CAMP/1800
O-39 HEQB		07/17	MIKE BOBIC	1	BASE CAMP/0600	BASE CAMP/1800
C-1 CR2I SES AHTANUM **		07/15	JEFF DELAROSA	18	BASE CAMP/0600	BASE CAMP/1800
C-10 CR2I PCS NEWAUKUM		07/16	MICHAEL ROBINSON	20	BASE CAMP/0600	BASE CAMP/1800
E-96 DZR3 KREPS		07/15	CHRIS KREPS	2	BASE CAMP/0600	BASE CAMP/1800
<b>6. Control Operations/Work Assignments:</b>						
<p><u>Task:</u> Keep fire South of Hood Rd and fire South of the East/West Schoolhouse Rd by securing, mopping, and patrolling established dozer line and fire perimeter. Monitor and secure fire edge from the ridge down to Hwy 14 where possible. Backhaul equipment.</p> <p><u>Purpose:</u> To protect structures and infrastructure to the east of the fire and along Cook-Underwood Rd.</p> <p><u>End State:</u> Fire progression is halted and line is established direct down to Highway 14. Primary residences are re-populated.</p>						
<b>7. Special Instructions:</b>						
<p>Initial Attack Process:</p> <ul style="list-style-type: none"> <li>· If Initial Attack occurs within the TFR, local dispatch will coordinate with appropriate duty officer and contact Field Ops for response.</li> <li>· Field Operations will contact IA resources and/or Air Operations to coordinate response to new start.</li> <li>· Local forest Initial Attack frequencies will be used and provided in the IAP Communications Plan.</li> </ul> <p>Initial Attack resources are designated with ** after resource name.</p> <p>Backhaul all excess supplies and trash. Coordinate through Communications for backhaul.</p>						
<b>8. Division/Group Communication Summary</b>						
Function	Channel	RX Frequency N/W	RX Tone/NAC	TX Frequency N/W	TX Tone/NAC	Mode
TACTICAL	2	168.6000 N	110.9	168.6000 N	110.9	A
COMMAND	7	170.9750 N	110.9	168.7000 N	110.9	A
AIR TO GROUND	8	166.6125 N		166.6125 N		A
<b>9. Prepared By (Resource Unit Leader)</b>			<b>Approved By (Planning Section Chief)</b>		<b>Date</b>	<b>Time</b>
JILL JOHNSON			HOWARD JOHNSON		07/09/2023	2000

**Division/Group Assignment List (ICS 204 WF)**  
**Controlled Unclassified Information//Basic**

<b>1. Incident Name:</b>			<b>3.</b>			
TUNNEL FIVE			<b>Branch:</b>		<b>Division/Group</b>	
<b>2. Operational Period:</b> DAY			G			
Date/Time From: 07/10/2023 0600 MON		Date/Time To: 07/10/2023 1800 MON				
<b>4. Operations Personnel</b>						
<b>OPERATIONS CHIEF</b>		TONY ENGEL; CODY ACORD (T) KURT RANTA		<b>DIVISION/GROUP SUPERVISOR</b>		KEN FOSS
<b>SAFETY OFFICER</b>		TROY CORN JACK CATES (VIRTUAL)		<b>AIR SUPPORT SUPERVISOR</b>		TIM LYDA
<b>5. Resources Assigned this Period</b>						
Strike Team / Task Force / Resource Designator		LWD	Leader	Number Persons	Drop Off PT./Time	Pick Up PT./Time
O-61 SOFR		07/18	LARRY WELSH	1	BASE CAMP/0600	BASE CAMP/1800
E-78 ENG5 JR WILDFIRE LLC		07/20	KYLE COLTON	3	BASE CAMP/0600	BASE CAMP/1800
O-54 EMPF MEDIC 1		07/18	ANDREY ZALOZH	1	BASE CAMP/0600	BASE CAMP/1800
E-19 AMB2 - MED TRANSPORT AMB		07/19	TAYLOR MORRISSEY	2	BASE CAMP/0600	BASE CAMP/1800
<b>6. Control Operations/Work Assignments:</b>						
<p><u>Task:</u> Patrol and mop-up around old mill site and Spring Creek fish hatchery. Monitor and mitigate rollout towards structures. Continue chipping operations. Backhaul equipment.</p> <p><u>Purpose:</u> Prevent further impact to structures and infrastructure along Highway 14 corridor.</p> <p><u>End State:</u> Fire edge is secured where accessible. Primary residences are re-populated.</p>						
<b>7. Special Instructions:</b>						
<p>Initial Attack Process:</p> <ul style="list-style-type: none"> <li>· If Initial Attack occurs within the TFR, local dispatch will coordinate with appropriate duty officer and contact Field Ops for response.</li> <li>· Field Operations will contact IA resources and/or Air Operations to coordinate response to new start.</li> <li>· Local forest Initial Attack frequencies will be used and provided in the IAP Communications Plan.</li> </ul> <p>Backhaul all excess supplies and trash. Coordinate through Communications for backhaul.</p>						
<b>8. Division/Group Communication Summary</b>						
Function	Channel	RX Frequency N/W	RX Tone/NAC	TX Frequency N/W	TX Tone/NAC	Mode
TACTICAL	3	166.7250 N	110.9	166.7250 N	110.9	A
COMMAND	7	170.9750 N	110.9	168.7000 N	110.9	A
AIR TO GROUND	8	166.6125 N		166.6125 N		A
<b>9. Prepared By (Resource Unit Leader)</b>			<b>Approved By (Planning Section Chief)</b>		<b>Date</b>	<b>Time</b>
JILL JOHNSON			HOWARD JOHNSON		07/09/2023	2000

**Division/Group Assignment List (ICS 204 WF)**  
**Controlled Unclassified Information//Basic**

<b>1. Incident Name:</b>			<b>3.</b>			
TUNNEL FIVE			<b>Branch:</b>		<b>Division/Group</b>	
<b>2. Operational Period: DAY</b>			Z			
Date/Time From: 07/10/2023 0600 MON		Date/Time To: 07/10/2023 1800 MON				
<b>4. Operations Personnel</b>						
<b>OPERATIONS CHIEF</b>		TONY ENGEL; CODY ACORD (T) KURT RANTA		<b>DIVISION/GROUP SUPERVISOR</b>		SAM STEINSHOUER PAUL KIMBALL (T)
<b>SAFETY OFFICER</b>		TROY CORN JACK CATES (VIRTUAL)		<b>AIR SUPPORT SUPERVISOR</b>		TIM LYDA
<b>5. Resources Assigned this Period</b>						
Strike Team / Task Force / Resource Designator		LWD	Leader	Number Persons	Drop Off PT./Time	Pick Up PT./Time
O-5.31 SOF2		07/16	MITCH WILSON	1	BASE CAMP/0600	BASE CAMP/1800
C-13.1 TFLD (T)		07/11	HOLT JAEGER	1	BASE CAMP/0600	BASE CAMP/1800
C-13 CR2I METHOW 43		07/11	DANE HAGGENES	19	BASE CAMP/0600	BASE CAMP/1800
O-33 REMS THURSTON COUNTY		07/17	JEREMIAH MUSHEN	4	BASE CAMP/0600	BASE CAMP/1800
<b>6. Control Operations/Work Assignments:</b>						
<p><u>Task:</u> Secure and mop line from top and bottom of division using natural barriers and established line. Continue indirect operations from Cook-Underwood Rd to Hwy 14 and along the Cook-Underwood Rd to the west. Complete suppression repair on non-primary dozer lines. Backhaul equipment.</p> <p><u>Purpose:</u> Stop fire spread to west and prevent further impact to infrastructure along Highway 14.</p> <p><u>End State:</u> Fire spread halted to west. Primary residences are re-populated.</p>						
<b>7. Special Instructions:</b>						
<p>Initial Attack Process:</p> <ul style="list-style-type: none"> <li>· If Initial Attack occurs within the TFR, local dispatch will coordinate with appropriate duty officer and contact Field Ops for response.</li> <li>· Field Operations will contact IA resources and/or Air Operations to coordinate response to new start.</li> <li>· Local forest Initial Attack frequencies will be used and provided in the IAP Communications Plan.</li> </ul> <p>Backhaul all excess supplies and trash. Coordinate through Communications for backhaul.</p>						
<b>8. Division/Group Communication Summary</b>						
Function	Channel	RX Frequency N/W	RX Tone/NAC	TX Frequency N/W	TX Tone/NAC	Mode
TACTICAL	4	166.7750 N	110.9	166.7750 N	110.9	A
COMMAND	7	170.9750 N	110.9	168.7000 N	110.9	A
AIR TO GROUND	8	166.6125 N		166.6125 N		A
<b>9. Prepared By (Resource Unit Leader)</b>			<b>Approved By (Planning Section Chief)</b>		<b>Date</b>	<b>Time</b>
JILL JOHNSON			HOWARD JOHNSON		07/09/2023	2000

# INCIDENT RADIO COMMUNICATIONS PLAN (ICS 205)

Controlled Unclassified Information//Basic

<b>1. Incident Name:</b>	<b>2. Date/Time Prepared:</b>	<b>3. Operational Period: DAY</b>	
TUNNEL FIVE	Date: 07/09/2023 Time: 2000	Date/Time From: 07/10/2023 0600 MON	Date/Time To: 07/10/2023 1800 MON

**4. Basic Radio Channel Use:**

Zone Group	Ch #	Function	Channel Name/Trunked Radio System Talkgroup	Assignment	RX Freq	RX Tone/NAC	TX Freq	TX Tone/NAC	Mode (A,D, or M)	Remarks
	1	TACTICAL	TAC 1	DIV A	168.0500 N	110.9	168.0500 N	110.9	A	
	2	TACTICAL	TAC 2	DIV D	168.6000 N	110.9	168.6000 N	110.9	A	
	3	TACTICAL	TAC 3	DIV G	166.7250 N	110.9	166.7250 N	110.9	A	
	4	TACTICAL	TAC 4	DIV Z	166.7750 N	110.9	166.7750 N	110.9	A	
	7	COMMAND	CMD 7	ALL DIVS	170.9750 N	110.9	168.7000 N	110.9	A	
	8	AIR TO GROUND	A/G PRI	AIR TO GROUND PRIMARY	166.6125 N		166.6125 N		A	
	9	AIR TO GROUND	A/G SEC	AIR TO GROUND SECONDARY	167.9500 N		167.9500 N		A	
	12	COMMAND	SE DEFIA	IA ONLY	159.3750 N	127.3	151.3700 N	127.3	A	
	13	TACTICAL	DNR TAC1	IA ONLY	151.3100 N	103.5	151.3100 N	103.5	A	
	14	AIR TO GROUND	DNR A/G1	IA ONLY	159.2700 N	103.5	159.2700 N	103.5	A	
	15	AIR TO GROUND	VMED 29	EMERG MEDIVAC	155.3475 N		155.3475 N	156.7	A	
	16	AIR GUARD	AIRGUARD	EMERG AIR OPS ONLY	168.6250 N		168.6250 N	110.9	A	

**5. Special Instructions:**

<b>6. Prepared By</b> (Communications Unit Leader)	Name: MISSY PARKER	Signature: <i>Missy Parker</i>
ICS 205	IAP Page	Date/Time: 07/09/2023 2000



# INCIDENT RADIO COMMUNICATIONS PLAN (ICS 205)

Controlled Unclassified Information//Basic

<b>1. Incident Name:</b>	<b>2. Date/Time Prepared:</b>	<b>3. Operational Period: DAY / NIGHT</b>	
TUNNEL FIVE <b>IA</b>	Date: 07/09/2023 Time: 2000	Date/Time From: 07/10/2023 0600      MON	Date/Time To: 07/10/2023 1800      MON

**4. Basic Radio Channel Use:**

Zone Group	Ch #	Function	Channel Name/Trunked Radio System Talkgroup	Assignment	RX Freq	RX Tone/NAC	TX Freq	TX Tone/NAC	Mode (A,D, or M)	Remarks
	1	TACTICAL	DNR COM		151.4150	103.5	151.4150	103.5	A	DNR STATEWIDE
	2	COMMAND	SE DEFIA		159.3750	127.3	151.3700	127.3	A	MT DEFIANCE-HOOD RV, OR
	3	COMMAND	GRAYBACK		159.3000	103.5	151.2575	103.5	A	GRAYBACK MTN-GLENWOOD
	4	TACTICAL	DNR TAC 1		151.3100	103.5	151.3100	103.5	A	DNR STATEWIDE
	5	TACTICAL	DNR TAC 2		151.3400	103.5	151.3400	103.5	A	DNR STATEWIDE
	6	COMMAND	CO FIRE		154.1300	162.2	158.8800	167.9	A	KLICKITAT CO FIRE
	7	COMMAND	WEST OPS		154.8900	97.4	158.8500	167.9	A	KLICKITAT CO FIRE
	8	TACTICAL	KL TAC 1		154.0700	82.5	154.0700	82.5	A	KLICKITAT CO FIRE
	9	TACTICAL	KL TAC 2		154.3550	82.5	154.3550	82.5	A	KLICKITAT CO FIRE
	10	COMMAND	NSA DEFI		169.9500	127.3	162.6125	162.2	A	NSA
	11	TACTICAL	G WORK 1		169.1250	127.3	169.1250	127.3	A	NSA
	12	TACTICAL	GP WORK 1		170.5000	123.0	170.5000	123.0	A	MT ADAMS RD
	13	COMMAND	SIGNALP		170.3625	127.3	163.0375	127.3	A	YAKAMA NATION SIGNAL PK
	14	TACTICAL	YN TAC 1		166.9750		166.9750		A	YAKAMA NATION TAC
	15	TACTICAL	CO PAGE		152.0075	100.0			A	KLICK CO FIRE-RX ONLY
	16	AIR TO GROUND	DNR A/G 1		159.2700	103.5	159.2700	103.5	A	DNR AIR TO GROUND

<b>6. Prepared By</b>	(Communications Unit Leader)	Name: MISSY PARKER	Signature: <i>Missy Parker</i>
ICS 205			Date/Time: 07/09/2023 2000

# Tunnel Five Fire

## Demob List

Monday, July 10

PICK UP  
DEMOB FORM  
AT OPS  
BRIEFING OR  
AT SUPPLY

### CREWS

C-1	1800	(CR2I)	SES AHTANUM
C-13	1800	(CR2I)	METHOW 43

### EQUIPMENT

E-60	0600	(ENG6)	WEST COAST WILDLAND
E-61	0600	(ENG6)	WEST COAST WILDLAND STRIKE
E-2	0615	(WTS2)	BREEZE BY FIRE EQUIPMENT
E-76	0615	(DZR4)	ARTISTIC EXCAVATION
E-58	0630	(DZR2)	MCNEALY EXCAVATING
E-97	0630	(WTS2)	K WATER
E-65	0645	(WTT2)	DEAN INNOVATIONS
E-69	0645	(ENG5)	JR WILDFIRE #215
E-71	0700	(ENG5)	ALDER CREEK FIRE
E-72	0700	(ENG5)	ALDER CREEK FIRE - B42710
E-26	0900	(STML)	NE DNR SERVICE TRUCK
E-15	1600	(WTS2)	MOUNTAIN VIEW WILDFIRE
E-93	1800	(ENG6)	STEELHEAD ENTERPRISES
E-18	1900	(AMB2)	SKAMANIA COUNTY EMS

### OVERHEAD

O-68	0615	(TFLD)	ASHBY, CHRIS
O-44	0615	(TFLD)	VICENTE, WALTER
O-29	0630	(FMOD)	FMOD - STUMPEM CUTTING
O-38	0645	(HEQB)	WEINKE, ERIC RYAN
O-81	0815	(FELB)	OOSAHWE, PHILLIP
O-73	1100	(GISS)	RALL, MICHAEL
O-66	1200	(IMET)	WISTER, MARY
O-93	1200	(HEBM)	JORG, LANCE
O-61	1800	(SOFR)	WELSH, LARRY A
O-99	1800	(RADO)	HURST, CHRIS
O-33	1800	(RES)	THURSTON COUNTY REMS
O-6	1800	(PIOC)	JOHNSON, EMERY ELIZABETH
O-49	1800	(FOBS)	RUSSELL, KATHLEEN
O-7	2000	(PIOC)	HENDRICKSON, ERIC
O-59	2000	(ITSS)	OWREN, ERIK ARNE



# Tunnel Five Fire

## Demob List

Tuesday, July 11

**CREWS**

C-11	1200	(CRWC)	ENA CAMP CREW 1
C-12	1200	(CRWC)	WARM SPRINGS CAMP CREW #1

**EQUIPMENT**

E-46	0900	(GIS2)	IMT12 THURSTON HSR 3 GISS
------	------	--------	---------------------------

**OVERHEAD**

O-56	0800	(SEC2)	HANNA, RYAN JOSEPH
O-58	0800	(SEC2)	WILLIAMS, JODY
O-76	0900	(EQTR)	BENCH, CHRISTOPHER A
O-48	1000	(COMT)	WOMER, SHERWIN CHARLES
O-85	1200	(CAMP)	COOPER, BARRY
O-88	1200	(PIOC)	JOHNSON, J MICHAEL
O-87	1200	(CAMP)	SALAZAR, CAMERON TYLER
O-35	1230	(RADO)	RUSSELL-STICKLEY, JAMES WYATT
O-124	1300	(SITL)	SEWELL, STEPHEN DONALD
O-8.5	1500	(LSC3)	FALCON, LAWRENCE BENNETT
O-94	1500	(FACL)	LANGUM, BRANDY

**PICK UP  
DEMOB FORM  
AT BRIEFING  
OR AT SUPPLY.  
CLOSE OUT  
WITH FINANCE  
ON MONDAY  
NIGHT.**



# Tunnel Five Fire

## Demob Instructions

**Pick up Demob form at BRIEFING or SUPPLY TO BEGIN PROCESS.**

Resource Order # \_\_\_\_\_

Date: \_\_\_\_\_

**Follow these steps in the order below:**

**The following stations are located at 1262 Hemlock Road.**

### **Signature**

- \_\_\_\_\_ 1. **Ground support** – Contractors must stop to sign their release inspection. The inspection is optional for agency resources. Agency resources proceed to step 2.
- \_\_\_\_\_ 2. **Supply** – Return any items you checked out. All units must have signature from SUPPLY confirming they have no equipment from the incident.
- \_\_\_\_\_ 3. **Communications** – Return any items you checked out. All units must have signature from COMMUNICATIONS confirming they have no radio equipment from the incident.

**The following stations are located at the ICP, Wind River M. S., 441 Hot Springs Ave.**

- \_\_\_\_\_ 4. **Finance** – Proceed to finance to receive your final timesheet. Having ALL your times turned in and up to date will GREATLY speed up the process.
- \_\_\_\_\_ 5. **Demob** – Final step. Turn the completed Demob form into Check-in and any Documentation. Contact Demob at 509-432-6143 with your estimated time of departure, arrival time and destination. You will not be released from the incident until this is completed.



# HUMAN RESOURCE MESSAGE TUNNEL FIVE FIRE July 10, 2023



## TRANSITION DAY FOR THE TEAM

Today is PNW Team 12's last day managing this fire. Let us keep open the lines of communication and provide critical information as we progress through this day.

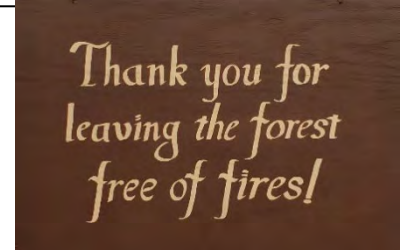
We appreciate everyone's hard work and dedication. We have amazing staff who went out of their way to support the needs of the fire and fire personnel. This Team provided the leadership necessary to overcome the challenges of split camps and virtual meetings and briefings. A lot of challenges and a lot of success. Good Job Everyone!

We also thank the friendly, caring people of the Carson Community for their support during our short stay. Folks here have gone out of their way to provide excellent service to the team and to all fire personnel working on the Tunnel Five Fire.

As you travel home, please make sure you are well rested and ready for the road. Drive carefully and take rest breaks as needed and remember to always "Do What's Right."

### Quote for the Day!

**Change is an event, but a transition is the process that you go thorough in response to the change. ~William Bridges~**



## Be safe and have a good day!

Susie Manezes, Human Resource Specialist NW Team 12 – Contact: 602-571-9327. Located at the Incident Command Post (ICP) Carson, WA. [smanezes@blm.gov](mailto:smanezes@blm.gov)

Diversity, Teamwork, Appropriate Behavior, Mutual Respect...You Make the Difference!



**TO: All Personnel**

**FROM: Washington Department of Natural Resources**

**SUBJECT: Working Around Incarcerated Individuals and DNR Kitchens**

**This is general information and intended to create a safe working environment for you and the incarcerated individuals (I/I), and help you so you do not violate any rules, policies or laws. By reading and understanding the information in this document, you acknowledge you understand these procedures or laws.**

- **NO PERSON IS ALLOWED TO CARRY FIREARMS IN AREAS WHERE I/I ARE WORKING.** It is acceptable to secure weapons in vehicles before entering the working vicinity of I/I.
- **USE OF TOBACCO PRODUCTS IN KITCHEN AREAS IS NOT ALLOWED.** I/I are not allowed to use any tobacco products. Passing tobacco products to an I/I is a criminal violation. Please refrain from using tobacco products within view of I/I. Smoking areas are provided for this purpose.
- **DO NOT GIVE OR TAKE ANYTHING FROM AN I/I.** Adult I/I on DNR crews are rated as minimum custody. I/I are identified by red ball caps or red hard hats.
- **DO NOT DO ANY FAVORS FOR I/I.** Examples include passing on a message, mailing a letter, using a phone, and exchanging money — even change.
- **HARASSMENT OF ANY KIND WILL NOT BE TOLERATED.** All harassment allegations involving I/I will be reported to Human Resources and involved agency representatives. If an I/I subjects you or you subject them to inappropriate comments or actions, this could be a violation of the Prison Rape Elimination Act (PREA) and must be reported immediately. This could cost you your job or even be found as a criminal violation and you could be prosecuted.
- **IN CASE OF EMERGENCY, ACCIDENT OR ILLNESS.** Immediately contact the DNR Kitchen Manager, DNR Crew Supervisor, DNR I/I Crew Liaison, or Department of Corrections staff.
- **PROMPTLY REPORT ANY SUSPICIOUS ACT** to the DNR Kitchen Manager, DNR Crew Supervisor, DNR I/I Crew Liaison, or Department of Corrections staff. The most innocent act or favor can have consequences that could negatively affect an I/I for years.
- **DO NOT TAKE PHOTOS OF OR INTERVIEW I/I.** Without approval from the DNR I/I Crew Liaison or Crew Supervisor.
- **YOUR PRIMARY CONTACT WITH AN I/I CREW WILL ALWAYS BE WITH THE DNR CREW SUPERVISOR.** Examples of primary contacts are: Passing on information, praise for a job well done, asking directions, directing an I/I to perform a task or other assignment.
- **I/I ARE TRAINED IN WORK ETHICS AND JOB SKILLS.** I/I are trained and experienced in their job assignments. They are held accountable for their job performance and behavior.
- **TREAT I/I WITH RESPECT, BUT MAINTAIN THE APPROPRIATE BOUNDARIES.** I/I generally feel good about being part of the fire suppression effort. Treat them with the same respect and dignity as other fire fighters, but don't get personal.
- **ACKNOWLEDGE CREWS FOR A JOB WELL DONE.** *I/I do good work and appreciate the recognition.*
- **BE A GOOD ROLE MODEL.** I/I need good professional role models as part of their rehabilitation process. Consider their presence and set a good example by the context of your conversations and language.

# Logistics Message

## WIND RIVER BASE CAMP INFORMATION

### **FOOD HOURS:**

Breakfast: 0500-0900

Lunches @ Refrigerator Trailer: 0500-2130

Dinner: 1800-2200

### **SHOWER TRAILER:**

OPEN: 0500-1100

CLOSED (for cleaning): 1100-1400

OPEN: 1400-2230

### **SUPPLY HOURS:**

0500-2200

### **LAUNDRY UNIT:**

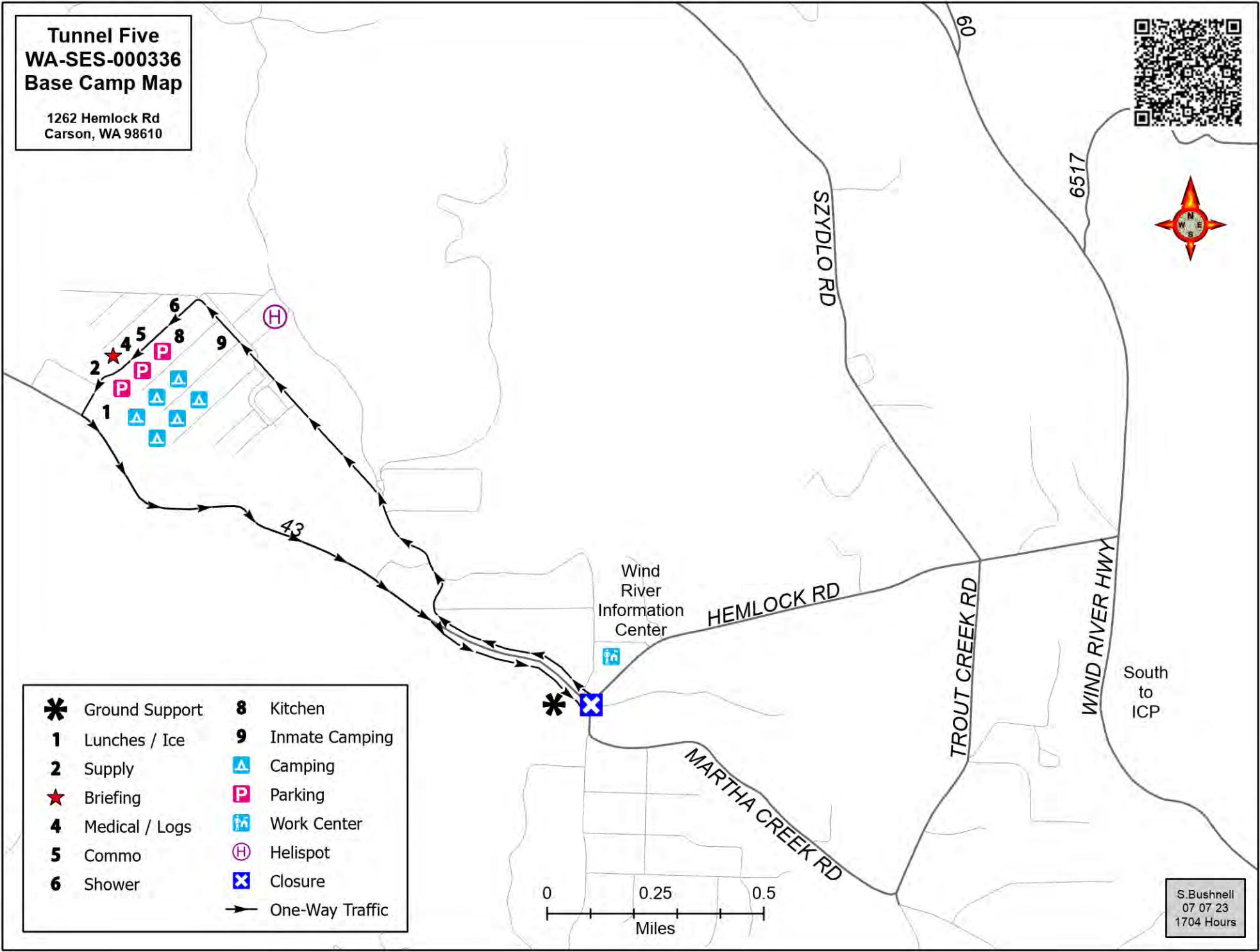
Drop-off / Delivery Hours

0500-1000 and 1700-2200

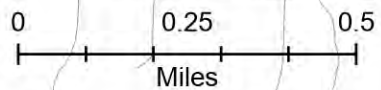
24 Hour Turnaround

**Tunnel Five  
WA-SES-000336  
Base Camp Map**

1262 Hemlock Rd  
Carson, WA 98610



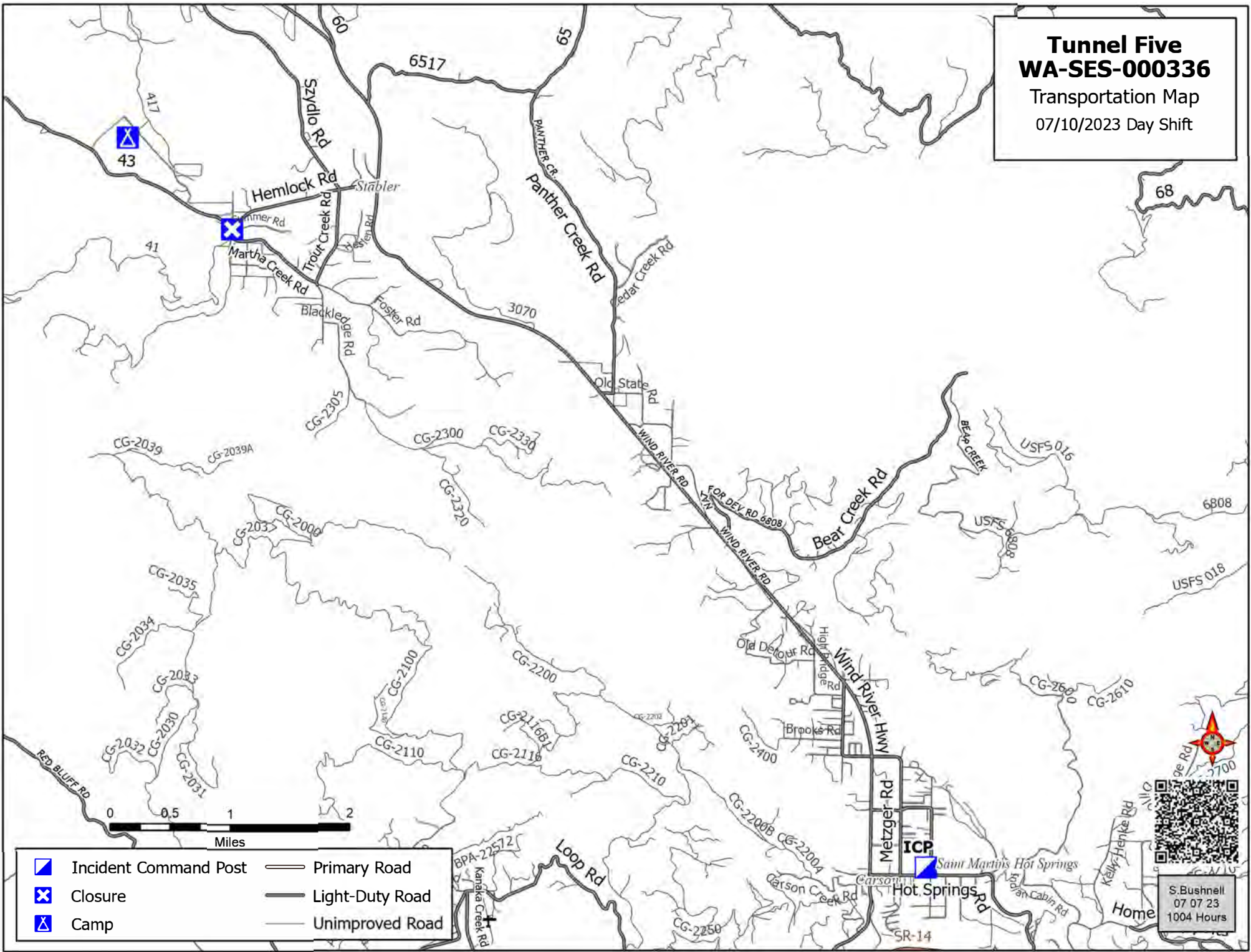
- |                          |                         |
|--------------------------|-------------------------|
| <b>*</b> Ground Support  | <b>8</b> Kitchen        |
| <b>1</b> Lunches / Ice   | <b>9</b> Inmate Camping |
| <b>2</b> Supply          | <b>△</b> Camping        |
| <b>★</b> Briefing        | <b>P</b> Parking        |
| <b>4</b> Medical / Logs  | <b>ⓘ</b> Work Center    |
| <b>5</b> Commo           | <b>Ⓜ</b> Helispot       |
| <b>6</b> Shower          | <b>X</b> Closure        |
| <b>→</b> One-Way Traffic |                         |



S. Bushnell  
07 07 23  
1704 Hours

# Tunnel Five WA-SES-000336

Transportation Map  
07/10/2023 Day Shift

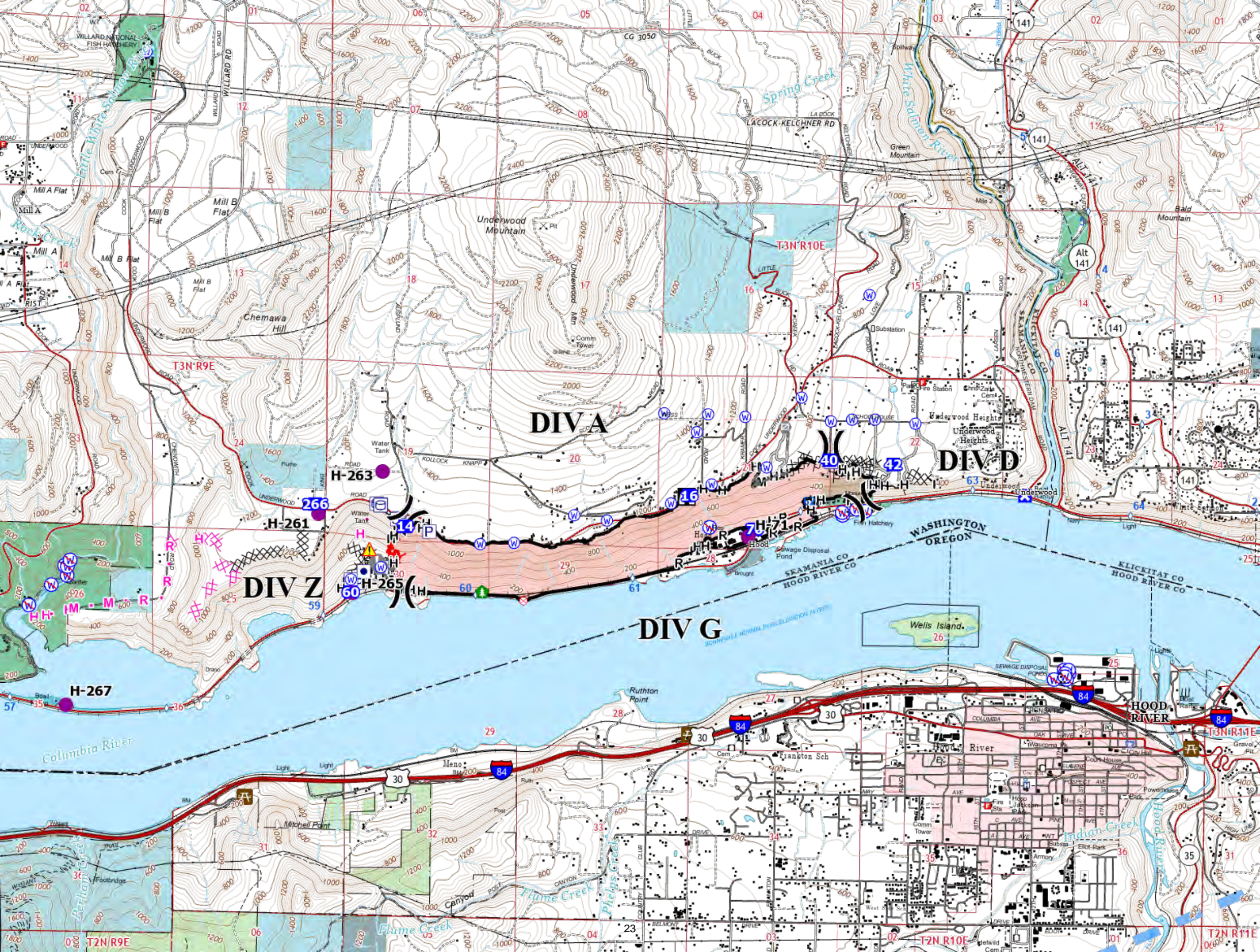


- Incident Command Post
- Closure
- Camp
- Primary Road
- Light-Duty Road
- Unimproved Road



S. Bushnell  
07 07 23  
1004 Hours





DIVA

DIV D

DIV Z

DIV G

T3N R9E

T3N R10E

H-263

H-261

H-265

H-267

266

14

16

40

42

T2N R9E

T2N R10E

T2N R11E

141

Alt 141

141

141

141

141

141

141

141

141

141

141

141

29

28

30

27

30

84

84

84

T3N R11E

25

26

31

36

01

02

03

04

05

06

07

08

09

10

11

12

13

14

15

16

17

01

02

03

04

05

06

07

08

09

10

11

12

13

14

15

16

17

01

02

03

04

05

06

07

08

09

10

11

12

13

14

15

16

17

01

02

03

04

05

06

07

08

09

10

11

12

13

14

15

16

17

01

02

03

04

05

06

07

08

09

10

11

12

13

14

15

16

17

01

02

03

04

05

06

07

08

09

10

11

12

13

14

15

16

17

01

02

03

04

05

06

07

08

09

10

11

12

13

14

15

16

17

01

02

03

04

05

06

07

08

09

10

11

12

13

14

15

16

17

01

02

03

04

05

06

07

08

09

10

11

12

13

14

15

16

17

01

02

03

04

05

06

07

08

09

10

11

12

13

14

15

16

17

01

02

03

04

05

06

07

08

09

10

11

12

13

14

15

16

17

01

02

03

04

05

06

07

08

09

10

11

12

13

14

15

16

17

01

02

03

04

05

06

07

08

09

10

11

12

13

14

15

16

17

01

02

03

04

05

06

07

08

09

10

11

12

13

14

15

16

17

01

02

03

04

05

06

07

08

09

10

11

12

13

14

15

16

17

01

02

03

04

05

06

07

08

09

10

11

12

13

14

15

16

17

01

02

03

04

05

06

07

08

09

10

11

12

13

14

15

16

17

01

02

03

04

05

06

07</



## Incident Maps

For incident maps scan the QR code on the cover of the IAP to open the 'Current Maps' folder.

### How to Download and Open Maps in Avenza

#### Method 1: From a browser

1. Tap on the desired map link and wait for the preview.  
*\* If it fails to load, use method 2 instead*
2. Tap the 'send to' icon (square with up arrow)
3. Choose the Avenza app

#### Method 2: From Avenza direct

1. Tap and hold on the desired map link, then choose 'copy' to copy the direct URL to the map
2. Launch the Avenza app
3. When not in any map... Tap the + (plus) icon at the top of the screen
4. Choose the load from URL option (last choice)
5. Paste the direct URL to the map
6. Tap 'Done' ; the map will begin downloading

### How to Send Map Updates to the Situation Unit

Send map updates by email to [2023.tunnelfive.situation@firenet.gov](mailto:2023.tunnelfive.situation@firenet.gov) or text/call the Situation Unit at 360-584-3373. Make sure to include your name, position and explanation of the update you send.

After you've collected information:

1. Open the map in Avenza.
2. Click the layers icon near the lower-right corner.
3. *iPhone:* In the lower left, click the square with up arrow. From the pop-up menu, choose Export to Others.  
*Android:* In the lower right, click the circle with three lines. Click the pop-up circle with up arrow.
4. Set these options:
  - a. Filename – leave alone
  - b. Export Format – choose SHP, GPX or KML
  - c. Data – all features
  - d. Image size – no image
5. Click Export in the upper-right corner.
6. When the export is ready, choose your Mail application.
7. Send the email to the addresses listed above.
8. Your email needs to include an explanation of the data you are sending.

If you don't have Avenza please draw corrections and new features on your paper map, take a picture of it and email or text it to the email or phone number listed above.

Thanks for your help!

The Situation Unit



Tunnel Five

# MEDICAL EMERGENCY PROCEDURE

**ICP ONLY**

YELL for HELP  
STAY with the patient

CONTACT Medical Unit Leader  
**PHONE (24 Hour)**  
**360-410-0213**

MEDICAL UNIT LEADER WILL START  
APPROPRIATE MEDICAL RESPONSE

Tunnel Five

# MEDICAL EMERGENCY PROCEDURE

## **BASE CAMP ONLY**

YELL for HELP  
STAY with the patient

SEND SOMEONE TO COMMUNICATIONS:  
Communications is located at the COMM Trailer

OR

CONTACT COMMUNICATIONS via RADIO or PHONE  
Communications contact on – **COMMAND Channel(s) 12 and 7**  
Communications **Phone Number – 208-891-8093**

COMMUNICATIONS WILL START  
APPROPRIATE MEDICAL RESPONSE

## Tunnel Five Fire Information:

**Questions from the public or media?** Have them call (971) 800-0411 or follow Southwest Washington Fire Information on Facebook for current information <https://www.facebook.com/SWWaFireInfo> \

**Evacuation questions?** call Skamania County Sheriff's Office (509) 427-9490 or follow <https://www.facebook.com/SkamaniaSheriff>

**There are a few large items at lost and found!**



**Riddle of the day: That's all for this one, folks!**  
(yesterday's answer: The dictionary)



# EMERGENCY PLAN INCIDENT WITHIN AN INCIDENT

## ON SCENE INCIDENT COMMANDER

In the event of an accident or medical incident of any size, your primary responsibility is to ENSURE that the victim(s) receive prompt and effective Triage, Treatment, Extrication and Transport.

- **ENSURE THE MEDICAL INCIDENT REPORT IN THE INCIDENT ACTION PLAN IS BEING USED AND FOLLOWED- \*IF DETERMINED TO BE A GREEN, DO NOT DECLARE EMERGENCY TRAFFIC AND ONLY COMPLETE LINE 1-4 ON MIR\*.**
- Conduct size-up of the incident nature of accident, number type of resources involved, latitude and longitude location (DD°MMM.MM format): notify incident communications center and supervisor, request assistance as needed.
- Order and coordinate medical and support response to the accident.
- Evaluate special needs (law enforcement, haz mat, etc.).
- Clear the command frequency if medical emergency, coordinate with incident communications and air attack for air medical transportation needs.
- Preserve and photograph the scene for accident investigation.
- Remain aware of surroundings and the status of the main incident (delegate personnel to monitor the main fire) to ensure safety of medical treatment personnel.
- Until relieved, supervise and manage all personnel involved at the incident scene.

# Medical Plan ICS-206

Incident/Project Name	Operational Period
Tunnel Five Fire	Date/Time 7/10/23 0600 – 1800

## Ambulance Services

Name	Complete Address	Phone	Advanced Life Support	
			Yes	No
Skamania County	Multiple Locations	911	X	
Klickitat EMS	White Salmon	911	X	

## Air Ambulance Services

Name	Phone	Type of Aircraft & Capability
Life Flight	800-232-0911	Rotor from Dallesport 20 mins to Carson
Life Flight	800-232-0911	Rotor from Longview 45 min to Carson
Airlift NW	800-426-2430	Rotor from Olympia 60 min to Carson

## Hospitals

Name/ Address	GPS Datum – WGS 84		Travel Time		Phone	Helipad		Level
	Lat:	Long:	Air	Gnd		Yes	No	
Legacy Emmanuel Burn Center Portland	N 45°32'40.844W	122°40'10.484	20	56	503-413-2285	X		Burn Center Level 1 Trauma
PeaceHealth SW Vancouver	N 45° 37.466	W 122° 34.844	20	56	360-514-3666	X		Level 2 Trauma
Skyline Hospital 211 NE Skyline Dr White Salmon	N 45°23.323	W 121°28.232	10	36	509-637-2952	X		Level 4 Trauma
OHSU Portland	N 45° 2956.9900	W 122° 4106.6000	15	59	503-494-7333	X		Level 1 Trauma

Division	Resources
Div A	Skamania Ambulance 72 (E-18)
Div D	Call for nearest resource
Div G	Medic 1 (A. Zalozh O-54) Med Transport Ambulance (E-19)
Div Z	Thurston County REM (O-33)

## Special Medical Emergency Procedures:

Medical Units are provided at ICP and Wind River base camp.

Follow the medical incident report for all medical emergencies.

Prepared By (MEDL)	Date	Reviewed By (Safety)	10. Date
Eamonn Ryan	07/09/23		

## Medical Incident Report

# MEDICAL PLAN (ICS 206 WF)

Controlled Unclassified Information//Basic

## Medical Incident Report

**FOR A NON-EMERGENCY INCIDENT, WORK THROUGH CHAIN OF COMMAND TO REPORT AND TRANSPORT INJURED PERSONNEL AS NECESSARY.**

**FOR A MEDICAL EMERGENCY: IDENTIFY ON SCENE INCIDENT COMMANDER BY NAME AND POSITION AND ANNOUNCE "MEDICAL EMERGENCY" TO INITIATE RESPONSE FROM IMT COMMUNICATIONS/DISPATCH.**

Use the following items to communicate situation to communications/dispatch.

1. CONTACT COMMUNICATIONS / DISPATCH (**Verify correct frequency prior to starting report**)

*Ex: "Communications, Div. Alpha. Stand-by for Emergency Traffic."*

2. INCIDENT STATUS: *Provide incident summary (including number of patients) and command structure.*

*Ex: "Communications, I have a Red priority patient, unconscious, struck by a falling tree. Requesting air ambulance to Forest Road 1 at (Lat./Long.) This will be the Trout Meadow Medical, IC is TFLD Jones. EMT Smith is providing medical care."*

Severity of Emergency / Transport Priority	<input type="checkbox"/> RED / PRIORITY 1 Life or limb threatening injury or illness. Evacuation need is IMMEDIATE <i>Ex: Unconscious, difficulty breathing, bleeding severely, 2° – 3° burns more than 4 palm sizes, heat stroke, disoriented.</i> <input type="checkbox"/> YELLOW / PRIORITY 2 Serious Injury or illness. Evacuation may be DELAYED if necessary. <i>Ex: Significant trauma, unable to walk, 2° – 3° burns not more than 1-3 palm sizes.</i> <input type="checkbox"/> GREEN / PRIORITY 3 Minor Injury or illness. Non-Emergency transport <i>Ex: Sprains, strains, minor heat-related illness.</i>	
Nature of Injury or Illness & Mechanism of Injury		<i>Brief Summary of Injury or Illness (Ex: Unconscious, Struck by Falling Tree)</i>
Transport Request		<i>Air Ambulance / Short Haul/Hoist Ground Ambulance / Other</i>
Patient Location		<i>Descriptive Location &amp; Lat. / Long. (WGS84)</i>
Incident Name		<i>Geographic Name + "Medical" (Ex: Trout Meadow Medical)</i>
On-Scene Incident Commander		<i>Name of on-scene IC of Incident within an Incident (Ex: TFLD Jones)</i>
Patient Care		<i>Name of Care Provider (Ex: EMT Smith)</i>

3. INITIAL PATIENT ASSESSMENT: *Complete this section for each patient as applicable (start with the most severe patient)*

Patient Assessment: See IRPG page 106

Treatment:

4. TRANSPORT PLAN:

Evacuation Location (if different): *(Descriptive Location (drop point, intersection, etc.) or Lat. / Long.)* Patient's ETA to Evacuation Location:

Helispot / Extraction Site Size and Hazards:

5. ADDITIONAL RESOURCES / EQUIPMENT NEEDS:

*Example: Paramedic/EMT, Crews, Immobilization Devices, AED, Oxygen, Trauma Bag, IV/Fluid(s), Splints, Rope rescue, Wheeled litter, HAZMAT, Extrication*

6. COMMUNICATIONS: Identify State Air/Ground EMS Frequencies and Hospital Contacts as applicable

Function	Channel Name/Number	Receive (RX)	Tone/NAC *	Transmit (TX)	Tone/NAC *
COMMAND					
AIR-TO-GRND					
TACTICAL					

7. CONTINGENCY: **Considerations:** *If primary options fail, what actions can be implemented in conjunction with primary evacuation method? Be thinking ahead.*

8. ADDITIONAL INFORMATION: *Updates/Changes, etc.*

**REMEMBER:** Confirm ETA's of resources ordered. Act according to your level of training. Be Alert. Keep Calm. Think Clearly. Act Decisively.

Controlled Unclassified Information//Basic