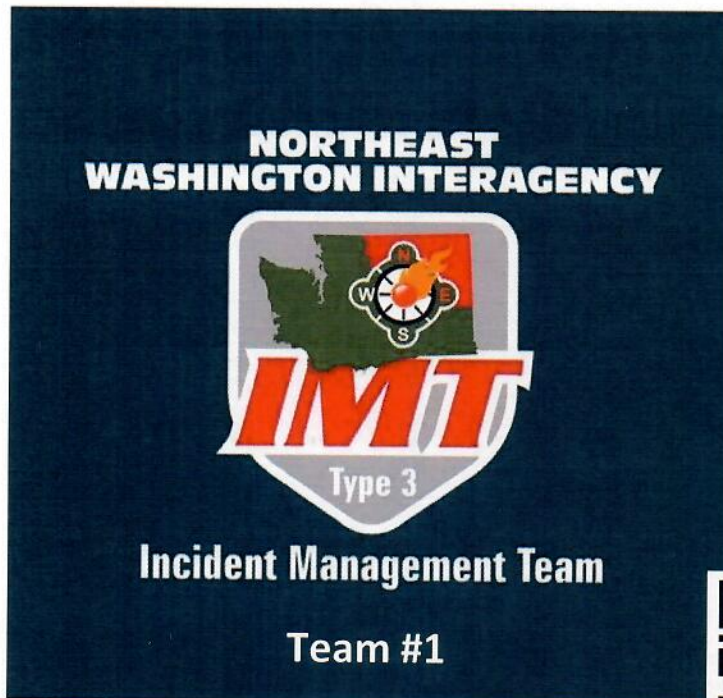

INCIDENT ACTION PLAN

WEST HALLETT & WEST ANDERSON FIRE



For maps, evaluations, and
IAPs Scan the QR Code!

Saturday, August 5, 2023

0600-2000 Operational Period

West Hallett

WA-NES-001779

221-JDU

PNQGN3

West Anderson

WA-NES-001795

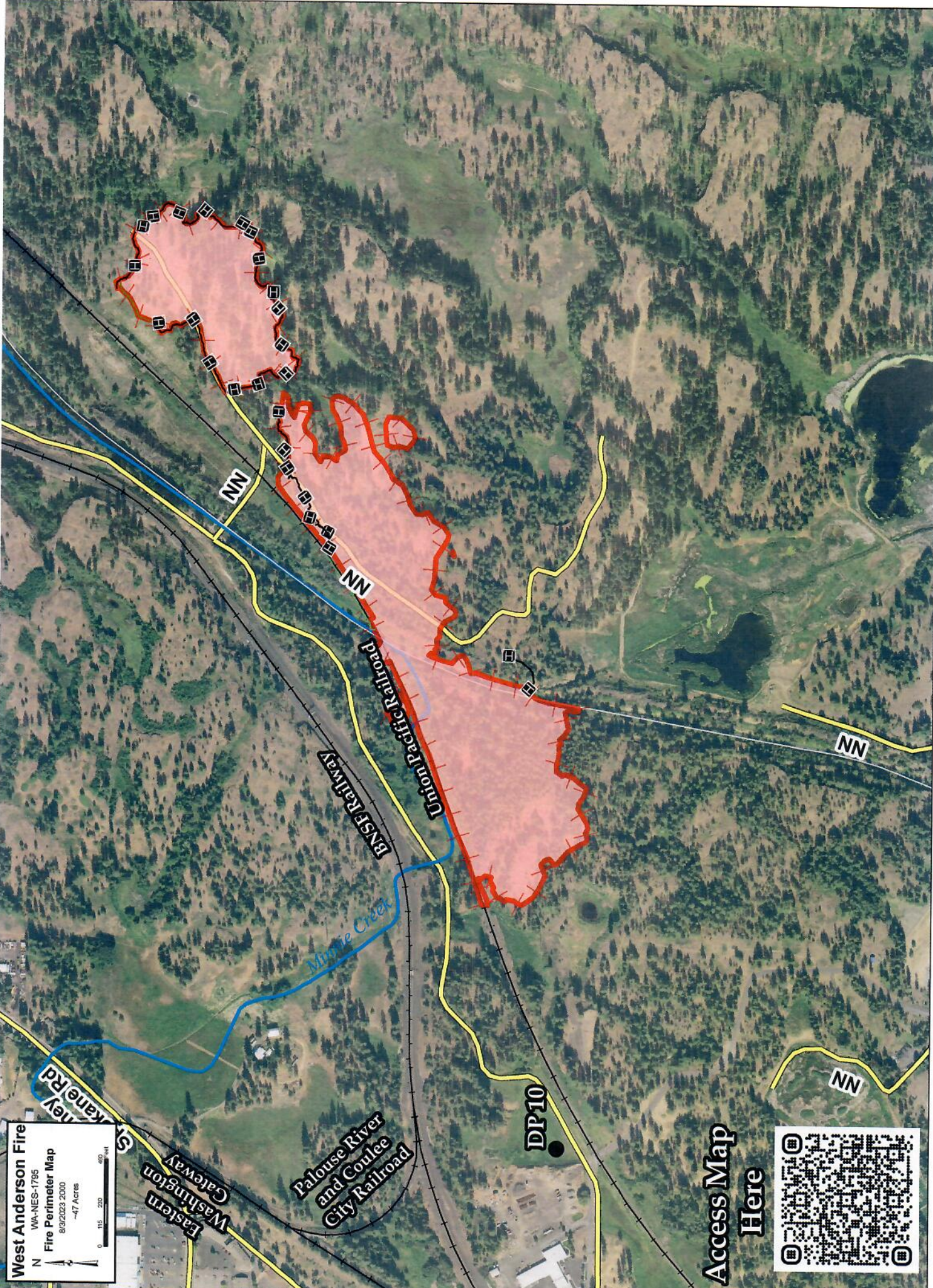
221-JEC

PNQG60

Incident Objectives	1. Incident Name West Hallett & West Anderson	2. Date Prepared 8/4/2023	3. Time Prepared 1700
4. Operational Period (Date and Time) 8/5/2023 0600-2000			
5. General Control Objectives for the Incident (include Alternatives)			
<ul style="list-style-type: none"> • Provide for firefighter and public safety at all times. This includes the application of the "10 and 18", LCES, and the Risk Management Process. • Ensure structures and infrastructure are properly identified and mopped up around • Minimize acres burned. • Act professionally and in a manner that fosters good relationships with the public, private landowners, timber industry representatives, elected officials and other stakeholders. • Follow agency policies at all times and respect the policies of the host agency. • Maximize opportunities for cost savings without jeopardizing public or firefighter safety • Provide timely communications and accurate information as it becomes available. 			
6. Weather Forecast for Operational Period			
See attached weather forecast			
7. General Safety Message			
<ul style="list-style-type: none"> • Provide for firefighter and public safety at all times. • Monitor compliance of 10 and 18 by all incident personnel. • Adhere to 2:1 work/rest ratio for all fire line personnel. • Aviation safety is high priority. Assess the risk against the benefit of the mission. • Ensure all assigned personnel understand emergency medical reporting & transport procedures including locations of nearest emergency responders & facilities. 			
8. Attachments (check if attached)			
ICS-202	9. Prepared by (PSC) Jessica Walston	10. Approved by (IC) <i>Craig E. Dubble</i>	

DIVISION ASSIGNMENT LIST			1. Branch		2. Division / Group		
3. Incident Name West Hallett & West Anderson			4. Operational Period Date: 8/5/2023 Time: 0600-2000				
5. Operations Personnel							
Planning Ops		<i>Brock Campbell (O-18)</i>		Field Ops		<i>Aaron Coe (O-28)</i>	
Safety Officer		<i>Bob Schwiesow (O-19)</i>		Division/Group Supervisor		<i>Brock Schuh (O-1.5)</i>	
6. Resources Assigned this Period							
RO #	Strike Team/Task Force/Resource	Leader	# People	Contact (phone, radio freq, etc.)	EMT	LWD	Remarks
O-17p	STL South Puget Sound	Jordan Simmonds	1	206-679-4839	14		1 MEDIC
E-1p	ENG6 - Eastside Brush 133		3				
E-2p	ENG6 - Eastside Brush 182		3				
E-3p	ENG6 - Bothell Brush 144		3				
E-4p	ENG6 - Shoreline Brush 161		3				
E-6p	WST2 - VRFA Tender 334		2				
C-1	HC2IA - BLM - SRV 1	ANDRES HERNANDEZ	24			13-Aug	
C-2	HC2IA - BLM - SRV 2	JAIME MEDRANO	22			13-Aug	
O-1.14	TFLD	DARYL SCHIE	1	509-680-8093			
O-7	TFLD	ALEX NAGYGYOR	1	360-951-5053			
O-8	FMOD BEN NEWMAN - MOD 1	COLE HARRIS	2				
O-9	FMOD - BEN NEWMAN - MOD 2	AUSTIN ROSS/OZZY	2				
			67				
7. Work Assignments							
<ul style="list-style-type: none"> - Mop up 100ft off perimeter - Snag 							
8. Special Instructions							
9. Communication Summary							
Function	Name	Mode	Frequency				
COMMAND	CMD2	A	RX: 159.3675 Tone: 156.7 TX: 151.4675 Tone 156.7				
TACTICAL DIV A	VTAC11	A	RX: 151.1375 Tone 0.0 TX: 151.1375 Tone 156.7				
TACTICAL DIV H	VTAC12	A	RX: 154.4525 Tone 0.0 TX: 154.4525 Tone 156.7				
AIR TO GROUND	A/G 1	A	RX: 159.2700 Tone: 103.5 TX: 159.2700 TX: 103.5				
AIR TO GROUND	A/G 2	A	RX: 151.2875 Tone: 103.5 TX: 151.2875 TX: 103.5				
Prepared by (RESL)		Approved by (PSC)		Date:	Time:		
		Jessica Walston		8/1/2023	1500		

DIVISION ASSIGNMENT LIST			1. Branch	2. Division / Group				
3. Incident Name West Hallett & West Anderson			4. Operational Period Date: 8/5/2023 Time: 0600-2000				A 2/2	
5. Operations Personnel								
Planning Ops		<i>Brock Campbell (O-18)</i>		Field Ops		<i>Aaron Coe (O-28)</i>		
Safety Officer		<i>Bob Schwiesow (O-19)</i>		Division/Group Supervisor		<i>Brock Schuh (O-1.5)</i>		
6. Resources Assigned this Period								
RO #	Strike Team/Task Force/Resource	Leader	# People	Contact (phone, radio freq, etc.)	EMT	LWD	Remarks	
E-6	ENG6 - AEGIS LOG LLC - 304739	EVANS	3	509-793-0899	1			
E-7	ENG6 - THET AMERICAN FF - A45554	LIPHART	3	614-425-8559				
E-8	ENG6 - AEGIS LOG LLC - A80075	HENDRIX	3	509-998-1129				
E-11	ENG6 - NORTHRIDGE WILDFIRE, LLC - 170442	BRAD BECK	3	509-599-1459				
E-12	ENG6 Northern Columbia Refor - 501010	KEVIN JAYICH	3	928-595-1622				
E-1	WTS2 - I&w UNLIMITED LLC - 252288	JIM SIECK	1					
E-2	WTS2 - TODD ANDERSON EX - 387166	JOSHUA APHORP	1	509-215-0609				
E-4	WTS2 - OUTBACK FIREFIGHTING, INC. - 110527	TERRY LEAKE	1					
E-29	AMB3 - MEDIC 32 - SPOFR	MATT MCGEHEE & JACOB HOUGE	2		X		Dorset and Hallett DP	
			20					
7. Work Assignments								
<ul style="list-style-type: none"> - Mop up 100ft off perimeter - Snag 								
8. Special Instructions								
9. Communication Summary								
Function	Name	Mode	Frequency					
COMMAND	CMD2	A	RX: 159.3675 Tone: 156.7 TX: 151.4675 Tone 156.7					
TACTICAL DIV A	VTAC11	A	RX: 151.1375 Tone 0.0 TX: 151.1375 Tone 156.7					
TACTICAL DIV H	VTAC12	A	RX: 154.4525 Tone 0.0 TX: 154.4525 Tone 156.7					
AIR TO GROUND	A/G 1	A	RX: 159.2700 Tone: 103.5 TX: 159.2700 TX: 103.5					
AIR TO GROUND	A/G 2	A	RX: 151.2875 Tone: 103.5 TX: 151.2875 TX: 103.5					
Prepared by (RESL)		Approved by (PSC)			Date:	Time:		
		Jessica Walston			8/4/2023	1700		



West Anderson Fire
WA-NES-1795
Fire Perimeter Map
8/3/2023 2000
~47 Acres

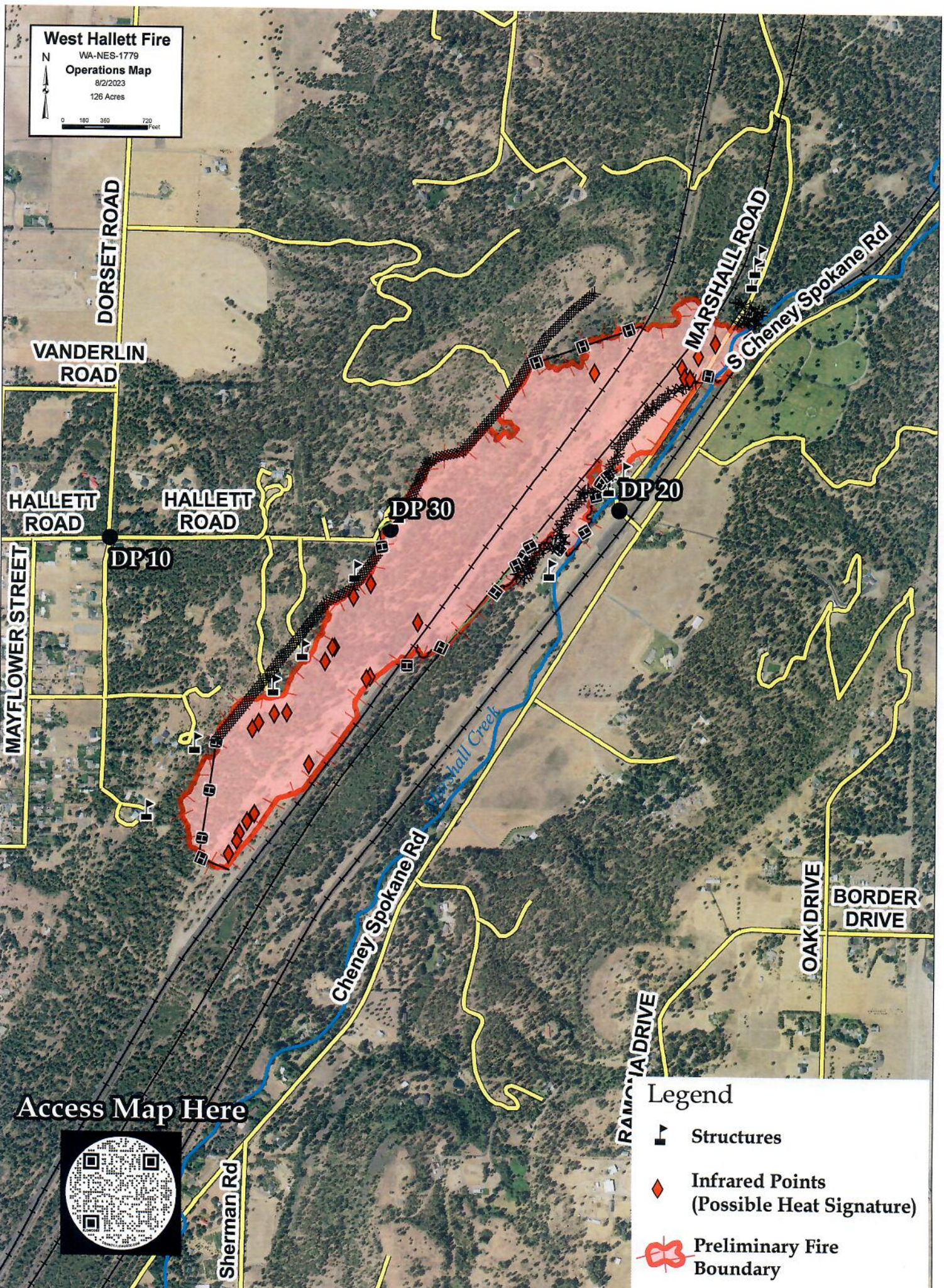
N
0 115 230 460 Feet

**Access Map
Here**



DIVISION ASSIGNMENT LIST			1. Branch	2. Division / Group	H		
3. Incident Name West Hallett & West Anderson			4. Operational Period Date: 8/5/2023 Time: 0600-2000				
5. Operations Personnel							
Planning Ops		<i>Brock Campbell (O-18)</i>		Field Ops		<i>Aaron Coe (O-28)</i>	
Safety Officer		<i>Bob Schwiesow (O-19)</i>		Division/Group Supervisor		<i>Gene Phillips (O-6)</i>	
6. Resources Assigned this Period							
RO #	Strike Team/Task Force/Resource	Leader	# People	Contact (phone, radio freq, etc.)	EMT	LWD	Remarks
E-3	WTS2 SKWANT	Severen Carden	1	509-634-6134			
E-5	ENG5 - CHEWACK WILDFIRE INC - 171471	ANDREW GRAVES	3				
E-9	ENG6 - AEGIS LOG LLC - 199085	VARNEY	3		1		
E-10	ENG6 - AEGIS LOG LLC - 161373	WIGGINS	3				
E-13	ENG6 - SHANE C INNES SR - 801837	JEFF HERRON	3	509-797-1878			
E-14	ENG4 - CURTIS T. PUMPHREY - A34803	NICHOLS	3				
LOL	HEIGHTS 43		11				
			26				
7. Work Assignments							
- Rehab							
8. Special Instructions							
9. Communication Summary							
Function	Name	Mode	Frequency				
COMMAND	CMD2	A	RX: 159.3675 Tone: 156.7 TX: 151.4675 Tone 156.7				
TACTICAL DIV A	VTAC11	A	RX: 151.1375 Tone 0.0 TX: 151.1375 Tone 156.7				
TACTICAL DIV H	VTAC12	A	RX: 154.4525 Tone 0.0 TX: 154.4525 Tone 156.7				
AIR TO GROUND	A/G 1	A	RX: 159.2700 Tone: 103.5 TX: 159.2700 TX: 103.5				
AIR TO GROUND	A/G 2	A	RX: 151.2875 Tone: 103.5 TX: 151.2875 TX: 103.5				
Prepared by (RESL)		Approved by (PSC) Jessica Walston			Date:	Time:	
					8/4/2023	1700	




West Hallett Fire
 WA-NES-1779
Operations Map
 8/2/2023
 126 Acres


[Access Map Here](#)



Legend

-  Structures
-  Infrared Points
(Possible Heat Signature)
-  Preliminary Fire
Boundary

WEATHER	1. Incident Name West Hallett & West Anderson	2. Date Prepared 8/4/2023	3. Time Prepared 1700
<p>Forecast is based on forecast start time of 0500 PDT on August 05. If conditions become unrepresentative...contact the National Weather Service.</p>			
<p>.DISCUSSION...</p>			
<p>There are widespread scattered thunderstorm chances Saturday and Sunday (40-60%) with potential for >0.1 inch of rain in 15 minutes. Temperatures Saturday will be 3 to 6 degrees cooler than Friday with humidities rising 10%. That trend will continue into Sunday. Thunderstorm chances decrease to 20-40% Monday and Tuesday. Gusty and erratic winds will develop near any storms that develop.</p>			
<p>.SATURDAY...</p>			
<p>Sky/weather.....Mostly cloudy. Chance of thunderstorms increasing from 20% at 1000 to 40% by 1700 PDT. CWR.....40 percent. LAL.....3. Max temperature.....Around 83. Min humidity.....35 percent. Wind (20 ft).....South winds shifting to east/northeast winds 4 to 9 mph by 1400. Gusty and erratic winds expected near thunderstorms. Mixing height.....6000 ft AGL. Transport winds.....East around 10 mph. Haines Index.....2 Very Low.</p>			
<p>.SATURDAY NIGHT...</p>			
<p>Sky/weather.....Cloudy. Chance (40%) of thunderstorms overnight. CWR.....40 percent. LAL.....3. Min temperature.....Around 59. Max humidity.....93 percent. Wind (20 ft).....North/northeast winds 3 to 6 mph. Gusty and erratic winds expected near thunderstorms. Mixing height.....Near surface. Transport winds.....Northeast around 9 mph. Haines Index.....2 Very Low.</p>			
<p>.SUNDAY...</p>			
<p>Sky/weather.....Mostly cloudy. Chance (60%) of thunderstorms before 1700 PDT. Decreasing to 15% by 2100 PDT. CWR.....55 percent. LAL.....3. Max temperature.....Around 79. Min humidity.....49 percent. Wind (20 ft).....Northeast winds shifting to south winds 4 to 7 mph in the afternoon. Gusty and erratic winds expected near thunderstorms. Mixing height.....5000 ft AGL. Transport winds.....South around 7 mph.</p>			

INCIDENT RADIO COMMUNICATIONS PLAN I-205				1. INCIDENT NAME		2. DATE/TIME PREPARED		3. OPERATIONAL PERIOD DATE/TIME			
				W. HALLETT FIRE/ W. ANDERSON RD. FIRE		8/4/23 1425 HRS		8/5/2023 0600-1800 (DAY SHIFT)			
4. BASIC RADIO CHANNEL UTILIZATION											
Ch #	Function	Channel Name	Assignment	RX Freq	N/W	RX Tone/NAC	TX Freq	N/W	TX Tone/NAC	Mode Analog (A) Digital (D) Mixed (M)	Remarks
1	COMMAND	DNR DP	CMD	159.4050	N	156.7	151.2500	N	156.7	A	DNR DEER PARK
2	COMMAND	DNR CHNY	CMD	159.3675	N	156.7	151.4675	N	156.7	A	DNR CHENEY
3	COMMAND	DNR COLV	CMD	159.4350	N	156.7	151.1600	N	156.7	A	DNR COLVILLE
4	COMMAND	DNR OKAN	CMD	159.3150	N	156.7	151.3025	N	118.8	A	DNR OKANOGAN
5	COMMAND	DNR TONASK	CMD	159.3675	N	118.8	151.2575	N	156.7	A	DNR TONASKET
6	COMMAND	SRMA 3V	CMD	153.9350	N	110.9	159.0300	N	179.9	A	SRMA 3V
7	TAC	DNR COMM	TAC	151.4150	N	103.5	151.4150	N	103.5	A	DNR COMMON
8	TAC	DNR TAC1	TAC	151.3100	N	103.5	151.3100	N	103.5	A	DNR TAC 1
9	TAC	DNR TAC2	TAC	151.3400	N	103.5	151.3400	N	103.5	A	DNR TAC 2
10	TAC	VTAC 11	TAC	151.1375	N	0.0	151.1375	N	156.7	A	VTAC 11
11	TAC	VTAC 12	TAC	154.4525	N	0.0	154.4525	N	156.7	A	VTAC 12
12	TAC	VTAC 13	TAC	158.7375	N	0.0	158.7375	N	156.7	A	VTAC 13
13	A/G	A/G 1	A/G	159.2700	N	103.5	159.2700	N	103.5	A	AIR-GROUND 1
14	A/G	A/G 2	A/G	151.2875	N	103.5	151.2875	N	103.5	A	AIR-GROUND 2
15	A/G	A/G 3	A/G	166.6125	N	0.0	166.6125	N	0.0	A	AIR-GROUND 3
16	A/G	A/G 51	A/G	168.3125	N	0.0	168.3125	N	0.0	A	AIR-GROUND 51
5. Special Instructions: IF THERE ARE COMMUNICATIONS ISSUES PLEASE CONTACT COMM'S TRAILER											
6. I-205 Prepared By: Communications Unit Leader				Name: Aaron Porter, COMMT(t)				Signature: 			

Incident:
West Hallett/West Anderson

Date:
8/5/2023

Operational Period:
Day



SAFETY MESSAGE



Fire fighter safety comes first on every fire, every time

Lookouts Communications Escape Routes Safety Zones

Make Sure LCES Is In Place

Each firefighter must know the interconnection of LCES - lookouts, communications, escape routes, and safety zones. LCES should be established before fighting the fire: Select lookouts, set up a communications plan, choose escape routes, and select safety zones.

MAJOR HAZARDS AND RISKS

- Snags—heads up!
- Steep slopes, rolling material—watch footing
- Dehydration—drink plenty of fluids
- Driving- weekend heavy traffic

When trees are present, snags are a threat.

- **TAKE CHARGE** of assigned resources
- **MOTIVATE** crewmembers with a “can do” safety attitude
- **DEMONSTRATE INITIATE** by taking action in the absence of orders
- **COMMUNICATE** by giving specific instructions and asking for feedback
- **SUPERVISE** at the scene of the action

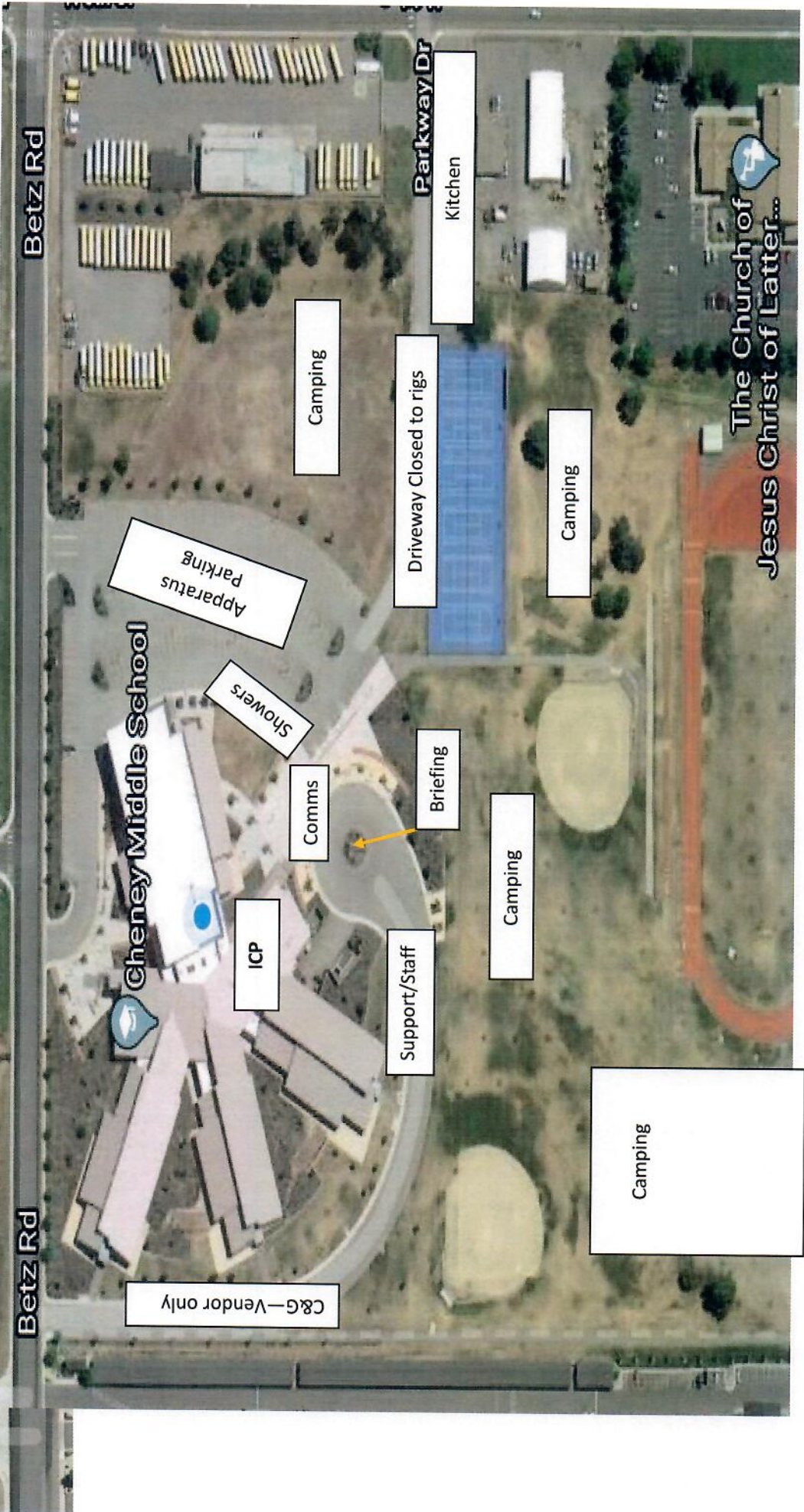
Mop Up Operations	<ul style="list-style-type: none">• Watch for stump holes and spray nozzle ash.• Stay alert for falling snags. Watch for each other.• Warn to not be complacent. Keep your mind focused on your work.• Wear proper and good condition fire boots to avoid slips and falls.• Pull brush straight-don't twist your backs, wear eye protection.• Lift hose with legs-not the back; don't twist backs with loads.• Go slowly and watch your step on steep slopes; watch spacing.• Keep your mind focused on your work. Don't forget to look up.• Use chain guards when transporting saws, DO NOT drop start saws!
-------------------	---

Line Safety Officers

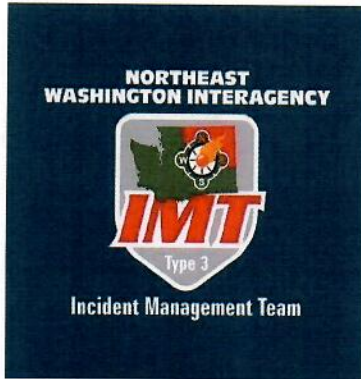
Safety Officer

Bob Schwiesow

1. Incident/Project Name		2. Operational Period					
West Hallett Fire and West Anderson Fire		8/5/2023 Day Shift					
3. Ambulance Services							
Name	Complete Address	Phone & EMS Frequency		Advanced Life Support (ALS)			
American Medical Response	Spokane WA	911		YES			
4. Air Ambulance Services							
Name	Phone	Type of Aircraft & Capability					
Lifeflight Network	911 - Request Air	Advance Life Support					
5. Hospitals							
Name Complete Address	GPS Datum		Travel Time Air Gnd		Phone	Helipad	Level of Care Facility
Providence Sacred Heart 101 W 8th Spokane WA	Lat:	N 47 38.95	10	20	509-474-3131	Yes	Level 2 Trama Center
	Long:	W 117 24.78					
	VHF:	HEAR					
Deaconess Hospital 800 W 5th AVE Spokane	Lat:	N 47 39.1	10	20	509-458-5800	Yes	Level 3 Trama Center
	Long:	W 117 25.46					
	VHF:	HEAR					
Holy Family Hospital 5633 N Lidgerwood Spokane, WA	Lat:	47.71083	15	30	509-474-3342	Yes	Level 3 Trama Center
	Long:	-117.40697					
	VHF:	HEAR					
	Lat:						
	Long:						
	VHF:						
	Lat:						
	Long:						
	VHF:						
6. All Divisions		Area Location Capability					
Identify crew EMTs on the line for each Division prior to engaging. In case of urgent situation, notify your supervisor and follow the MEDICAL INCIDENT REPORT "ICS 206" procedure on the back page of the IAP. Cal 911 and notify operations of needs and location on command channel. Operations will notify NEWICC and base camp. Minimize radio traffic and maintain situational awareness.							
8. Prepared By		9. Date/Time	10. Reviewed By (PSC)		11. Date/Time		
Marty Long		8/1/2023 @ 1100	Marty Long		8/1/2023 @ 1100		



The Church of Latter...
Jesus Christ of Latter...



West Hallett Fire

West Anderson Fire

NE WA IMT #1

Briefings

0600 - Day Shift Briefing - Outside

Meal Times

Breakfast – 0500- 0900

Lunch – 1200 - 1300

Dinner - 1800 - 2200

Showers

0500-1100

1400-2200

***No Smoking on School Grounds**

PIO MESSAGE	1. Incident Name West Hallett & West Anderson	2. Date Prepared 8/4/2023	3. Time Prepared 1700
--------------------	---	-------------------------------------	---------------------------------

When working around each other remember that we are all here to help each other be successful.

BE KIND AND WORK HARD

If you take pictures and are willing to share them with us, please text them to (509) 481-7064.

We would love to share with the community how hard you are working.

If questions arise please direct them to Eric Keller the PIO for the fire at (509) 481-7064.



9. Prepared by (Name and Position)

Eric Keller PIO

Department of Natural Resources
**NE REGION IMT SUPPRESSION REHABILITATION
STANDARDS FOR DNR PROTECTED LANDS**

All Tractor and Hand Lines

- Place water bars on tractor and hand lines with the following spacing guidelines:
 - 6-9% slope - maximum of 300' apart
 - 10-15% slope - maximum of 200' apart
 - 15-25% slope – maximum of 100' apart
 - 25% to 45% slope – maximum of 50' apart
 - Greater than 45% slope – every 25-50'

**Spacing distances above should only be used as a guide. Use judgment in locating water bars to minimize soil erosion potential.

- Pull soil, litter, duff and debris removed from the fire line back onto the line to cover non-fire perimeter hand lines.
- Flatten large berms on all fire lines.
- Leave all freshly fallen trees as they lay. Do not limb or buck.
- Fire lines through damp or wet areas/riparian zones need to be rehabbed by hand if possible, or by the lightest equipment possible, with the least number of stream crossings. If damage is minimal, consider the possibility of not doing additional work.
- Block road access to hand and dozer lines to discourage recreational use. Attempt to visually obscure junction of line and road and make travel on first section very inconvenient (i.e. it will be too much trouble to access the line to be worth it, especially for motorcycles).
- Disperse large concentrations of unburned fuels created during suppression efforts

Tractor Lines

- **Tractor lines on slopes less than 40%:**
 - Water bars may be installed by tractor or track mounted excavator. Use of excavator is preferred where berms need to be pulled in. Pile smaller debris and slash at the outlet of water bars.
 - Use only D-6 class or smaller tractors, 4 or 6-way blade preferred
 - Install tractor or excavator water bars at a 20 to 30-degree angle to the fire line
 - Height of bars on machines constructed water bars not to exceed 24".
 - Rip areas of compacted soil.
- **Tractor lines on slopes greater than 40%**
 - Install water bars by hand or with an excavator
 - Install water bars at a 30 to 45-degree angle to the fire line.

Hand Lines

- Height of hand constructed water bars should average 12 inches. In light soils, water bars should be at least 12 inches high. In heavier soils, bar heights of 8-12" are acceptable.
- For hand line rehab, construct water bars at a 45-degree angle from the line, directing water away from the fire or other parts of the fire line if possible.

Trees and Felling Operations

- Leave all freshly fallen trees as they lay. Do not limb or buck.
- Avoid cutting trees and snags >20" dbh. Do not cut or damage any green non-hazardous trees anywhere within the fire area unless the tree has been specifically marked for felling by the rehab team.

General Repair Concerns

- Identify and inventory fences, signs, and other improvements damaged by the incident
- Repair road damage incurred during incident suppression. This includes road drainage features such as rolling dips and water bars.
- Remove garbage, litter, etc, from control lines, roads, drop points, and staging areas and dispose off-site.
- Signs/flagging removal: All signs and flagging will be removed from fire lines, roads, drop points, staging areas, camps, and water chances.

MEDICAL PLAN (ICS 206 WF)

Controlled Unclassified Information//Basic

Medical Incident Report

FOR A NON-EMERGENCY INCIDENT, WORK THROUGH CHAIN OF COMMAND TO REPORT AND TRANSPORT INJURED PERSONNEL AS NECESSARY.

FOR A MEDICAL EMERGENCY: IDENTIFY ON-SCENE INCIDENT COMMANDER BY NAME AND POSITION AND ANNOUNCE "MEDICAL EMERGENCY" TO INITIATE RESPONSE FROM IMT COMMUNICATIONS/DISPATCH.

Use the following items to communicate situation to communications/dispatch.

1. CONTACT COMMUNICATIONS / DISPATCH (Verify correct frequency prior to starting report)

Ex: "Communications, Div. Alpha. Stand-by for Emergency Traffic."

2. INCIDENT STATUS: Provide incident summary (including number of patients) and command structure.

Ex: "Communications, I have a Red priority patient, unconscious, struck by a falling tree. Requesting air ambulance to Forest Road 1 at (Lat./Long.) This will be the Trout Meadow Medical, IC is TFLD Jones. EMT Smith is providing medical care."

Severity of Emergency / Transport Priority	<input type="checkbox"/> RED / PRIORITY 1 Life or limb threatening injury or illness. Evacuation need is IMMEDIATE Ex: Unconscious, difficulty breathing, bleeding severely, 2° - 3° burns more than 4 palm sizes, heat stroke, disoriented. <input type="checkbox"/> YELLOW / PRIORITY 2 Serious Injury or illness. Evacuation may be DELAYED if necessary. Ex: Significant trauma, unable to walk, 2° - 3° burns not more than 1-3 palm sizes. <input type="checkbox"/> GREEN / PRIORITY 3 Minor Injury or illness. Non-Emergency transport Ex: Sprains, strains, minor heat-related illness.
Nature of Injury or Illness & Mechanism of Injury	Brief Summary of Injury or Illness (Ex: Unconscious, Struck by Falling Tree)
Evacuation Request	Air Ambulance / Short Haul/Hoist Ground Ambulance / Other
Patient Location	Descriptive Location & Lat. / Long. (WGS84)
Incident Name	Geographic Name + Medical (Ex: Trout Meadow Medical)
On-Scene Incident Commander	Name of on-scene IC of Incident within an Incident (Ex: TFLD Jones)
Patient Care	Name of Care Provider (Ex: EMT Smith)

3. INITIAL PATIENT ASSESSMENT: Complete this section for each patient as applicable (start with the most severe patient)

Patient Assessment: See IRPG PAGE 106

Treatment:

4. EVACUATION PLAN:

Evacuation Location (if different): (Descriptive Location (drop point, intersection, etc.) or Lat. / Long.) Patient's ETA to Evacuation Location:

Helispot / Extraction Site Size and Hazards:

5. ADDITIONAL RESOURCES / EQUIPMENT NEEDS:

Example: Paramedic/EMT, crews, immobilization devices, AED, oxygen, trauma bag, IV/fluid(s), splints, rope rescue, wheeled litter, HAZMAT, extrication

6. COMMUNICATIONS: Identify State Air/Ground EMS Frequencies and Hospital Contacts as applicable

Function	Channel Name/Number	Receive (RX)	Tone/NAC *	Transmit (TX)	Tone/NAC *
COMMAND					
AIR-TO-GRND					
TACTICAL					

7. CONTINGENCY: Considerations: If primary options fail, what actions can be implemented in conjunction with primary evacuation method? Be thinking ahead..

8. ADDITIONAL INFORMATION: Updates/Changes, etc.

REMEMBER: Confirm ETAs of resources ordered. Act according to your level of training. Be Alert. Keep Calm. Think Clearly. Act Decisively.