

122°26.5'W 122°25'W 122°23.5'W 122°22'W 122°20.5'W 122°19'W 122°17.5'W 122°16'W 122°14.5'W 122°13'W 122°11.5'W 122°10'W 122°8.5'W 122°7'W 122°5.5'W 122°4'W

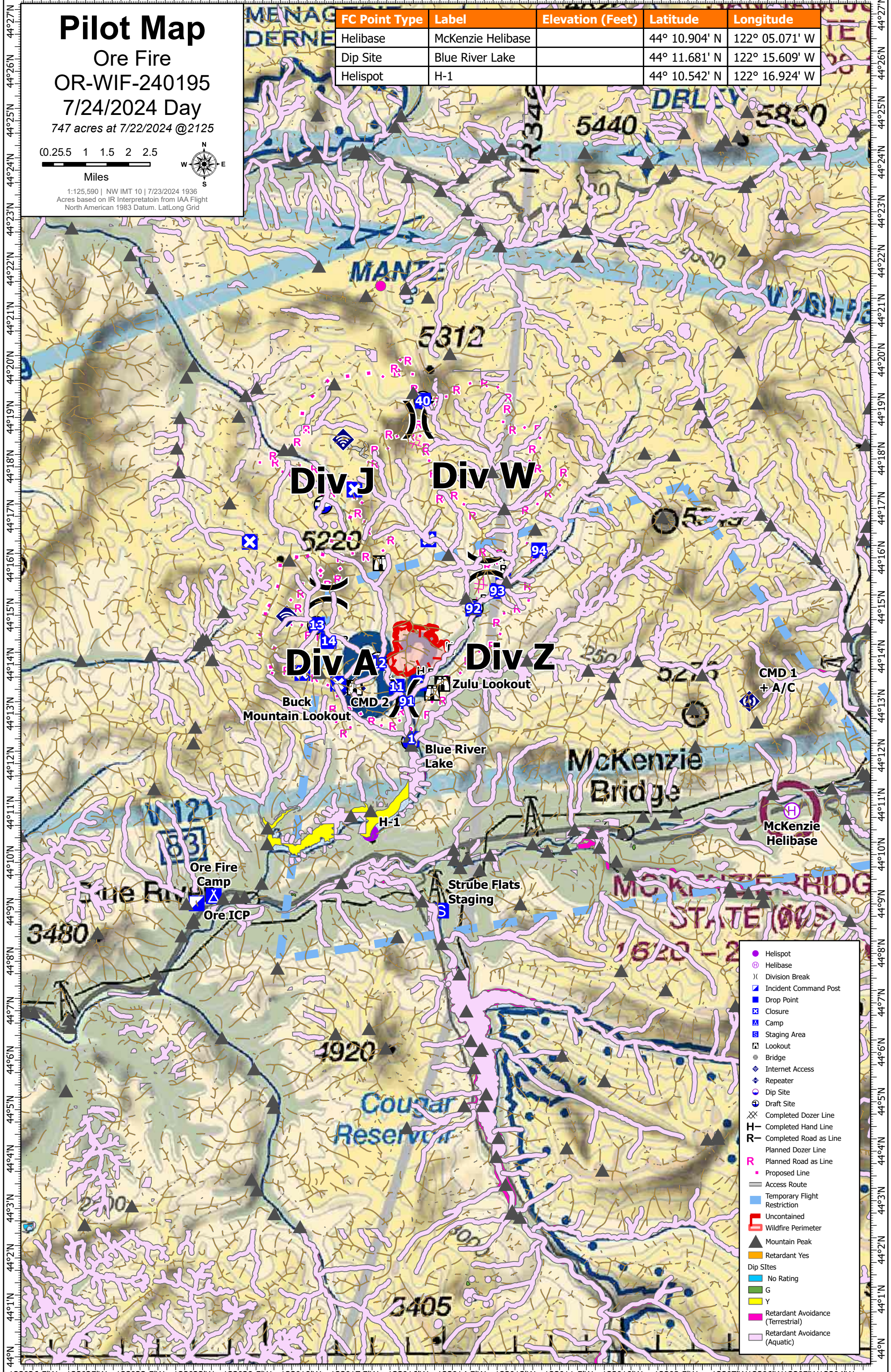
Pilot Map

Ore Fire
 OR-WIF-240195
 7/24/2024 Day
 747 acres at 7/22/2024 @2125

0.25.5 1 1.5 2 2.5
 Miles

1:125,590 | NW IMT 10 | 7/23/2024 1936
 Acres based on IR Interpretation from IAA Flight
 North American 1983 Datum. LatLong Grid

FC Point Type	Label	Elevation (Feet)	Latitude	Longitude
Helibase	McKenzie Helibase		44° 10.904' N	122° 05.071' W
Dip Site	Blue River Lake		44° 11.681' N	122° 15.609' W
Helispot	H-1		44° 10.542' N	122° 16.924' W



- Helispot
- ⊕ Helibase
- ⌘ Division Break
- ⊠ Incident Command Post
- ⊠ Drop Point
- ⊠ Closure
- ⊠ Camp
- ⊠ Staging Area
- ⊠ Lookout
- ⊠ Bridge
- ⊠ Internet Access
- ⊠ Repeater
- ⊠ Dip Site
- ⊠ Draft Site
- ⊠ Completed Dozer Line
- H Completed Hand Line
- R Completed Road as Line
- R Planned Dozer Line
- R Planned Road as Line
- Proposed Line
- Access Route
- Temporary Flight Restriction
- Uncontained
- Wildfire Perimeter
- ▲ Mountain Peak
- Retardant Yes
- Dip Sites
- No Rating
- G
- Y
- Retardant Avoidance (Terrestrial)
- Retardant Avoidance (Aquatic)

122°26.5'W 122°25'W 122°23.5'W 122°22'W 122°20.5'W 122°19'W 122°17.5'W 122°16'W 122°14.5'W 122°13'W 122°11.5'W 122°10'W 122°8.5'W 122°7'W 122°5.5'W 122°4'W