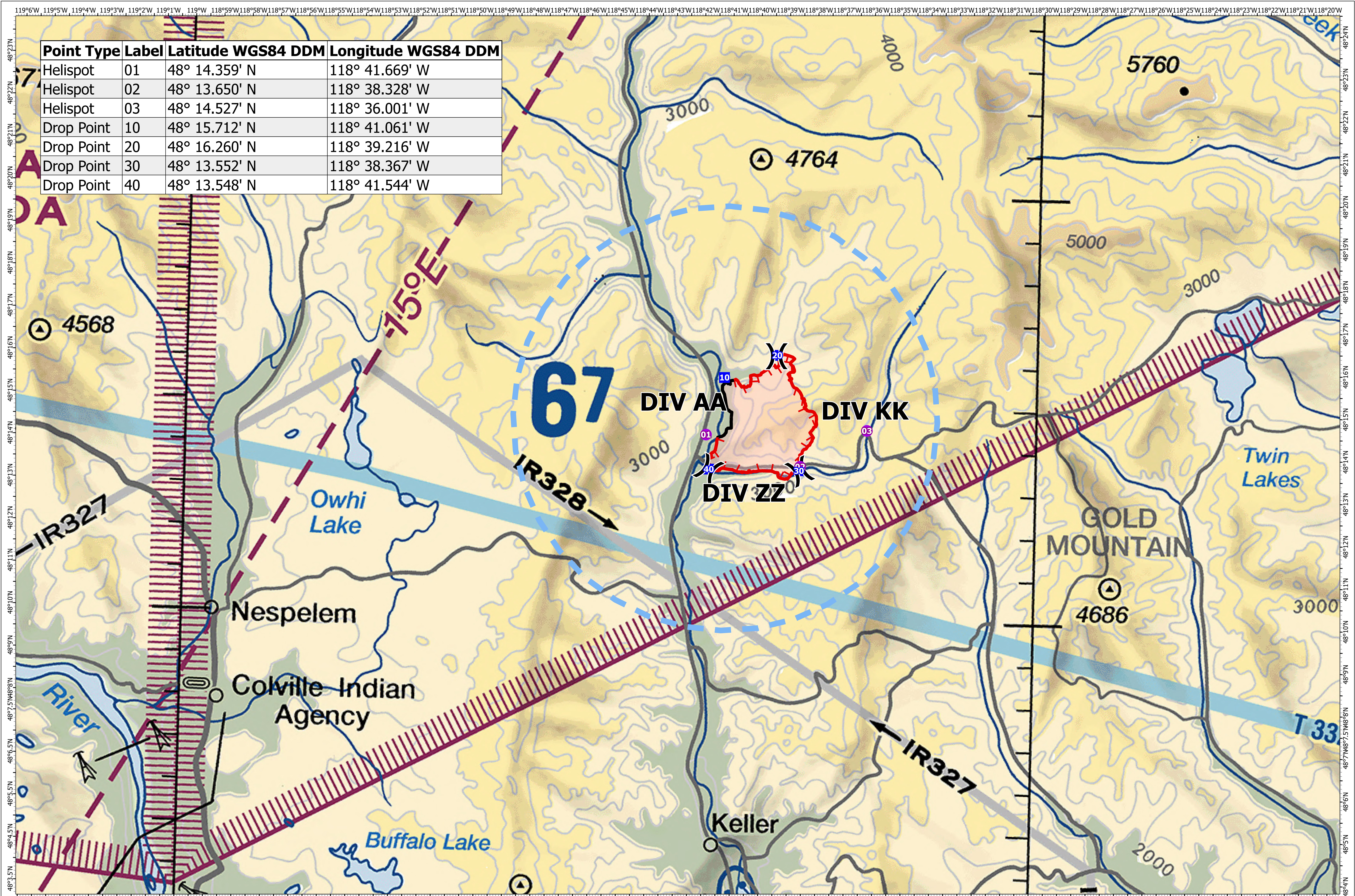


Point Type	Label	Latitude WGS84 DDM	Longitude WGS84 DDM
Helispot	01	48° 14.359' N	118° 41.669' W
Helispot	02	48° 13.650' N	118° 38.328' W
Helispot	03	48° 14.527' N	118° 36.001' W
Drop Point	10	48° 15.712' N	118° 41.061' W
Drop Point	20	48° 16.260' N	118° 39.216' W
Drop Point	30	48° 13.552' N	118° 38.367' W
Drop Point	40	48° 13.548' N	118° 41.544' W



Air Operations

Bridge Creek
WA-NES-240099
07/25/2024 24hr

3,864 acres at 7/23/2024 @ 2200

Wildfire Daily Fire Perimeter

Helispot

Contained

Division Break

Uncontained

Drop Point

