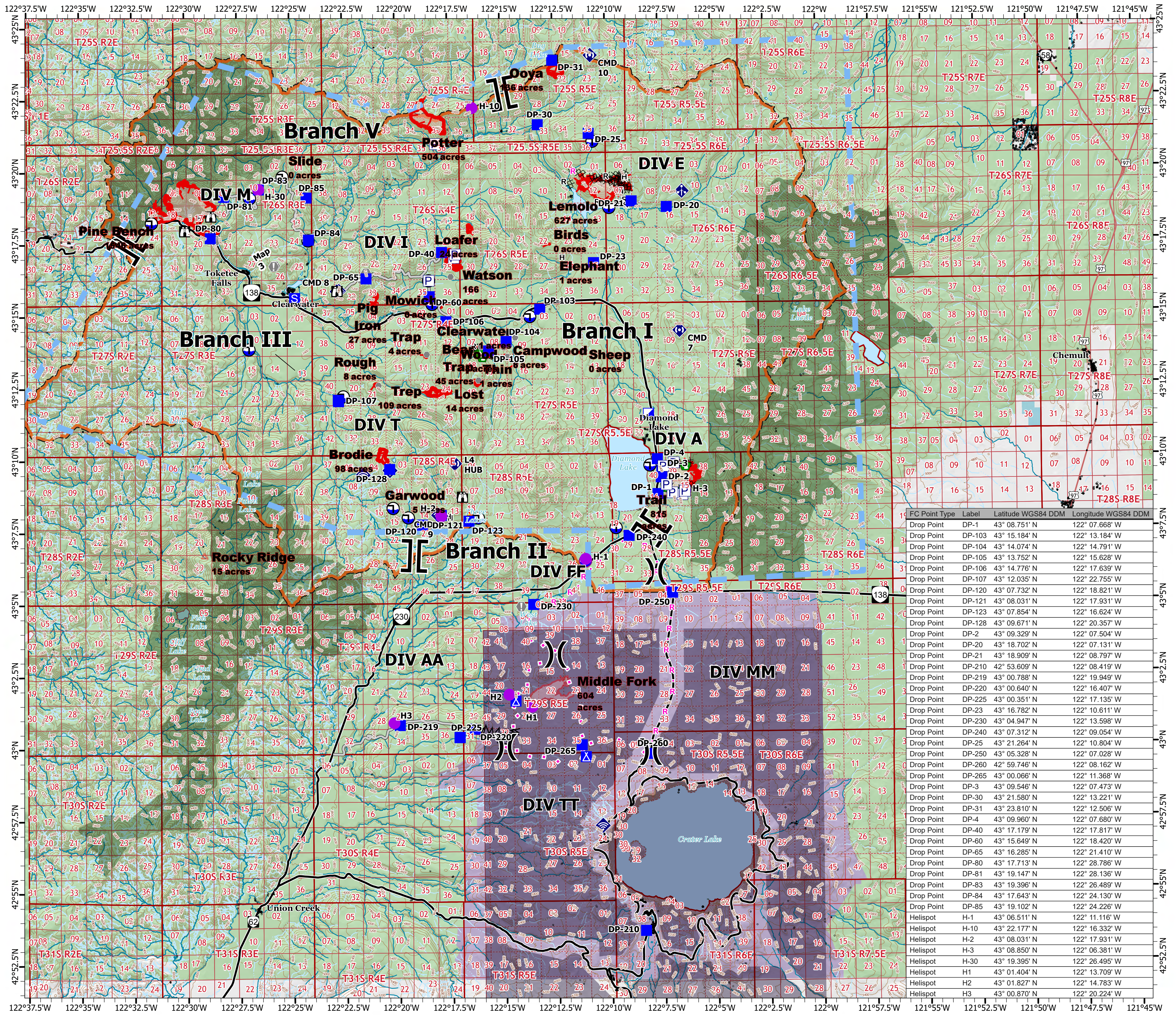
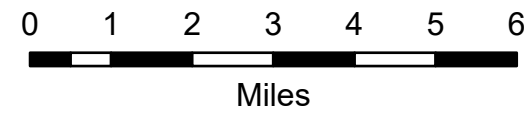
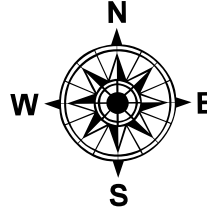


Air OPS Map

Diamond Complex & Middle Fork Fire OR-UPF-240303

4,162 acres at 07/24/2024 2002

- Helispot
- Division Break
- Branch Break
- Incident Command Post
- Drop Point
- Camp
- Staging Area
- Lookout
- Value at Risk
- Other
- Gate
- Repair Point
- Dozer Push
- Mobile Weather Unit
- Internet Access
- Repeater
- Hazard
- Dip Site
- Draft Site
- Pump
- Completed Dozer Line
- Completed Fuel Break
- Completed Hand Line
- Completed Road as Line
- Planned Road as Line
- Proposed Line
- Access Route
- Other
- Temporary Flight Restriction
- Contained
- Uncontained
- Wildfire Daily Fire Perimeter
- Structures
- Diamond Lake Ranger District
- NPS Wilderness
- USFS Wilderness
- National Park Service (NPS)
- State
- US Fish and Wildlife Service (USFWS)
- US Forest Service (USFS)



FC Point Type	Label	Latitude WGS84 DDM	Longitude WGS84 DDM
Drop Point	DP-1	43° 08.751' N	122° 07.668' W
Drop Point	DP-103	43° 15.184' N	122° 13.184' W
Drop Point	DP-104	43° 14.074' N	122° 14.791' W
Drop Point	DP-105	43° 13.752' N	122° 15.628' W
Drop Point	DP-106	43° 14.776' N	122° 17.639' W
Drop Point	DP-107	43° 12.035' N	122° 22.755' W
Drop Point	DP-120	43° 07.732' N	122° 18.821' W
Drop Point	DP-121	43° 08.031' N	122° 17.931' W
Drop Point	DP-123	43° 07.854' N	122° 16.624' W
Drop Point	DP-128	43° 09.671' N	122° 20.357' W
Drop Point	DP-2	43° 09.329' N	122° 07.504' W
Drop Point	DP-20	43° 18.702' N	122° 07.131' W
Drop Point	DP-21	43° 18.909' N	122° 08.797' W
Drop Point	DP-210	42° 53.609' N	122° 08.419' W
Drop Point	DP-219	43° 00.788' N	122° 19.949' W
Drop Point	DP-220	43° 00.640' N	122° 16.407' W
Drop Point	DP-225	43° 00.351' N	122° 17.135' W
Drop Point	DP-23	43° 16.782' N	122° 10.611' W
Drop Point	DP-230	43° 04.947' N	122° 13.598' W
Drop Point	DP-240	43° 07.312' N	122° 09.054' W
Drop Point	DP-25	43° 21.264' N	122° 10.804' W
Drop Point	DP-250	43° 05.328' N	122° 07.028' W
Drop Point	DP-260	42° 59.746' N	122° 08.162' W
Drop Point	DP-265	43° 00.066' N	122° 11.368' W
Drop Point	DP-3	43° 09.546' N	122° 07.473' W
Drop Point	DP-30	43° 21.580' N	122° 13.221' W
Drop Point	DP-31	43° 23.810' N	122° 12.506' W
Drop Point	DP-4	43° 09.960' N	122° 07.680' W
Drop Point	DP-40	43° 17.179' N	122° 17.817' W
Drop Point	DP-60	43° 15.649' N	122° 18.420' W
Drop Point	DP-65	43° 16.285' N	122° 21.410' W
Drop Point	DP-80	43° 17.713' N	122° 28.786' W
Drop Point	DP-81	43° 19.147' N	122° 28.136' W
Drop Point	DP-83	43° 19.396' N	122° 26.489' W
Drop Point	DP-84	43° 17.643' N	122° 24.130' W
Drop Point	DP-85	43° 19.102' N	122° 24.226' W
Helispot	H-1	43° 06.511' N	122° 11.116' W
Helispot	H-10	43° 22.177' N	122° 16.332' W
Helispot	H-2	43° 08.031' N	122° 17.931' W
Helispot	H-3	43° 08.850' N	122° 06.381' W
Helispot	H-30	43° 19.395' N	122° 26.495' W
Helispot	H1	43° 01.404' N	122° 13.709' W
Helispot	H2	43° 01.827' N	122° 14.783' W
Helispot	H3	43° 00.870' N	122° 20.224' W