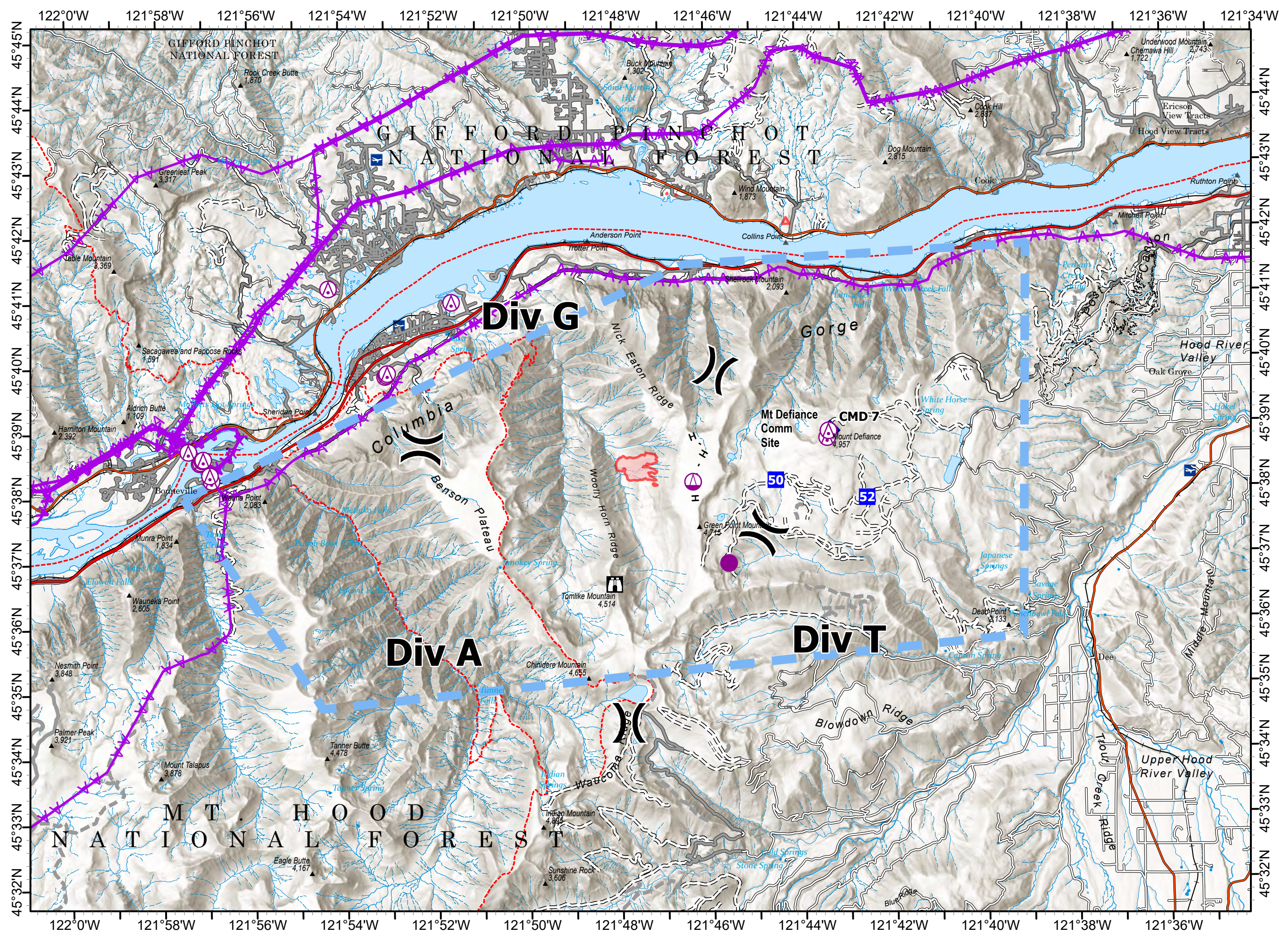
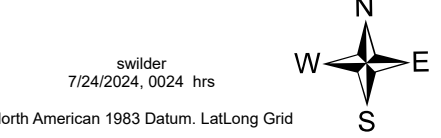
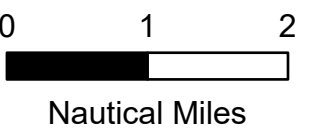


Air Ops
 Whisky Creek
 OR-MHF-000639
 07/24/2024
 155 acres
 at 07/22/2024 1258 Hrs



- Aerial Hazard
- Helispot
- Sling Site
- Division Break
- Drop Point
- Lookout
- Repeater
- H - Completed Hand Line
- Aerial Hazard
- Temporary Flight Restriction
- Wildfire Daily Fire Perimeter



swilder
 7/24/2024, 0024 hrs
 North American 1983 Datum. Lat/Long Grid

FC Point Type	Label	Comments	Latitude WGS84 DDM	Longitude WGS84 DDM
Drop Point	52		45° 37.892' N	121° 42.545' W
Drop Point	50		45° 38.175' N	121° 44.537' W
Hellspot	10		45° 36.908' N	121° 45.588' W
Lookout		Can see right flank of fire and upper extent,	45° 36.605' N	121° 48.095' W
Division Break		DIV O-T Break	45° 37.659' N	121° 45.903' W
Division Break		DIV T-A Break		
Division Break		DIV A-G Break		
Division Break		Div G-O Break		
Repeater	CMD 7		45° 38.922' N	121° 43.338' W
Sling Site			45° 38.163' N	121° 46.348' W
Incident Command Post		Hood River High School	45° 41.089' N	121° 32.774' W
Aerial Hazard			45° 40.964' N	121° 51.587' W
Aerial Hazard			45° 38.538' N	121° 57.138' W
Aerial Hazard			45° 38.717' N	121° 57.383' W
Aerial Hazard			45° 38.572' N	121° 57.095' W
Aerial Hazard			45° 39.840' N	121° 53.055' W
Aerial Hazard			45° 39.859' N	121° 53.025' W
Aerial Hazard			45° 38.554' N	121° 57.112' W
Aerial Hazard			45° 41.195' N	121° 54.277' W
Aerial Hazard			45° 39.883' N	121° 53.008' W
Aerial Hazard			45° 38.267' N	121° 56.883' W
Aerial Hazard			45° 38.817' N	121° 43.400' W
Aerial Hazard			45° 38.583' N	121° 57.081' W
Aerial Hazard			45° 38.920' N	121° 43.368' W
Aerial Hazard			45° 38.350' N	121° 56.917' W
Aerial Hazard			45° 38.594' N	121° 57.060' W