

Operations

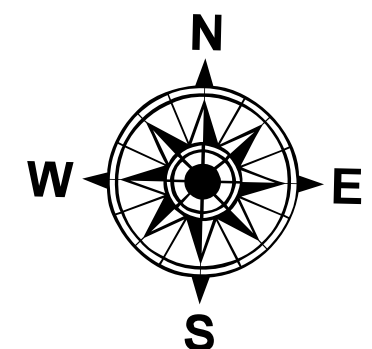
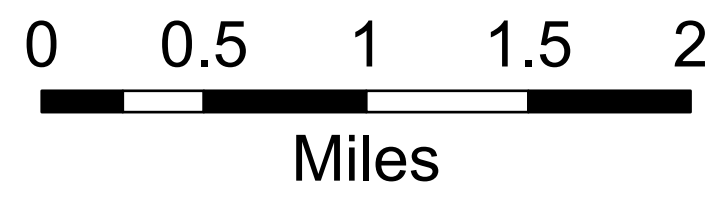
Swawilla I

WACO-240089

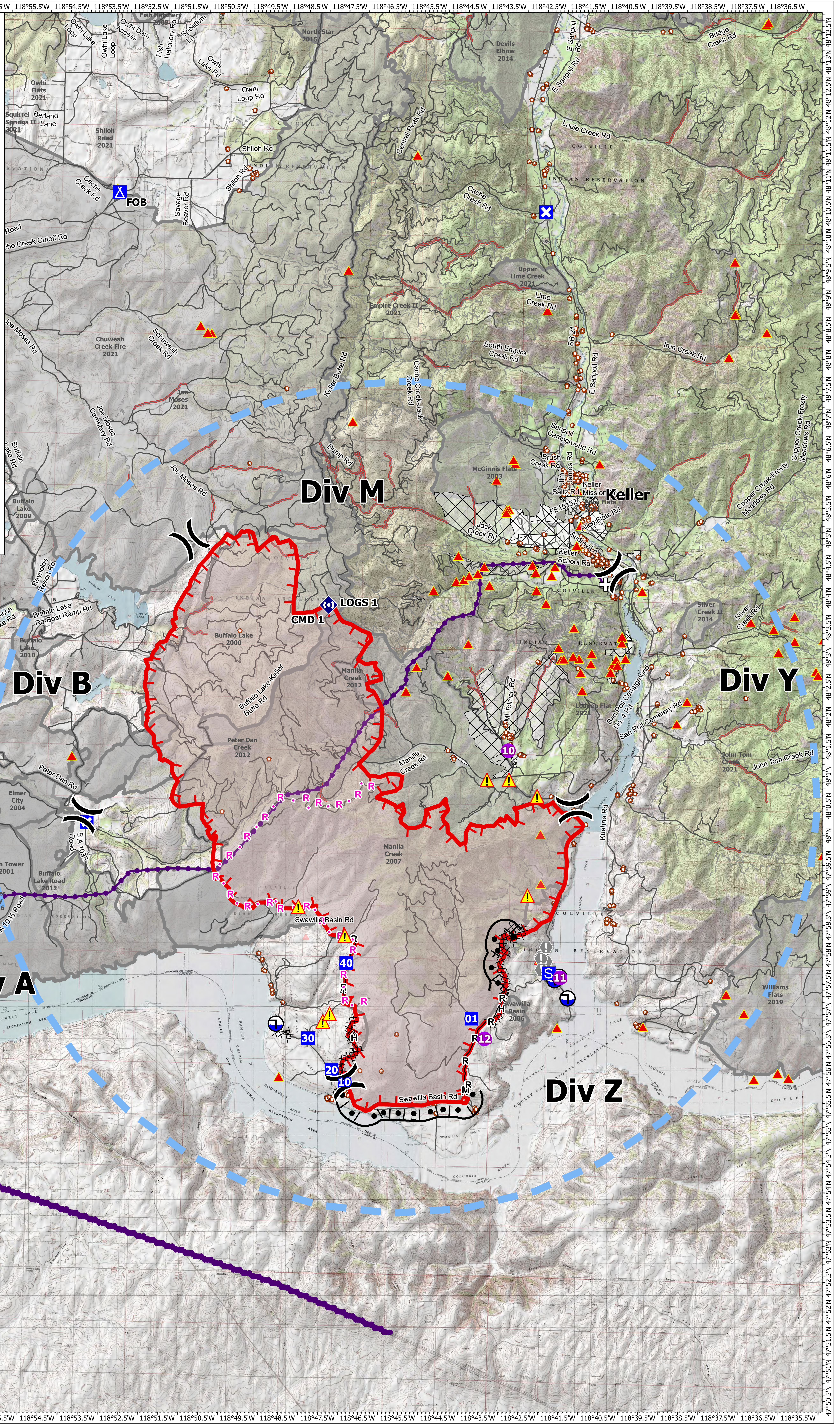
7/25/2024

26822 acres at 7/24/2024 2232

1:37,500 | kkskie | 7/24/2024 2018
Acres from IR and GPS
North American 1983 Datum. Lat/Long Grid



- Structures
- Electric Substations
- Helispot
- Helibase
- Division Break
- Incident Command Post
- Drop Point
- Closure
- Camp
- Staging Area
- Value at Risk
- Other
- Repeater
- Hazard
- Draft Site
- Transmission Lines
 - Completed Burnout
 - Completed Dozer Line
 - Completed Hand Line
 - Completed Mixed Construction Line
- R
 - Completed Road as Line
 - Planned Road as Line
 - Temporary Flight Restriction
- Uncontained
- Wildfire Daily Fire Perimeter
- History Fire Perimeters
- MTFC Past Fuels Treatments
- Driveable
- Restored Road (Permanent Action)
- Unknown Status
- Mine



Div B

Div M

Div Y

Div A

Div Z

CMD 1

LOGS 1

Keller

Swawilla Basin

Swawilla Basin

Swawilla Basin

Swawilla Basin

Swawilla Basin

Swawilla Basin

Swawilla Basin

Swawilla Basin

Swawilla Basin

Swawilla Basin

Swawilla Basin

Swawilla Basin

Swawilla Basin

Swawilla Basin

Swawilla Basin

Swawilla Basin

Swawilla Basin

Swawilla Basin

Swawilla Basin

Swawilla Basin

Swawilla Basin

Swawilla Basin

Swawilla Basin

Swawilla Basin

Swawilla Basin

Swawilla Basin

Swawilla Basin

Swawilla Basin

Swawilla Basin

Swawilla Basin

Swawilla Basin