

# Operations

07/24/2024

Durkee

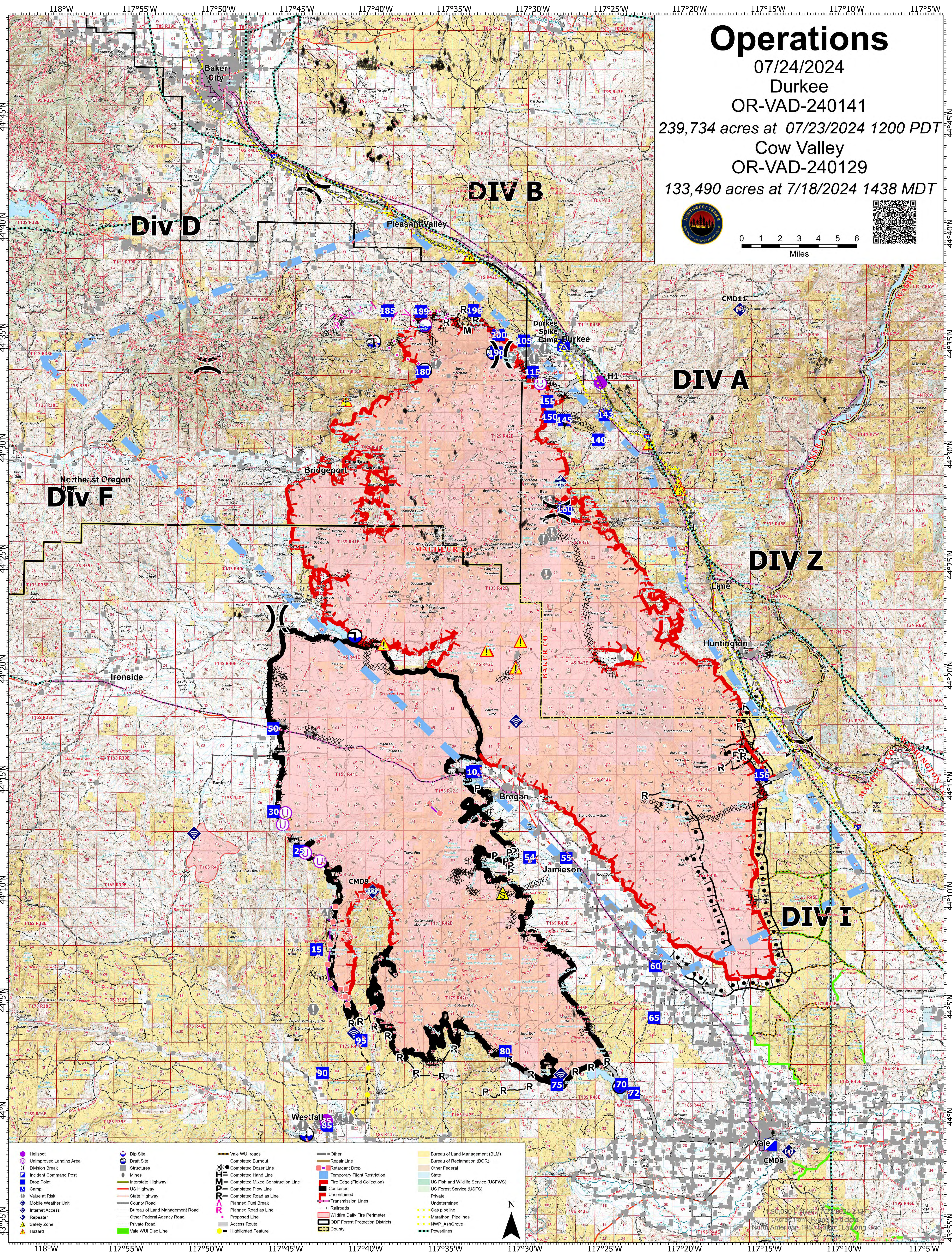
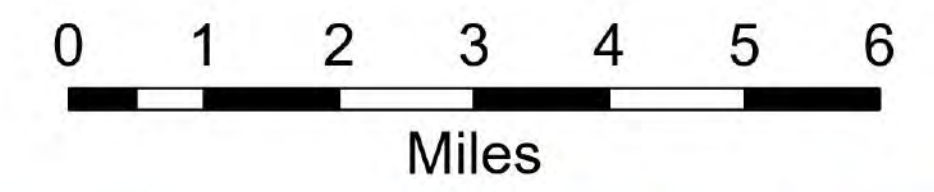
OR-VAD-240141

239,734 acres at 07/23/2024 1200 PDT

Cow Valley

OR-VAD-240129

133,490 acres at 7/18/2024 1438 MDT



- |   |   |   |  |  |
|---|---|---|--|--|
| <ul style="list-style-type: none"><li>Helispot</li><li>Unimproved Landing Area</li><li>Division Break</li><li>Incident Command Post</li><li>Drop Point</li><li>Camp</li><li>Value at Risk</li><li>Mobile Weather Unit</li><li>Internet Access</li><li>Repeater</li><li>Safety Zone</li><li>Hazard</li></ul> | <ul style="list-style-type: none"><li>Dip Site</li><li>Draft Site</li><li>Structures</li><li>Interstate Highway</li><li>US Highway</li><li>State Highway</li><li>County Road</li><li>Bureau of Land Management Road</li><li>Other Federal Agency Road</li><li>Private Road</li><li>Vale WUI Disc Line</li></ul> | <ul style="list-style-type: none"><li>Vale WUI roads</li><li>Completed Burnout</li><li>Completed Dozer Line</li><li>Completed Hand Line</li><li>Completed Mixed Construction Line</li><li>Completed PLOW Line</li><li>Completed Road as Line</li><li>Planned Fuel Break</li><li>Planned Road as Line</li><li>Proposed Line</li><li>Access Route</li><li>Highlighted Feature</li></ul> | <ul style="list-style-type: none"><li>Other</li><li>Repair Line</li><li>Retardant Drop</li><li>Temporary Flight Restriction</li><li>Fire Edge (Field Collection)</li><li>Contained</li><li>Uncontained</li><li>Transmission Lines</li><li>Railroads</li><li>Wildfire Daily Fire Perimeter</li><li>ODF Forest Protection Districts</li><li>County</li></ul> | <ul style="list-style-type: none"><li>Bureau of Land Management (BLM)</li><li>Bureau of Reclamation (BOR)</li><li>Other Federal</li><li>State</li><li>US Fish and Wildlife Service (USFWS)</li><li>US Forest Service (USFS)</li><li>Private</li><li>Undetermined</li><li>Gas pipeline</li><li>Marathon Pipelines</li><li>NWP_AshGrove</li><li>Powerlines</li></ul> |
|---|---|---|--|--|



1:90,000 FWS 7/23/2024 213  
Acres from IR and field data  
North American 1983 datum, Lat Long Grid