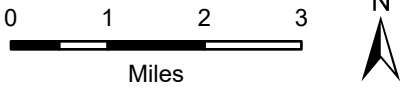


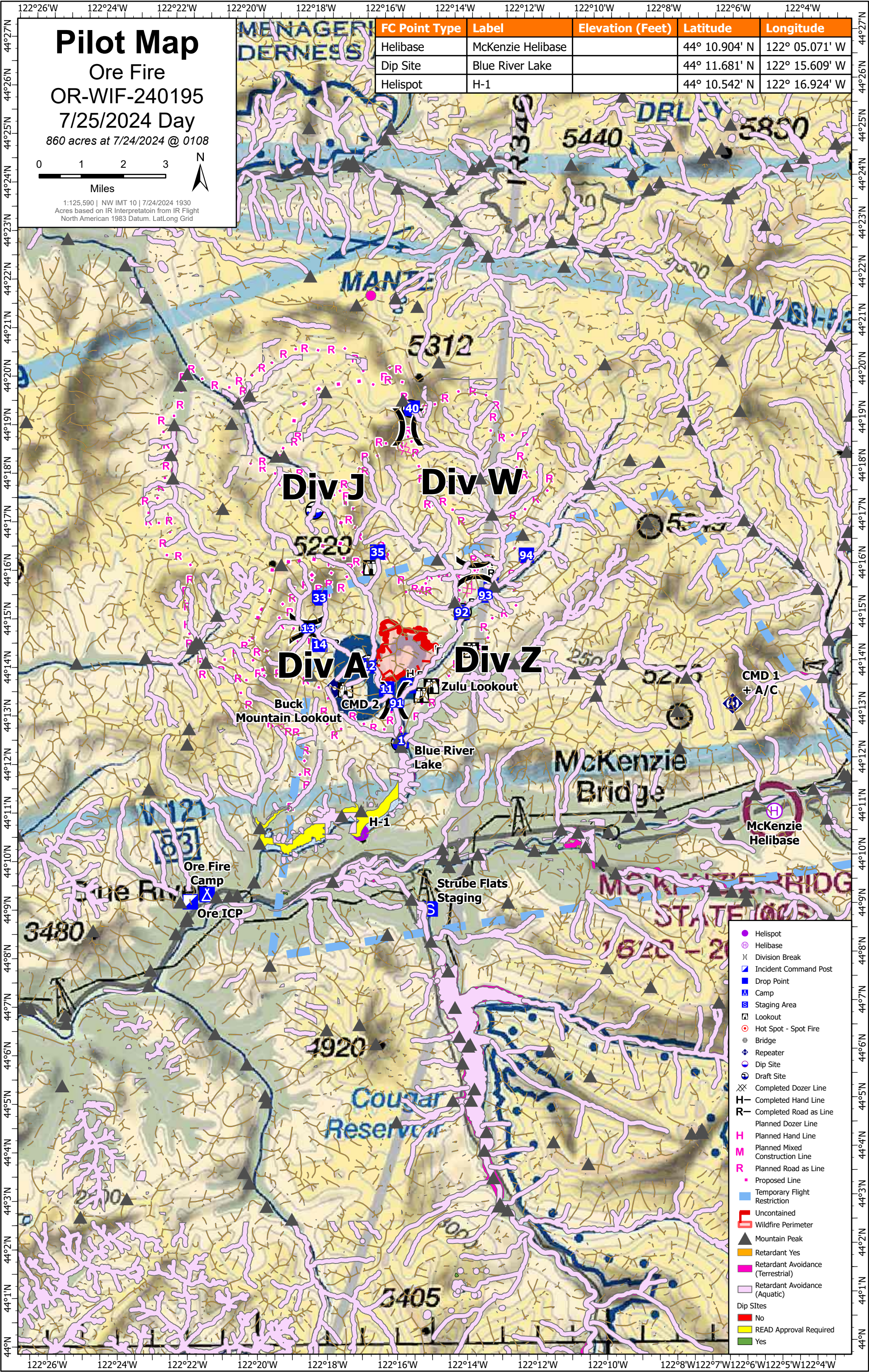
Pilot Map

Ore Fire
OR-WIF-240195
7/25/2024 Day
860 acres at 7/24/2024 @ 0108



1:125,590 | NW IMT 10 | 7/24/2024 1930
Acres based on IR Interpretation from IR Flight
North American 1983 Datum, Lat/Long Grid

FC Point Type	Label	Elevation (Feet)	Latitude	Longitude
Helibase	McKenzie Helibase		44° 10.904' N	122° 05.071' W
Dip Site	Blue River Lake		44° 11.681' N	122° 15.609' W
Helispot	H-1		44° 10.542' N	122° 16.924' W



- Helispot
- ⊕ Helibase
- ⌵ Division Break
- ⌵ Incident Command Post
- Drop Point
- ⌵ Camp
- ⌵ Staging Area
- ⌵ Lookout
- ⊙ Hot Spot - Spot Fire
- Bridge
- ⌵ Repeater
- ⌵ Dip Site
- ⌵ Draft Site
- ⌵ Completed Dozer Line
- ⌵ Completed Hand Line
- ⌵ Completed Road as Line
- ⌵ Planned Dozer Line
- ⌵ Planned Hand Line
- ⌵ Planned Mixed Construction Line
- ⌵ Planned Road as Line
- ⌵ Proposed Line
- ⌵ Temporary Flight Restriction
- ⌵ Uncontained
- ⌵ Wildfire Perimeter
- ▲ Mountain Peak
- Retardant Yes
- Retardant Avoidance (Terrestrial)
- Retardant Avoidance (Aquatic)
- Dip Sites
- READ Approval Required
- Yes