

# Pilot

Falls

ORMAF-002502

7/25/2024 Day

140,422 acres on 7/23/2024 @ 2115 PDT

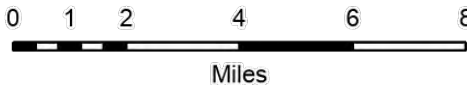
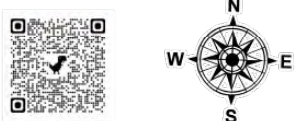
Telephone

ORMAF-002523

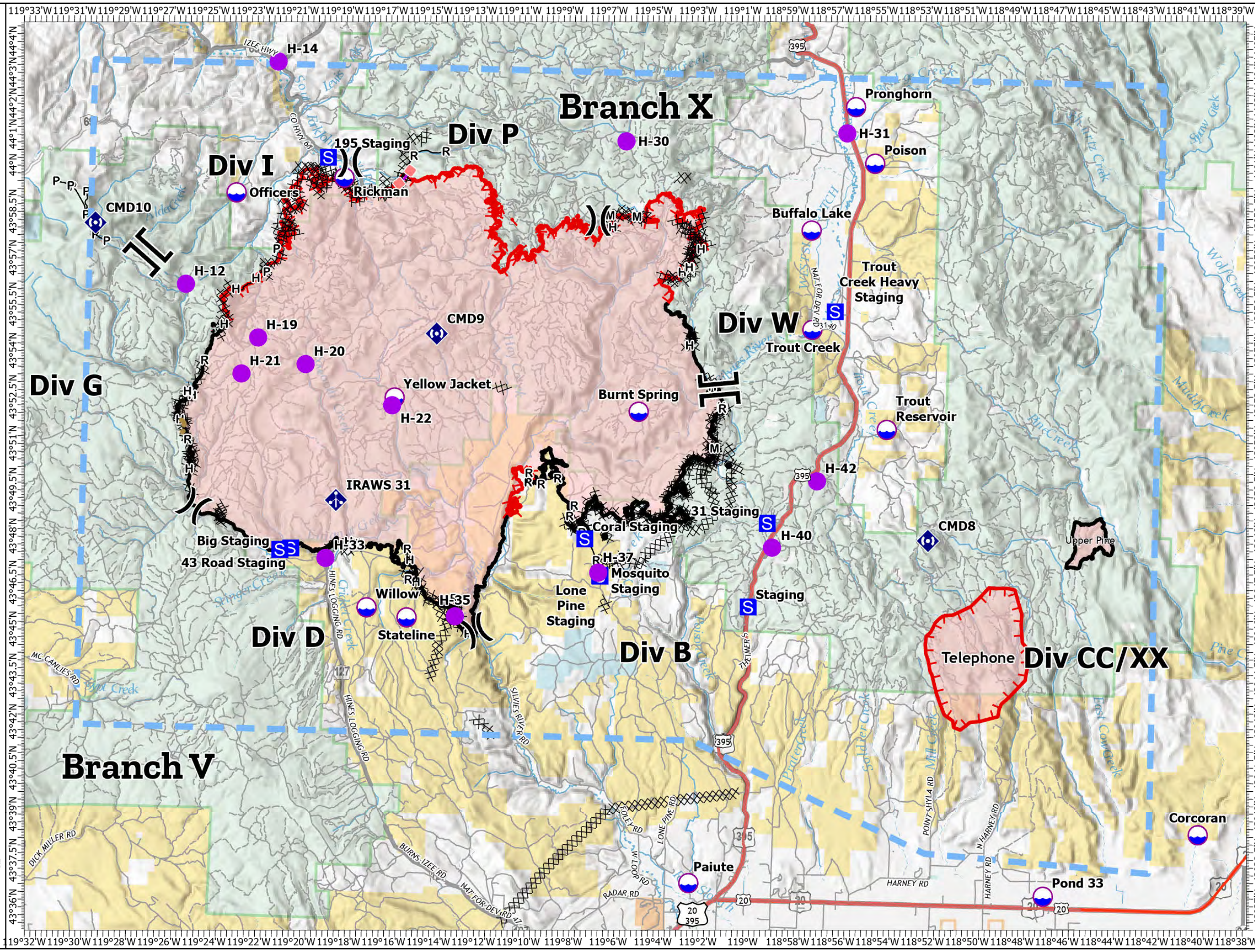
7/25/2024 Day

9,000 acres on 7/24/2024 @ 0512 PDT

- Helispot
- ⌵ Division Break
- ⌵ Branch Break
- Ⓢ Staging Area
- Ⓜ Mobile Weather Unit
- Ⓜ Repeater
- Ⓜ Dip Site
- ⌵ Completed Dozer Line
- ⌵ Completed Hand Line
- ⌵ Completed Mixed Construction Line
- ⌵ Completed Plow Line
- ⌵ Completed Road as Line
- ⌵ Road Repair
- ⌵ Retardant Drop
- ⌵ Temporary Flight Restriction
- ⌵ Contained
- ⌵ Uncontained



1:215,000 | NW8 | 7/24/2024 2024  
Acres from IR  
North American 1983 Datum. Lat/Long Grid





<b>Incident Name</b>	<b>FC Point Type</b>	<b>Label</b>	<b>Latitude WGS84 DDM</b>	<b>Longitude WGS84 DDM</b>
Falls	Dip Site	Willow	43° 46.030' N	119° 17.161' W
Falls	Dip Site	Stateline	43° 45.740' N	119° 15.361' W
Falls	Dip Site	Yellow Jacket	43° 52.840' N	119° 16.161' W
Falls	Dip Site	Pronghorn	44° 02.610' N	118° 55.811' W
Falls	Dip Site	Poison	44° 00.793' N	118° 54.893' W
Falls	Dip Site	Buffalo Lake	43° 58.583' N	118° 57.673' W
Falls	Dip Site	Trout Creek	43° 55.372' N	118° 57.536' W
Falls	Dip Site	Trout Reservoir	43° 52.192' N	118° 54.101' W
Falls	Dip Site	Officers	43° 59.328' N	119° 23.499' W
Falls	Dip Site	Burnt Spring	43° 52.587' N	119° 05.221' W
Falls	Dip Site	Paiute	43° 37.368' N	119° 02.482' W
Falls	Dip Site	Rickman	43° 59.902' N	119° 18.684' W
Falls	Dip Site	Pond 33	43° 37.187' N	118° 46.669' W
Falls	Dip Site	Corcoran	43° 39.283' N	118° 39.818' W
Falls	Helibase	Burns Municipal Airport	43° 35.510' N	118° 57.321' W
Falls	Helispot	H-21	43° 53.478' N	119° 23.045' W
Falls	Helispot	H-33	43° 47.591' N	119° 19.055' W
Falls	Helispot	H-19	43° 54.656' N	119° 22.345' W
Falls	Helispot	H-20	43° 53.840' N	119° 20.188' W
Falls	Helispot	H-40	43° 48.298' N	118° 59.109' W
Falls	Helispot	H-22	43° 52.588' N	119° 16.264' W
Falls	Helispot	H-37	43° 47.350' N	119° 06.851' W
Falls	Helispot	H-14	44° 03.600' N	119° 21.781' W
Falls	Helispot	H-42	43° 50.478' N	118° 57.167' W
Falls	Helispot	H-35	43° 45.819' N	119° 13.202' W
Falls	Helispot	H-15	44° 08.663' N	118° 58.307' W
Falls	Helispot	H-28	44° 05.375' N	119° 10.840' W
Falls	Helispot	H-30	44° 01.322' N	119° 06.075' W
Falls	Helispot	H-12	43° 56.325' N	119° 25.648' W
Falls	Helispot	H-31	44° 01.752' N	118° 56.176' W