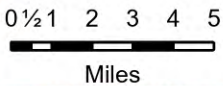


Pilot Durkee

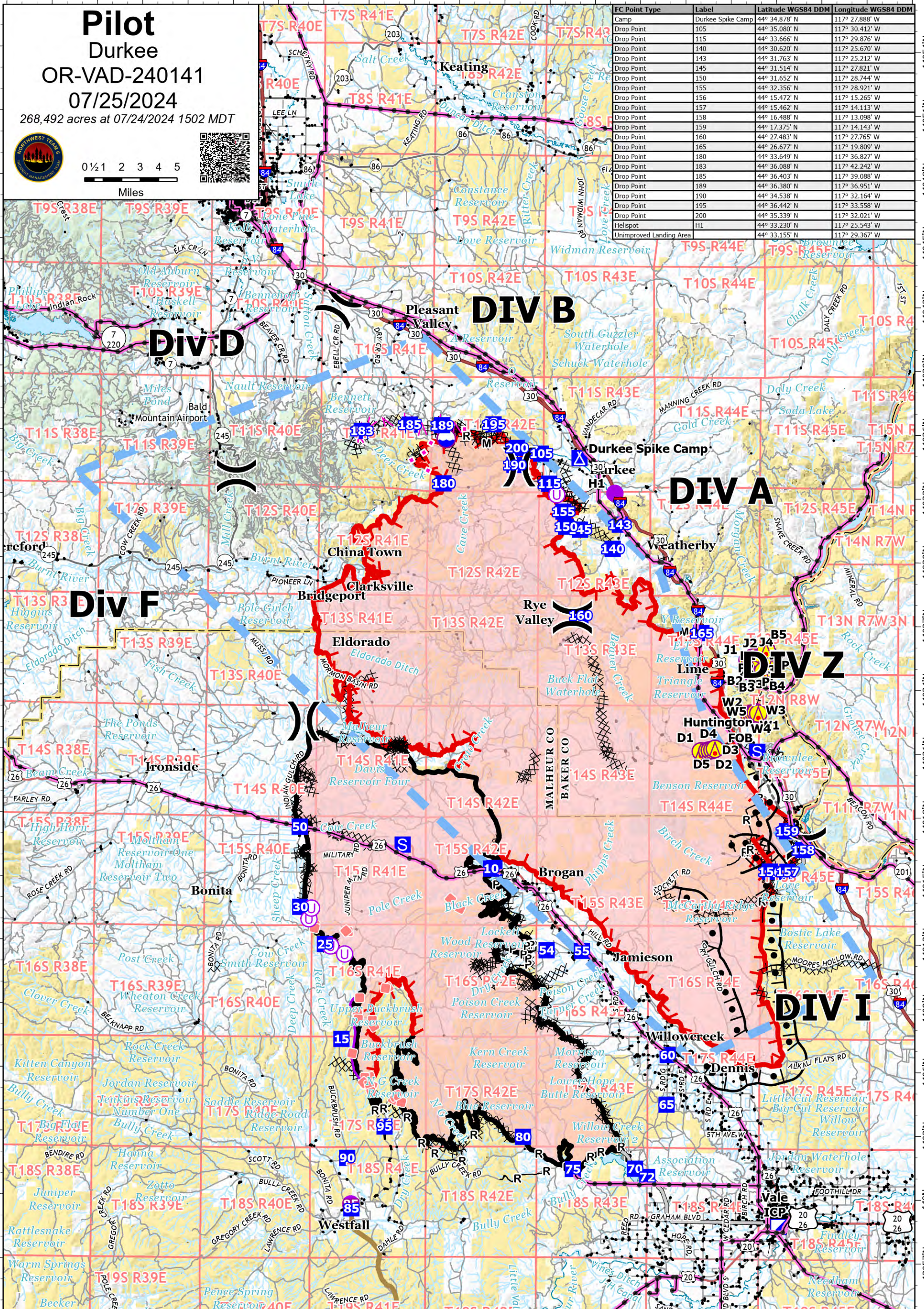
OR-VAD-240141

07/25/2024

268,492 acres at 07/24/2024 1502 MDT



FC Point Type	Label	Latitude WGS84 DDM	Longitude WGS84 DDM
Camp	Durkee Spike Camp	44° 34.878' N	117° 27.888' W
Drop Point	105	44° 35.080' N	117° 30.412' W
Drop Point	115	44° 33.666' N	117° 29.876' W
Drop Point	140	44° 30.620' N	117° 25.670' W
Drop Point	143	44° 31.763' N	117° 25.212' W
Drop Point	145	44° 31.514' N	117° 27.821' W
Drop Point	150	44° 31.652' N	117° 28.744' W
Drop Point	155	44° 32.356' N	117° 28.921' W
Drop Point	156	44° 15.472' N	117° 15.265' W
Drop Point	157	44° 15.462' N	117° 14.113' W
Drop Point	158	44° 16.488' N	117° 13.098' W
Drop Point	159	44° 17.375' N	117° 14.143' W
Drop Point	160	44° 27.483' N	117° 27.765' W
Drop Point	165	44° 26.677' N	117° 19.809' W
Drop Point	180	44° 33.649' N	117° 36.827' W
Drop Point	183	44° 36.088' N	117° 42.242' W
Drop Point	185	44° 36.403' N	117° 39.088' W
Drop Point	189	44° 36.380' N	117° 36.951' W
Drop Point	190	44° 34.538' N	117° 32.164' W
Drop Point	195	44° 36.442' N	117° 33.558' W
Drop Point	200	44° 35.339' N	117° 32.021' W
Helispot	H1	44° 33.230' N	117° 25.543' W
Unimproved Landing Area		44° 33.155' N	117° 29.367' W



Wildfire Daily Fire Perimeter	Completed Hand Line	Completed Road as Line	Access Route	Temporary Flight Restriction	Unimproved Landing Area	Camp
Completed Burnout	Completed Mixed Construction Line	Planned Fuel Break	Highlighted Feature	Fire Edge (Field Collection)	Staging Area	Dip Site
Completed Dozer Line	Completed Plow Line	Planned Road as Line	Other	Aerial Hazard	Incident Command Post	Electric Transmission Lines
		Proposed Line	Repair Line	Helispot		
			Retardant Drop			