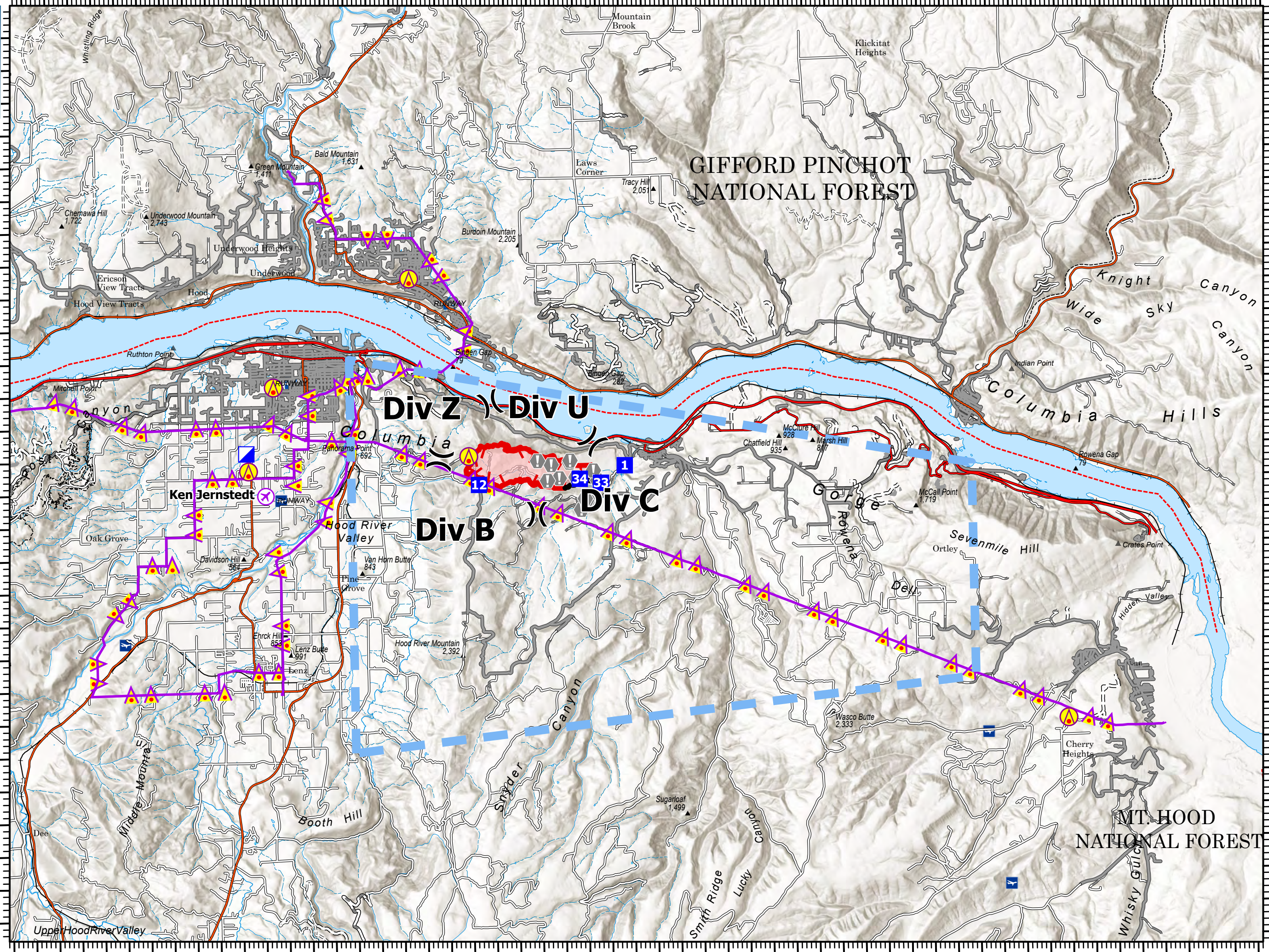


Air Operations

Microwave Tower
OR-954S-000661
07/25/2024
704 acres
at 07/24/2024 0041 Hrs

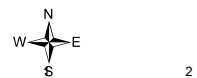


- Aerial Hazard
- Airstrip or Airport
- Division Break
- Incident Command Post
- Drop Point
- Value at Risk
- Aerial Hazard
- Temporary Flight Restriction
- Contained
- Uncontained
- Wildfire Daily Fire Perimeter



GIFFORD PINCHOT NATIONAL FOREST

MT. HOOD NATIONAL FOREST



Matthew Hoffman
7/24/2024 0041 Hrs
Aerial from IR
North American 1983 Datum, Lat/Long GCS

Incident Name	FC Point Type	Label	Comments	Latitude WGS84 DDM	Longitude WGS84 DDM
Microwave Tower	Airstrip or Airport	Ken Jernstedt		45° 40.440' N	121° 32.364' W
Microwave Tower	Drop Point	1	DP-1	45° 40.815' N	121° 24.548' W
Microwave Tower	Drop Point	12		45° 40.558' N	121° 27.725' W
Microwave Tower	Drop Point	33	Drop point 33	45° 40.555' N	121° 25.071' W
Microwave Tower	Drop Point	34	DP 34	45° 40.622' N	121° 25.531' W
Microwave Tower	Helibase	Columbia Gorge		45° 36.812' N	121° 10.120' W