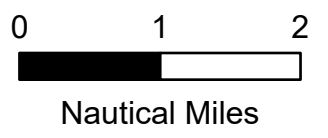
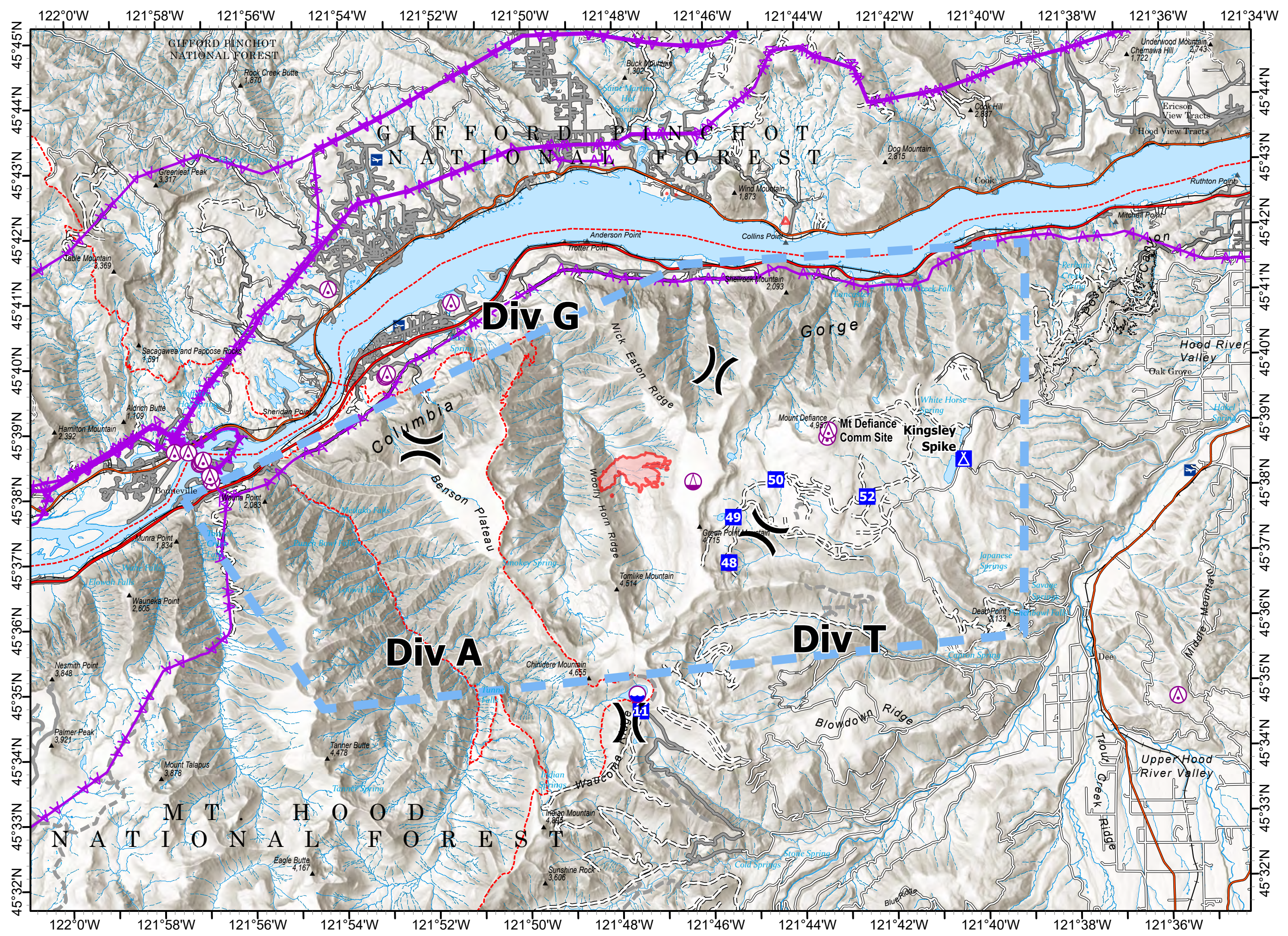


**Air Ops**  
 Whisky Creek  
 OR-MHF-000639  
 07/25/2024  
 288 acres  
 at 07/24/2024 0041 Hrs



- Aerial Hazard
- Dip Site
- Helispot
- Sling Site
- Division Break
- Drop Point
- Camp
- Aerial Hazard
- Temporary Flight Restriction
- Wildfire Daily Fire Perimeter



Matthew Hoffman  
 7/24/2024, 1548 hrs  
 Acres from IR  
 North American 1983 Datum. Lat/Long Grid

Incident Name	FC Point Type	Label	Comments	Latitude WGS84 DDM	Longitude WGS84 DDM
Whisky Creek	Airstrip or Airport			45° 40.365' N	121° 32.051' W
Whisky Creek	Airstrip or Airport	Ken Jernstedt		45° 40.440' N	121° 32.364' W
Whisky Creek	Drop Point	11	DP 11	45° 34.651' N	121° 47.565' W
Whisky Creek	Drop Point	48	DP 48	45° 36.911' N	121° 45.587' W
Whisky Creek	Drop Point	49	DP 49	45° 37.608' N	121° 45.480' W
Whisky Creek	Drop Point	50	DP-50	45° 38.175' N	121° 44.537' W
Whisky Creek	Drop Point	52	DP-52	45° 37.892' N	121° 42.545' W
Whisky Creek	Helibase	Columbia Gorge		45° 36.812' N	121° 10.120' W
Whisky Creek	Helispot	10	H-10	45° 36.908' N	121° 45.588' W
Whisky Creek	Incident Command Post		Hood River High School	45° 41.089' N	121° 32.774' W