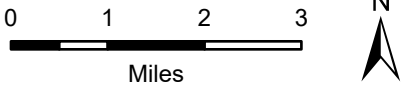


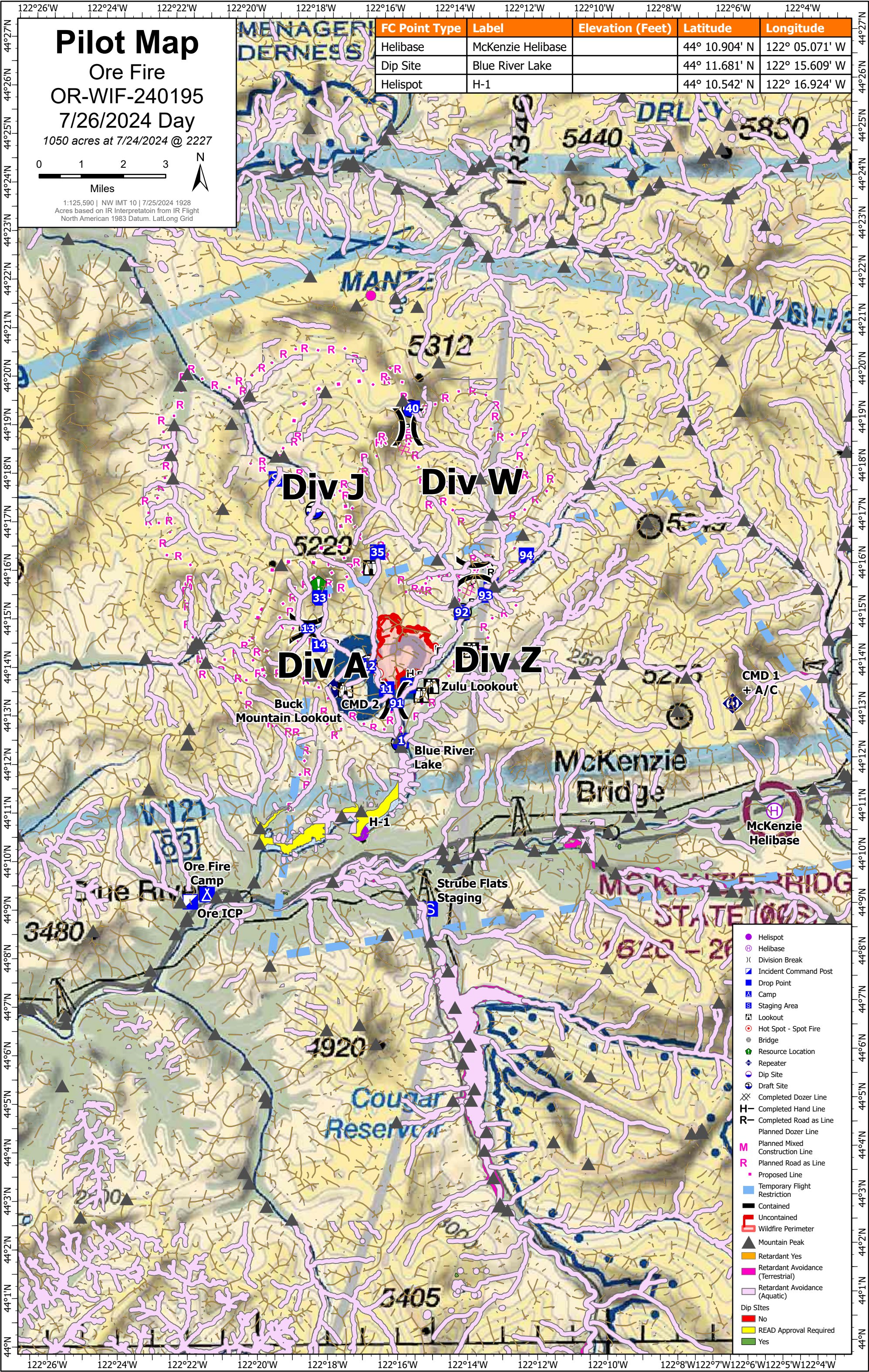
Pilot Map

Ore Fire
OR-WIF-240195
7/26/2024 Day
1050 acres at 7/24/2024 @ 2227



1:125,590 | NW IMT 10 | 7/25/2024 1928
Acres based on IR Interpretation from IR Flight
North American 1983 Datum, Lat/Long Grid

FC Point Type	Label	Elevation (Feet)	Latitude	Longitude
Helibase	McKenzie Helibase		44° 10.904' N	122° 05.071' W
Dip Site	Blue River Lake		44° 11.681' N	122° 15.609' W
Helispot	H-1		44° 10.542' N	122° 16.924' W



- Helispot
 - ⊙ Helibase
 - ⌘ Division Break
 - Ⓜ Incident Command Post
 - Drop Point
 - Ⓜ Camp
 - Ⓜ Staging Area
 - Ⓜ Lookout
 - Hot Spot - Spot Fire
 - Bridge
 - Resource Location
 - ⬢ Repeater
 - ⬢ Dip Site
 - ⬢ Draft Site
 - Ⓜ Completed Dozer Line
 - Ⓜ Completed Hand Line
 - Ⓜ Completed Road as Line
 - Ⓜ Planned Dozer Line
 - Ⓜ Planned Mixed Construction Line
 - Ⓜ Planned Road as Line
 - Ⓜ Proposed Line
 - Ⓜ Temporary Flight Restriction
 - Ⓜ Contained
 - Ⓜ Uncontained
 - Ⓜ Wildfire Perimeter
 - ▲ Mountain Peak
 - Retardant Yes
 - Retardant Avoidance (Terrestrial)
 - Retardant Avoidance (Aquatic)
- Dip Sites
- No
 - READ Approval Required
 - Yes