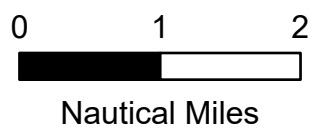
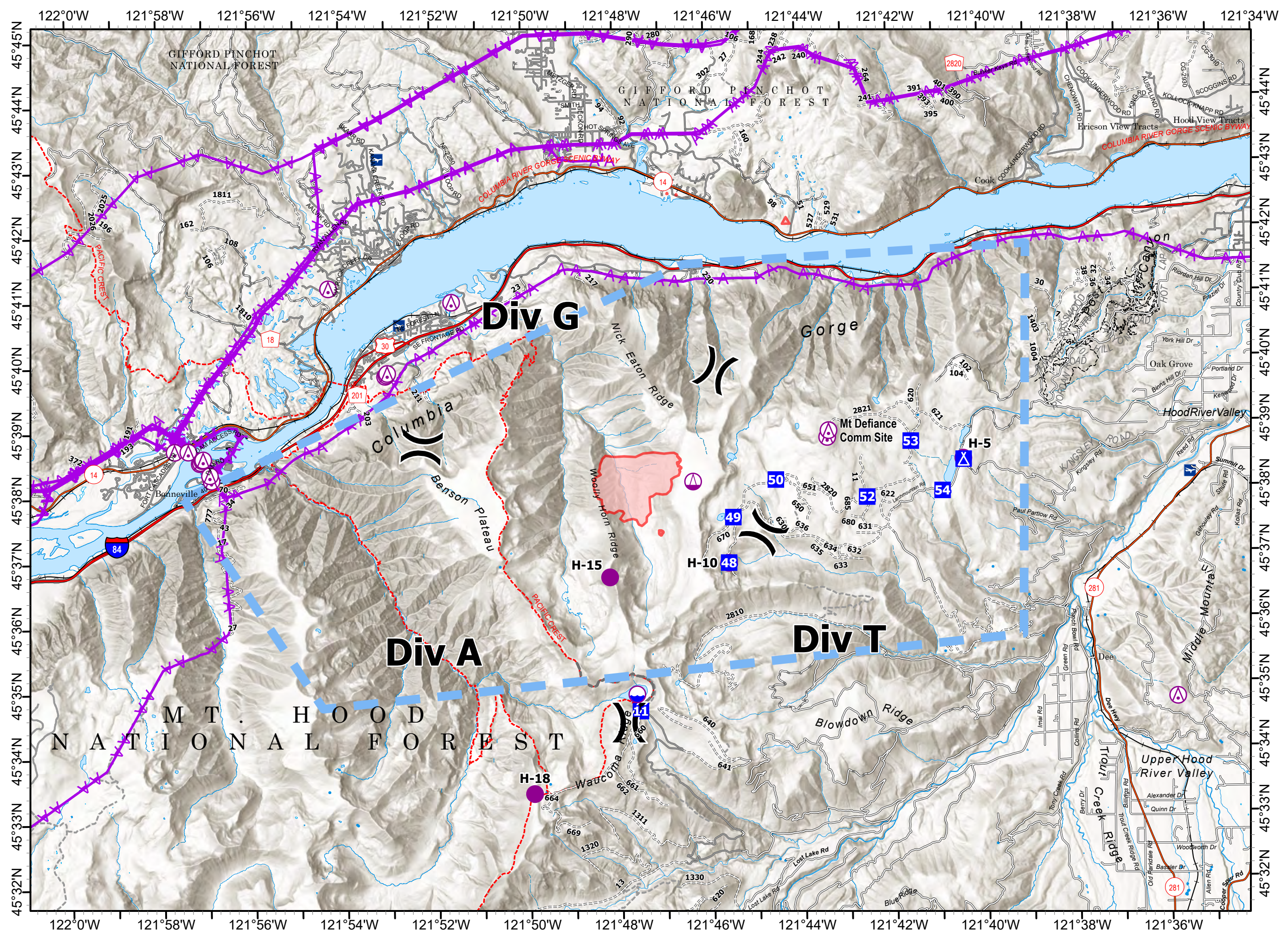


Air Ops
 Whisky Creek
 OR-MHF-000639
 07/27/2024
 856 acres
 at 07/25/2024 1715 Hrs



- Aerial Hazard
- Dip Site
- Helispot
- Sling Site
- Division Break
- Drop Point
- Camp
- Other
- Aerial Hazard
- Temporary Flight Restriction
- Wildfire Daily Fire Perimeter



Matthew Hoffman
 7/24/2024, 1548 hrs
 Acres from IR
 North American 1983 Datum. Lat/Long Grid

Incident Name	FC Point Type	Label	Comments	Latitude WGS84 DDM	Longitude WGS84 DDM
Whisky Creek	Airstrip or Airport			45° 40.365' N	121° 32.051' W
Whisky Creek	Airstrip or Airport		Ken Jernstedt	45° 40.440' N	121° 32.364' W
Whisky Creek	Drop Point	11	DP 11	45° 34.651' N	121° 47.565' W
Whisky Creek	Drop Point	48	DP 48	45° 36.911' N	121° 45.587' W
Whisky Creek	Drop Point	49	DP 49	45° 37.608' N	121° 45.480' W
Whisky Creek	Drop Point	50	DP-50	45° 38.175' N	121° 44.537' W
Whisky Creek	Drop Point	52	DP-52	45° 37.892' N	121° 42.545' W
Whisky Creek	Drop Point	53	53	45° 38.739' N	121° 41.572' W
Whisky Creek	Drop Point	54	DP54 - Spike Camp Supply & Food	45° 37.974' N	121° 40.893' W
Whisky Creek	Helibase		Columbia Gorge	45° 36.812' N	121° 10.120' W
Whisky Creek	Helispot	H-10	H-10	45° 36.908' N	121° 45.588' W
Whisky Creek	Helispot	H-15	Type 3	45° 36.711' N	121° 48.195' W
Whisky Creek	Helispot	H-18		45° 33.402' N	121° 49.905' W
Whisky Creek	Helispot	H-5	Type 3, Type 2 - Kingsley Dam	45° 38.465' N	121° 40.428' W
Whisky Creek	Incident Command Post		Hood River High School	45° 41.089' N	121° 32.774' W