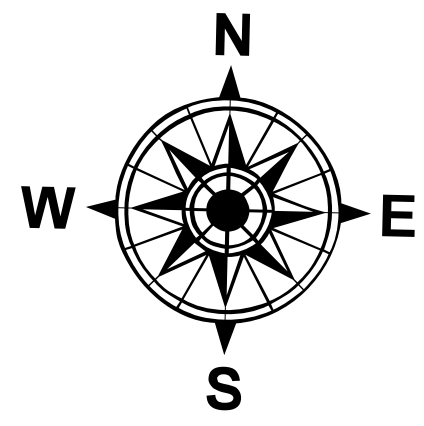


Operations

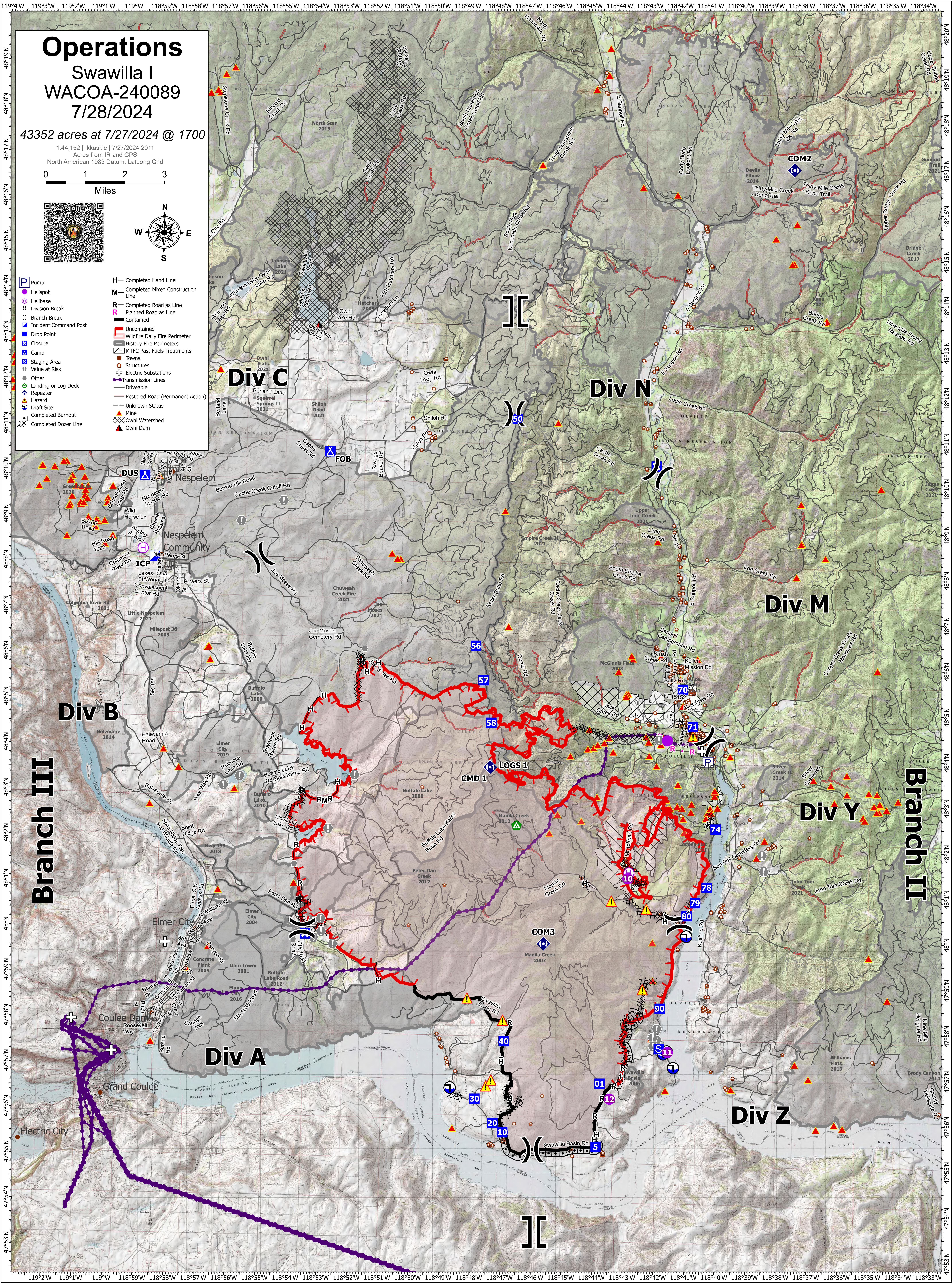
Swawilla I WACO-240089 7/28/2024

43352 acres at 7/27/2024 @ 1700

1:44,152 | kaskie | 7/27/2024 2011
Acres from IR and GPS
North American 1983 Datum, Lat/Long Grid



- | | |
|--------------------------------|--|
| P Pump | H Completed Hand Line |
| ⊙ Helispot | M Completed Mixed Construction Line |
| ⊗ Helibase | R Completed Road as Line |
| X Division Break | P Planned Road as Line |
| ⊥ Branch Break | ⊥ Contained |
| ⊥ Incident Command Post | ⊥ Uncontained |
| ⊥ Drop Point | ⊥ Wildfire Daily Fire Perimeter |
| ⊥ Closure | ⊥ History Fire Perimeters |
| ⊥ Camp | ⊥ MTFC Past Fuels Treatments |
| ⊥ Staging Area | ⊥ Towns |
| ⊥ Value at Risk | ⊥ Structures |
| ⊥ Other | ⊥ Electric Substations |
| ⊥ Landing or Log Deck | ⊥ Transmission Lines |
| ⊥ Repeater | ⊥ Driveable |
| ⊥ Hazard | ⊥ Restored Road (Permanent Action) |
| ⊥ Draft Site | ⊥ Unknown Status |
| ⊥ Completed Burnout | ⊥ Mine |
| ⊥ Completed Dozer Line | ⊥ Owghi Watershed |
| | ⊥ Owghi Dam |



Div C

Div N

Div M

Div B

Div Y

Div A

Div Z

Branch III

Branch II

LOGS 1

CMD 1

COM 3

Manila Creek 2007

COM 2

Thirty-Mile Creek - Keno Trail

COM 1

Manila Creek 2012

COM 2

Thirty-Mile Creek - Keno Trail

COM 1

Manila Creek 2012

COM 2

Thirty-Mile Creek - Keno Trail

COM 1

Manila Creek 2012