


Pilot Durkee


OR-VAD-240141

07/28/2024

288,690 acres at 07/25/2024 1822 PDT

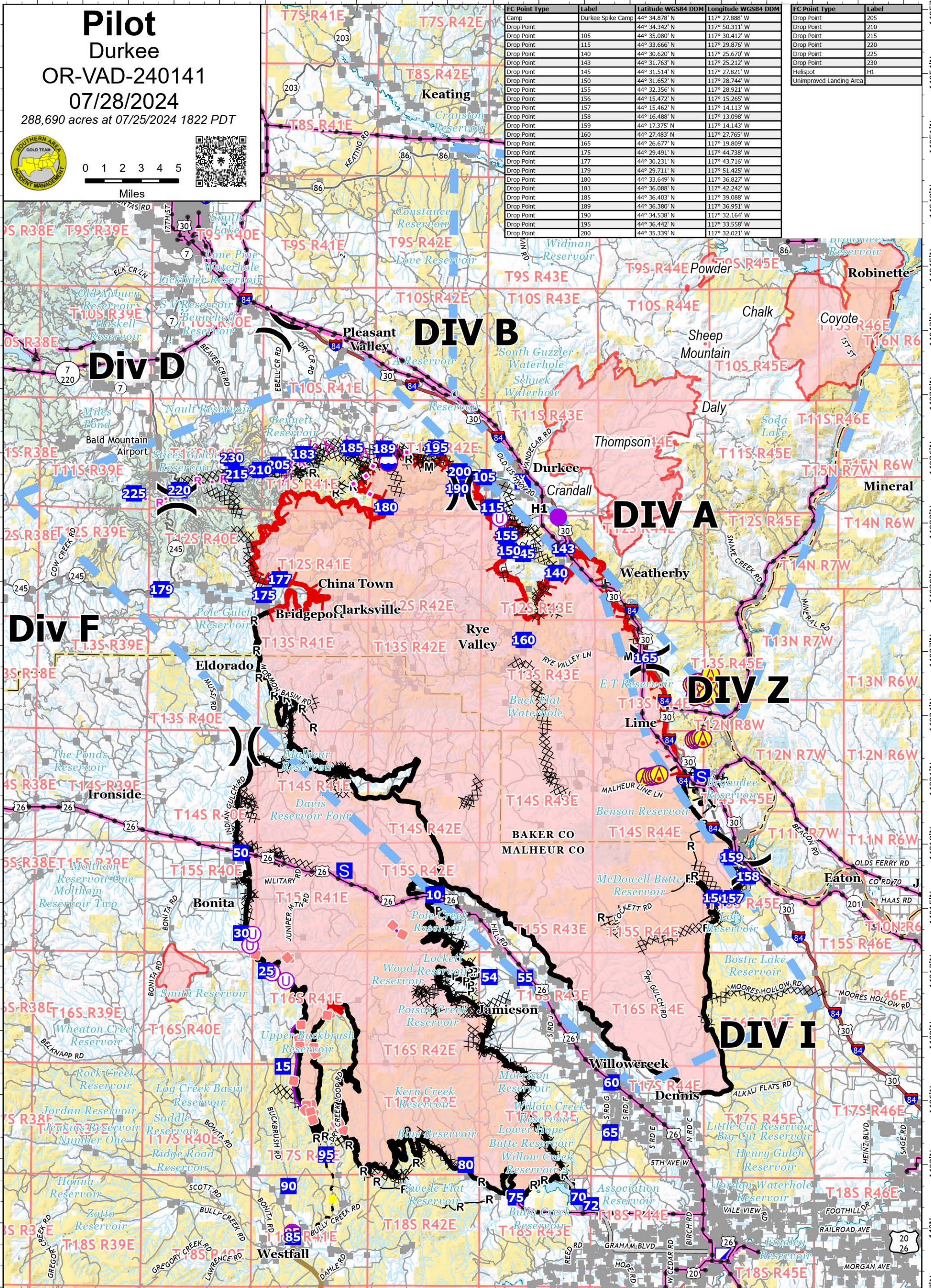


0 1 2 3 4 5 Miles



| FC Point Type | Label | Latitude WGS84 DDM | Longitude WGS84 DDM |
|---------------|-------------------|--------------------|---------------------|
| Camp | Durkee Spike Camp | 44° 34.878' N | 117° 27.888' W |
| Drop Point | 105 | 44° 35.080' N | 117° 30.412' W |
| Drop Point | 115 | 44° 33.666' N | 117° 29.876' W |
| Drop Point | 140 | 44° 30.620' N | 117° 25.670' W |
| Drop Point | 143 | 44° 31.763' N | 117° 25.212' W |
| Drop Point | 145 | 44° 31.514' N | 117° 27.821' W |
| Drop Point | 150 | 44° 31.652' N | 117° 28.744' W |
| Drop Point | 155 | 44° 32.356' N | 117° 28.921' W |
| Drop Point | 156 | 44° 15.472' N | 117° 15.265' W |
| Drop Point | 157 | 44° 15.462' N | 117° 14.113' W |
| Drop Point | 158 | 44° 16.488' N | 117° 13.098' W |
| Drop Point | 159 | 44° 17.375' N | 117° 14.143' W |
| Drop Point | 160 | 44° 27.483' N | 117° 27.765' W |
| Drop Point | 165 | 44° 26.677' N | 117° 19.809' W |
| Drop Point | 175 | 44° 29.491' N | 117° 44.738' W |
| Drop Point | 177 | 44° 30.231' N | 117° 43.716' W |
| Drop Point | 179 | 44° 29.711' N | 117° 51.425' W |
| Drop Point | 180 | 44° 33.649' N | 117° 36.827' W |
| Drop Point | 183 | 44° 36.088' N | 117° 42.242' W |
| Drop Point | 185 | 44° 36.403' N | 117° 39.088' W |
| Drop Point | 189 | 44° 36.380' N | 117° 36.951' W |
| Drop Point | 190 | 44° 34.538' N | 117° 32.164' W |
| Drop Point | 195 | 44° 36.442' N | 117° 33.558' W |
| Drop Point | 200 | 44° 35.339' N | 117° 32.021' W |

| FC Point Type | Label |
|-------------------------|-------|
| Drop Point | 205 |
| Drop Point | 210 |
| Drop Point | 215 |
| Drop Point | 220 |
| Drop Point | 225 |
| Drop Point | 230 |
| Helispot | H1 |
| Unimproved Landing Area | |



| | | | | | |
|-----------------------------------|------------------------|----------------------|------------------------------|-------------------------|--------------|
| Completed Burnout Line | Completed Plow Line | Planned Road as Line | Repair Line | Unimproved Landing Area | Camp |
| Completed Dozer Line | Completed Road as Line | Proposed Line | Retardant Drop | Division Break | Staging Area |
| Completed Hand Line | Planned Dozer Line | Access Route | Temporary Flight Restriction | Incident Command Post | Lookout |
| Completed Mixed Construction Line | Planned Fuel Break | Highlighted Feature | Aerial Hazard | Drop Point | Dip Site |
| | Other | Helispot | Electric Transmission Lines | | |