

# Pilot

Falls

OR-MAF-002502

7/29/2024

142,307 acres on 7/27/2024 @ 2158 PDT

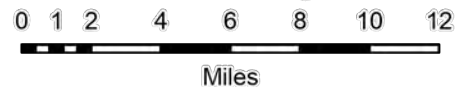
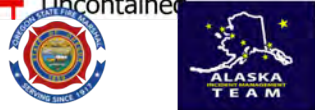
Telephone

OR-MAF-002523

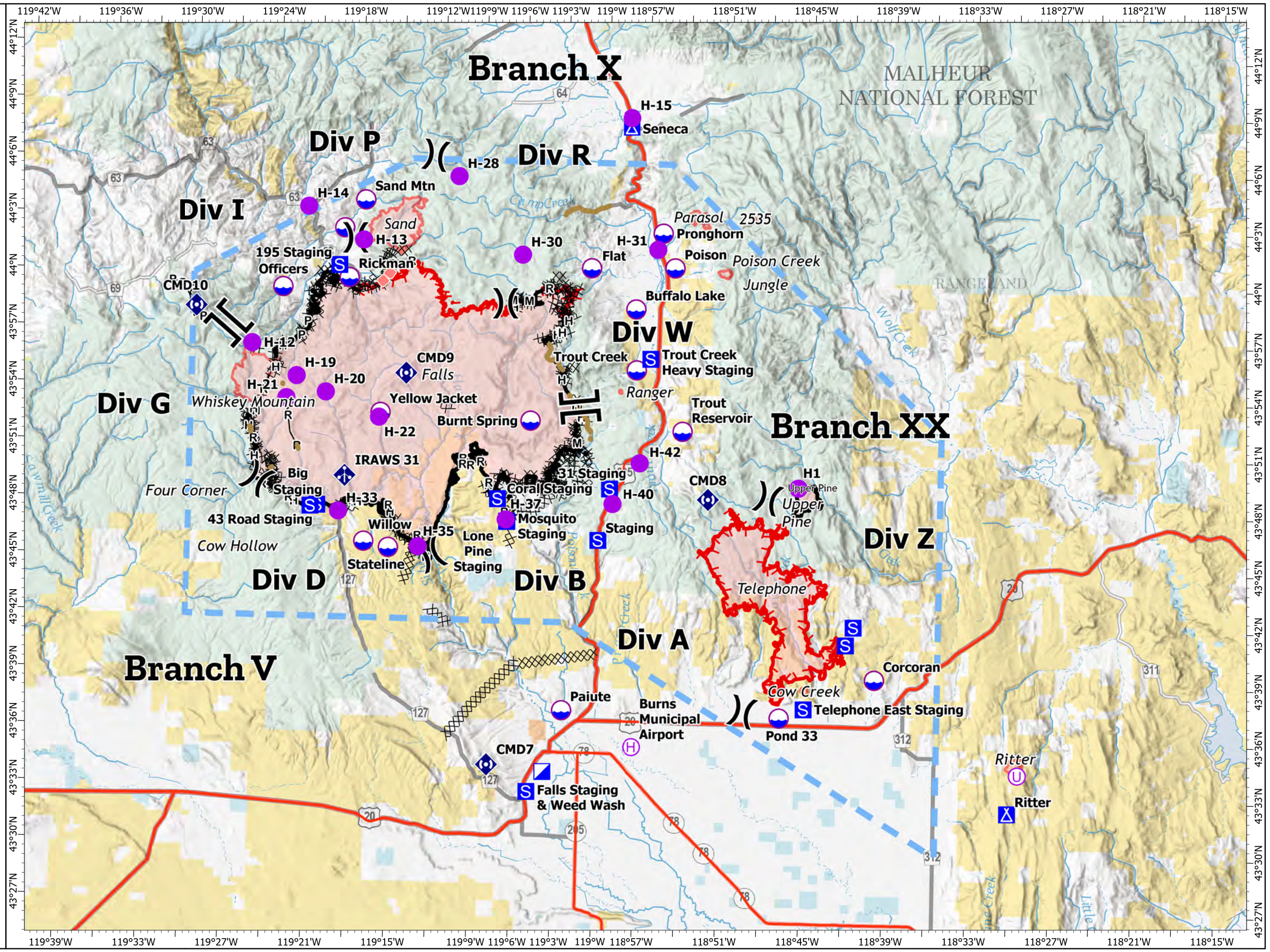
7/29/2024

22,429 acres on 7/27/2024 @ 2158 PDT

- Helispot
- ⊕ Helibase
- ⊙ Unimproved Landing Area
- ) Division Break
- || Branch Break
- ▣ Incident Command Post
- ▣ Camp
- ⊞ Staging Area
- ⊞ Mobile Weather Unit
- ⊞ Repeater
- ⊞ Dip Site
- xx Completed Dozer Line
- H Completed Hand Line
- M Completed Mixed Construction Line
- P Completed Plow Line
- R Completed Road as Line
- Repair Line
- Road Repair
- Retardant Drop
- Temporary Flight Restriction
- Contained
- Uncontained



1:350,000 | NW8 | 7/28/2024 2126  
Acres from IR  
North American 1983 Datum. LatLong Grid



<b>Incident Name</b>	<b>FC Point Type</b>	<b>Label</b>	<b>Latitude WGS84 DDM</b>	<b>Longitude WGS84 DDM</b>
Falls	Camp	Seneca	44° 08.186' N	118° 58.318' W
Falls	Dip Site	Willow	43° 46.030' N	119° 17.161' W
Falls	Dip Site	Stateline	43° 45.740' N	119° 15.361' W
Falls	Dip Site	Yellow Jacket	43° 52.840' N	119° 16.161' W
Falls	Dip Site	Pronghorn	44° 02.610' N	118° 55.811' W
Falls	Dip Site	Poison	44° 00.793' N	118° 54.893' W
Falls	Dip Site	Buffalo Lake	43° 58.583' N	118° 57.673' W
Falls	Dip Site	Trout Creek	43° 55.372' N	118° 57.536' W
Falls	Dip Site	Trout Reservoir	43° 52.192' N	118° 54.101' W
Falls	Dip Site	Officers	43° 59.328' N	119° 23.499' W
Falls	Dip Site	Burnt Spring	43° 52.587' N	119° 05.221' W
Falls	Dip Site	Paiute	43° 37.368' N	119° 02.482' W
Falls	Dip Site	Rickman	43° 59.902' N	119° 18.684' W
Falls	Dip Site	Corcoran	43° 39.283' N	118° 39.818' W
Falls	Dip Site	Pond 33	43° 37.187' N	118° 46.669' W
Falls	Dip Site		44° 02.517' N	119° 19.110' W
Falls	Dip Site	Flat	44° 00.699' N	119° 01.010' W
Falls	Helibase	Burns Municipal Airport	43° 35.510' N	118° 57.321' W
Falls	Helispot	H-21	43° 53.478' N	119° 23.045' W
Falls	Helispot	H-33	43° 47.591' N	119° 19.055' W
Falls	Helispot	H-19	43° 54.656' N	119° 22.345' W
Falls	Helispot	H-20	43° 53.840' N	119° 20.188' W
Falls	Helispot	H-40	43° 48.298' N	118° 59.109' W
Falls	Helispot	H-22	43° 52.588' N	119° 16.264' W
Falls	Helispot	H-37	43° 47.350' N	119° 06.851' W
Falls	Helispot	H-14	44° 03.600' N	119° 21.781' W
Falls	Helispot	H-42	43° 50.478' N	118° 57.167' W
Falls	Helispot	H-35	43° 45.819' N	119° 13.202' W
Falls	Helispot	H-15	44° 08.663' N	118° 58.307' W
Falls	Helispot	H-28	44° 05.375' N	119° 10.860' W
Falls	Helispot	H-30	44° 01.322' N	119° 06.076' W
Falls	Helispot	H-31	44° 01.752' N	118° 56.176' W
Falls	Helispot	H-12	43° 56.325' N	119° 25.649' W
Ritter	Camp	Ritter	43° 32.352' N	118° 30.029' W
Ritter	Unimproved Landing Area		43° 34.375' N	118° 29.338' W
Sand	Dip Site	Sand Mtn	44° 04.018' N	119° 17.629' W
Sand	Helispot	H-13	44° 01.902' N	119° 17.703' W
Upper Pine	Helispot	H1	43° 49.328' N	118° 45.578' W