

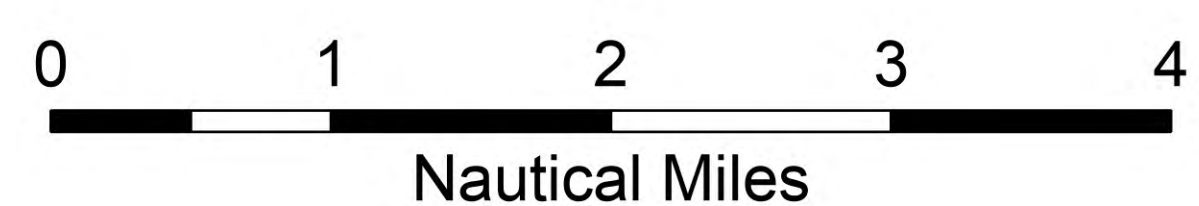
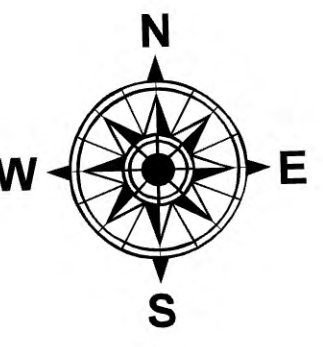
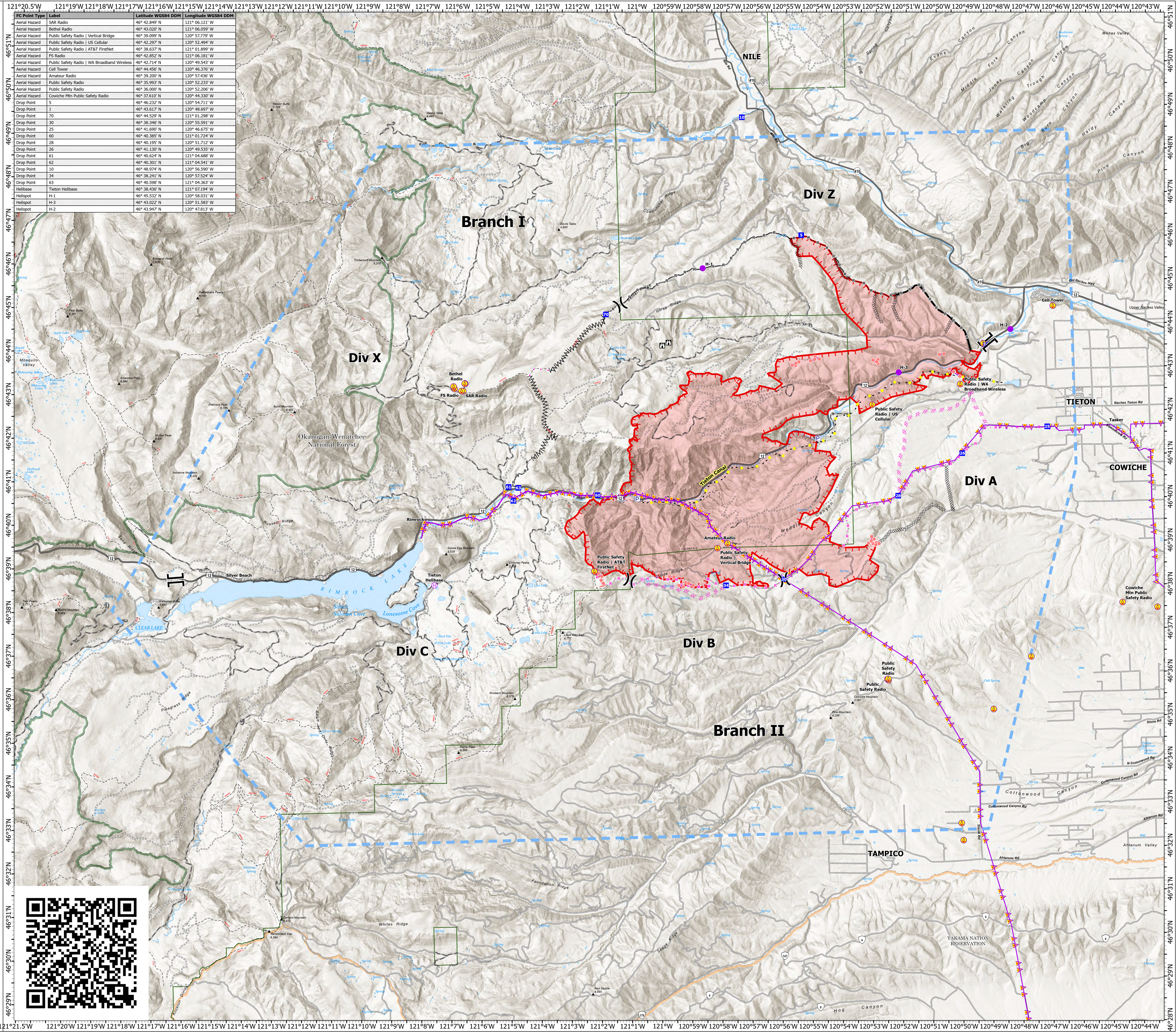
AirOps

Retreat
WA-SES-000477
July 29, 2024 Day

24,629 acres at 7/28/2024 1810hr

- Aerial Hazard
- Helispot
- Helibase
- Division Break
- Branch Break
- Drop Point
- Lookout
- Pump
- Completed Dozer Line
- Completed Fuel Break
- Completed Hand Line
- Completed Road as Line
- Planned Dozer Line
- Planned Mixed Construction Line
- Planned Road as Line
- Proposed Line
- Access Route
- Highlighted Feature
- Aerial Hazard
- Retardant Drop
- Temporary Flight Restriction
- Contained
- Uncontained
- Other
- Wildfire Daily Fire Perimeter
- Primary Highway
- Secondary Highway
- Road
- Road, Paved
- Road, Dirt/Gravel
- Road, high clearance
- Railroad
- Administrative FS Boundary
- Ranger District Boundary
- FS Wilderness Boundary
- County Boundary

FC Point Type	Label	Latitude WGS84 DDM	Longitude WGS84 DDM
Aerial Hazard	SAR Radio	46° 42.849' N	121° 06.121' W
Aerial Hazard	Bethel Radio	46° 43.020' N	121° 06.059' W
Aerial Hazard	Public Safety Radio Vertical Bridge	46° 39.999' N	120° 57.779' W
Aerial Hazard	Public Safety Radio US Cellular	46° 42.297' N	120° 52.994' W
Aerial Hazard	Public Safety Radio AT&T FirstNet	46° 38.637' N	121° 01.899' W
Aerial Hazard	FS Radio	46° 42.852' N	121° 06.181' W
Aerial Hazard	Public Safety Radio WA Broadband Wireless	46° 42.714' N	120° 49.543' W
Aerial Hazard	Cell Tower	46° 44.456' N	120° 46.376' W
Aerial Hazard	Amateur Radio	46° 39.269' N	120° 57.336' W
Aerial Hazard	Public Safety Radio	46° 35.993' N	120° 52.233' W
Aerial Hazard	Public Safety Radio	46° 36.000' N	120° 52.206' W
Aerial Hazard	Cowiche Mtn Public Safety Radio	46° 37.610' N	120° 44.330' W
Drop Point	5	46° 46.232' N	120° 54.711' W
Drop Point	1	46° 43.617' N	120° 48.697' W
Drop Point	70	46° 44.529' N	121° 01.298' W
Drop Point	30	46° 38.346' N	120° 55.591' W
Drop Point	25	46° 41.690' N	120° 46.675' W
Drop Point	60	46° 40.385' N	121° 01.724' W
Drop Point	28	46° 40.195' N	120° 51.712' W
Drop Point	26	46° 41.130' N	120° 49.533' W
Drop Point	61	46° 40.634' N	121° 04.688' W
Drop Point	62	46° 40.301' N	121° 04.541' W
Drop Point	10	46° 48.974' N	120° 56.590' W
Drop Point	34	46° 38.241' N	120° 57.524' W
Drop Point	63	46° 40.598' N	121° 04.363' W
Helibase	Tieton Helibase	46° 38.436' N	121° 07.194' W
Helispot	H-1	46° 45.537' N	120° 58.031' W
Helispot	H-3	46° 43.022' N	120° 51.983' W
Helispot	H-2	46° 43.947' N	120° 47.813' W



1:50,000 | NR1 GISS | 7/28/2024 2102
Acres from IR
North American 1983 Datum. Lat/Long Grid

