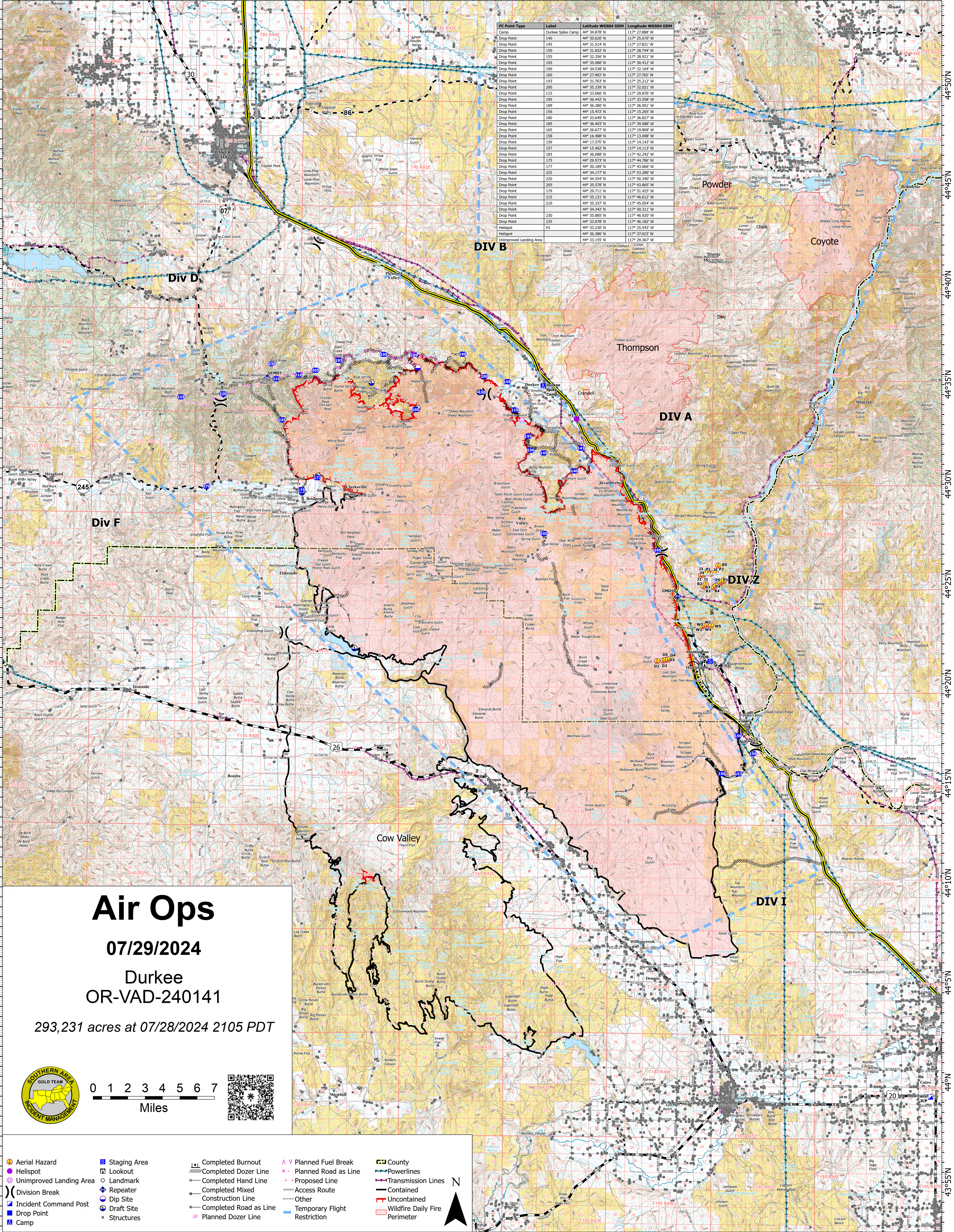


118°5'W 118°W 117°55'W 117°50'W 117°45'W 117°40'W 117°35'W 117°30'W 117°25'W 117°20'W 117°15'W 117°10'W 117°5'W 117°W



FC Point Type	Label	Latitude WGS84 DDM	Longitude WGS84 DDM
Camp	Durkee Spike Camp	44° 34.572' N	117° 27.688' W
Drop Point	140	44° 30.620' N	117° 25.670' W
Drop Point	145	44° 31.514' N	117° 27.821' W
Drop Point	150	44° 31.652' N	117° 28.744' W
Drop Point	155	44° 32.356' N	117° 28.921' W
Drop Point	105	44° 35.080' N	117° 30.412' W
Drop Point	150	44° 34.538' N	117° 32.164' W
Drop Point	160	44° 27.483' N	117° 27.765' W
Drop Point	143	44° 31.763' N	117° 25.212' W
Drop Point	200	44° 35.339' N	117° 32.021' W
Drop Point	115	44° 33.666' N	117° 29.876' W
Drop Point	195	44° 36.442' N	117° 33.558' W
Drop Point	189	44° 36.380' N	117° 36.951' W
Drop Point	156	44° 15.472' N	117° 15.265' W
Drop Point	180	44° 33.649' N	117° 36.827' W
Drop Point	185	44° 36.403' N	117° 39.088' W
Drop Point	165	44° 26.677' N	117° 19.809' W
Drop Point	158	44° 16.488' N	117° 13.098' W
Drop Point	159	44° 17.373' N	117° 14.143' W
Drop Point	157	44° 15.462' N	117° 14.113' W
Drop Point	183	44° 36.088' N	117° 42.242' W
Drop Point	175	44° 29.573' N	117° 44.786' W
Drop Point	177	44° 30.189' N	117° 43.666' W
Drop Point	225	44° 34.177' N	117° 53.289' W
Drop Point	220	44° 34.354' N	117° 50.340' W
Drop Point	205	44° 35.576' N	117° 43.865' W
Drop Point	179	44° 29.711' N	117° 51.425' W
Drop Point	215	44° 35.131' N	117° 46.612' W
Drop Point	210	44° 35.337' N	117° 45.054' W
Drop Point	230	44° 34.342' N	117° 50.311' W
Drop Point	225	44° 33.076' N	117° 46.182' W
Helispot	H1	44° 33.230' N	117° 25.543' W
Unimproved Landing Area		44° 33.155' N	117° 29.367' W

# Air Ops

07/29/2024

Durkee  
OR-VAD-240141

293,231 acres at 07/28/2024 2105 PDT



0 1 2 3 4 5 6 7  
Miles



- Aerial Hazard
- Helispot
- Unimproved Landing Area
- Division Break
- Incident Command Post
- Drop Point
- Camp
- Staging Area
- Lookout
- Landmark
- Repeater
- Dip Site
- Draft Site
- Structures
- Completed Burnout
- Completed Dozer Line
- Completed Hand Line
- Completed Mixed Construction Line
- Completed Road as Line
- Planned Dozer Line
- Planned Fuel Break
- Planned Road as Line
- Proposed Line
- Access Route
- Other
- Temporary Flight Restriction
- County
- Powerlines
- Transmission Lines
- Contained
- Uncontained
- Wildfire Daily Fire Perimeter

