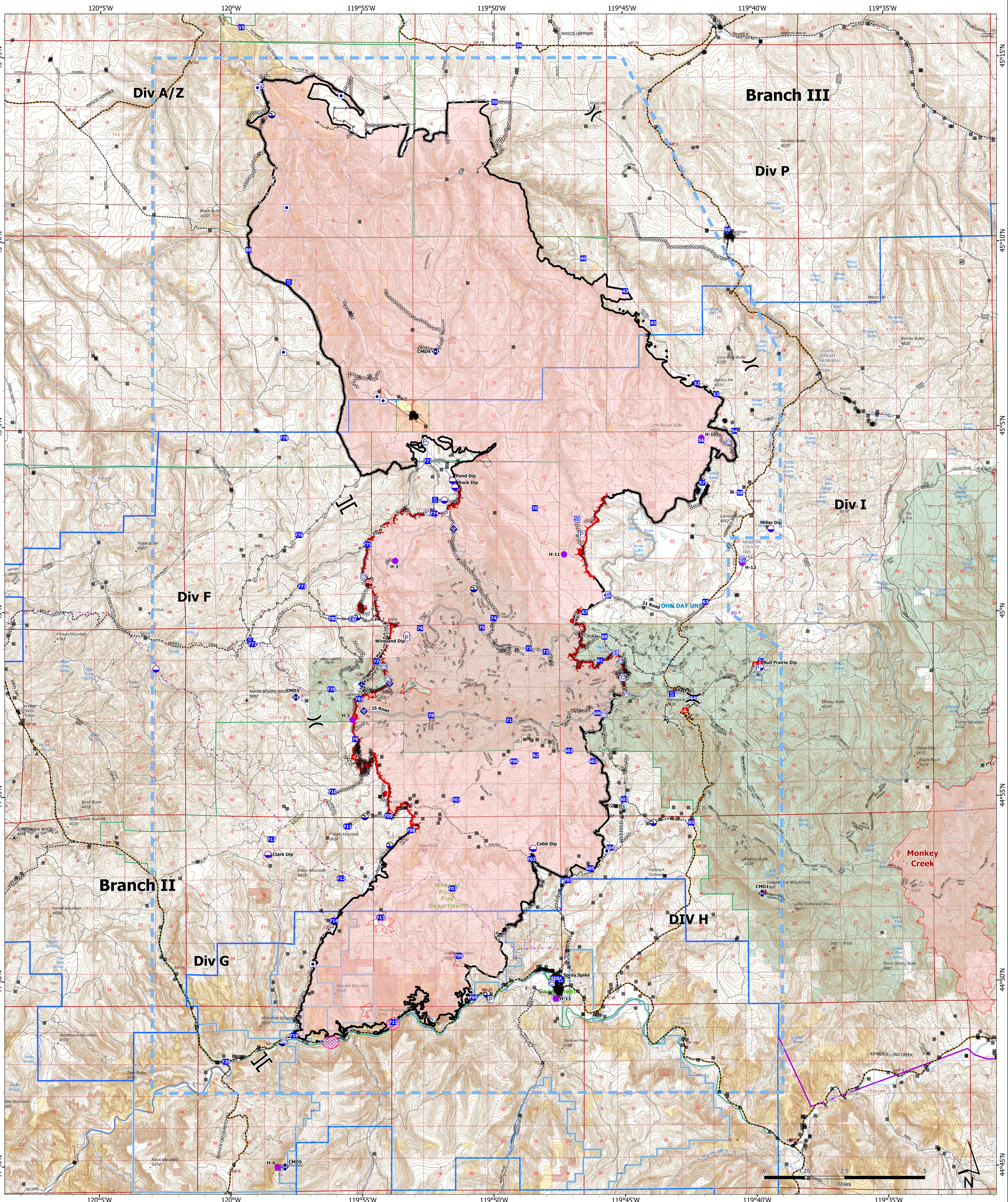


OPERATIONS

7/29/2024



Lone Rock
OR-PRD-0404
137,221 acres
at 7/29/2024 0132 PDT

- | | | | | |
|----------------|----------------------|-----------------------------------|-------------------------------|---------------------------------|
| Other Property | Staging Area | Dip Site | Completed Road as Line | DUMP STATION |
| Pump | Hot Spot - Spot Fire | Draft Site | Access Route | LOOKOUT/CABIN |
| Water Tank | Gate | Restricted Water Source | Temporary Flight Restriction | Address Point |
| Helispot | Bridge | Completed Dozer Line | Contained | ODF Forest Protection Districts |
| Division Break | Mobile Weather Unit | Completed Fuel Break | Uncontained | ODF Forest Protection Units |
| Branch Break | Internet Access | Completed Hand Line | Wildfire Daily Fire Perimeter | Avoidance Area |
| Drop Point | Repeater | Completed Mixed Construction Line | BOATING SITE | |
| Camp | Hazard | Completed Plow Line | CAMPGROUND | |

Logos for the National Incident Team, US Forest Service, and other participating agencies. A QR code is located in the bottom right corner of the legend area.