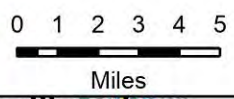


# Pilot Durkee

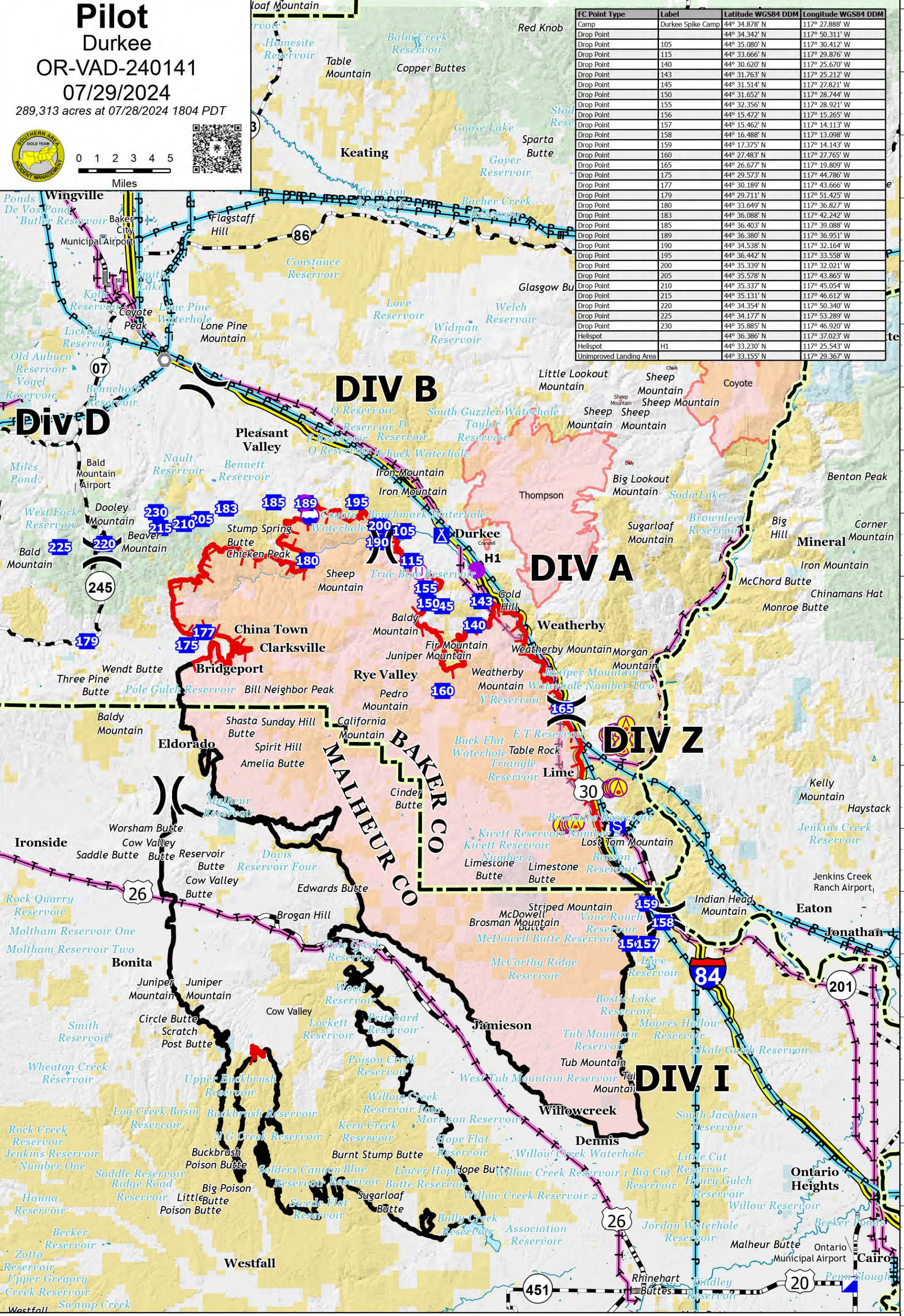
## OR-VAD-240141

### 07/29/2024

289,313 acres at 07/28/2024 1804 PDT



FC Point Type	Label	Latitude WGS84 DDM	Longitude WGS84 DDM
Camp	Durkee Spike Camp	44° 34.878' N	117° 27.888' W
Drop Point		44° 34.342' N	117° 50.311' W
Drop Point	105	44° 35.080' N	117° 30.412' W
Drop Point	115	44° 33.666' N	117° 29.876' W
Drop Point	140	44° 30.620' N	117° 25.670' W
Drop Point	143	44° 31.763' N	117° 25.212' W
Drop Point	145	44° 31.514' N	117° 27.821' W
Drop Point	150	44° 31.652' N	117° 28.744' W
Drop Point	155	44° 32.356' N	117° 28.921' W
Drop Point	156	44° 15.472' N	117° 15.265' W
Drop Point	157	44° 15.462' N	117° 14.113' W
Drop Point	158	44° 16.488' N	117° 13.098' W
Drop Point	159	44° 17.375' N	117° 14.143' W
Drop Point	160	44° 27.483' N	117° 27.765' W
Drop Point	165	44° 26.677' N	117° 19.809' W
Drop Point	175	44° 29.573' N	117° 44.786' W
Drop Point	177	44° 30.189' N	117° 43.666' W
Drop Point	179	44° 29.711' N	117° 51.425' W
Drop Point	180	44° 33.649' N	117° 36.827' W
Drop Point	183	44° 36.088' N	117° 42.242' W
Drop Point	185	44° 36.403' N	117° 39.088' W
Drop Point	189	44° 36.380' N	117° 36.951' W
Drop Point	190	44° 34.538' N	117° 32.164' W
Drop Point	195	44° 36.442' N	117° 33.558' W
Drop Point	200	44° 35.339' N	117° 32.021' W
Drop Point	205	44° 35.578' N	117° 43.865' W
Drop Point	210	44° 35.337' N	117° 45.054' W
Drop Point	215	44° 35.131' N	117° 46.612' W
Drop Point	220	44° 34.354' N	117° 50.340' W
Drop Point	225	44° 34.177' N	117° 53.289' W
Drop Point	230	44° 35.885' N	117° 46.920' W
Helispot		44° 36.386' N	117° 37.023' W
Helispot	H1	44° 33.230' N	117° 25.543' W
Unimproved Landing Area		44° 33.155' N	117° 29.367' W



Aerial Hazard	Division Break	Camp	Landmark	Powerlines	Uncontained
Helispot	Incident Command Post	Staging Area	Dip Site	County	Wildfire Daily Fire Perimeter
Unimproved Landing Area	Drop Point	Lookout	Transmission Lines	Contained	