

Air Operations

Battle Mountain Complex

OR973S-000250

7/30/2024 Day

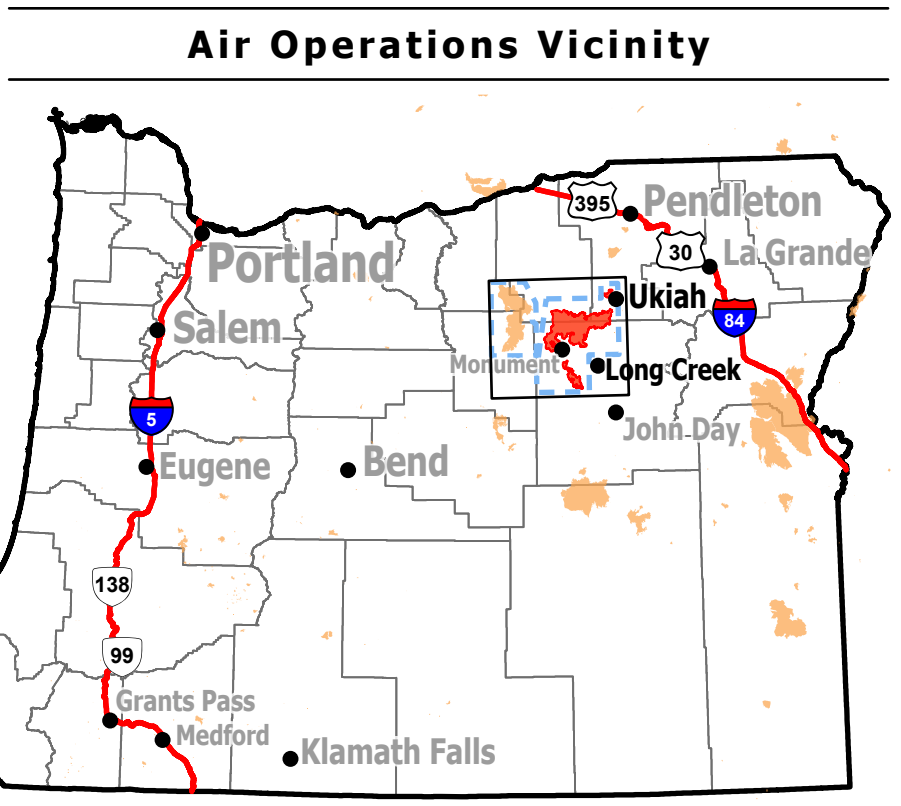
178,171 acres at 07/29/2024 0000 hrs

Incident Name	Acres
NF Owens	4,484
Monkey Creek	173,687
Courtrock	19,486



INCIDENT MANAGEMENT TEAM

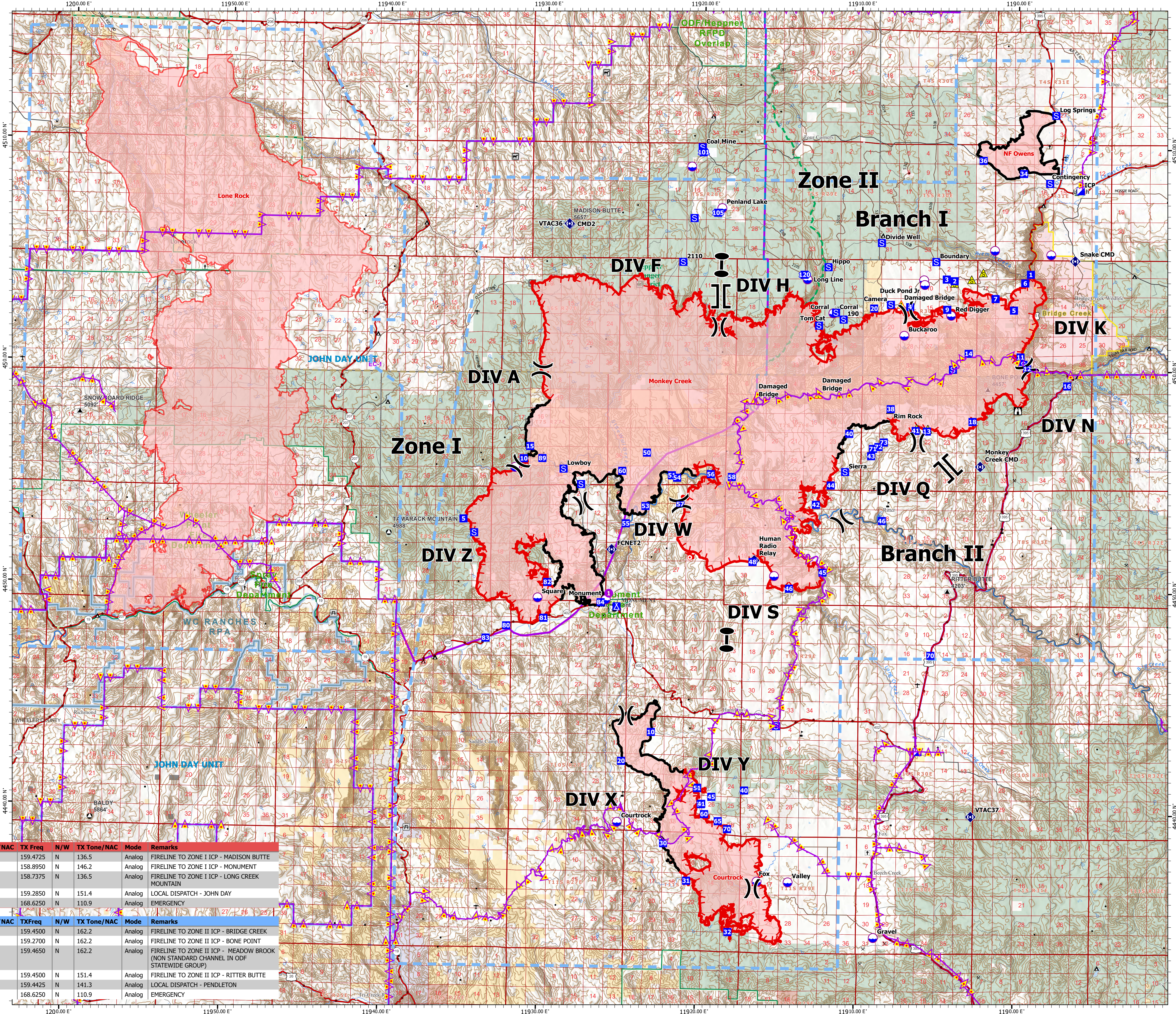
1:143,000 | ODF Team 3 GISS | 07/29/2024 2325
Acres from IR and GPS
North American 1983 Datum, Lat/Long Grid

ZONE I Frequencies		
	RX	TX
A/A TFR Entry	119.850	
A/A Fixed Wing - Zone I	120.650	
A/A Rotor - Zone I	125.350	
A/G 1 - Zone I	168.3750	
A/G 2 - Zone I	169.9875	
Deck	168.3500	
A/G IA-White Net	151.310	TX/RX T 156.7
A/G IA-Blue Net	159.2625	TX/RX T 156.7
A/G IA-38	167.375	
A/G IA-44	167.625	167.375
MEDEVAC - VMED 29	155.3475	TX/RX T 156.7
Deck		

ZONE II Frequencies		
	AM	FM
A/A TFR Entry	119.8500	
A/A Rotor (Primary)	125.3500	
A/A Rotor (Secondary)	126.2500	
A/A Fixed Wing - Zone II	121.2500	
A/G 1 - Zone II	TX/RX	169.8125
A/G 2 - Zone II	TX/RX	170.0250
MEDEVAC - VMED 29	TX/RX T156.7	155.3475
Deck		163.1000

ZONE I CMD FREQs	Assignment	RX Freq	N/W	RX Tone/NAC	TX Freq	N/W	TX Tone/NAC	Mode	Remarks
VTAC36	Command	151.1375	N	156.7	159.4725	N	136.5	Analog	FIRELINE TO ZONE I ICP - MADISON BUTTE
FCNET2	Command	151.4450	N	146.2	158.8950	N	146.2	Analog	FIRELINE TO ZONE I ICP - MONUMENT
VTAC37	Command	154.4525	N	156.7	158.7375	N	136.5	Analog	FIRELINE TO ZONE I ICP - LONG CREEK MOUNTAIN
MADISON	Dispatch Repeater	151.1450	N	162.2	159.2850	N	151.4	Analog	LOCAL DISPATCH - JOHN DAY
AIRGUARD	Emergency	168.6250	N		168.6250	N	110.9	Analog	EMERGENCY
ZONE II CMD FREQs	Assignment	RX Freq	N/W	RX Tone/NAC	TX Freq	N/W	TX Tone/NAC	Mode	Remarks
F/C NET 3 BACKUP	Command	151.4300	N	162.2	159.4500	N	162.2	Analog	FIRELINE TO ZONE II ICP - BRIDGE CREEK
F/C NET 3 RPTR	CMD	151.2800	N	162.2	159.2700	N	162.2	Analog	FIRELINE TO ZONE II ICP - BONE POINT
F/C NET 1 RPTR	CMD	151.4000	N	131.8	159.4650	N	162.2	Analog	FIRELINE TO ZONE II ICP - MEADOW BROOK (NON STANDARD CHANNEL IN ODF STATEWIDE GROUP)
F/C NET CUSTOM	Command	151.1825	N	151.4	159.4500	N	151.4	Analog	FIRELINE TO ZONE II ICP - RITTER BUTTE
BLACK MNT	Dispatch Repeater	151.1600	N	131.8	159.4425	N	141.3	Analog	LOCAL DISPATCH - PENDLETON
AIRGUARD	Emergency	168.6250	N		168.6250	N	110.9	Analog	EMERGENCY



Battle Mountain Complex Waypoints			
IC Point Type	Name	Latitude	Longitude
Dp Site		45° 05.472' N	119° 01.444' W
Dp Site		45° 05.245' N	118° 57.866' W
Dp Site		45° 04.075' N	119° 05.312' W
Dp Site		44° 50.683' N	119° 15.289' W
Dp Site	Buckaroo	45° 01.567' N	119° 07.162' W
Dp Site	Catchford Dip	45° 09.089' N	119° 05.758' W
Dp Site	Conti Dip	45° 02.550' N	119° 11.880' W
Dp Site	Duck Pond Jr	45° 03.863' N	119° 05.882' W
Dp Site	Long Line	45° 04.065' N	119° 13.342' W
Dp Site	Monument	44° 49.541' N	119° 25.903' W
Dp Site	Penland Lake	45° 07.231' N	119° 18.810' W
Dp Site	Red Digger dip	45° 02.487' N	119° 04.194' W
Dp Site	Square	44° 59.346' N	119° 30.317' W
Dp Site	Wall	45° 55.452' N	119° 31.264' W
Drop Point	DP1	45° 04.363' N	119° 59.151' W
Drop Point	DP10	44° 55.852' N	119° 31.211' W
Drop Point	DP101	45° 09.741' N	119° 20.040' W
Drop Point	DP102	45° 07.023' N	119° 19.577' W
Drop Point	DP11	45° 00.127' N	119° 59.710' W
Drop Point	DP12	45° 00.127' N	118° 59.345' W
Drop Point	DP120	45° 04.274' N	119° 13.537' W
Drop Point	DP13	44° 57.263' N	119° 05.624' W
Drop Point	DP14	45° 00.782' N	119° 03.067' W
Drop Point	DP15	45° 06.405' N	119° 30.827' W
Drop Point	DP16	45° 09.480' N	119° 02.212' W
Drop Point	DP18	44° 57.712' N	119° 02.783' W
Drop Point	DP2	45° 04.048' N	119° 03.997' W
Drop Point	DP20	45° 02.782' N	119° 09.095' W
Drop Point	DP3	45° 04.119' N	119° 04.495' W
Drop Point	DP34	45° 08.903' N	119° 59.537' W
Drop Point	DP42	45° 09.480' N	119° 02.212' W
Drop Point	DP38	44° 58.256' N	119° 07.982' W
Drop Point	DP4	45° 02.860' N	119° 06.805' W
Drop Point	DP40	44° 57.125' N	119° 10.599' W
Drop Point	DP41	44° 57.286' N	119° 06.387' W
Drop Point	DP42	44° 53.917' N	119° 02.127' W
Drop Point	DP43	44° 56.137' N	119° 09.595' W
Drop Point	DP44	44° 54.796' N	119° 11.740' W
Drop Point	DP45	44° 50.861' N	119° 12.203' W
Drop Point	DP46	44° 50.121' N	119° 14.318' W
Drop Point	DP46	44° 53.214' N	119° 08.472' W
Drop Point	DP48	44° 53.308' N	119° 16.889' W
Drop Point	DP5	45° 02.746' N	119° 00.210' W
Drop Point	DP50	44° 56.179' N	119° 23.412' W
Drop Point	DP51	44° 55.174' N	119° 21.814' W
Drop Point	DP53	44° 53.774' N	119° 23.464' W
Drop Point	DP54	44° 53.060' N	119° 21.489' W
Drop Point	DP55	44° 52.982' N	119° 24.697' W
Drop Point	DP56	44° 55.246' N	119° 19.346' W
Drop Point	DP57	44° 53.877' N	119° 21.255' W
Drop Point	DP58	44° 55.127' N	119° 18.009' W
Drop Point	DP6	45° 03.975' N	118° 59.504' W
Drop Point	DP60	44° 55.345' N	119° 16.889' W
Drop Point	DP7	45° 03.259' N	119° 01.385' W
Drop Point	DP70	44° 47.160' N	119° 05.325' W
Drop Point	DP71	44° 56.459' N	119° 09.083' W
Drop Point	DP72	44° 56.548' N	119° 08.738' W
Drop Point	DP73	44° 56.751' N	119° 08.400' W
Drop Point	DP80	44° 48.315' N	119° 23.819' W
Drop Point	DP81	44° 48.677' N	119° 29.932' W
Drop Point	DP82	44° 50.292' N	119° 29.620' W
Drop Point	DP83	44° 47.747' N	119° 33.473' W
Drop Point	DP84	44° 49.414' N	119° 26.225' W
Drop Point	DP89	44° 55.872' N	119° 30.039' W
Drop Point	DP9	45° 02.758' N	119° 04.948' W
Staging Area	Helioport	44° 49.822' N	119° 25.716' W
Staging Area		45° 55.408' N	119° 28.682' W
Staging Area		45° 00.058' N	119° 04.033' W
Staging Area	100 Staging	44° 52.484' N	119° 34.293' W
Staging Area	2110 Staging	45° 02.272' N	119° 12.425' W
Staging Area	2110 Staging	45° 04.792' N	119° 21.248' W
Staging Area	Boundary Staging	45° 04.903' N	119° 05.166' W
Staging Area	Camera	45° 02.958' N	119° 08.031' W
Staging Area	Coal Mine Staging	45° 09.967' N	119° 20.107' W
Staging Area	Contingency Staging	45° 08.465' N	119° 57.968' W
Staging Area	Conti Staging	45° 02.578' N	119° 11.513' W
Staging Area	Divide Well	45° 05.741' N	119° 08.637' W
Staging Area	Hippo	45° 04.624' N	119° 12.817' W
Staging Area	Log Springs	45° 11.535' N	118° 57.608' W
Staging Area	Sierra	44° 55.404' N	119° 10.834' W
Staging Area	Snake Staging	45° 00.307' N	118° 59.580' W
Staging Area	Thompson Corral Staging	45° 06.771' N	119° 20.569' W
Staging Area	Tom Cat	45° 01.988' N	119° 12.383' W



LEGEND	
	Wildfire Daily Fire Perimeter
	Temporary Flight Restriction
	Aerial Hazard
	Helispot
	Division Break
	Branch Break
	Zone Break
	Incident Command Post
	Drop Point
	Camp
	Staging Area
	Lookout
	Hot Spot - Spot Fire
	Repeater
	Safety Zone
	Hazard
	Dip Site