

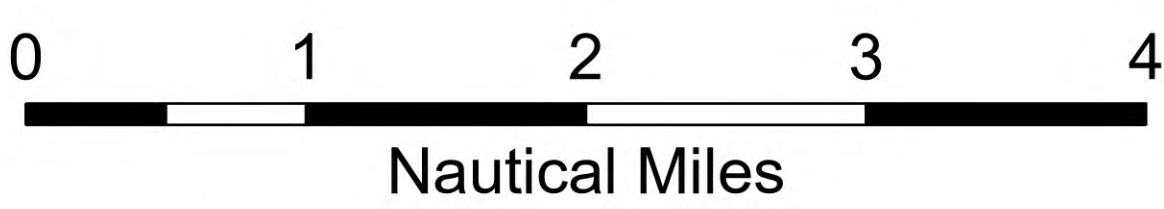
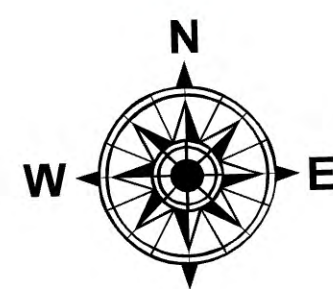
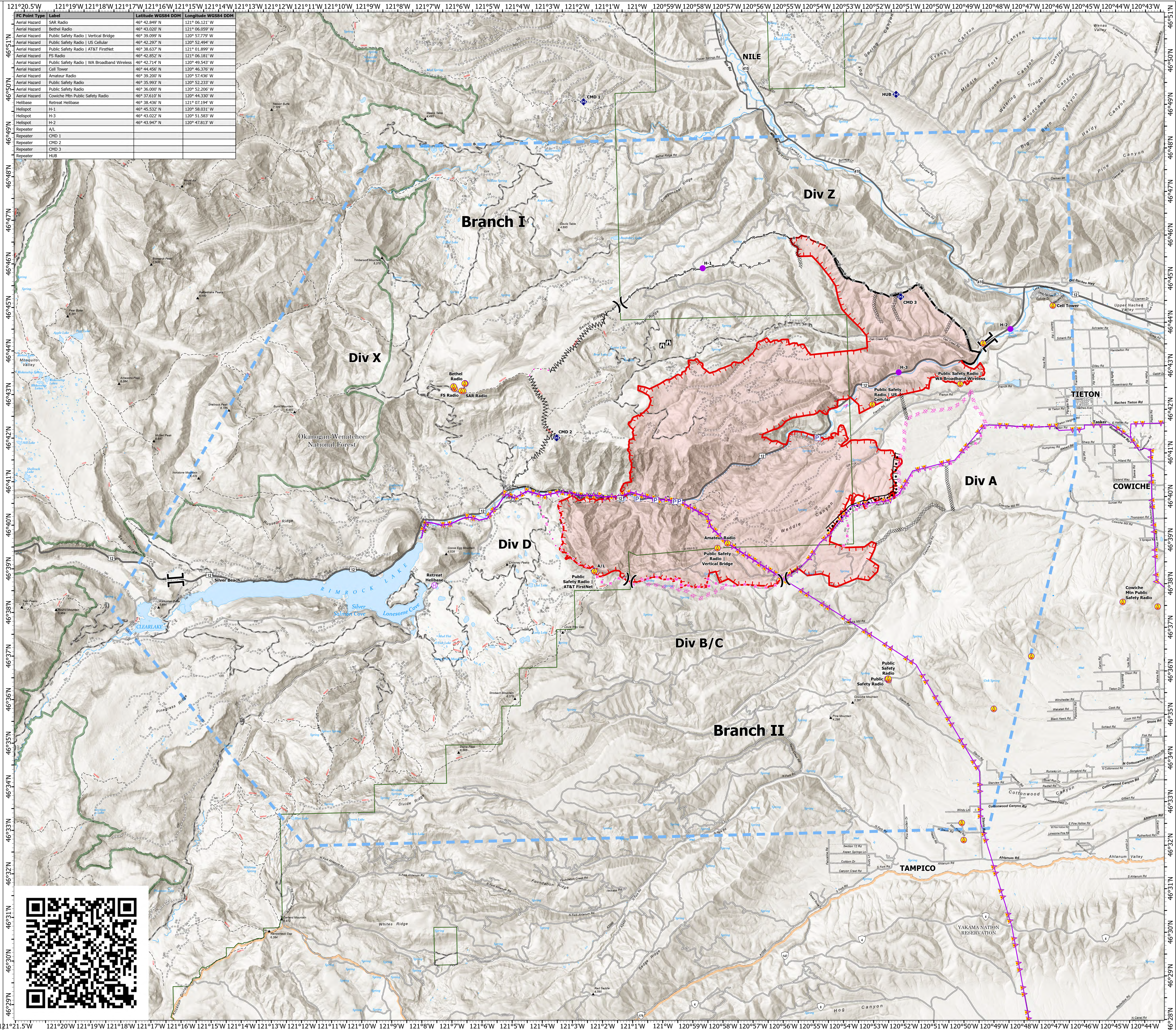
AirOps

Retreat
WA-SES-000477
July 30, 2024 Day

29,499 acres at 7/29/2024 1045hr

- Aerial Hazard
- Helispot
- Helibase
- Division Break
- Branch Break
- Lookout
- Repeater
- Pump
- Completed Burnout
- Completed Dozer Line
- Completed Fuel Break
- Completed Hand Line
- Completed Road as Line
- Planned Dozer Line
- Planned Fuel Break
- Planned Mixed Construction Line
- Planned Road as Line
- Proposed Line
- Aerial Hazard
- Temporary Flight Restriction
- Contained
- Uncontained
- Other
- Wildfire Daily Fire Perimeter
- Primary Highway
- Secondary Highway
- Road
- Road, Paved
- Road, Dirt/Gravel
- Road, high clearance
- Railroad
- Administrative FS Boundary
- Ranger District Boundary
- FS Wilderness Boundary
- County Boundary

FC Point Type	Label	Latitude WGS84 DDM	Longitude WGS84 DDM
Aerial Hazard	SAR Radio	46° 42.849' N	121° 06.121' W
Aerial Hazard	Bethel Radio	46° 43.020' N	121° 06.059' W
Aerial Hazard	Public Safety Radio Vertical Bridge	46° 39.999' N	120° 57.779' W
Aerial Hazard	Public Safety Radio US Cellular	46° 42.297' N	120° 52.494' W
Aerial Hazard	Public Safety Radio AT&T FireNet	46° 38.637' N	121° 01.899' W
Aerial Hazard	FS Radio	46° 42.852' N	121° 06.181' W
Aerial Hazard	Public Safety Radio WA Broadband Wireless	46° 42.714' N	120° 49.543' W
Aerial Hazard	Cell Tower	46° 44.456' N	120° 46.376' W
Aerial Hazard	Amateur Radio	46° 39.269' N	120° 57.436' W
Aerial Hazard	Public Safety Radio	46° 35.993' N	120° 52.233' W
Aerial Hazard	Public Safety Radio	46° 36.000' N	120° 52.206' W
Aerial Hazard	Cowiche Mtn Public Safety Radio	46° 37.610' N	120° 44.330' W
Helibase	Retreat Helibase	46° 38.436' N	121° 07.194' W
Helispot	H-1	46° 45.532' N	120° 58.031' W
Helispot	H-3	46° 43.027' N	120° 51.583' W
Helispot	H-2	46° 43.947' N	120° 47.813' W
Repeater	AVL		
Repeater	CMD 1		
Repeater	CMD 2		
Repeater	CMD 3		
Repeater	HUB		



1:50,000 | NR1 GISS | 7/29/2024 2218
Acres from IR
North American 1983 Datum. Lat/Long Grid

