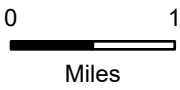


122°23'W 122°22'W 122°21'W 122°20'W 122°19'W 122°18'W 122°17'W 122°16'W 122°15'W 122°14'W 122°13'W 122°12'W 122°11'W 122°10'W

# Pilot Map

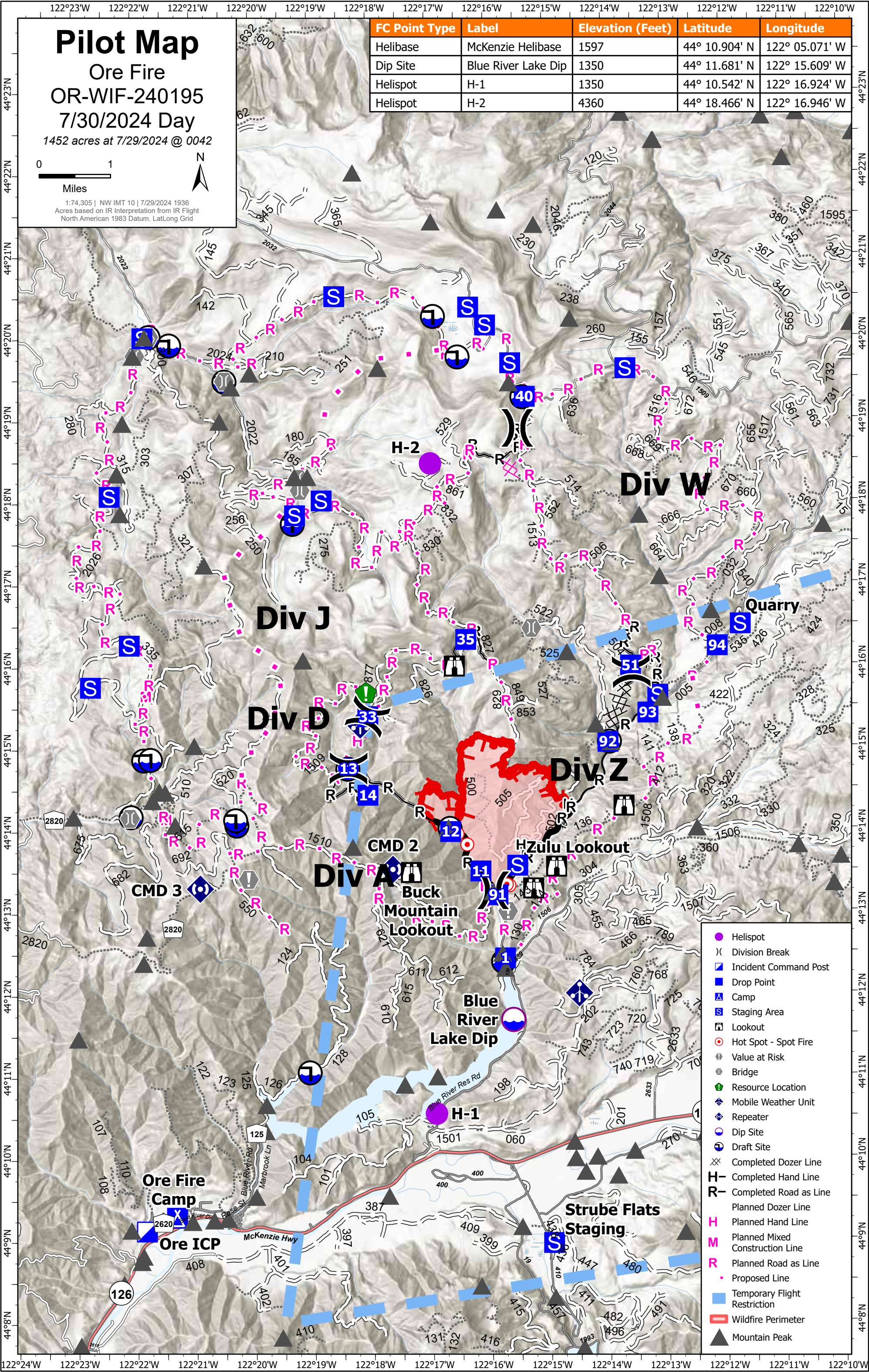
Ore Fire  
OR-WIF-240195  
7/30/2024 Day

1452 acres at 7/29/2024 @ 0042



1:74,305 | NW IMT 10 | 7/29/2024 1936  
Acres based on IR Interpretation from IR Flight  
North American 1983 Datum, LatLong Grid

FC Point Type	Label	Elevation (Feet)	Latitude	Longitude
Helibase	McKenzie Helibase	1597	44° 10.904' N	122° 05.071' W
Dip Site	Blue River Lake Dip	1350	44° 11.681' N	122° 15.609' W
Helispot	H-1	1350	44° 10.542' N	122° 16.924' W
Helispot	H-2	4360	44° 18.466' N	122° 16.946' W



- Helispot
- X Division Break
- Incident Command Post
- Drop Point
- ▲ Camp
- Staging Area
- Lookout
- Hot Spot - Spot Fire
- Value at Risk
- Bridge
- Resource Location
- ◆ Mobile Weather Unit
- ◆ Repeater
- Dip Site
- Draft Site
- X Completed Dozer Line
- H Completed Hand Line
- R Completed Road as Line
- Planned Dozer Line
- H Planned Hand Line
- M Planned Mixed Construction Line
- R Planned Road as Line
- Proposed Line
- Temporary Flight Restriction
- Wildfire Perimeter
- ▲ Mountain Peak