

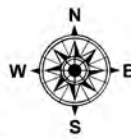
Airops

Homestead Complex
OR-UPF-240311

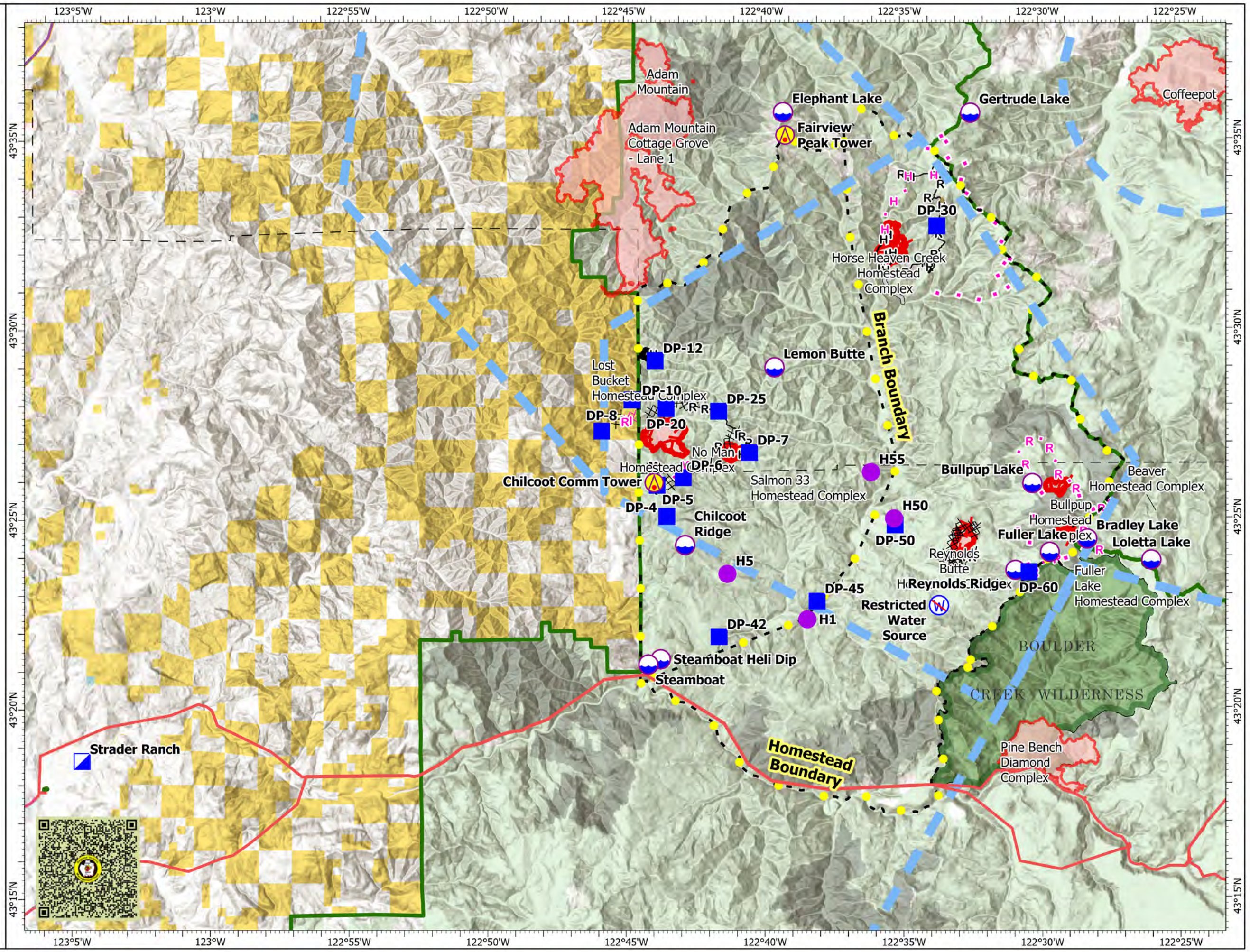
7/31/2024

1,636 acres at 7/28/2024 2115 PDT

- Aerial Hazard
- Helispot
- Incident Command Post
- Drop Point
- Dip Site
- Restricted Water Source
- Completed Dozer Line
- Completed Hand Line
- Completed Mixed Construction Line
- Completed Road as Line
- Planned Dozer Line
- Planned Hand Line
- Planned Mixed Construction Line
- Planned Road as Line
- Proposed Line
- Access Route
- Highlighted Feature
- Other
- Road Repair
- Temporary Flight Restriction
- Fire Edge (Field Collection)
- Contained
- Uncontained
- Wildfire Daily Fire Perimeter
- USFS Roadless Areas
- FS Wilderness Boundary
- Forest Service Land
- Bureau of Land Management Lands
- State Lands
- Electric Power Transmission Lines**
 - 100-161 (Kilovolts)
 - 220-287 (Kilovolts)
 - 500 (kilovolts)



1:175,000 | GBT5 2024 | 7/30/2024 2052
IR Flight
North American 1983 Datum, Lat/Long Grid



FeatureCategory	Label	LatWGS84_DDM	LongWGS84_DDM	Restricted	Comments
Aerial Hazard	Fairview Peak Tower	43° 35.134' N	122° 39.161' W		
Dip Site	Bradley Lake	43° 24.456' N	122° 28.294' W	Yes - See specifications	observed from a distance. looks shallow, loggy and hemmed in by tall trees. pilot should confirm
Dip Site	Bullpup Lake	43° 25.926' N	122° 30.284' W	Yes - See specifications	shallow, lots of logs in water. tall canopy surrounding pond. would need close pilot recon before using as a dip site.
Dip Site	Chilcoot Ridge	43° 24.331' N	122° 42.828' W	Yes - See specifications	Cleared with restrictions by REAFs King and Kim on 7/24/24. Restricted (invasive species): if used, one source, one bucket. Use retardant avoidance layer for drops (water should not be dropped on pond, wetland, or waterway). Not for draft, dip only.
Dip Site	Elephant Lake	43° 35.739' N	122° 39.234' W	Yes - See specifications	
Dip Site	Fuller Lake	43° 24.110' N	122° 29.656' W	Yes - See specifications	dark water, some rocks esp. on south end. deepest on south end, emergent vegetation on northern 2/3
Dip Site	Gertrude Lake	43° 35.703' N	122° 32.452' W	Yes - See specifications	
Dip Site	Lemon Butte	43° 29.011' N	122° 39.577' W	No	Lemon Butte actual dip site location. Approved by REAFs King and Kim. Bolts are facing out (unlike Steamboat). Refilled by tenders. Sketchy road to access.
Dip Site	Loletta Lake	43° 23.892' N	122° 25.981' W	Yes - See specifications	
Dip Site	Reynolds Ridge	43° 23.639' N	122° 30.910' W	No	Hemmed in by tall trees - needs pilot review
Dip Site	Steamboat	43° 21.186' N	122° 44.168' W	No	Start with cleaned bucket, do not dip out of other waterbodies until bucket is cleaned. Within in water work windows 7/1 - 9/15.
Dip Site	Steamboat Heli Dip	43° 21.324' N	122° 43.723' W	No	Approved by REAF Kim. Half of the bolts face in, so caution for buckets. Will need tenders to keep well full.
Drop Point	DP-10	43° 28.165' N	122° 44.729' W		
Drop Point	DP-12	43° 29.197' N	122° 43.889' W		Drop Point 62. ARCH cleared by REAF King 7/23/24. Surveyed in 2023. In existing storage lot.
Drop Point	DP-20	43° 27.934' N	122° 43.499' W		New Drop point
Drop Point	DP-25	43° 27.859' N	122° 41.600' W		New Drop point
Drop Point	DP-30	43° 32.720' N	122° 33.683' W		
Drop Point	DP-4	43° 25.093' N	122° 43.485' W		Recommended DP
Drop Point	DP-42	43° 21.914' N	122° 41.615' W		
Drop Point	DP-45	43° 22.843' N	122° 38.075' W		Recommend DP
Drop Point	DP-5	43° 25.913' N	122° 43.834' W		
Drop Point	DP-50	43° 24.843' N	122° 35.243' W		Please add drop point here
Drop Point	DP-6	43° 26.112' N	122° 42.888' W		Please assign #
Drop Point	DP-60	43° 23.587' N	122° 30.422' W		Has good cell service and parking
Drop Point	DP-7	43° 26.766' N	122° 40.493' W		Hand line start point for tender/hose/pump
Drop Point	DP-8	43° 27.345' N	122° 45.842' W		Recommend DP location
Helispot	H1	43° 22.362' N	122° 38.431' W		
Helispot	H5	43° 23.570' N	122° 41.307' W		
Helispot	H50	43° 25.013' N	122° 35.281' W		
Helispot	H55	43° 26.238' N	122° 36.109' W		
Incident Command Post	Strader Ranch	43° 18.646' N	123° 04.642' W		373 French Creek Rd, Glide, OR
Restricted Water Source	Restricted Water Source	43° 22.717' N	122° 33.677' W		Beaver pond per REEDs