

# Air Operations

## Battle Mountain Complex

### OR973S-000250

#### 7/31/2024 Day

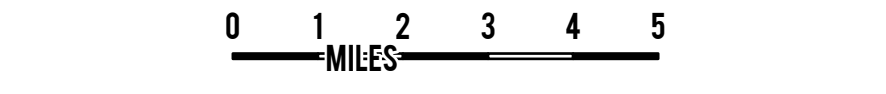
178,171 acres at 07/29/2024 0000 hrs

Incident Name	Acres
NF Owens	4,484
Monkey Creek	173,687
Courtrock	19,282

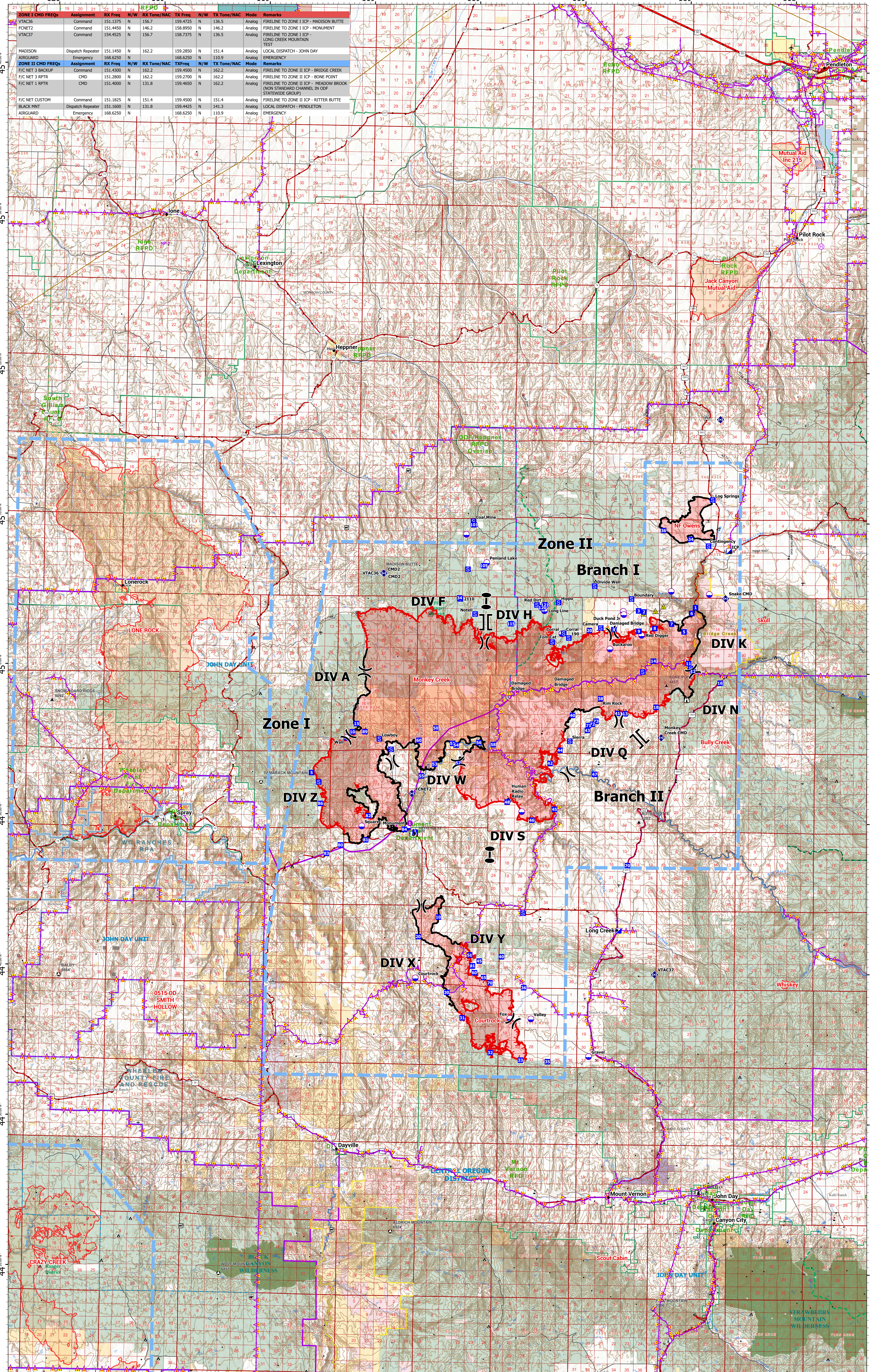
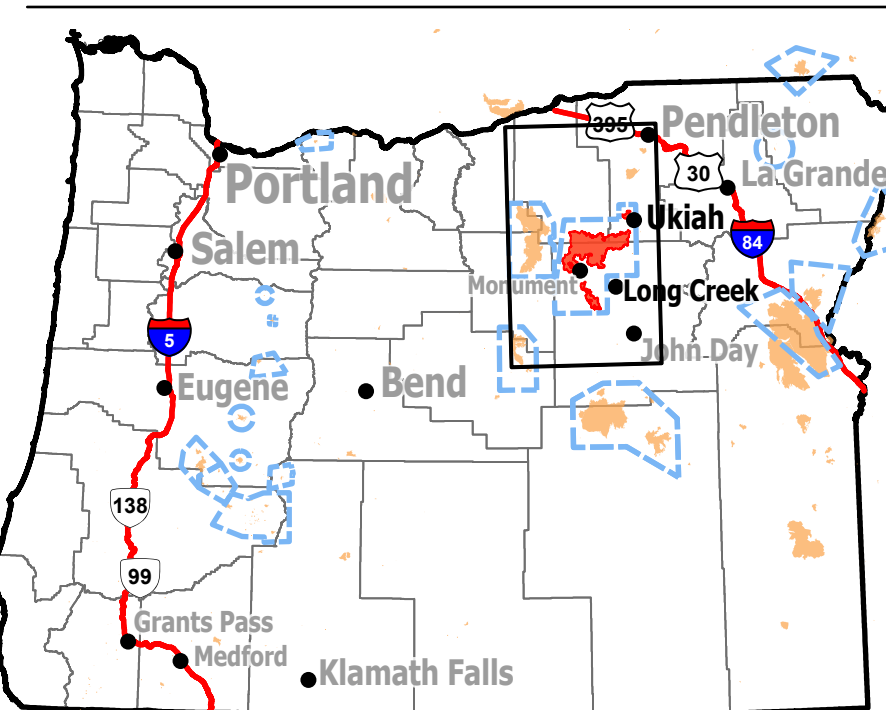


### INCIDENT MANAGEMENT TEAM

1:143,000 | ODF Team 3 GISB | 07/30/2024 2228  
Acres from IR and GPS  
North American 1983 Datum, Lat,Long Grid



### Air Operations Vicinity



ZONE I Frequencies	RX	TX
A/A TR Entry	119.850	
A/A Fixed Wing - Zone I	120.650	
A/A Rotor (Primary)	125.350	
A/G 1 - Zone I	168.3750	
A/G 2 - Zone I	169.9875	
Deck	168.3500	
A/G IA-White Net	151.310	TX/RX T 156.7
A/G IA-Blue Net	159.2625	TX/RX T 156.7
A/G IA-44	167.625	167.375
MEDEVAC - VMED 29	155.3475	TX/RX T 156.7

ZONE II Frequencies	AM	FM
A/A TR Entry	119.8500	
A/A Rotor (Primary)	125.3500	
A/A Rotor (Secondary)	126.2500	
A/A Fixed Wing - Zone II	121.2500	
A/G 1 - Zone II		TX/RX
A/G 2 - Zone II		TX/RX
MEDEVAC - VMED 29		TX/RX T 156.7
Deck		163.1000



- ### LEGEND
- Fire Perimeter
  - Neighboring Fires
  - Temporary Flight Restriction
  - Aerial Hazard
  - Helispot
  - Helibase
  - Division Break
  - Branch Break
  - Zone Break
  - Incident Command Post
  - Drop Point
  - Camp
  - Staging Area
  - Hot Spot - Spot Fire
  - Repeater
  - Safety Zone
  - Hazard Site
  - Dip Site

#### Battle Mountain Complex Waypoints

Waypoint Name	Lat	Long	Altitude
Camp	40° 48.250' N	119° 52.217' W	
Drop Site 01	40° 48.250' N	119° 52.217' W	
Drop Site 02	40° 48.250' N	119° 52.217' W	
Drop Site 03	40° 48.250' N	119° 52.217' W	
Drop Site 04	40° 48.250' N	119° 52.217' W	
Drop Site 05	40° 48.250' N	119° 52.217' W	
Drop Site 06	40° 48.250' N	119° 52.217' W	
Drop Site 07	40° 48.250' N	119° 52.217' W	
Drop Site 08	40° 48.250' N	119° 52.217' W	
Drop Site 09	40° 48.250' N	119° 52.217' W	
Drop Site 10	40° 48.250' N	119° 52.217' W	
Drop Site 11	40° 48.250' N	119° 52.217' W	
Drop Site 12	40° 48.250' N	119° 52.217' W	
Drop Site 13	40° 48.250' N	119° 52.217' W	
Drop Site 14	40° 48.250' N	119° 52.217' W	
Drop Site 15	40° 48.250' N	119° 52.217' W	
Drop Site 16	40° 48.250' N	119° 52.217' W	
Drop Site 17	40° 48.250' N	119° 52.217' W	
Drop Site 18	40° 48.250' N	119° 52.217' W	
Drop Site 19	40° 48.250' N	119° 52.217' W	
Drop Site 20	40° 48.250' N	119° 52.217' W	
Drop Site 21	40° 48.250' N	119° 52.217' W	
Drop Site 22	40° 48.250' N	119° 52.217' W	
Drop Site 23	40° 48.250' N	119° 52.217' W	
Drop Site 24	40° 48.250' N	119° 52.217' W	
Drop Site 25	40° 48.250' N	119° 52.217' W	
Drop Site 26	40° 48.250' N	119° 52.217' W	
Drop Site 27	40° 48.250' N	119° 52.217' W	
Drop Site 28	40° 48.250' N	119° 52.217' W	
Drop Site 29	40° 48.250' N	119° 52.217' W	
Drop Site 30	40° 48.250' N	119° 52.217' W	
Drop Site 31	40° 48.250' N	119° 52.217' W	
Drop Site 32	40° 48.250' N	119° 52.217' W	
Drop Site 33	40° 48.250' N	119° 52.217' W	
Drop Site 34	40° 48.250' N	119° 52.217' W	
Drop Site 35	40° 48.250' N	119° 52.217' W	
Drop Site 36	40° 48.250' N	119° 52.217' W	
Drop Site 37	40° 48.250' N	119° 52.217' W	
Drop Site 38	40° 48.250' N	119° 52.217' W	
Drop Site 39	40° 48.250' N	119° 52.217' W	
Drop Site 40	40° 48.250' N	119° 52.217' W	
Drop Site 41	40° 48.250' N	119° 52.217' W	
Drop Site 42	40° 48.250' N	119° 52.217' W	
Drop Site 43	40° 48.250' N	119° 52.217' W	
Drop Site 44	40° 48.250' N	119° 52.217' W	
Drop Site 45	40° 48.250' N	119° 52.217' W	
Drop Site 46	40° 48.250' N	119° 52.217' W	
Drop Site 47	40° 48.250' N	119° 52.217' W	
Drop Site 48	40° 48.250' N	119° 52.217' W	
Drop Site 49	40° 48.250' N	119° 52.217' W	
Drop Site 50	40° 48.250' N	119° 52.217' W	
Drop Site 51	40° 48.250' N	119° 52.217' W	
Drop Site 52	40° 48.250' N	119° 52.217' W	
Drop Site 53	40° 48.250' N	119° 52.217' W	
Drop Site 54	40° 48.250' N	119° 52.217' W	
Drop Site 55	40° 48.250' N	119° 52.217' W	
Drop Site 56	40° 48.250' N	119° 52.217' W	
Drop Site 57	40° 48.250' N	119° 52.217' W	
Drop Site 58	40° 48.250' N	119° 52.217' W	
Drop Site 59	40° 48.250' N	119° 52.217' W	
Drop Site 60	40° 48.250' N	119° 52.217' W	
Drop Site 61	40° 48.250' N	119° 52.217' W	
Drop Site 62	40° 48.250' N	119° 52.217' W	
Drop Site 63	40° 48.250' N	119° 52.217' W	
Drop Site 64	40° 48.250' N	119° 52.217' W	
Drop Site 65	40° 48.250' N	119° 52.217' W	
Drop Site 66	40° 48.250' N	119° 52.217' W	
Drop Site 67	40° 48.250' N	119° 52.217' W	
Drop Site 68	40° 48.250' N	119° 52.217' W	
Drop Site 69	40° 48.250' N	119° 52.217' W	
Drop Site 70	40° 48.250' N	119° 52.217' W	
Drop Site 71	40° 48.250' N	119° 52.217' W	
Drop Site 72	40° 48.250' N	119° 52.217' W	
Drop Site 73	40° 48.250' N	119° 52.217' W	
Drop Site 74	40° 48.250' N	119° 52.217' W	
Drop Site 75	40° 48.250' N	119° 52.217' W	
Drop Site 76	40° 48.250' N	119° 52.217' W	
Drop Site 77	40° 48.250' N	119° 52.217' W	
Drop Site 78	40° 48.250' N	119° 52.217' W	
Drop Site 79	40° 48.250' N	119° 52.217' W	
Drop Site 80	40° 48.250' N	119° 52.217' W	
Drop Site 81	40° 48.250' N	119° 52.217' W	
Drop Site 82	40° 48.250' N	119° 52.217' W	
Drop Site 83	40° 48.250' N	119° 52.217' W	
Drop Site 84	40° 48.250' N	119° 52.217' W	
Drop Site 85	40° 48.250' N	119° 52.217' W	
Drop Site 86	40° 48.250' N	119° 52.217' W	
Drop Site 87	40° 48.250' N	119° 52.217' W	
Drop Site 88	40° 48.250' N	119° 52.217' W	
Drop Site 89	40° 48.250' N	119° 52.217' W	
Drop Site 90	40° 48.250' N	119° 52.217' W	
Drop Site 91	40° 48.250' N	119° 52.217' W	
Drop Site 92	40° 48.250' N	119° 52.217' W	
Drop Site 93	40° 48.250' N	119° 52.217' W	
Drop Site 94	40° 48.250' N	119° 52.217' W	
Drop Site 95	40° 48.250' N	119° 52.217' W	
Drop Site 96	40° 48.250' N	119° 52.217' W	
Drop Site 97	40° 48.250' N	119° 52.217' W	
Drop Site 98	40° 48.250' N	119° 52.217' W	
Drop Site 99	40° 48.250' N	119° 52.217' W	
Drop Site 100	40° 48.250' N	119° 52.217' W	