

Pilot Durkee

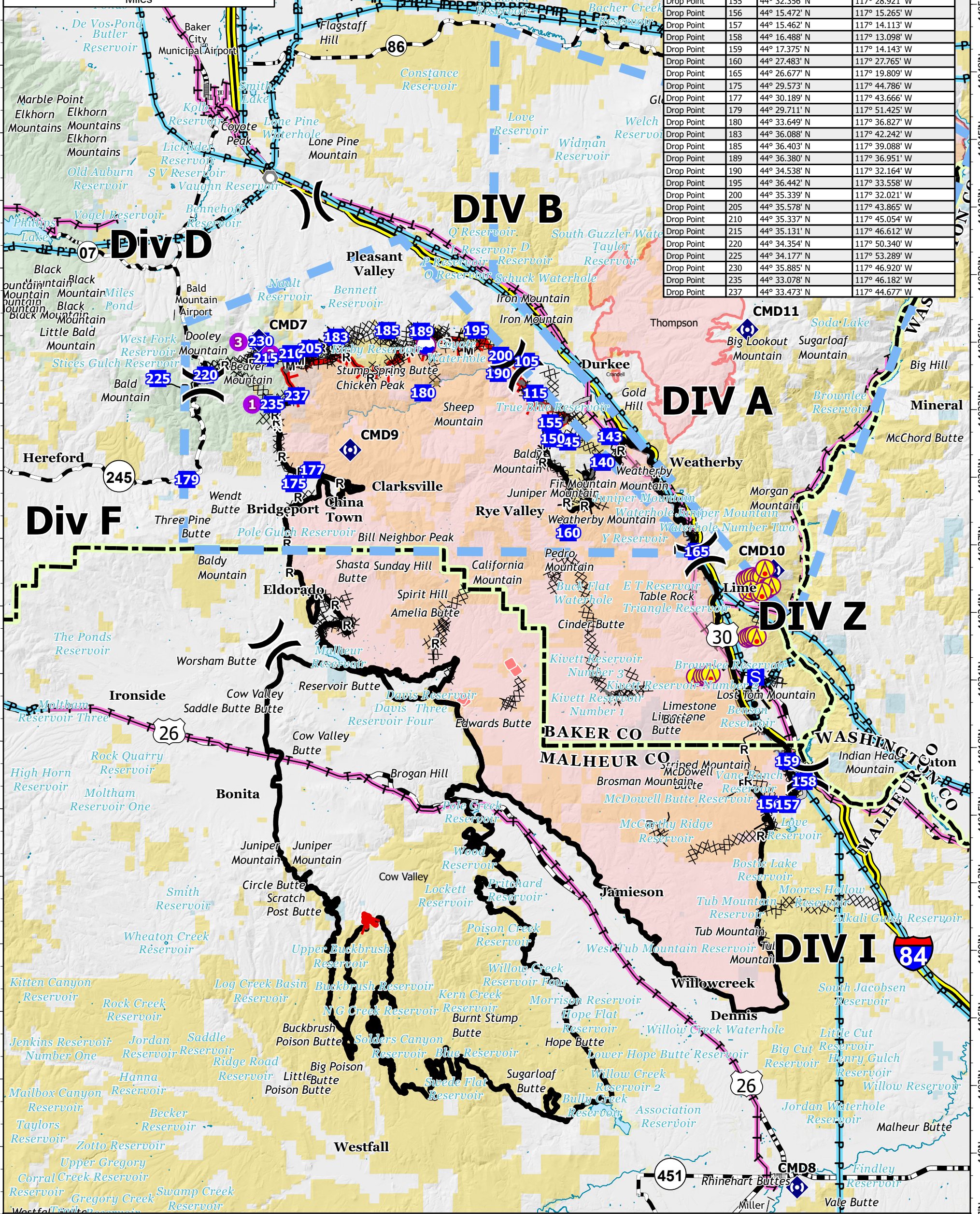
OR-VAD-240141

08/04/2024

294,690 acres at 08/03/2024 0638 PDT

1:300,000 | SA Gold Team | 8/3/2024 1945
Acres from IR and field data
North American 1983 Datum, Lat/Long Grid

FC Point Type	Label	Latitude WGS84 DDM	Longitude WGS84 DDM
Repeater	CMD10	44° 25.844' N	117° 15.023' W
Repeater	CMD11	44° 36.530' N	117° 16.699' W
Repeater	CMD7	44° 35.930' N	117° 47.041' W
Repeater	CMD8	43° 58.463' N	117° 13.463' W
Repeater	CMD9	44° 31.091' N	117° 41.309' W
Helispot	1	44° 33.078' N	117° 46.219' W
Helispot	2	44° 35.344' N	117° 45.053' W
Helispot	3	44° 35.929' N	117° 46.977' W
Drop Point	105	44° 35.080' N	117° 30.412' W
Drop Point	115	44° 33.666' N	117° 29.876' W
Drop Point	140	44° 30.620' N	117° 25.670' W
Drop Point	143	44° 31.763' N	117° 25.212' W
Drop Point	145	44° 31.514' N	117° 27.821' W
Drop Point	150	44° 31.652' N	117° 28.744' W
Drop Point	155	44° 32.356' N	117° 28.921' W
Drop Point	156	44° 15.472' N	117° 15.265' W
Drop Point	157	44° 15.462' N	117° 14.113' W
Drop Point	158	44° 16.488' N	117° 28.876' W
Drop Point	159	44° 17.375' N	117° 14.143' W
Drop Point	160	44° 27.483' N	117° 27.765' W
Drop Point	165	44° 26.677' N	117° 19.809' W
Drop Point	175	44° 29.573' N	117° 44.786' W
Drop Point	177	44° 30.189' N	117° 43.666' W
Drop Point	179	44° 29.711' N	117° 51.425' W
Drop Point	180	44° 33.649' N	117° 36.827' W
Drop Point	183	44° 36.088' N	117° 42.242' W
Drop Point	185	44° 36.403' N	117° 39.088' W
Drop Point	189	44° 36.380' N	117° 36.951' W
Drop Point	190	44° 34.538' N	117° 32.164' W
Drop Point	195	44° 36.442' N	117° 33.558' W
Drop Point	200	44° 35.339' N	117° 32.021' W
Drop Point	205	44° 35.578' N	117° 43.865' W
Drop Point	210	44° 35.337' N	117° 45.054' W
Drop Point	215	44° 35.131' N	117° 46.612' W
Drop Point	220	44° 34.354' N	117° 50.340' W
Drop Point	225	44° 34.177' N	117° 53.289' W
Drop Point	230	44° 35.885' N	117° 46.920' W
Drop Point	235	44° 33.078' N	117° 46.182' W
Drop Point	237	44° 33.473' N	117° 44.677' W



Aerial Hazard	Staging Area	Dip Site	Completed Fuel Break	Completed Mixed Construction Line	Other	Transmission Lines	Wildfire Daily Fire Perimeter
Helispot	Lookout	Completed Burnout	Completed Hand Line	Completed Road as Line	Repair Line	Powerlines	Contained
Division Break	Landmark	Completed Dozer Line	Access Route	Retardant Drop	Temporary Flight Restriction	Uncontained	County
Drop Point	Repeater						