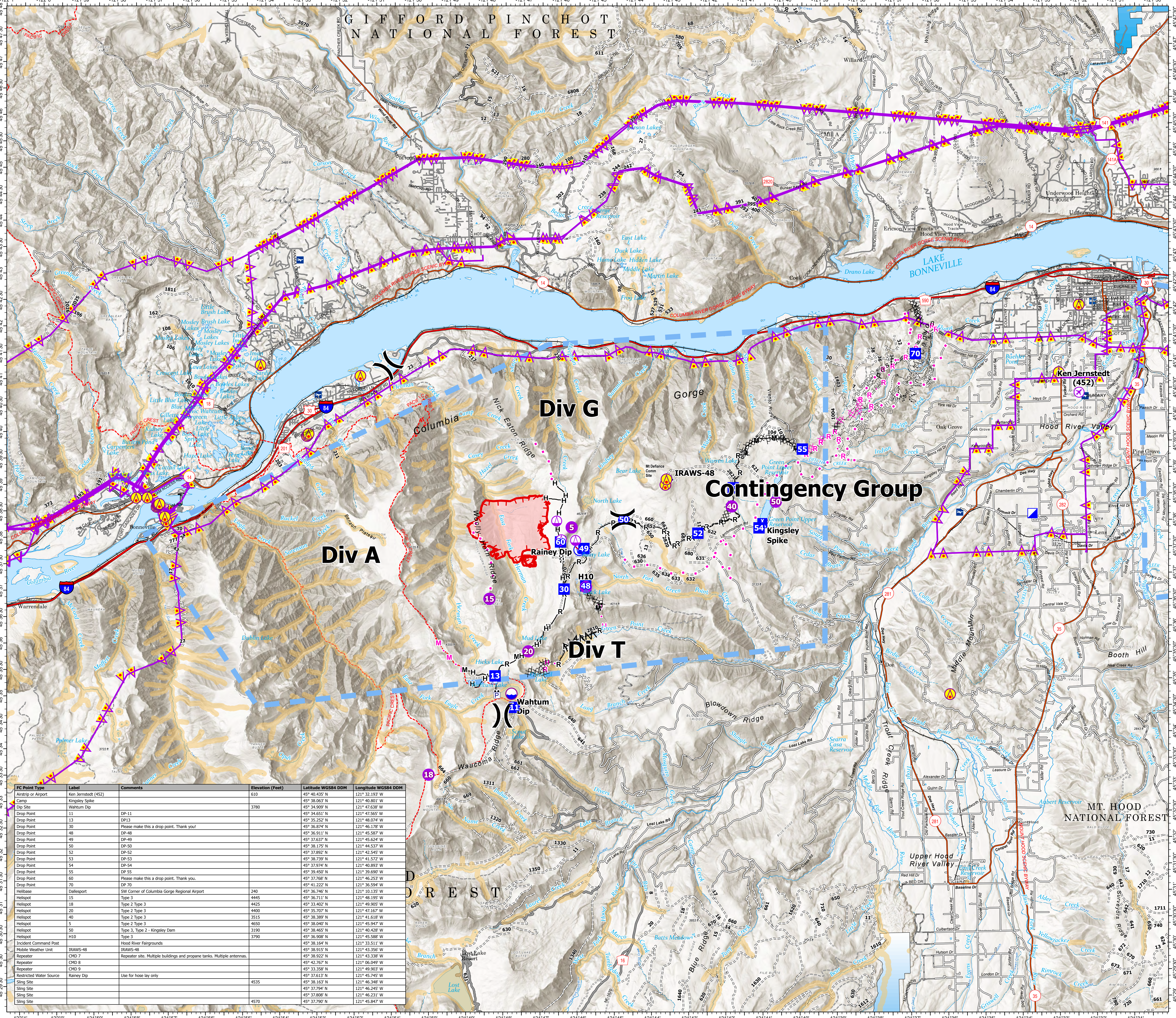


Air Operations
 Whisky Creek
 OR-MHF-000639
 08/05/2024 Day
 1,174 acres
 at 8/04/2024 16:39 Hrs



- Other Property
- Pump
- Water Tank
- Aerial Hazard
- Airstrip or Airport
- Helispot
- Sling Site
- Division Break
- Incident Command Post
- Drop Point
- Camp
- Mobile Weather Unit
- Dip Site
- Restricted Water Source
- Completed Dozer Line
- Completed Fuel Break
- Completed Hand Line
- Completed Mixed Construction Line
- Completed Road as Line
- Planned Dozer Line
- Planned Hand Line
- Planned Mixed Construction Line
- Planned Road as Line
- Proposed Line
- Aerial Hazard
- Temporary Flight Restriction
- Uncontained
- Wildfire Daily Fire Perimeter
- Retardant Avoidance Areas



FC Point Type	Label	Comments	Elevation (Feet)	Latitude WGS84 DDM	Longitude WGS84 DDM
Airstrip or Airport	Ken Jernstedt (452)		610	45° 40.435' N	121° 32.193' W
Camp	Kingsley Spike		3780	45° 38.963' N	121° 40.801' W
Dip Site	Wahtum Dip			45° 34.909' N	121° 47.638' W
Drop Point	11	DP-11		45° 34.651' N	121° 47.565' W
Drop Point	13	DP13		45° 35.252' N	121° 48.074' W
Drop Point	30			45° 36.874' N	121° 46.178' W
Drop Point	48	DP-48	Please make this a drop point. Thank you!	45° 36.911' N	121° 45.587' W
Drop Point	49	DP-49		45° 37.637' N	121° 45.534' W
Drop Point	50	DP-50		45° 38.175' N	121° 44.517' W
Drop Point	52	DP-52		45° 37.892' N	121° 42.545' W
Drop Point	53	DP-53		45° 38.739' N	121° 41.572' W
Drop Point	54	DP-54		45° 37.974' N	121° 40.893' W
Drop Point	55	DP 55		45° 39.450' N	121° 39.690' W
Drop Point	60			45° 37.608' N	121° 46.253' W
Drop Point	70	DP 70	Please make this a drop point. Thank you.	45° 41.222' N	121° 36.594' W
Helibase	Dallesport	SW Corner of Columbia Gorge Regional Airport	240	45° 36.746' N	121° 10.135' W
Helispot	15	Type 3	4445	45° 36.711' N	121° 48.195' W
Helispot	18	Type 2 Type 3	4425	45° 33.402' N	121° 49.905' W
Helispot	20	Type 2 Type 3	4400	45° 35.707' N	121° 47.167' W
Helispot	40	Type 2 Type 3	3515	45° 38.389' N	121° 41.618' W
Helispot	5	Type 2 Type 3	4650	45° 38.040' N	121° 45.947' W
Helispot	50	Type 3, Type 2 - Kingsley Dam	3190	45° 38.465' N	121° 40.428' W
Helispot	H10	Type 3	3790	45° 36.908' N	121° 45.588' W
Incident Command Post		Hood River Fairgrounds		45° 38.164' N	121° 33.511' W
Mobile Weather Unit	IRAWS-48			45° 38.915' N	121° 43.356' W
Repeater	CHD 7	Repeater site. Multiple buildings and propane tanks. Multiple antennas.		45° 38.922' N	121° 43.338' W
Repeater	CHD 8			45° 42.767' N	121° 06.049' W
Repeater	CHD 9			45° 33.358' N	121° 49.903' W
Restricted Water Source	Rainey Dip	Use for hose lay only		45° 37.613' N	121° 45.745' W
Sling Site			4535	45° 38.163' N	121° 46.348' W
Sling Site				45° 37.794' N	121° 46.245' W
Sling Site				45° 37.608' N	121° 46.211' W
Sling Site			4570	45° 37.790' N	121° 45.847' W