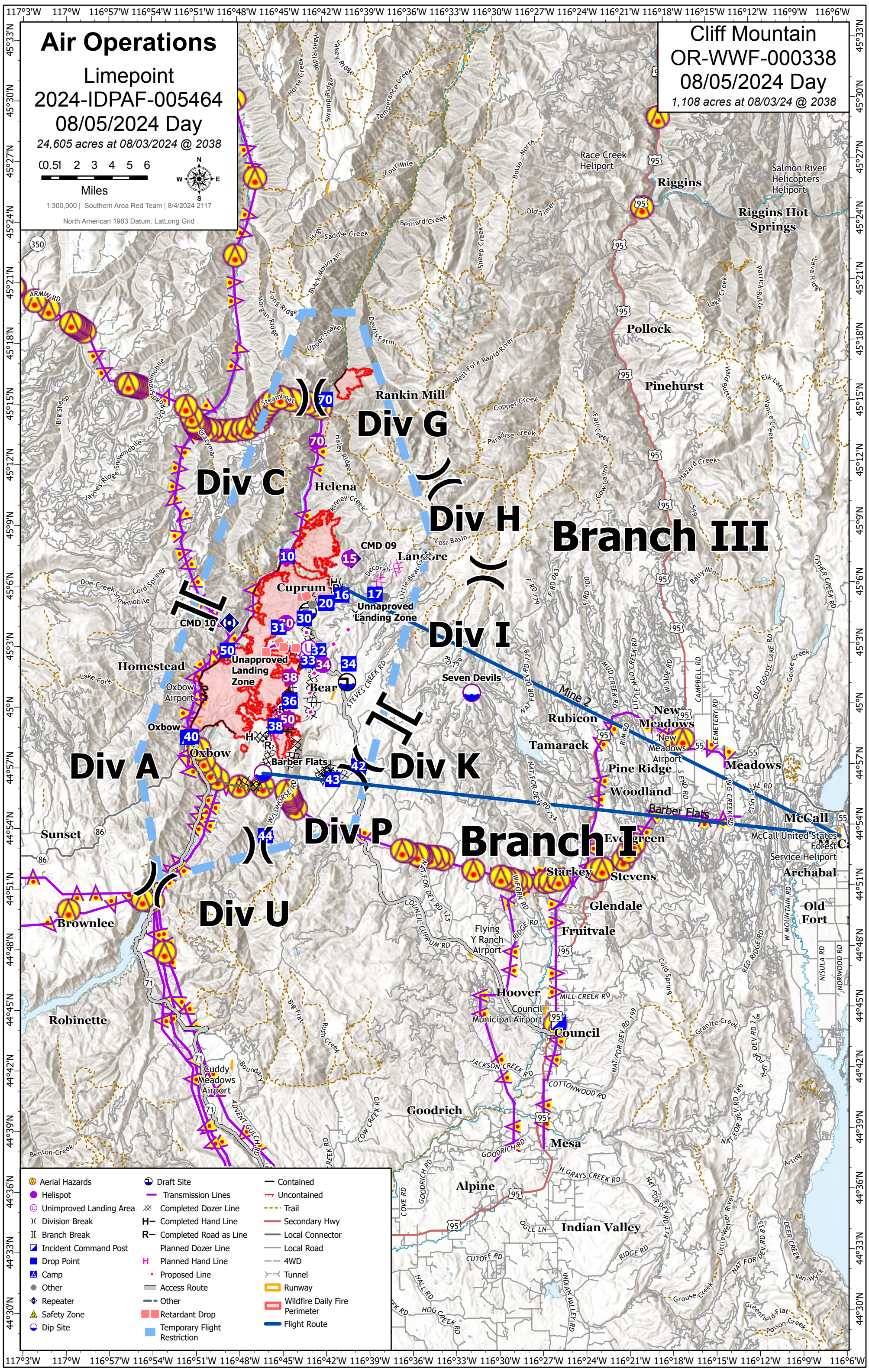


Air Operations

Limepoint
 2024-IDPAF-005464
 08/05/2024 Day
 24,605 acres at 08/03/2024 @ 2038



Cliff Mountain
 OR-WWF-000338
 08/05/2024 Day
 1,108 acres at 08/03/24 @ 2038



Aerial Hazards	Draft Site	Contained
Helispot	Transmission Lines	Uncontained
Unimproved Landing Area	Completed Dozer Line	Trail
Division Break	Completed Hand Line	Secondary Hwy
Branch Break	Completed Road as Line	Local Connector
Incident Command Post	Planned Dozer Line	Local Road
Drop Point	Planned Hand Line	4WD
Camp	Proposed Line	Tunnel
Other	Access Route	Runway
Repeater	Other	Wildfire Daily Fire Perimeter
Safety Zone	Retardant Drop	Flight Route
Dip Site	Temporary Flight Restriction	

FeatureCategory	Label	Elevation (ft)	Latitude	Longitude
Camp	Oxbow	1728	44° 58.502' N	116° 51.543' W
Dip Site	Barber Flats	4236	44° 56.716' N	116° 46.283' W
Dip Site	Seven Devils	6197	45° 00.659' N	116° 31.699' W
Draft Site		4075	45° 04.703' N	116° 43.128' W
Draft Site		4340	45° 01.213' N	116° 40.402' W
Drop Point	10	1704	45° 07.439' N	116° 44.545' W
Drop Point	16	4411	45° 05.531' N	116° 40.740' W
Drop Point	17	5729	45° 05.556' N	116° 38.423' W
Drop Point	19	4243	45° 05.139' N	116° 41.794' W
Drop Point	20	4231	45° 05.125' N	116° 41.866' W
Drop Point	30	4154	45° 04.381' N	116° 43.367' W
Drop Point	31	3961	45° 03.940' N	116° 45.161' W
Drop Point	32	5022	45° 02.768' N	116° 42.373' W
Drop Point	33	5035	45° 02.291' N	116° 43.093' W
Drop Point	34	4439	45° 02.118' N	116° 40.267' W
Drop Point	35	4734	45° 00.307' N	116° 44.391' W
Drop Point	36	4729	45° 00.287' N	116° 44.410' W
Drop Point	38	4649	44° 59.055' N	116° 45.398' W
Drop Point	40	1711	44° 58.545' N	116° 51.280' W
Drop Point	42	4255	44° 57.060' N	116° 39.615' W
Drop Point	43	4457	44° 56.400' N	116° 41.427' W
Drop Point	44	2890	44° 53.635' N	116° 46.119' W
Drop Point	50	1716	45° 02.808' N	116° 48.757' W
Drop Point	70	1576	45° 15.209' N	116° 41.846' W
Helispot	10	1704	45° 07.431' N	116° 44.552' W
Helispot	15	6890	45° 07.333' N	116° 40.188' W
Helispot	30	4036	45° 04.147' N	116° 44.637' W
Helispot	34	4903	45° 02.080' N	116° 42.067' W
Helispot	38	4828	45° 01.474' N	116° 44.368' W
Helispot	50	4715	44° 59.395' N	116° 44.554' W
Helispot	70	1703	45° 13.136' N	116° 42.446' W
Incident Command Post		3005	44° 44.331' N	116° 25.797' W
Lookout	Boulder Creek	4045	45° 02.691' N	116° 46.452' W
Other		4077	45° 04.686' N	116° 43.277' W
Other		4226	45° 05.043' N	116° 42.808' W
Other	Unapproved Landing Zone	1694	45° 02.816' N	116° 48.800' W
Other	Unapproved Landing Zone	5226	45° 05.440' N	116° 37.676' W
Repeater	CMD 09	6812	45° 07.329' N	116° 40.059' W
Repeater	CMD 10	3151	45° 04.167' N	116° 48.600' W
Safety Zone		4734	45° 00.331' N	116° 44.381' W
Unimproved Landing Area		4971	45° 02.505' N	116° 43.154' W
Unimproved Landing Area		5044	45° 02.921' N	116° 43.049' W