

North Air Operations

Ore (OR-WIF-240195),
Pyramid (OR-WIF-240210),
Slate (OR-WIF-240255)
8/6/2024



0 2 4 Miles

1:80,000 | RM CIMT 1 | 8/5/2024 2047
Acres from GPS Acres from Various Sources
North American 1983 Datum, Lat/Long Grid

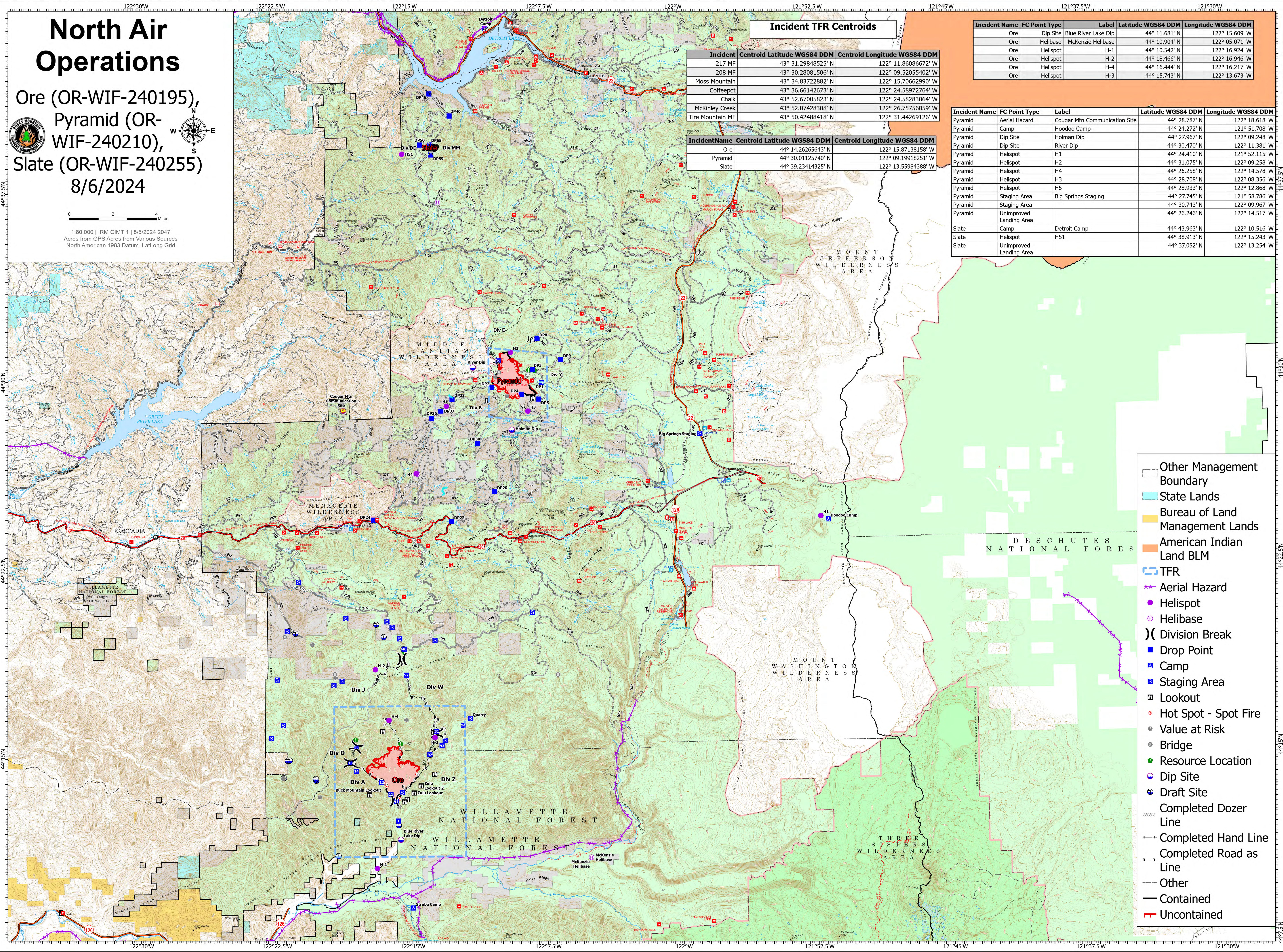
Incident TFR Centroids

Incident	Centroid Latitude WGS84 DDM	Centroid Longitude WGS84 DDM
217 MF	43° 31.29848525' N	122° 11.86086672' W
208 MF	43° 30.28081506' N	122° 09.52055402' W
Moss Mountain	43° 34.83722882' N	122° 15.70662990' W
Coffeepot	43° 36.66142673' N	122° 24.58972764' W
Chalk	43° 52.67005823' N	122° 24.58283064' W
McKinley Creek	43° 52.07428308' N	122° 26.75756059' W
Tire Mountain MF	43° 50.42488418' N	122° 31.44269126' W

IncidentName	Centroid Latitude WGS84 DDM	Centroid Longitude WGS84 DDM
Ore	44° 14.26265643' N	122° 15.87138158' W
Pyramid	44° 30.01125740' N	122° 09.19918251' W
Slate	44° 39.23414325' N	122° 13.55984388' W

Incident Name	FC Point Type	Label	Latitude WGS84 DDM	Longitude WGS84 DDM
Ore	Dip Site	Blue River Lake Dip	44° 11.681' N	122° 15.609' W
Ore	Helibase	McKenzie Helibase	44° 10.904' N	122° 05.071' W
Ore	Helispot	H-1	44° 10.542' N	122° 16.924' W
Ore	Helispot	H-2	44° 18.466' N	122° 16.946' W
Ore	Helispot	H-4	44° 16.444' N	122° 16.217' W
Ore	Helispot	H-3	44° 15.743' N	122° 13.673' W

Incident Name	FC Point Type	Label	Latitude WGS84 DDM	Longitude WGS84 DDM
Pyramid	Aerial Hazard	Cougar Mtn Communication Site	44° 28.787' N	122° 18.618' W
Pyramid	Camp	Hoodoo Camp	44° 24.272' N	121° 51.708' W
Pyramid	Dip Site	Holman Dip	44° 27.967' N	122° 09.248' W
Pyramid	Dip Site	River Dip	44° 30.470' N	122° 11.381' W
Pyramid	Helispot	H1	44° 24.410' N	121° 52.115' W
Pyramid	Helispot	H2	44° 31.075' N	122° 09.258' W
Pyramid	Helispot	H4	44° 26.258' N	122° 14.578' W
Pyramid	Helispot	H3	44° 28.708' N	122° 08.356' W
Pyramid	Helispot	H5	44° 28.933' N	122° 12.868' W
Pyramid	Staging Area	Big Springs Staging	44° 27.745' N	121° 58.786' W
Pyramid	Staging Area		44° 30.743' N	122° 09.967' W
Pyramid	Unimproved Landing Area		44° 26.246' N	122° 14.517' W
Slate	Camp	Detroit Camp	44° 43.963' N	122° 10.516' W
Slate	Helispot	H51	44° 38.913' N	122° 15.243' W
Slate	Unimproved Landing Area		44° 37.052' N	122° 13.254' W



- Other Management Boundary
- State Lands
- Bureau of Land Management Lands
- American Indian Land BLM
- ▭ TFR
- ⚡ Aerial Hazard
- Helispot
- ⊕ Helibase
- ⌋ Division Break
- Drop Point
- Camp
- Staging Area
- Lookout
- Hot Spot - Spot Fire
- Value at Risk
- Bridge
- Resource Location
- Dip Site
- Draft Site
- Completed Dozer Line
- Completed Hand Line
- Completed Road as Line
- Other
- Contained
- Uncontained