

# Operations

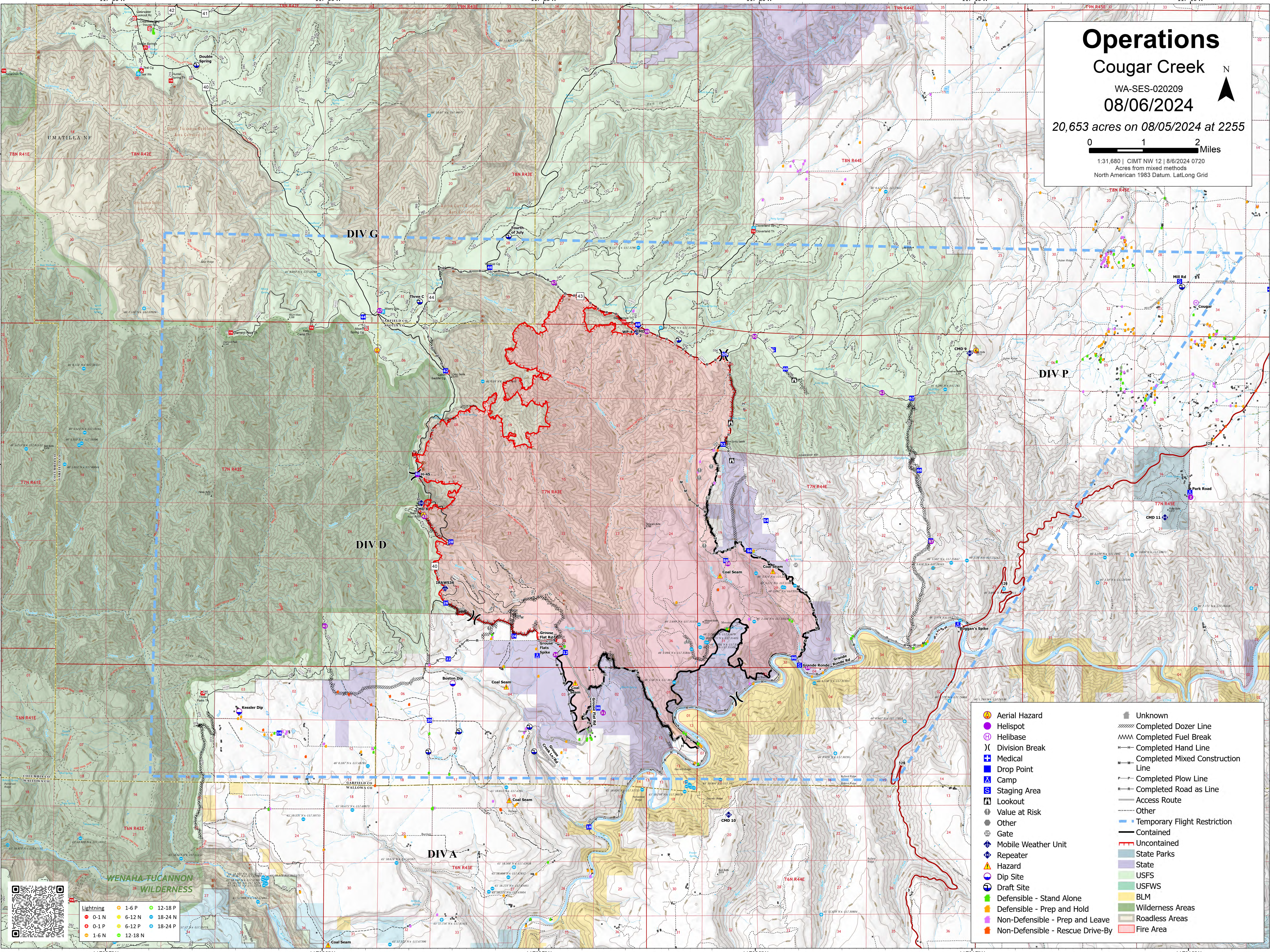
## Cougar Creek

WA-SES-020209  
08/06/2024

20,653 acres on 08/05/2024 at 2255

0 1 2 Miles

1:31,680 | CIMT NW 12 | 8/6/2024 0720  
Acres from mixed methods  
North American 1983 Datum, Lat/Long Grid



- |                                  |                                   |
|----------------------------------|-----------------------------------|
| Aerial Hazard                    | Unknown                           |
| Helispot                         | Completed Dozer Line              |
| Helibase                         | Completed Fuel Break              |
| Division Break                   | Completed Hand Line               |
| Medical                          | Completed Mixed Construction Line |
| Drop Point                       | Completed Plow Line               |
| Camp                             | Completed Road as Line            |
| Staging Area                     | Access Route                      |
| Lookout                          | Other                             |
| Value at Risk                    | Temporary Flight Restriction      |
| Other                            | Contained                         |
| Gate                             | Uncontained                       |
| Mobile Weather Unit              | State Parks                       |
| Repeater                         | State                             |
| Hazard                           | USFS                              |
| Dip Site                         | USFWS                             |
| Draft Site                       | BLM                               |
| Defensible - Stand Alone         | Wilderness Areas                  |
| Defensible - Prep and Hold       | Roadless Areas                    |
| Non-Defensible - Prep and Leave  | Fire Area                         |
| Non-Defensible - Rescue Drive-By |                                   |



Lightning		
0-1 N	1-6 P	12-18 P
0-1 P	6-12 N	18-24 N
1-6 N	6-12 P	18-24 P
1-6 P	12-18 N	

46°10'N

46°5'N

46°0'N

46°55'N

117°35'W

117°30'W

117°25'W

117°20'W

117°10'W