

# Air Ops

Red

OR-DEF-000438

493 acres at 8/5/2024 at 0229 hrs

Round Mountain

OR-DEF-000447

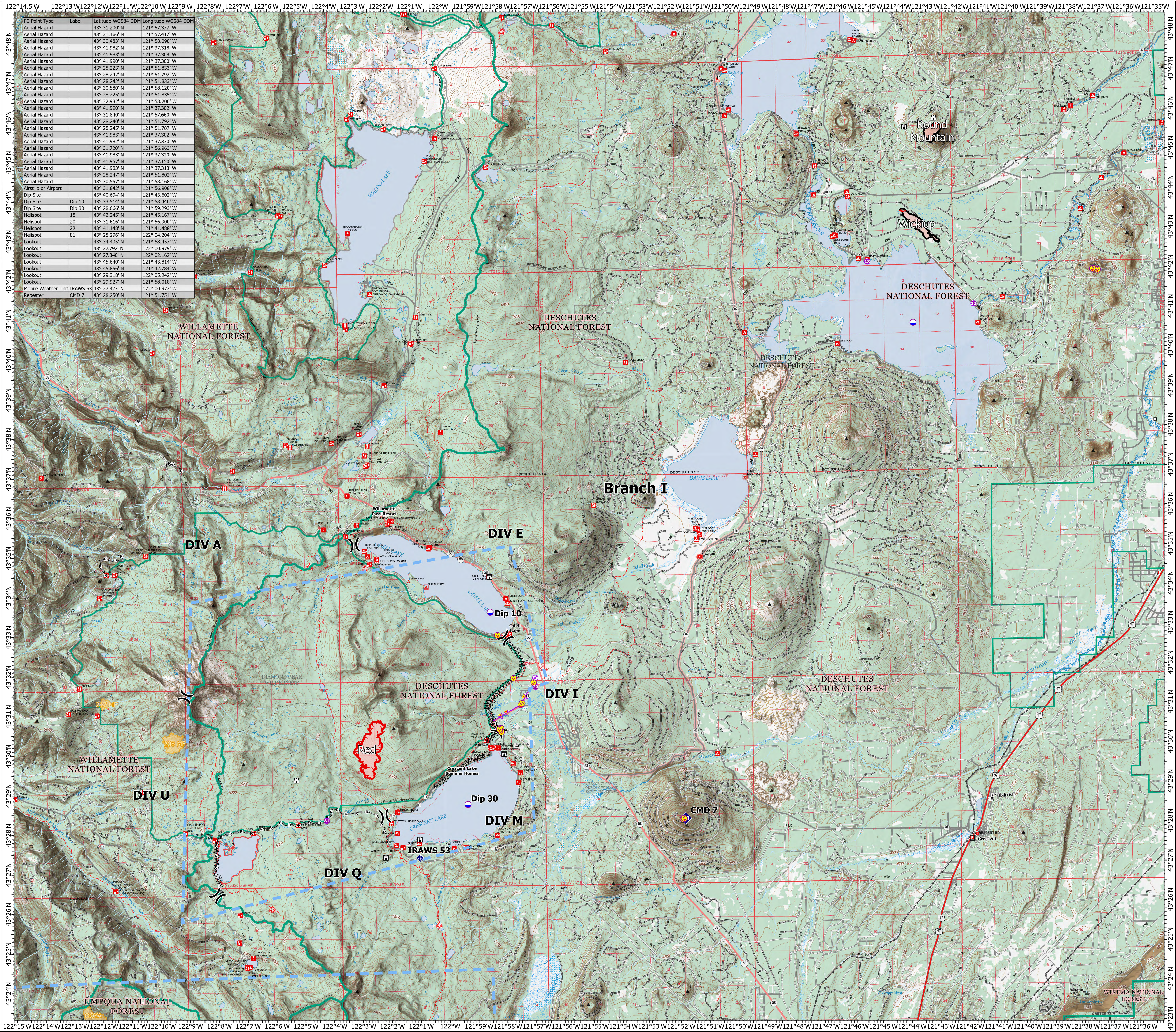
108 acres at 7/26/2024 at 1944 hrs

Wickiup

OR-DEF-000445

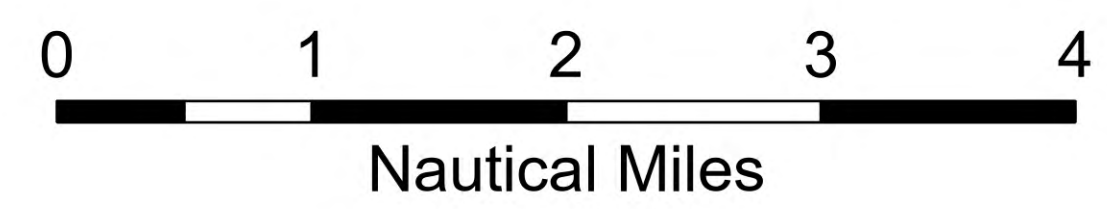
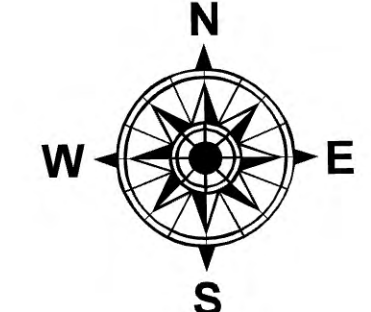
168 acres at 7/26/2024 at 1944 hrs

8/6/2024 Day



FC Point Type	Label	Latitude WGS84 DDM	Longitude WGS84 DDM
Aerial Hazard		43° 31.200' N	121° 57.377' W
Aerial Hazard		43° 31.166' N	121° 57.417' W
Aerial Hazard		43° 30.483' N	121° 58.098' W
Aerial Hazard		43° 41.982' N	121° 37.318' W
Aerial Hazard		43° 41.983' N	121° 37.308' W
Aerial Hazard		43° 41.990' N	121° 37.300' W
Aerial Hazard		43° 28.223' N	121° 51.833' W
Aerial Hazard		43° 28.242' N	121° 51.793' W
Aerial Hazard		43° 28.242' N	121° 51.833' W
Aerial Hazard		43° 30.580' N	121° 58.120' W
Aerial Hazard		43° 28.225' N	121° 51.835' W
Aerial Hazard		43° 32.932' N	121° 58.200' W
Aerial Hazard		43° 41.990' N	121° 37.302' W
Aerial Hazard		43° 31.840' N	121° 57.560' W
Aerial Hazard		43° 28.240' N	121° 51.792' W
Aerial Hazard		43° 28.245' N	121° 51.787' W
Aerial Hazard		43° 41.983' N	121° 37.302' W
Aerial Hazard		43° 41.982' N	121° 37.330' W
Aerial Hazard		43° 31.720' N	121° 56.963' W
Aerial Hazard		43° 41.983' N	121° 37.320' W
Aerial Hazard		43° 41.957' N	121° 37.150' W
Aerial Hazard		43° 41.983' N	121° 37.313' W
Aerial Hazard		43° 28.247' N	121° 51.802' W
Aerial Hazard		43° 30.557' N	121° 58.168' W
Airstrip or Airport		43° 31.842' N	121° 56.908' W
Dip Site		43° 40.694' N	121° 43.602' W
Dip Site	Dip 10	43° 33.514' N	121° 58.440' W
Dip Site	Dip 30	43° 28.666' N	121° 59.293' W
Helispot	18	43° 42.245' N	121° 45.167' W
Helispot	20	43° 31.616' N	121° 56.900' W
Helispot	22	43° 41.988' N	121° 41.468' W
Helispot	81	43° 28.296' N	122° 04.204' W
Lookout		43° 34.405' N	121° 58.457' W
Lookout		43° 27.792' N	122° 00.879' W
Lookout		43° 27.340' N	122° 02.162' W
Lookout		43° 45.640' N	121° 43.814' W
Lookout		43° 45.856' N	121° 43.398' W
Lookout		43° 28.218' N	122° 05.242' W
Lookout		43° 29.927' N	121° 58.018' W
Mobile Weather Unit	IRAWS 53	43° 27.323' N	122° 00.972' W
Repeater	CMD 7	43° 28.250' N	121° 51.751' W

- Wildfire Daily
- ▬ Fire Perimeter
- Nearby Fires
- ▬ State or Territory
- ▬ Forest Service
- ▬ Contained
- ▬ Uncontained
- ▬ Completed Fuel Break
- ▬ Completed Hand Line
- ▬ Completed Road as Line
- ▬ Aerial Hazard
- ▬ Temporary Flight Restriction
- ▬ Power Lines
- Aerial Hazard
- Airstrip or Airport
- Helispot
- x Division Break
- Lookout
- + Mobile Weather Unit
- + Repeater
- + Dip Site
- School
- Fire Station
- Cemetery
- Post Office
- BOATING SITE
- CAMPGROUND
- CAMPING AREA
- DAY USE AREA
- GROUP CAMPGROUND
- HORSE CAMP
- HOTEL, LODGE, RESORT
- INFO SITE/FEE STATION
- INTERPRETIVE SITE
- LOOKOUT/CABIN
- OBSERVATION SITE
- ORGANIZATION SITE
- PICNIC SITE
- TRAILHEAD
- WILDLIFE VIEWING SITE



1:55,000 | EA IMT | 8/5/2024 2138  
 Acres from IR Acres from IR GPS  
 North American 1983 Datum, Lat/Long Grid