

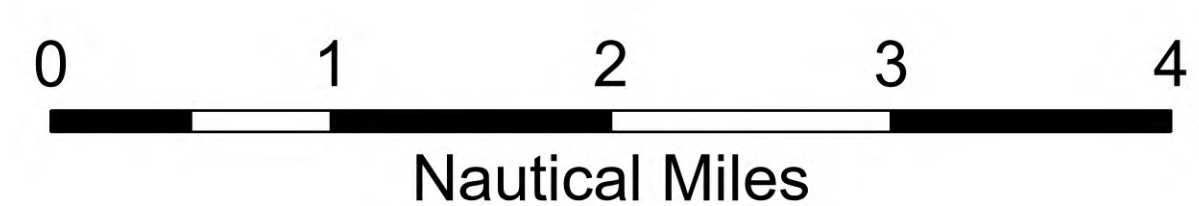
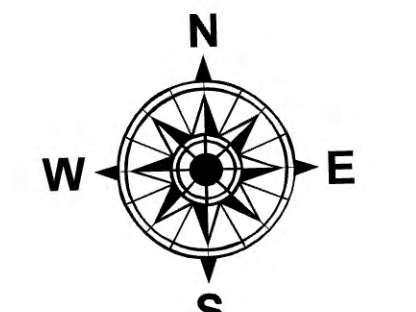
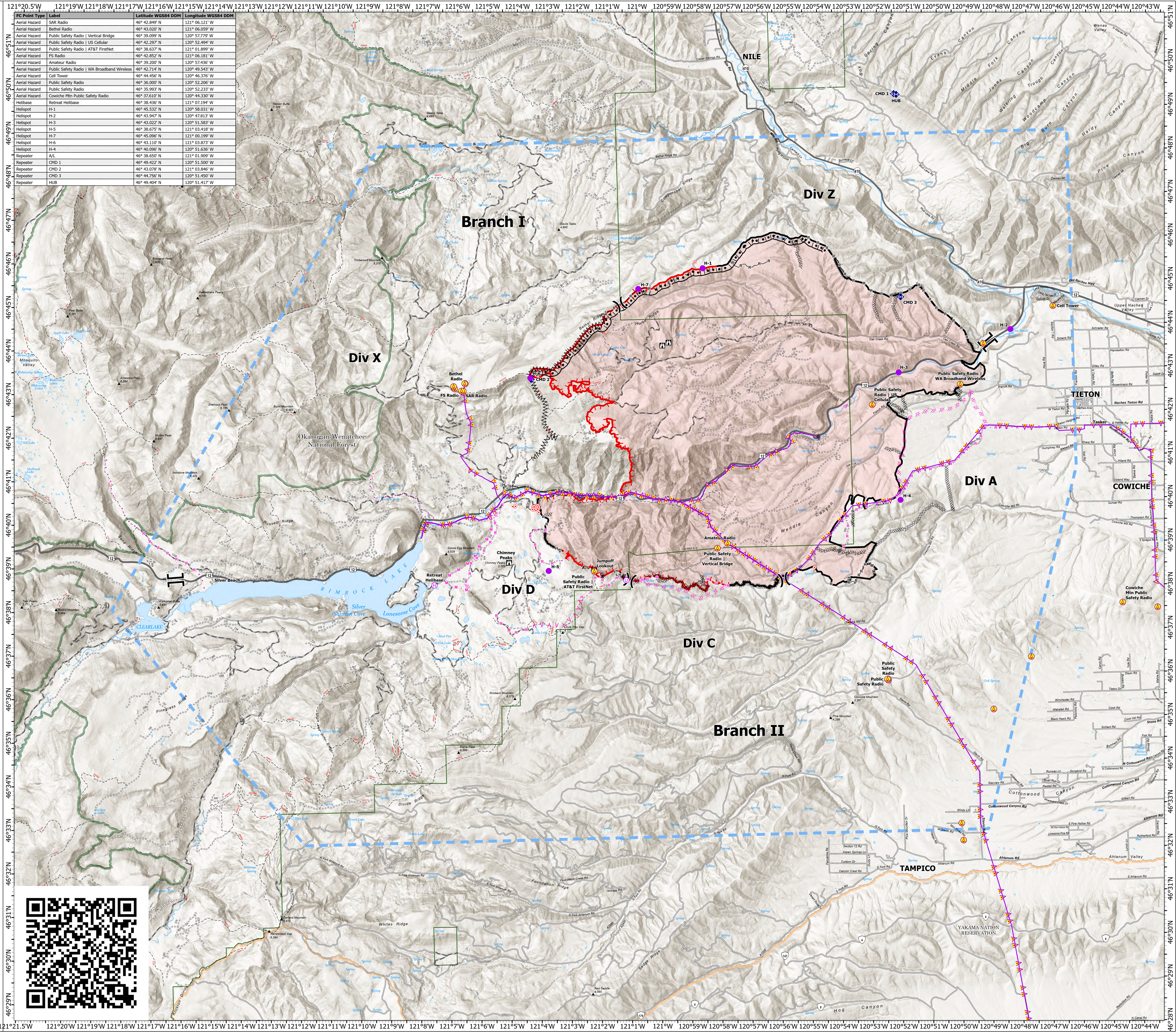
# AirOps

Retreat  
WA-SES-000477  
Aug. 6, 2024 Day

44,540 acres at 20240805 2217hr

- Aerial Hazard
- Helispot
- Helibase
- Unimproved Landing Area
- Division Break
- Branch Break
- Lookout
- Hot Spot - Spot Fire
- Repeater
- Completed Burnout
- Completed Dozer Line
- Completed Fuel Break
- Completed Hand Line
- Completed Mixed Construction Line
- Completed Road as Line
- Planned Dozer Line
- Planned Fuel Break
- Planned Hand Line
- Planned Mixed Construction Line
- Planned Road as Line
- Proposed Line
- Aerial Hazard
- Temporary Flight Restriction
- Contained
- Uncontained
- Other
- Wildfire Daily Fire Perimeter
- Primary Highway
- Secondary Highway
- Road
- Road, Paved
- Road, Dirt/Gravel
- Road, high clearance
- Railroad
- Administrative FS Boundary
- Ranger District Boundary
- FS Wilderness Boundary
- County Boundary

FC Point Type	Label	Latitude WGS84 DDM	Longitude WGS84 DDM
Aerial Hazard	SAR Radio	46° 42.849' N	121° 06.121' W
Aerial Hazard	Bethel Radio	46° 43.020' N	121° 06.059' W
Aerial Hazard	Public Safety Radio   Vertical Bridge	46° 39.999' N	120° 57.799' W
Aerial Hazard	Public Safety Radio   US Cellular	46° 42.297' N	120° 52.994' W
Aerial Hazard	Public Safety Radio   AT&T FirstNet	46° 38.637' N	121° 01.899' W
Aerial Hazard	FS Radio	46° 42.852' N	121° 06.181' W
Aerial Hazard	Amateur Radio	46° 39.200' N	120° 57.436' W
Aerial Hazard	Public Safety Radio   WA Broadband Wireless	46° 42.714' N	120° 49.543' W
Aerial Hazard	Cell Tower	46° 44.450' N	120° 46.376' W
Aerial Hazard	Public Safety Radio	46° 36.000' N	120° 52.206' W
Aerial Hazard	Public Safety Radio	46° 35.993' N	120° 52.233' W
Aerial Hazard	Cowiche Mtn Public Safety Radio	46° 37.610' N	120° 44.330' W
Helibase	Retreat Helibase	46° 38.436' N	121° 07.194' W
Helispot	H-1	46° 45.532' N	120° 58.031' W
Helispot	H-2	46° 43.947' N	120° 47.813' W
Helispot	H-3	46° 43.022' N	120° 51.583' W
Helispot	H-5	46° 38.675' N	121° 03.418' W
Helispot	H-7	46° 45.096' N	121° 00.199' W
Helispot	H-6	46° 43.110' N	121° 03.873' W
Helispot	H-4	46° 40.090' N	120° 51.636' W
Repeater	AUL	46° 38.550' N	121° 01.909' W
Repeater	CMD 1	46° 40.422' N	120° 51.500' W
Repeater	CMD 2	46° 43.078' N	121° 03.846' W
Repeater	CMD 3	46° 44.756' N	120° 51.450' W
Repeater	HUB	46° 40.404' N	120° 51.417' W



1:50,000 | NR1 GISS | 8/6/2024 0511  
Acres from IR  
North American 1983 Datum, Lat/Long Grid

