

Air Ops

Cougar Creek

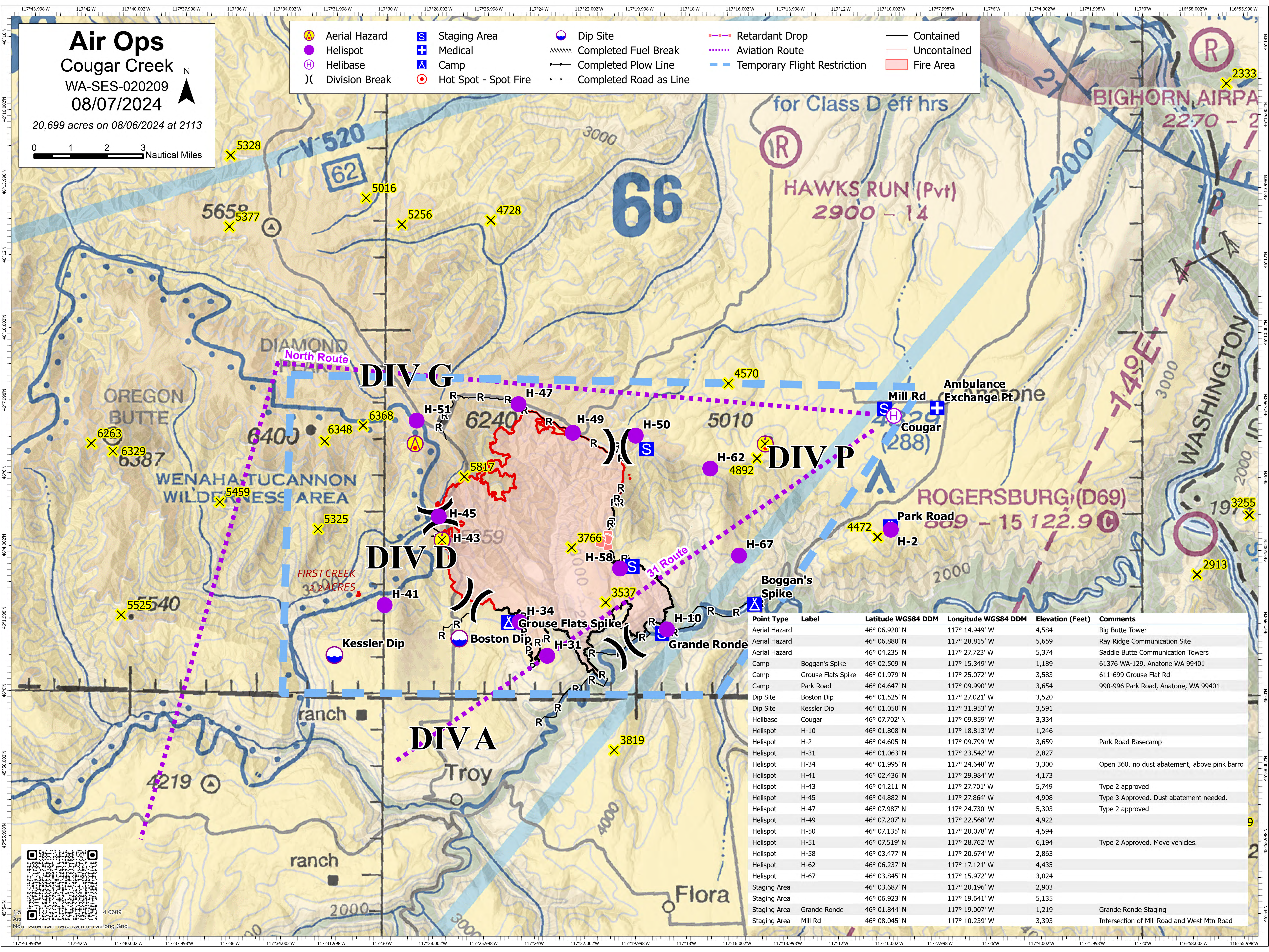
WA-SES-020209

08/07/2024

20,699 acres on 08/06/2024 at 2113

0 1 2 3 Nautical Miles

Aerial Hazard	Staging Area	Dip Site	Retardant Drop	Contained
Helispot	Medical	Completed Fuel Break	Aviation Route	Uncontained
Helibase	Camp	Completed Plow Line	Temporary Flight Restriction	Fire Area
Division Break	Hot Spot - Spot Fire	Completed Road as Line		



Point Type	Label	Latitude WGS84 DDM	Longitude WGS84 DDM	Elevation (Feet)	Comments
Aerial Hazard		46° 06.920' N	117° 14.949' W	4,584	Big Butte Tower
Aerial Hazard		46° 06.880' N	117° 28.815' W	5,659	Ray Ridge Communication Site
Aerial Hazard		46° 04.235' N	117° 27.723' W	5,374	Saddle Butte Communication Towers
Camp	Boggan's Spike	46° 02.509' N	117° 15.349' W	1,189	61376 WA-129, Anatone WA 99401
Camp	Grouse Flats Spike	46° 01.979' N	117° 25.072' W	3,583	611-699 Grouse Flat Rd
Camp	Park Road	46° 04.647' N	117° 09.990' W	3,654	990-996 Park Road, Anatone, WA 99401
Dip Site	Boston Dip	46° 01.525' N	117° 27.021' W	3,520	
Dip Site	Kessler Dip	46° 01.050' N	117° 31.953' W	3,591	
Helibase	Cougar	46° 07.702' N	117° 09.859' W	3,334	
Helispot	H-10	46° 01.808' N	117° 18.813' W	1,246	
Helispot	H-2	46° 04.605' N	117° 09.799' W	3,659	Park Road Basecamp
Helispot	H-31	46° 01.063' N	117° 23.542' W	2,827	
Helispot	H-34	46° 01.995' N	117° 24.648' W	3,300	Open 360, no dust abatement, above pink barro
Helispot	H-41	46° 02.436' N	117° 29.984' W	4,173	
Helispot	H-43	46° 04.211' N	117° 27.701' W	5,749	Type 2 approved
Helispot	H-45	46° 04.882' N	117° 27.864' W	4,908	Type 3 Approved. Dust abatement needed.
Helispot	H-47	46° 07.987' N	117° 24.730' W	5,303	Type 2 approved
Helispot	H-49	46° 07.207' N	117° 22.568' W	4,922	
Helispot	H-50	46° 07.135' N	117° 20.078' W	4,594	
Helispot	H-51	46° 07.519' N	117° 28.762' W	6,194	Type 2 Approved. Move vehicles.
Helispot	H-58	46° 03.477' N	117° 20.674' W	2,863	
Helispot	H-62	46° 06.237' N	117° 17.121' W	4,435	
Helispot	H-67	46° 03.845' N	117° 15.972' W	3,024	
Staging Area		46° 03.687' N	117° 20.196' W	2,903	
Staging Area		46° 06.923' N	117° 19.641' W	5,135	
Staging Area	Grande Ronde	46° 01.844' N	117° 19.007' W	1,219	Grande Ronde Staging
Staging Area	Mill Rd	46° 08.045' N	117° 10.239' W	3,393	Intersection of Mill Road and West Mtn Road



1:5
Acr
North American 1983 Datum, Contour Grid