

Air Operations

Battle Mountain Complex

OR973S-000250

8/7/2024

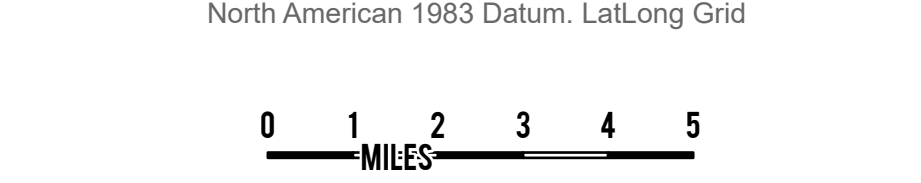
178,120 acres at 08/06/2024 2328 hrs

Incident Name	Acres
NF Owens	4,484
Monkey Creek	178,120

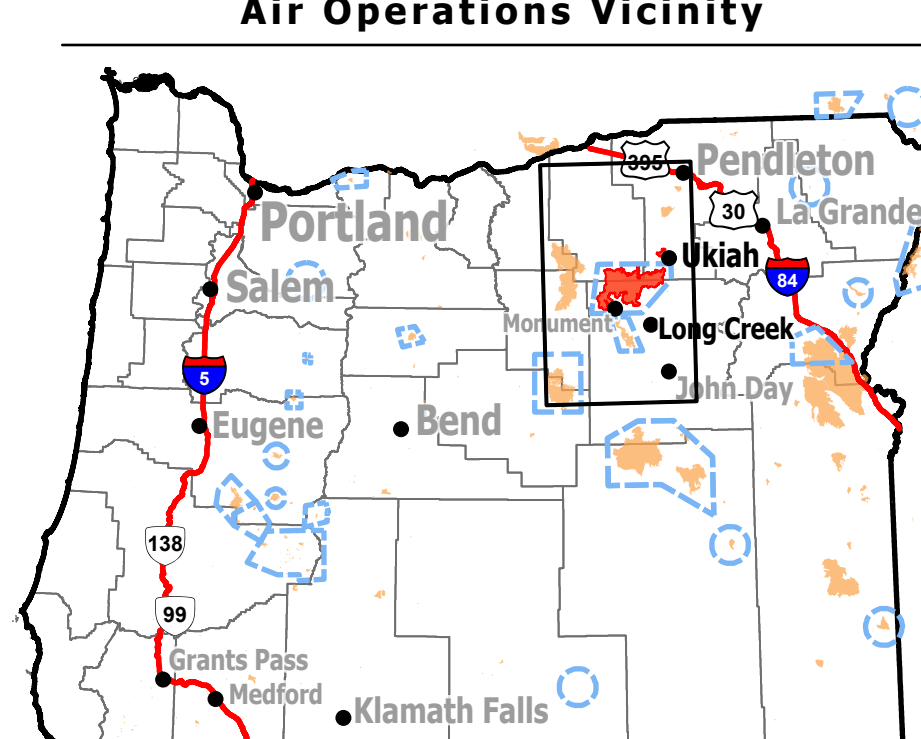


INCIDENT MANAGEMENT TEAM

1:143,000 ODF Team 3 GIS (8/7/2024 0555)
Acres from IR and GPS
North American 1983 Datum, Lat,Long Grid



Air Operations Vicinity



Frequencies BMC	RX	TX
A/A Fixed Wing TR	119.850	
A/A Fixed Wing TR	121.250	
A/A Rotor Wing (Primary)	125.350	
A/A Rotor Wing (Secondary)	126.250	
Air/Ground AG1	169.8125	
Air/Ground AG2	170.0250	
Deck	163.100	
A/G IA-White Net	151.310	TX/RX T 156.7
A/G IA-Blue Net	159.2625	TX/RX T 156.7
A/G IA-38	167.375	
A/G IA-44	167.625	167.375
VME29 (MEDEVAC)	155.3475	TX/RX T 156.7

Frequencies COURTRUCK	RX	TX
COURTRUCK A/A TR	120.6500	
A/A Rotor (Secondary)	169.4625	169.4625

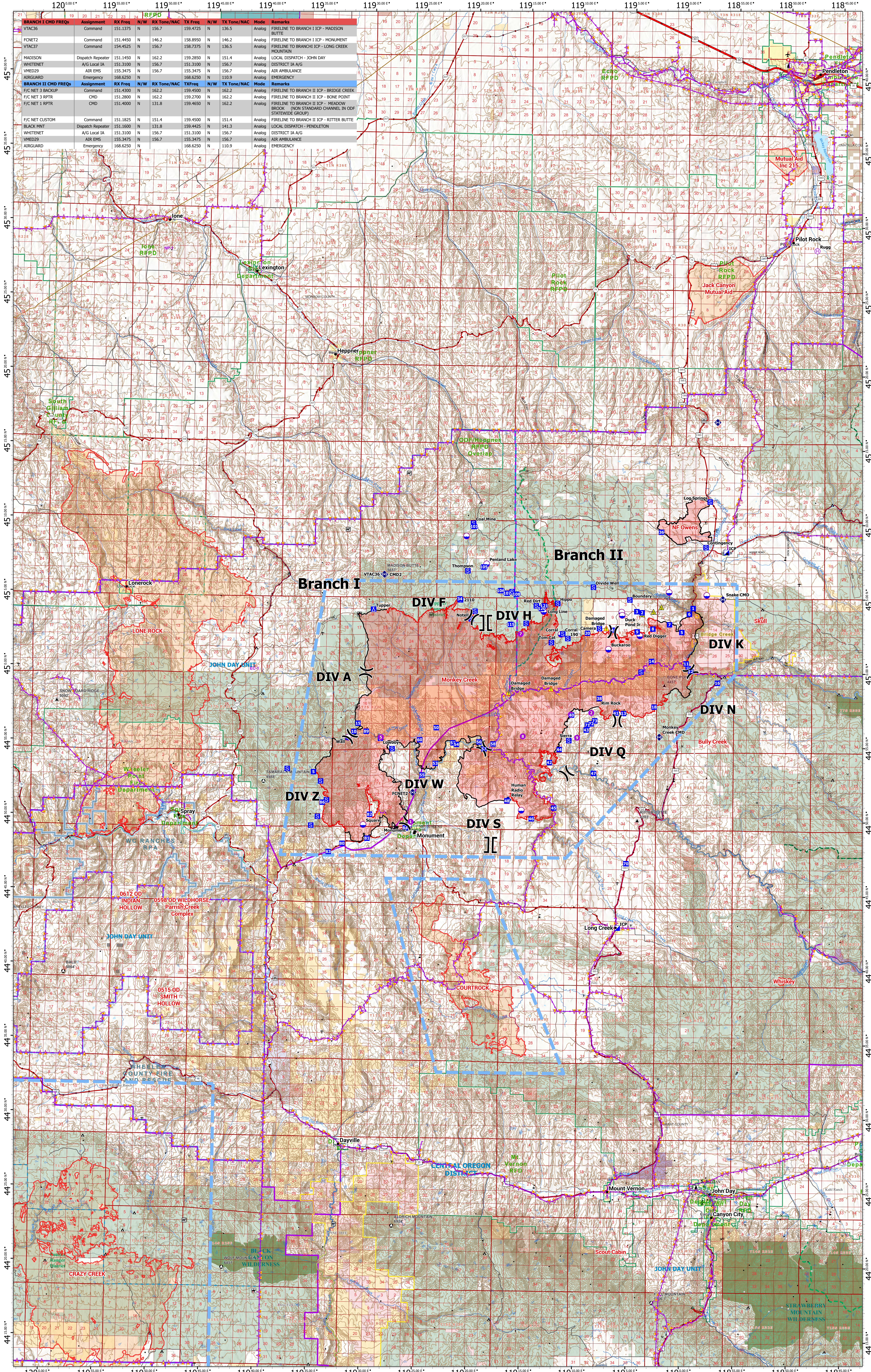


LEGEND

- Fire Perimeter
- Neighboring Fires
- Temporary Flight Restriction
- Aerial Hazard
- Helispot
- Helibase
- Division Break
- Branch Break
- Incident Command Post
- Drop Point
- Camp
- Staging Area
- Repeater
- Safety Zone
- Hazard
- Dip Site

Battle Mountain Complex Waypoints

Waypoint Name	Latitude	Longitude
Waypoint 1	43° 05' 47.7" N	119° 04' 44.4" W
Waypoint 2	43° 05' 24.7" N	119° 07' 32.7" W
Waypoint 3	43° 04' 37.7" N	119° 05' 02.7" W
Waypoint 4	43° 05' 46.7" N	119° 15' 30.7" W
Waypoint 5	43° 05' 56.7" N	119° 07' 32.7" W
Waypoint 6	43° 05' 58.7" N	119° 05' 02.7" W
Waypoint 7	43° 02' 55.7" N	119° 11' 60.7" W
Waypoint 8	43° 05' 54.7" N	119° 25' 00.7" W
Waypoint 9	43° 07' 23.7" N	119° 18' 03.7" W
Waypoint 10	43° 02' 46.7" N	119° 04' 24.7" W
Waypoint 11	44° 49' 31.7" N	119° 30' 21.7" W
Waypoint 12	44° 55' 42.7" N	119° 31' 24.7" W
Waypoint 13	44° 51' 55.7" N	119° 34' 13.7" W
Waypoint 14	44° 51' 55.7" N	119° 34' 13.7" W
Waypoint 15	44° 51' 55.7" N	119° 34' 13.7" W
Waypoint 16	44° 51' 55.7" N	119° 34' 13.7" W
Waypoint 17	44° 51' 55.7" N	119° 34' 13.7" W
Waypoint 18	44° 51' 55.7" N	119° 34' 13.7" W
Waypoint 19	44° 51' 55.7" N	119° 34' 13.7" W
Waypoint 20	44° 51' 55.7" N	119° 34' 13.7" W
Waypoint 21	44° 51' 55.7" N	119° 34' 13.7" W
Waypoint 22	44° 51' 55.7" N	119° 34' 13.7" W
Waypoint 23	44° 51' 55.7" N	119° 34' 13.7" W
Waypoint 24	44° 51' 55.7" N	119° 34' 13.7" W
Waypoint 25	44° 51' 55.7" N	119° 34' 13.7" W
Waypoint 26	44° 51' 55.7" N	119° 34' 13.7" W
Waypoint 27	44° 51' 55.7" N	119° 34' 13.7" W
Waypoint 28	44° 51' 55.7" N	119° 34' 13.7" W
Waypoint 29	44° 51' 55.7" N	119° 34' 13.7" W
Waypoint 30	44° 51' 55.7" N	119° 34' 13.7" W
Waypoint 31	44° 51' 55.7" N	119° 34' 13.7" W
Waypoint 32	44° 51' 55.7" N	119° 34' 13.7" W
Waypoint 33	44° 51' 55.7" N	119° 34' 13.7" W
Waypoint 34	44° 51' 55.7" N	119° 34' 13.7" W
Waypoint 35	44° 51' 55.7" N	119° 34' 13.7" W
Waypoint 36	44° 51' 55.7" N	119° 34' 13.7" W
Waypoint 37	44° 51' 55.7" N	119° 34' 13.7" W
Waypoint 38	44° 51' 55.7" N	119° 34' 13.7" W
Waypoint 39	44° 51' 55.7" N	119° 34' 13.7" W
Waypoint 40	44° 51' 55.7" N	119° 34' 13.7" W
Waypoint 41	44° 51' 55.7" N	119° 34' 13.7" W
Waypoint 42	44° 51' 55.7" N	119° 34' 13.7" W
Waypoint 43	44° 51' 55.7" N	119° 34' 13.7" W
Waypoint 44	44° 51' 55.7" N	119° 34' 13.7" W
Waypoint 45	44° 51' 55.7" N	119° 34' 13.7" W
Waypoint 46	44° 51' 55.7" N	119° 34' 13.7" W
Waypoint 47	44° 51' 55.7" N	119° 34' 13.7" W
Waypoint 48	44° 51' 55.7" N	119° 34' 13.7" W
Waypoint 49	44° 51' 55.7" N	119° 34' 13.7" W
Waypoint 50	44° 51' 55.7" N	119° 34' 13.7" W
Waypoint 51	44° 51' 55.7" N	119° 34' 13.7" W
Waypoint 52	44° 51' 55.7" N	119° 34' 13.7" W
Waypoint 53	44° 51' 55.7" N	119° 34' 13.7" W
Waypoint 54	44° 51' 55.7" N	119° 34' 13.7" W
Waypoint 55	44° 51' 55.7" N	119° 34' 13.7" W
Waypoint 56	44° 51' 55.7" N	119° 34' 13.7" W
Waypoint 57	44° 51' 55.7" N	119° 34' 13.7" W
Waypoint 58	44° 51' 55.7" N	119° 34' 13.7" W
Waypoint 59	44° 51' 55.7" N	119° 34' 13.7" W
Waypoint 60	44° 51' 55.7" N	119° 34' 13.7" W
Waypoint 61	44° 51' 55.7" N	119° 34' 13.7" W
Waypoint 62	44° 51' 55.7" N	119° 34' 13.7" W
Waypoint 63	44° 51' 55.7" N	119° 34' 13.7" W
Waypoint 64	44° 51' 55.7" N	119° 34' 13.7" W
Waypoint 65	44° 51' 55.7" N	119° 34' 13.7" W
Waypoint 66	44° 51' 55.7" N	119° 34' 13.7" W
Waypoint 67	44° 51' 55.7" N	119° 34' 13.7" W
Waypoint 68	44° 51' 55.7" N	119° 34' 13.7" W
Waypoint 69	44° 51' 55.7" N	119° 34' 13.7" W
Waypoint 70	44° 51' 55.7" N	119° 34' 13.7" W
Waypoint 71	44° 51' 55.7" N	119° 34' 13.7" W
Waypoint 72	44° 51' 55.7" N	119° 34' 13.7" W
Waypoint 73	44° 51' 55.7" N	119° 34' 13.7" W
Waypoint 74	44° 51' 55.7" N	119° 34' 13.7" W
Waypoint 75	44° 51' 55.7" N	119° 34' 13.7" W
Waypoint 76	44° 51' 55.7" N	119° 34' 13.7" W
Waypoint 77	44° 51' 55.7" N	119° 34' 13.7" W
Waypoint 78	44° 51' 55.7" N	119° 34' 13.7" W
Waypoint 79	44° 51' 55.7" N	119° 34' 13.7" W
Waypoint 80	44° 51' 55.7" N	119° 34' 13.7" W
Waypoint 81	44° 51' 55.7" N	119° 34' 13.7" W
Waypoint 82	44° 51' 55.7" N	119° 34' 13.7" W
Waypoint 83	44° 51' 55.7" N	119° 34' 13.7" W
Waypoint 84	44° 51' 55.7" N	119° 34' 13.7" W
Waypoint 85	44° 51' 55.7" N	119° 34' 13.7" W
Waypoint 86	44° 51' 55.7" N	119° 34' 13.7" W
Waypoint 87	44° 51' 55.7" N	119° 34' 13.7" W
Waypoint 88	44° 51' 55.7" N	119° 34' 13.7" W
Waypoint 89	44° 51' 55.7" N	119° 34' 13.7" W
Waypoint 90	44° 51' 55.7" N	119° 34' 13.7" W
Waypoint 91	44° 51' 55.7" N	119° 34' 13.7" W
Waypoint 92	44° 51' 55.7" N	119° 34' 13.7" W
Waypoint 93	44° 51' 55.7" N	119° 34' 13.7" W
Waypoint 94	44° 51' 55.7" N	119° 34' 13.7" W
Waypoint 95	44° 51' 55.7" N	119° 34' 13.7" W
Waypoint 96	44° 51' 55.7" N	119° 34' 13.7" W
Waypoint 97	44° 51' 55.7" N	119° 34' 13.7" W
Waypoint 98	44° 51' 55.7" N	119° 34' 13.7" W
Waypoint 99	44° 51' 55.7" N	119° 34' 13.7" W
Waypoint 100	44° 51' 55.7" N	119° 34' 13.7" W



BRANCH I CMD FREQS	Assignment	RX Freq	N/W	RX Tone/NAC	TX Freq	N/W	TX Tone/NAC	Mode	Remarks
VTAC36	Command	151.1375	N	156.7	159.4725	N	136.5	Analog	FIRELINE TO BRANCH I ICP - MADISON BUTTE
FCNET2	Command	151.4450	N	146.2	158.8950	N	146.2	Analog	FIRELINE TO BRANCH I ICP - MONUMENT MOUNTAIN
VTAC37	Command	154.4525	N	156.7	158.7375	N	136.5	Analog	FIRELINE TO BRANCH I ICP - LONG CREEK MOUNTAIN
MADISON	Dispatch Repeater	151.1450	N	162.2	159.2850	N	151.4	Analog	LOCAL DISPATCH - JOHN DAY BUTTE
WHITENET	Dispatch Repeater	151.3100	N	156.7	151.3100	N	156.7	Analog	DISTRICT IA IAG
VME29	AIR EMS	155.3475	N	156.7	155.3475	N	156.7	Analog	AIR AMBULANCE
AIRGUARD	Emergency	168.6250	N	156.7	168.6250	N	110.9	Analog	EMERGENCY
BRANCH II CMD FREQS	Assignment	RX Freq	N/W	RX Tone/NAC	TX Freq	N/W	TX Tone/NAC	Mode	Remarks
FC NET 3 BACKUP	Command	151.4300	N	162.2	159.4500	N	162.2	Analog	FIRELINE TO BRANCH II ICP - BRIDGE CREEK BUTTE
FC NET 1 RPTR	CMD	151.2800	N	162.2	159.2700	N	162.2	Analog	FIRELINE TO BRANCH II ICP - BONE POINT BUTTE
FC NET 1 RPTR	CMD	151.4000	N	131.8	159.4650	N	162.2	Analog	FIRELINE TO BRANCH II ICP - HEADROW BROOK (NON STANDARD CHANNEL IN ODF STATEWIDE GROUP)
FC NET CUSTOM	Command	151.1825	N	151.4	159.4600	N	151.4	Analog	FIRELINE TO BRANCH II ICP - RITTER BUTTE BUTTE
BLACK MNT	Dispatch Repeater	151.1600	N	131.8	159.4625	N	141.3	Analog	LOCAL DISPATCH - PENDLETON
WHITENET	AVG Local IA	151.3100	N	156.7	151.3100	N	156.7	Analog	DISTRICT IA IAG
VME29	AIR EMS	155.3475	N	156.7	155.3475	N	156.7	Analog	AIR AMBULANCE
AIRGUARD	Emergency	168.6250	N	156.7	168.6250	N	110.9	Analog	EMERGENCY