

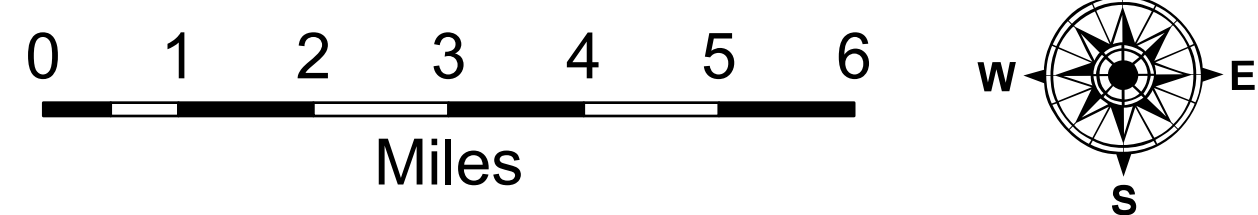
Air Operations

Limepoint

2024-IDPAF-005464

08/08/2024 Day

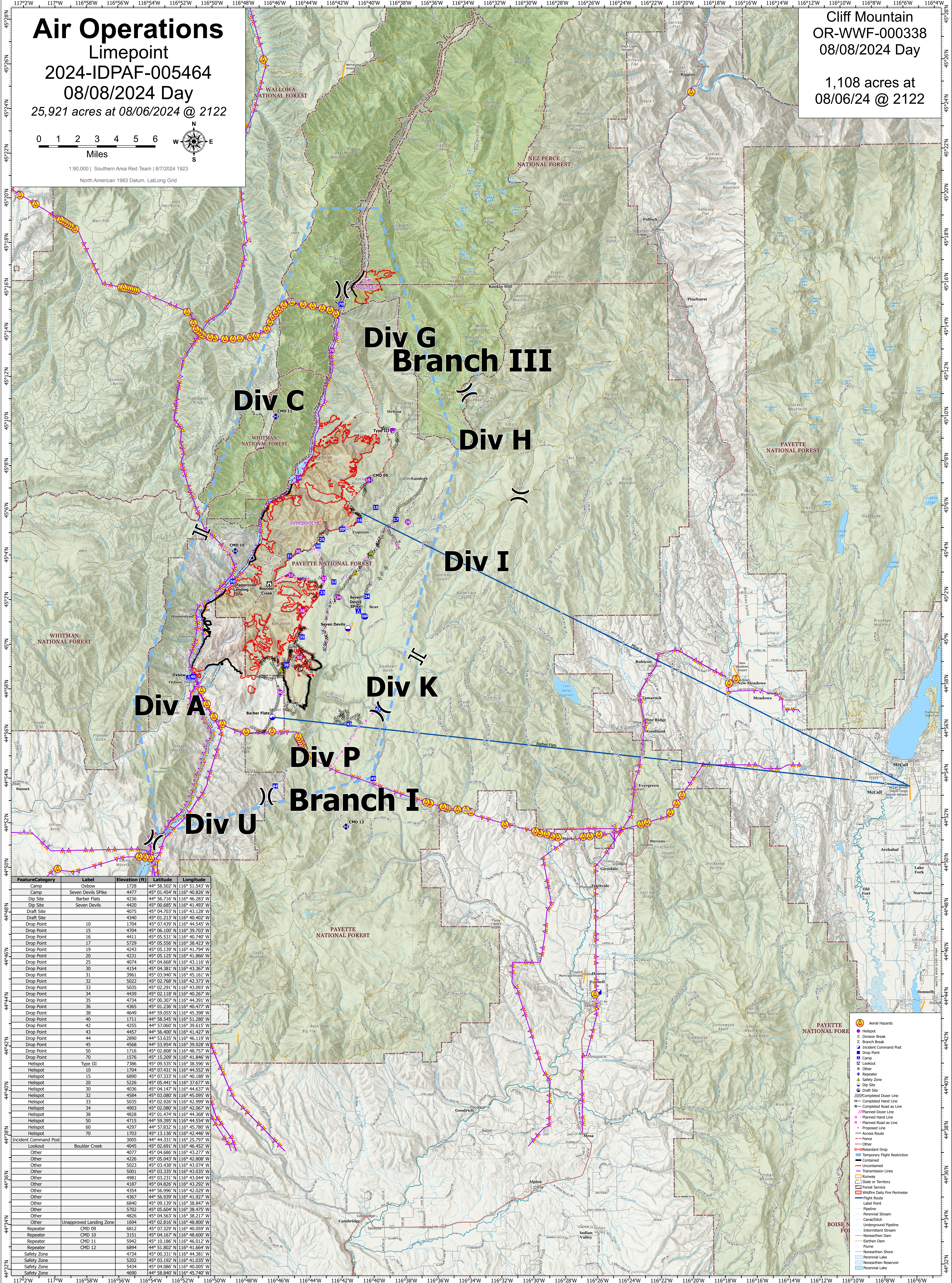
25,921 acres at 08/06/2024 @ 2122



1:90,000 | Southern Area Red Team | 8/7/2024 1923
North American 1983 Datum, Lat/Long Grid

Cliff Mountain
OR-WWF-000338
08/08/2024 Day

1,108 acres at
08/06/24 @ 2122



FeatureCategory	Label	Elevation (ft)	Latitude	Longitude
Camp	Oxbow	1728	44° 58.502' N	116° 51.543' W
Camp	Seven Devils Spike	4477	45° 01.454' N	116° 40.826' W
Dip Site	Barber Flats	4236	44° 56.215' N	116° 46.283' W
Dip Site	Seven Devils	4420	45° 00.685' N	116° 41.493' W
Draft Site		4075	45° 04.703' N	116° 43.128' W
Draft Site		4340	45° 01.213' N	116° 40.402' W
Drop Point	10	1704	45° 07.439' N	116° 44.545' W
Drop Point	15	4704	45° 06.100' N	116° 39.703' W
Drop Point	16	4411	45° 05.531' N	116° 40.740' W
Drop Point	17	5228	45° 05.536' N	116° 38.678' W
Drop Point	19	4243	45° 05.139' N	116° 41.794' W
Drop Point	20	4231	45° 05.125' N	116° 41.866' W
Drop Point	25	4074	45° 04.668' N	116° 43.116' W
Drop Point	30	4154	45° 04.381' N	116° 43.367' W
Drop Point	31	3961	45° 03.940' N	116° 45.161' W
Drop Point	32	5022	45° 02.768' N	116° 42.373' W
Drop Point	33	4437	45° 02.333' N	116° 43.093' W
Drop Point	34	4439	45° 02.118' N	116° 40.267' W
Drop Point	35	4734	45° 00.307' N	116° 44.391' W
Drop Point	36	4365	45° 01.236' N	116° 40.477' W
Drop Point	38	4649	44° 59.055' N	116° 45.398' W
Drop Point	40	1711	44° 58.545' N	116° 51.280' W
Drop Point	42	4255	44° 57.060' N	116° 39.615' W
Drop Point	43	4457	44° 56.600' N	116° 41.422' W
Drop Point	44	2890	44° 53.635' N	116° 46.119' W
Drop Point	45	4568	44° 53.954' N	116° 39.928' W
Drop Point	50	1716	45° 02.808' N	116° 48.757' W
Drop Point	70	1576	45° 15.209' N	116° 41.846' W
Helispot	Type III	7386	45° 09.535' N	116° 38.596' W
Helispot	10	1704	45° 07.431' N	116° 44.552' W
Helispot	15	6890	45° 07.333' N	116° 40.188' W
Helispot	20	5228	45° 05.536' N	116° 38.678' W
Helispot	30	4036	45° 04.147' N	116° 44.637' W
Helispot	32	4584	45° 03.080' N	116° 45.095' W
Helispot	33	5035	45° 02.926' N	116° 42.999' W
Helispot	34	4903	45° 02.080' N	116° 42.067' W
Helispot	38	4828	45° 01.474' N	116° 44.368' W
Helispot	50	4715	44° 59.295' N	116° 44.554' W
Helispot	60	5247	44° 57.824' N	116° 45.055' W
Helispot	70	1703	45° 13.136' N	116° 42.446' W
Incident Command Post		3005	44° 44.331' N	116° 25.797' W
Lookout	Boulder Creek	4045	45° 02.691' N	116° 46.452' W
Other		4077	45° 04.686' N	116° 43.277' W
Other		4226	45° 05.043' N	116° 42.808' W
Other		5023	45° 03.438' N	116° 43.074' W
Other		5001	45° 03.325' N	116° 43.035' W
Other		4981	45° 03.231' N	116° 43.044' W
Other		4187	45° 04.826' N	116° 43.292' W
Other		4354	44° 56.996' N	116° 42.029' W
Other		4367	44° 56.939' N	116° 41.927' W
Other		6840	45° 09.139' N	116° 38.847' W
Other		5702	45° 05.604' N	116° 38.475' W
Other		4626	45° 04.563' N	116° 38.217' W
Other	Unapproved Landing Zone	6294	45° 04.086' N	116° 40.055' W
Repeater	CMD 09	6812	45° 07.329' N	116° 40.059' W
Repeater	CMD 10	3151	45° 04.167' N	116° 48.600' W
Repeater	CMD 11	5942	45° 10.186' N	116° 46.012' W
Repeater	CMD 12	6894	44° 51.802' N	116° 41.664' W
Safety Zone		4734	45° 00.331' N	116° 44.381' W
Safety Zone		5202	45° 03.192' N	116° 41.035' W
Safety Zone		5434	45° 04.086' N	116° 40.055' W
Safety Zone		4690	44° 58.840' N	116° 45.240' W

Symbol	Description
Yellow circle with 'A'	Aerial Hazards
Red 'X'	Division Break
Black 'II'	Branch Break
Blue square with 'I'	Incident Command Post
Blue square	Drop Point
Blue square with 'C'	Camp
Blue circle with 'L'	Lookout
Blue circle with 'R'	Repeater
Blue circle with 'S'	Safety Zone
Blue circle with 'D'	Dip Site
Blue circle with 'A'	Acres Site
Blue circle with 'X'	Completed Dozer Line
Blue circle with 'R'	Completed Road as Line
Blue circle with 'P'	Planned Dozer Line
Blue circle with 'R'	Planned Road as Line
Blue circle with 'P'	Proposed Line
Blue circle with 'A'	Access Route
Blue circle with 'F'	Fence
Blue circle with 'O'	Other
Blue circle with 'R'	Retardant Drop
Blue circle with 'R'	Temporary Flight Restriction
Blue circle with 'C'	Contained
Blue circle with 'U'	Uncountained
Blue circle with 'T'	Transmission Lines
Blue circle with 'R'	Runway
Blue circle with 'S'	State or Territory
Blue circle with 'F'	Forest Service
Blue circle with 'W'	Wildfire Daily Fire Perimeter
Blue circle with 'F'	Flight Route
Blue circle with 'L'	Label Point
Blue circle with 'P'	Pipeline
Blue circle with 'S'	Perennial Stream
Blue circle with 'C'	Canal/Ditch
Blue circle with 'U'	Underground Pipeline
Blue circle with 'I'	Intermittent Stream
Blue circle with 'N'	Nonperennial Dam
Blue circle with 'E'	Earthen Dam
Blue circle with 'P'	Plume
Blue circle with 'N'	Nonperennial Shore
Blue circle with 'P'	Perennial Lake
Blue circle with 'R'	Perennial Reservoir
Blue circle with 'P'	Perennial Lake