

# Air Operations

Limepoint  
2024-IDPAF-005464  
08/08/2024 Day

25,921 acres at 08/06/2024 @ 2122

0.51 2 3 4 5 6

Miles

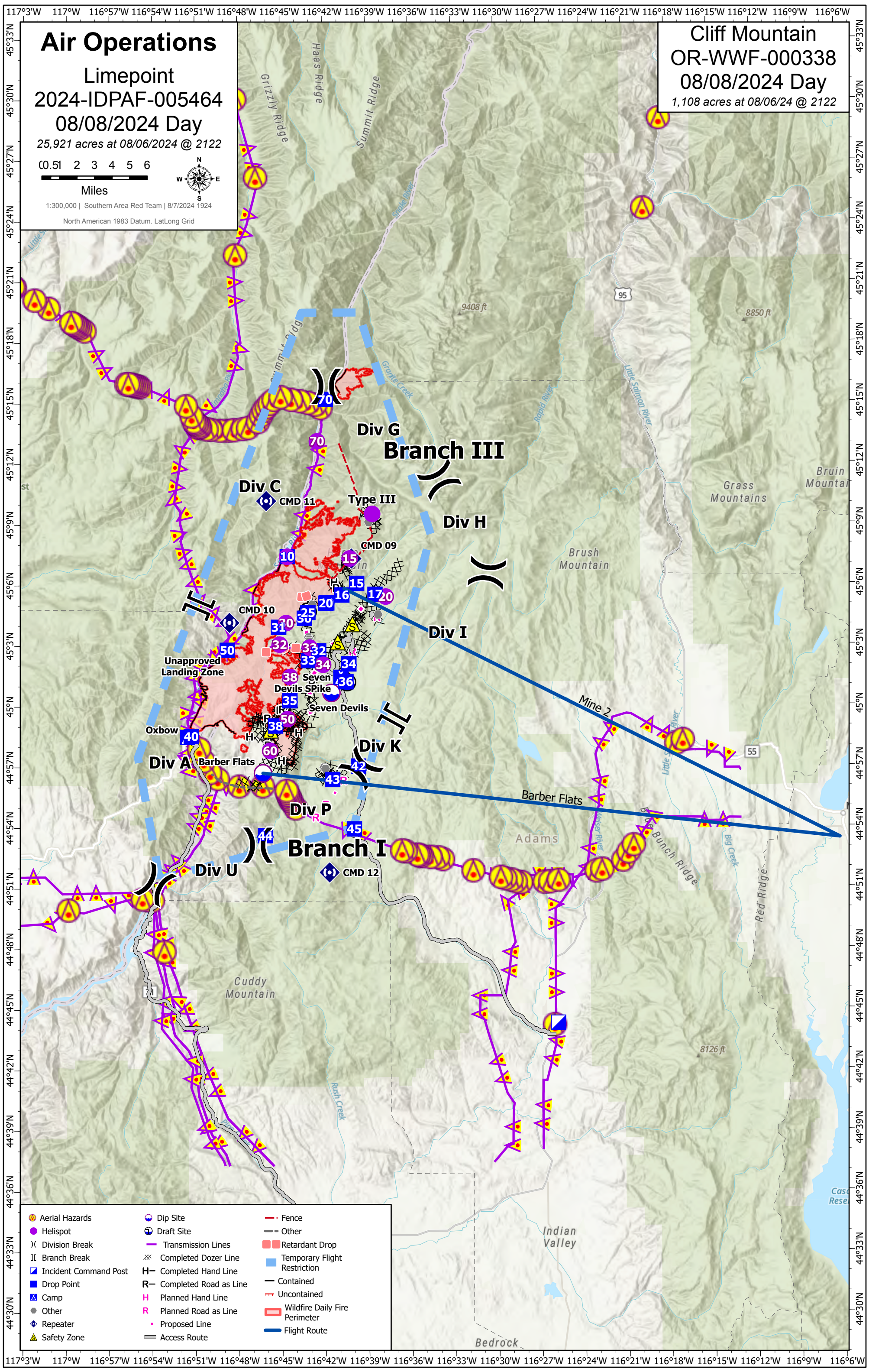
1:300,000 | Southern Area Red Team | 8/7/2024 1924

North American 1983 Datum, LatLong Grid

Cliff Mountain  
OR-WWF-000338

08/08/2024 Day

1,108 acres at 08/06/24 @ 2122



- |                       |                        |                               |
|-----------------------|------------------------|-------------------------------|
| Aerial Hazards        | Dip Site               | Fence                         |
| Helispot              | Draft Site             | Other                         |
| Division Break        | Transmission Lines     | Retardant Drop                |
| Branch Break          | Completed Dozer Line   | Temporary Flight Restriction  |
| Incident Command Post | Completed Hand Line    | Contained                     |
| Drop Point            | Completed Road as Line | Uncontained                   |
| Camp                  | Planned Hand Line      | Wildfire Daily Fire Perimeter |
| Other                 | Planned Road as Line   | Flight Route                  |
| Repeater              | Proposed Line          |                               |
| Safety Zone           | Access Route           |                               |

FeatureCategory	Label	Elevation (ft)	Latitude	Longitude
Camp	Oxbow	1728	44° 58.502' N	116° 51.543' W
Camp	Seven Devils SPIke	4477	45° 01.454' N	116° 40.826' W
Dip Site	Barber Flats	4236	44° 56.716' N	116° 46.283' W
Dip Site	Seven Devils	4420	45° 00.685' N	116° 41.493' W
Draft Site		4075	45° 04.703' N	116° 43.128' W
Draft Site		4340	45° 01.213' N	116° 40.402' W
Drop Point	10	1704	45° 07.439' N	116° 44.545' W
Drop Point	15	4704	45° 06.100' N	116° 39.703' W
Drop Point	16	4411	45° 05.531' N	116° 40.740' W
Drop Point	17	5729	45° 05.556' N	116° 38.423' W
Drop Point	19	4243	45° 05.139' N	116° 41.794' W
Drop Point	20	4231	45° 05.125' N	116° 41.866' W
Drop Point	25	4074	45° 04.668' N	116° 43.116' W
Drop Point	30	4154	45° 04.381' N	116° 43.367' W
Drop Point	31	3961	45° 03.940' N	116° 45.161' W
Drop Point	32	5022	45° 02.768' N	116° 42.373' W
Drop Point	33	5035	45° 02.291' N	116° 43.093' W
Drop Point	34	4439	45° 02.118' N	116° 40.267' W
Drop Point	35	4734	45° 00.307' N	116° 44.391' W
Drop Point	36	4365	45° 01.236' N	116° 40.477' W
Drop Point	38	4649	44° 59.055' N	116° 45.398' W
Drop Point	40	1711	44° 58.545' N	116° 51.280' W
Drop Point	42	4255	44° 57.060' N	116° 39.615' W
Drop Point	43	4457	44° 56.400' N	116° 41.427' W
Drop Point	44	2890	44° 53.635' N	116° 46.119' W
Drop Point	45	4568	44° 53.954' N	116° 39.928' W
Drop Point	50	1716	45° 02.808' N	116° 48.757' W
Drop Point	70	1576	45° 15.209' N	116° 41.846' W
Helispot	Type III	7386	45° 09.535' N	116° 38.596' W
Helispot	10	1704	45° 07.431' N	116° 44.552' W
Helispot	15	6890	45° 07.333' N	116° 40.188' W
Helispot	20	5226	45° 05.441' N	116° 37.677' W
Helispot	30	4036	45° 04.147' N	116° 44.637' W
Helispot	32	4584	45° 03.080' N	116° 45.095' W
Helispot	33	5035	45° 02.926' N	116° 42.999' W
Helispot	34	4903	45° 02.080' N	116° 42.067' W
Helispot	38	4828	45° 01.474' N	116° 44.368' W
Helispot	50	4715	44° 59.395' N	116° 44.554' W
Helispot	60	4297	44° 57.832' N	116° 45.780' W
Helispot	70	1703	45° 13.136' N	116° 42.446' W
Incident Command Post		3005	44° 44.331' N	116° 25.797' W
Lookout	Boulder Creek	4045	45° 02.691' N	116° 46.452' W
Other		4077	45° 04.686' N	116° 43.277' W
Other		4226	45° 05.043' N	116° 42.808' W
Other		5023	45° 03.438' N	116° 43.074' W
Other		5001	45° 03.335' N	116° 43.035' W
Other		4981	45° 03.231' N	116° 43.044' W
Other		4187	45° 04.826' N	116° 43.292' W
Other		4354	44° 56.996' N	116° 42.029' W
Other		4367	44° 56.939' N	116° 41.927' W
Other		6840	45° 09.139' N	116° 38.847' W
Other		5702	45° 05.604' N	116° 38.475' W
Other		4826	45° 04.563' N	116° 38.217' W
Other	Unapproved Landing Zone	1694	45° 02.816' N	116° 48.800' W
Repeater	CMD 09	6812	45° 07.329' N	116° 40.059' W
Repeater	CMD 10	3151	45° 04.167' N	116° 48.600' W
Repeater	CMD 11	5942	45° 10.186' N	116° 46.012' W
Repeater	CMD 12	6894	44° 51.802' N	116° 41.664' W
Safety Zone		4734	45° 00.331' N	116° 44.381' W
Safety Zone		5202	45° 03.192' N	116° 41.035' W
Safety Zone		5434	45° 04.086' N	116° 40.005' W
Safety Zone		4690	44° 58.840' N	116° 45.740' W