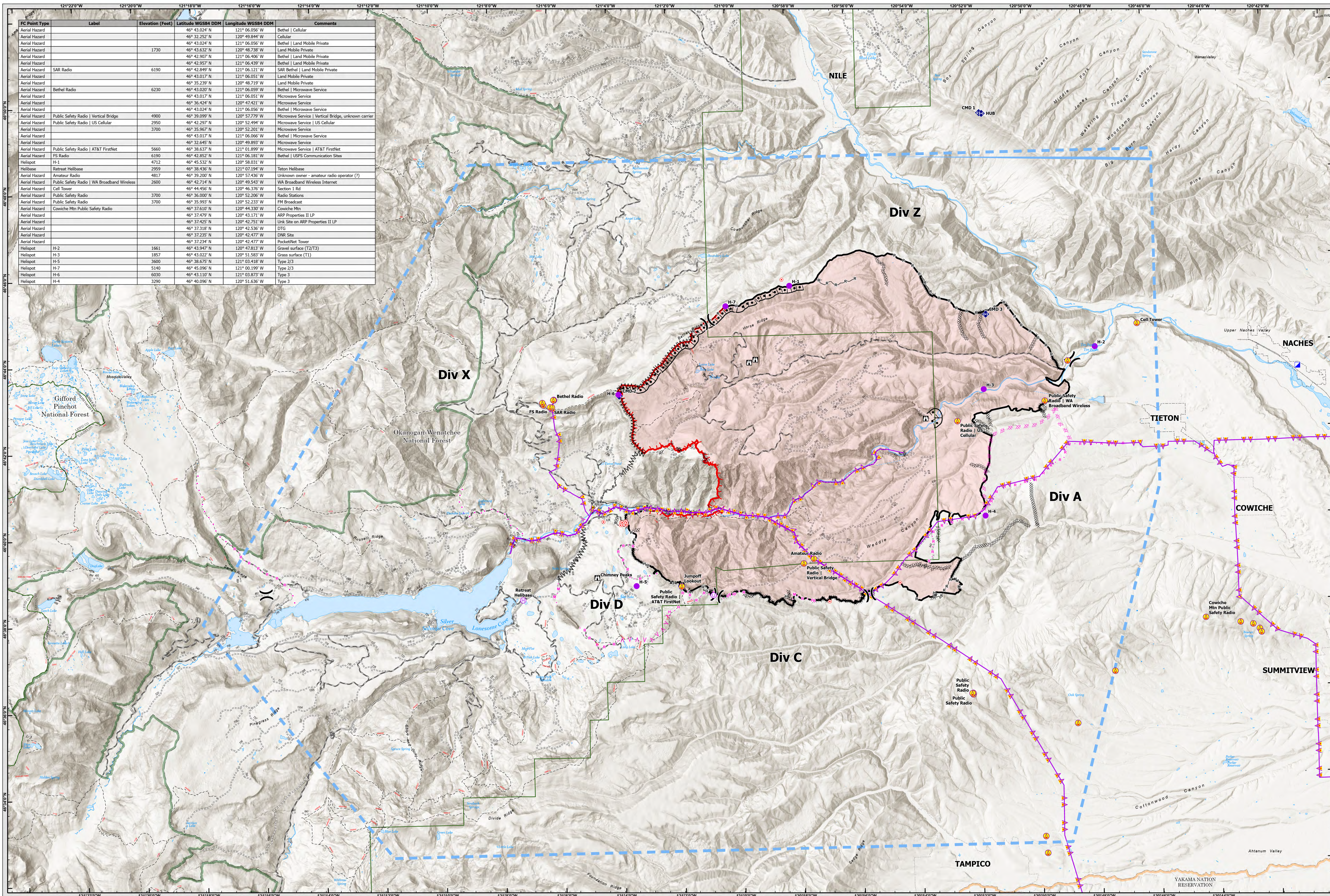


AIR OPERATIONS WA-SES-000477 August 9, 2024



FC Point Type	Label	Elevation (Feet)	Latitude WGS84 DDM	Longitude WGS84 DDM	Comments
Aerial Hazard			46° 43.024' N	121° 06.056' W	Bethel Cellular
Aerial Hazard			46° 43.252' N	120° 49.844' W	Cellular
Aerial Hazard			46° 43.024' N	121° 06.056' W	Bethel Land Mobile Private
Aerial Hazard		1730	46° 43.632' N	120° 48.738' W	Land Mobile Private
Aerial Hazard			46° 42.907' N	121° 06.406' W	Bethel Land Mobile Private
Aerial Hazard			46° 42.957' N	121° 06.439' W	Bethel Land Mobile Private
Aerial Hazard	SAR Radio	6190	46° 42.846' N	121° 06.121' W	SAR Bethel Land Mobile Private
Aerial Hazard			46° 43.017' N	121° 06.051' W	Land Mobile Private
Aerial Hazard			46° 35.239' N	120° 48.719' W	Land Mobile Private
Aerial Hazard	Bethel Radio	6230	46° 43.020' N	121° 06.059' W	Bethel Microwave Service
Aerial Hazard			46° 43.017' N	121° 06.051' W	Microwave Service
Aerial Hazard			46° 36.424' N	120° 47.421' W	Microwave Service
Aerial Hazard			46° 43.024' N	121° 06.056' W	Bethel Microwave Service
Aerial Hazard	Public Safety Radio Vertical Bridge	4900	46° 39.059' N	120° 57.779' W	Microwave Service Vertical Bridge, unknown carrier
Aerial Hazard	Public Safety Radio US Cellular	2950	46° 42.297' N	120° 52.494' W	Microwave Service US Cellular
Aerial Hazard		3700	46° 35.967' N	120° 52.201' W	Microwave Service
Aerial Hazard			46° 43.017' N	121° 06.066' W	Bethel Microwave Service
Aerial Hazard			46° 32.645' N	120° 49.893' W	Microwave Service
Aerial Hazard	Public Safety Radio AT&T FirstNet	5660	46° 38.537' N	121° 01.899' W	Microwave Service AT&T FirstNet
Aerial Hazard	FS Radio	6190	46° 42.852' N	121° 06.181' W	Bethel USFS Communication Status
Helispot	H-1	4712	46° 45.532' N	120° 58.031' W	
Helibase	Retreat Helibase	2959	46° 38.436' N	121° 07.194' W	Teton Helibase
Helibase	Amateur Radio	4817	46° 39.200' N	120° 57.436' W	Unknown owner - amateur radio operator (?)
Aerial Hazard	Public Safety Radio WA Broadband Wireless	2600	46° 42.714' N	120° 49.543' W	WA Broadband Wireless Internet
Aerial Hazard	Cell Tower		46° 44.452' N	120° 46.376' W	Section 1 Rd
Aerial Hazard	Public Safety Radio	3700	46° 36.000' N	120° 52.206' W	Radio Stations
Aerial Hazard	Public Safety Radio	3700	46° 35.993' N	120° 52.233' W	FM Broadcast
Aerial Hazard	Cowiche Mtn Public Safety Radio		46° 37.610' N	120° 44.330' W	Cowiche Mtn
Aerial Hazard			46° 37.479' N	120° 43.171' W	ARP Properties II LP
Aerial Hazard			46° 37.425' N	120° 42.751' W	Unk Site on ARP Properties II LP
Aerial Hazard			46° 37.318' N	120° 42.536' W	OTC
Aerial Hazard			46° 37.235' N	120° 42.477' W	DNR Site
Aerial Hazard			46° 37.234' N	120° 42.477' W	PocketNet Tower
Helispot	H-2	1661	46° 43.947' N	120° 47.813' W	Gravel surface (T2/T3)
Helispot	H-3	1857	46° 43.022' N	120° 51.583' W	Grass surface (T1)
Helispot	H-5	3600	46° 38.676' N	121° 03.418' W	Type 2/3
Helispot	H-7	5140	46° 45.096' N	121° 00.199' W	Type 2/3
Helispot	H-6	6030	46° 43.110' N	121° 03.873' W	Type 3
Helispot	H-4	3290	46° 40.096' N	120° 51.636' W	Type 3

Legend and Logos:

- Labels: Label Point, Event Point, Aerial Hazard, Air Ops, etc.
- Assignment Breaks: Decision Break, Branch Break, etc.
- Operations: Close, Camp, Shanty Area, etc.
- Logistics: Fuel Drop, Medical, etc.
- Communications: Cell Tower, Radio Station, etc.
- Event Line: Completed Burn Line, Planned Burn Line, etc.
- Perimeter Line: FC Line Type, Contained, etc.

Logos: NACHES YCPD #3, US Forest Service, etc.

Datum: NAD 1983 UTM Zone 10N