

Air Operations

Limepoint

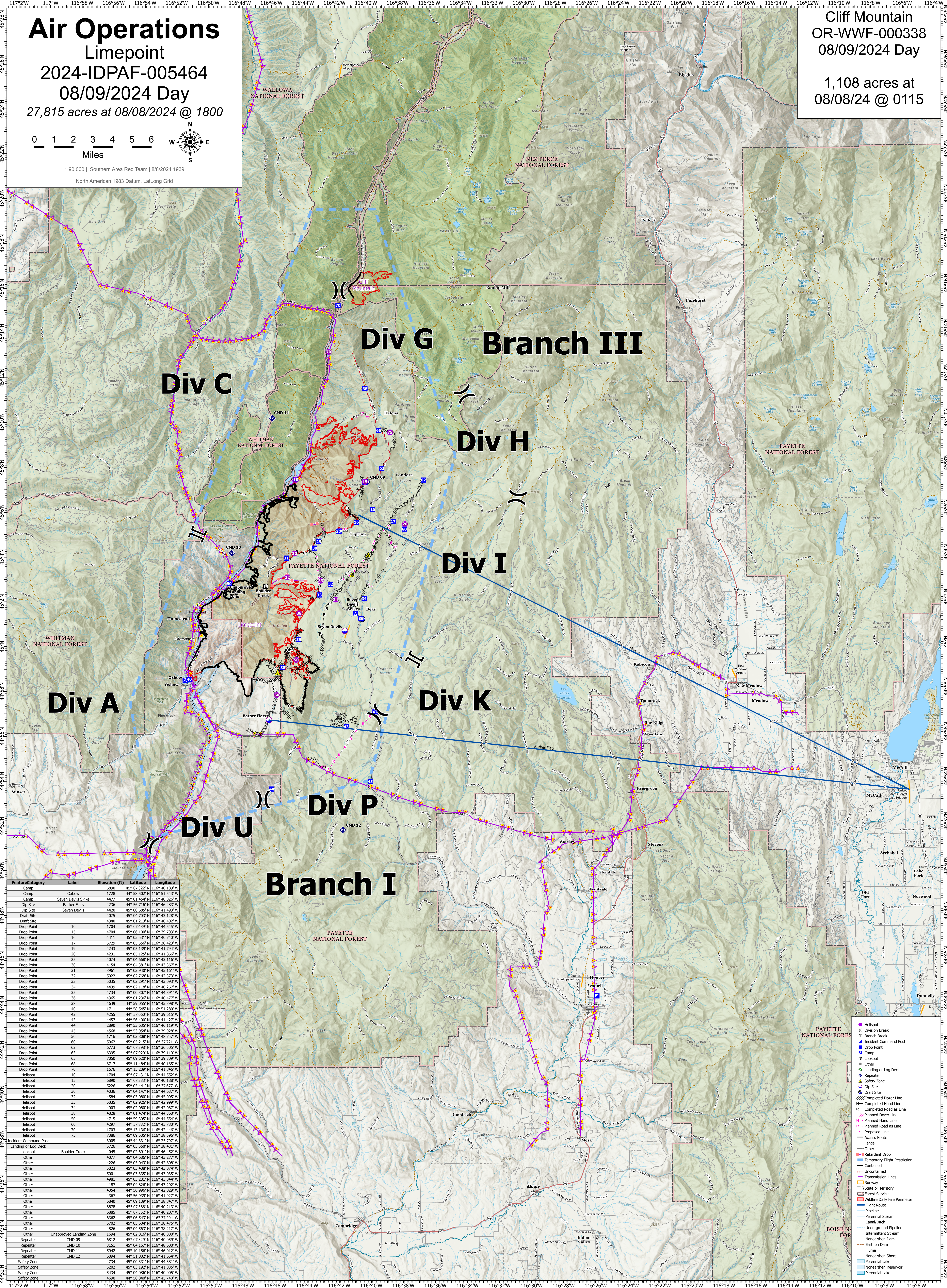
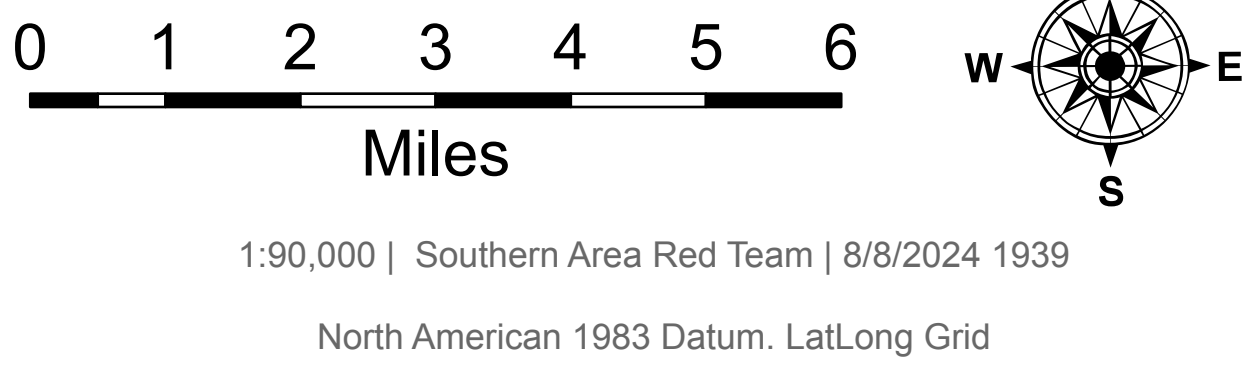
2024-IDPAF-005464

08/09/2024 Day

27,815 acres at 08/08/2024 @ 1800

Cliff Mountain
OR-WWF-000338
08/09/2024 Day

1,108 acres at
08/08/24 @ 0115



Feature/Category	Label	Elevation (ft)	Latitude	Longitude
Camp	Oxbow	6599	45° 07.222' N	116° 40.189' W
Camp	Seven Devils Shike	4477	44° 58.502' N	116° 51.543' W
Dip Site	Barber Flats	4236	44° 01.454' N	116° 40.826' W
Dip Site	Seven Devils	4420	45° 00.585' N	116° 41.853' W
Draft Site		4075	45° 04.703' N	116° 43.128' W
Drop Point		4340	45° 01.213' N	116° 40.402' W
Drop Point	10	1704	45° 07.439' N	116° 44.545' W
Drop Point	15	4704	45° 06.109' N	116° 39.203' W
Drop Point	16	4411	45° 05.531' N	116° 40.740' W
Drop Point	17	5729	45° 05.556' N	116° 38.423' W
Drop Point	19	4243	45° 05.139' N	116° 41.294' W
Drop Point	20	4231	45° 05.125' N	116° 41.866' W
Drop Point	25	4074	45° 04.668' N	116° 43.116' W
Drop Point	30	4154	45° 04.381' N	116° 43.367' W
Drop Point	31	3961	45° 03.940' N	116° 45.161' W
Drop Point	32	5022	45° 02.769' N	116° 42.272' W
Drop Point	33	5035	45° 02.291' N	116° 43.093' W
Drop Point	34	4439	45° 02.118' N	116° 40.267' W
Drop Point	35	4734	45° 00.307' N	116° 44.291' W
Drop Point	36	4265	45° 01.236' N	116° 40.727' W
Drop Point	38	4649	44° 59.055' N	116° 45.398' W
Drop Point	40	1711	44° 58.545' N	116° 51.280' W
Drop Point	42	4255	44° 57.660' N	116° 39.615' W
Drop Point	43	4457	44° 56.480' N	116° 42.827' W
Drop Point	44	2890	44° 53.635' N	116° 46.119' W
Drop Point	45	4568	44° 53.954' N	116° 39.928' W
Drop Point	50	1716	44° 52.898' N	116° 48.257' W
Drop Point	60	5926	45° 05.216' N	116° 37.221' W
Drop Point	62	6773	45° 07.398' N	116° 36.505' W
Drop Point	63	6395	45° 07.929' N	116° 39.119' W
Drop Point	65	7050	45° 09.620' N	116° 39.209' W
Drop Point	68	6717	45° 11.488' N	116° 40.165' W
Drop Point	70	1576	45° 15.209' N	116° 41.846' W
Helispot	10	1704	45° 07.431' N	116° 44.552' W
Helispot	15	6890	45° 07.233' N	116° 40.188' W
Helispot	20	5226	45° 05.841' N	116° 37.677' W
Helispot	30	4036	45° 04.147' N	116° 44.637' W
Helispot	32	4584	45° 03.080' N	116° 45.095' W
Helispot	33	5035	45° 02.296' N	116° 42.999' W
Helispot	34	4903	45° 02.080' N	116° 42.867' W
Helispot	38	4828	45° 01.474' N	116° 44.388' W
Helispot	50	4715	44° 59.395' N	116° 44.554' W
Helispot	60	4297	44° 57.832' N	116° 40.188' W
Helispot	70	1703	45° 13.136' N	116° 42.446' W
Helispot	75	7386	45° 09.535' N	116° 38.596' W
Incident Command Post		3005	44° 44.331' N	116° 25.297' W
Landing or Log Deck		5726	45° 05.590' N	116° 38.433' W
Lookout	Boulder Creek	4045	45° 02.691' N	116° 46.452' W
Other		4077	45° 04.686' N	116° 43.277' W
Other		4226	45° 05.043' N	116° 42.808' W
Other		5023	45° 03.389' N	116° 43.074' W
Other		5001	45° 03.335' N	116° 43.035' W
Other		4981	45° 03.231' N	116° 43.044' W
Other		4187	45° 04.826' N	116° 43.292' W
Other		4354	44° 56.996' N	116° 43.289' W
Other		4367	44° 56.939' N	116° 41.927' W
Other		6840	45° 09.139' N	116° 38.847' W
Other		6678	45° 07.366' N	116° 40.213' W
Other		6885	45° 07.252' N	116° 40.207' W
Other		6362	45° 06.543' N	116° 37.204' W
Other		5702	45° 05.604' N	116° 38.475' W
Other		4826	45° 04.563' N	116° 38.217' W
Other		1694	45° 02.616' N	116° 48.800' W
Repeater	CMD 09	6812	45° 07.329' N	116° 40.059' W
Repeater	CMD 10	3151	45° 04.167' N	116° 48.600' W
Repeater	CMD 11	5942	45° 10.186' N	116° 46.012' W
Repeater	CMD 12	6904	44° 51.802' N	116° 41.654' W
Safety Zone		4734	45° 00.331' N	116° 44.381' W
Safety Zone		5202	45° 03.192' N	116° 41.035' W
Safety Zone		5434	45° 04.086' N	116° 40.055' W
Safety Zone		4690	45° 05.588' N	116° 43.289' W

Symbol	Description
●	Helispot
X	Division Break
	Branch Break
■	Incident Command Post
■	Drop Point
■	Camp
○	Lookout
○	Other
○	Landing or Log Deck
○	Repeater
○	Safety Zone
○	Dip Site
○	Draft Site
○	Completed Dozer Line
○	Planned Dozer Line
○	Planned Hand Line
○	Planned Road as Line
○	Proposed Line
○	Access Route
○	Fence
○	Retardant Drop
○	Temporary Flight Restriction
○	Contained
○	Uncontained
○	Transmission Lines
○	Barren
○	State or Territory
○	Forest Service
○	Wildfire Daily Fire Perimeter
○	Right-of-Way
○	Pipeline
○	Perennial Stream
○	Canal/Ditch
○	Underground Pipeline
○	Intermittent Stream
○	Nonperennial Stream
○	Flume
○	Nonperennial Shore
○	Perennial Lake
○	Nonperennial Reservoir
○	Perennial Lake