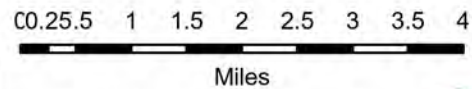
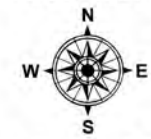


# Pilot

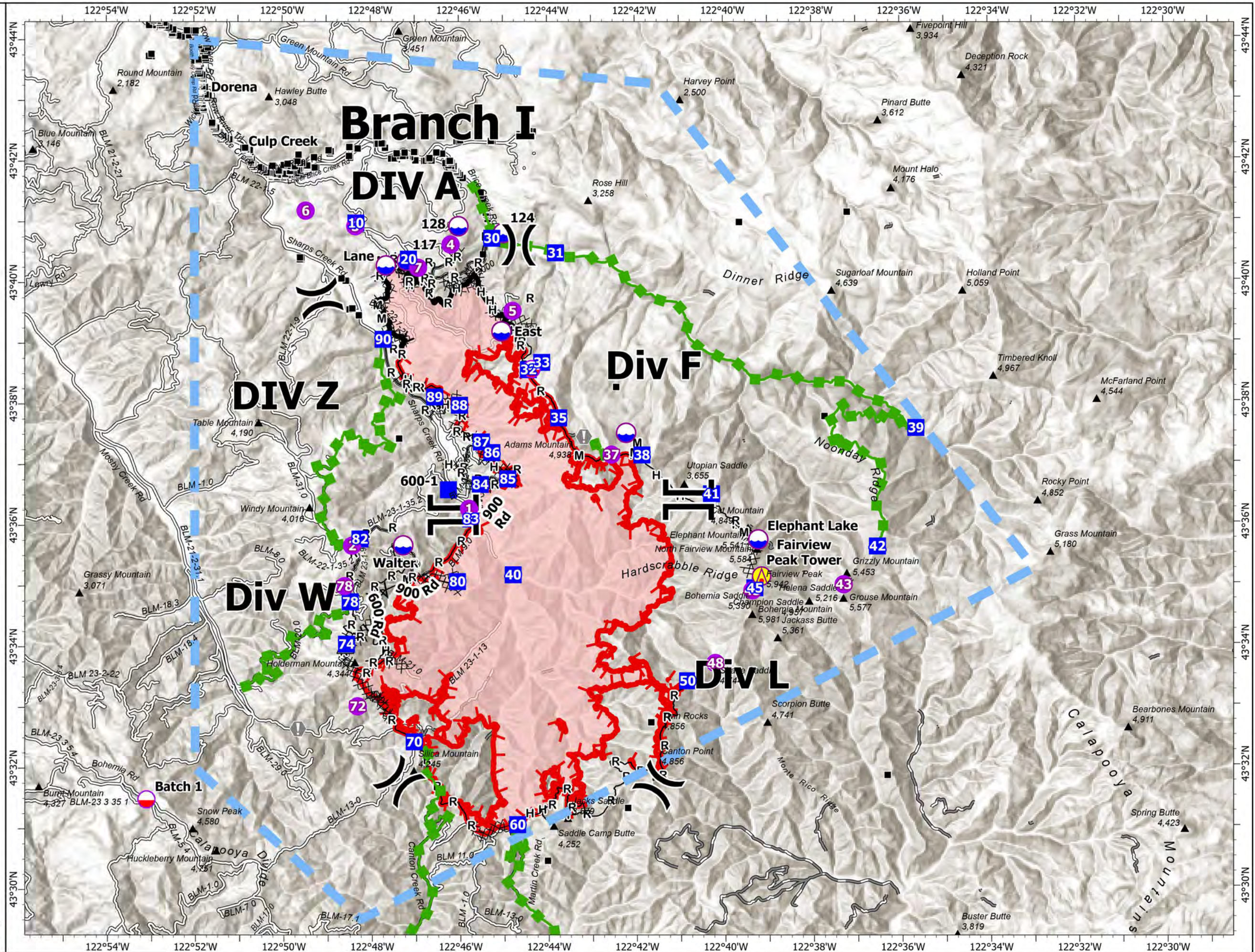
Cottage Grove - Lane 1  
OR-771S-000028  
8/9/2024 Day

18,498 acres at 20240808 @ 0115

- Structure
- ⚠ Aerial Hazard
- 🚒 Mobile Retardant Base
- 🌀 Helispot
- ) ( Division Break
- || Branch Break
- 📍 Drop Point
- ⚠ Value at Risk
- ⚠ Safety Zone
- 📍 Dip Site
- ⊗ Completed Dozer Line
- ⚡ Completed Fuel Break
- H Completed Hand Line
- M Completed Mixed Construction Line
- R Completed Road as Line
- 🟢 Escape Route
- 🔵 Temporary Flight Restriction
- ⬜ Contained
- 🔴 Uncontained
- 🔴 Wildfire Daily Fire Perimeter
- 🛣 Road
- 🛣 Road, Paved
- 🛣 Road, Dirt/Gravel



1:110,000 | NC & FL CIMT | 8/8/2024 2053  
Acres from IR  
North American 1983 Datum, LatLong Grid





FC Point Type	Label	Latitude WGS84 DDM	Longitude WGS84 DDM
Aerial Hazard	Fairview Peak Tower	43° 35.134' N	122° 39.161' W
Branch Break		43° 36.160' N	122° 46.147' W
Branch Break		43° 36.396' N	122° 40.809' W
Dip Site		43° 37.503' N	122° 42.214' W
Dip Site	117	43° 40.349' N	122° 47.184' W
Dip Site	124	43° 40.800' N	122° 45.000' W
Dip Site	128	43° 40.916' N	122° 46.012' W
Dip Site	East	43° 39.180' N	122° 45.042' W
Dip Site	Elephant Lake	43° 35.739' N	122° 39.234' W
Dip Site	Lane	43° 40.272' N	122° 47.658' W
Dip Site	Walter	43° 35.660' N	122° 47.281' W
Division Break		43° 39.729' N	122° 49.161' W
Division Break		43° 32.233' N	122° 46.919' W
Division Break		43° 31.762' N	122° 41.632' W
Division Break		43° 40.605' N	122° 44.643' W
Drop Point	10	43° 40.973' N	122° 48.337' W
Drop Point	20	43° 40.374' N	122° 47.148' W
Drop Point	30	43° 40.715' N	122° 45.256' W
Drop Point	31	43° 40.472' N	122° 43.811' W
Drop Point	32	43° 38.549' N	122° 44.434' W
Drop Point	33	43° 38.668' N	122° 44.134' W
Drop Point	35	43° 37.754' N	122° 43.752' W
Drop Point	38	43° 37.138' N	122° 41.859' W
Drop Point	39	43° 37.571' N	122° 35.657' W
Drop Point	40	43° 35.171' N	122° 44.793' W
Drop Point	41	43° 36.493' N	122° 40.288' W
Drop Point	42	43° 35.622' N	122° 36.539' W
Drop Point	45	43° 34.903' N	122° 39.338' W
Drop Point	50	43° 33.414' N	122° 40.843' W
Drop Point	60	43° 31.053' N	122° 44.708' W
Drop Point	600-1	43° 36.574' N	122° 46.253' W

FC Point Type	Label	Latitude WGS84 DDM	Longitude WGS84 DDM
Drop Point	70	43° 32.422' N	122° 47.043' W
Drop Point	74	43° 34.034' N	122° 48.571' W
Drop Point	78	43° 34.731' N	122° 48.483' W
Drop Point	80	43° 35.061' N	122° 46.055' W
Drop Point	82	43° 35.767' N	122° 48.260' W
Drop Point	83	43° 36.093' N	122° 45.748' W
Drop Point	84	43° 36.659' N	122° 45.530' W
Drop Point	85	43° 36.750' N	122° 44.908' W
Drop Point	86	43° 37.185' N	122° 45.268' W
Drop Point	87	43° 37.360' N	122° 45.504' W
Drop Point	88	43° 37.965' N	122° 45.998' W
Drop Point	89	43° 38.103' N	122° 46.560' W
Drop Point	90	43° 39.055' N	122° 47.725' W
Helispot	1	43° 36.259' N	122° 45.789' W
Helispot	2	43° 35.656' N	122° 48.439' W
Helispot	3	43° 40.919' N	122° 48.349' W
Helispot	37	43° 37.144' N	122° 42.554' W
Helispot	4	43° 40.613' N	122° 46.191' W
Helispot	43	43° 34.994' N	122° 37.306' W
Helispot	45	43° 34.887' N	122° 39.346' W
Helispot	48	43° 33.705' N	122° 40.214' W
Helispot	5	43° 39.518' N	122° 44.791' W
Helispot	6	43° 41.178' N	122° 49.475' W
Helispot	7	43° 40.233' N	122° 46.929' W
Helispot	72	43° 33.010' N	122° 48.321' W
Helispot	78	43° 34.990' N	122° 48.611' W
Mobile Retardant Base		43° 38.560' N	122° 44.364' W
Mobile Retardant Base	Batch 1	43° 31.484' N	122° 53.114' W
Safety Zone		43° 34.021' N	122° 48.598' W
Value at Risk		43° 32.643' N	122° 49.672' W
Value at Risk		43° 37.443' N	122° 43.181' W