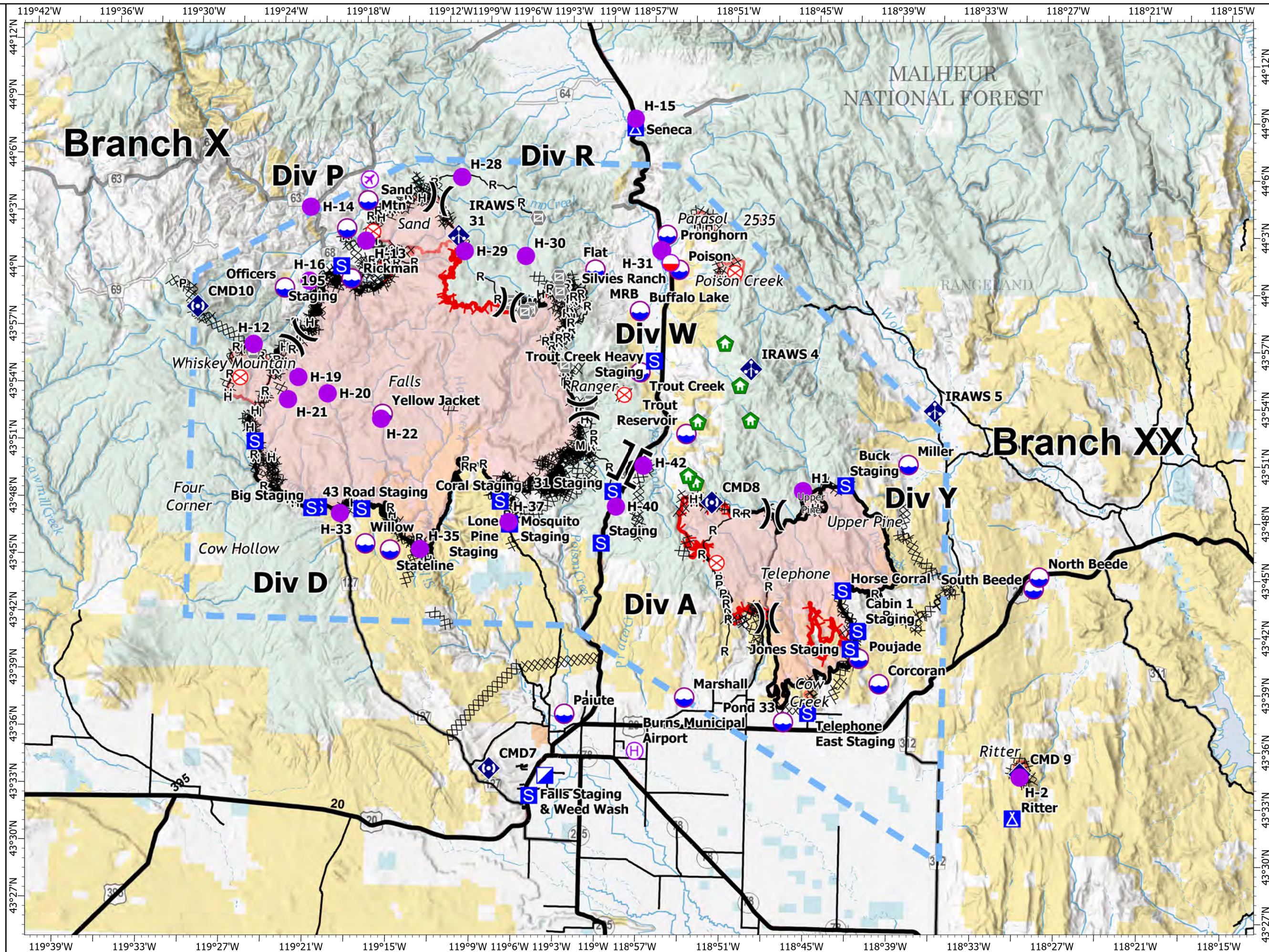


# Pilot Falls

OR-MAF-002502  
8/9/2024 Day

147,403 acres on 8/7/24 @ 1945 PDT

- Airstrip or Airport
- Mobile Retardant Base
- Helispot
- Helibase
- UAS Launch and Recovery
- Division Break
- Branch Break
- Incident Command Post
- Camp
- Staging Area
- Fire Origin
- Gate
- Structure Wrap
- Mobile Weather Unit
- Repeater
- Dip Site
- Completed Dozer Line
- Completed Hand Line
- Completed Mixed Construction Line
- Completed Plow Line
- Completed Road as Line
- Temporary Flight Restriction
- Contained
- Uncontained
- County Roads
- Highways



Incident Name	FC Point Type	Label	Latitude WGS84 DDM	Longitude WGS84 DDM
Falls	Airstrip or Airport		44° 05.120' N	119° 17.556' W
Falls	Camp	Seneca	44° 08.186' N	118° 58.318' W
Falls	Dip Site	Willow	43° 46.030' N	119° 17.161' W
Falls	Dip Site	Stateline	43° 45.740' N	119° 15.361' W
Falls	Dip Site	Yellow Jacket	43° 52.840' N	119° 16.161' W
Falls	Dip Site	Pronghorn	44° 02.610' N	118° 55.811' W
Falls	Dip Site	Poison	44° 00.793' N	118° 54.893' W
Falls	Dip Site	Buffalo Lake	43° 58.583' N	118° 57.673' W
Falls	Dip Site	Trout Creek	43° 55.372' N	118° 57.536' W
Falls	Dip Site	Trout Reservoir	43° 52.192' N	118° 54.101' W
Falls	Dip Site	Officers	43° 59.328' N	119° 23.499' W
Falls	Dip Site	Paiute	43° 37.368' N	119° 02.482' W
Falls	Dip Site	Rickman	43° 59.902' N	119° 18.684' W
Falls	Dip Site	Corcoran	43° 39.283' N	118° 39.818' W
Falls	Dip Site		44° 02.517' N	119° 19.110' W
Falls	Dip Site	Flat	44° 00.699' N	119° 01.010' W
Falls	Gate		43° 53.709' N	119° 01.184' W
Falls	Gate		43° 59.504' N	119° 03.545' W
Falls	Gate		44° 00.263' N	119° 03.630' W
Falls	Gate		43° 58.882' N	119° 07.124' W
Falls	Gate		43° 58.506' N	119° 05.653' W
Falls	Gate		43° 58.390' N	119° 06.058' W
Falls	Gate		43° 55.644' N	119° 03.047' W
Falls	Gate		44° 03.341' N	119° 05.239' W
Falls	Gate		43° 55.950' N	119° 25.685' W
Falls	Helibase	Burns Municipal Airport	43° 35.510' N	118° 57.321' W
Falls	Helispot	H-21	43° 53.478' N	119° 23.045' W
Falls	Helispot	H-33	43° 47.591' N	119° 19.055' W
Falls	Helispot	H-19	43° 54.656' N	119° 22.345' W
Falls	Helispot	H-20	43° 53.840' N	119° 20.188' W
Falls	Helispot	H-40	43° 48.298' N	118° 59.109' W
Falls	Helispot	H-22	43° 52.588' N	119° 16.264' W
Falls	Helispot	H-37	43° 47.350' N	119° 06.851' W
Falls	Helispot	H-14	44° 03.600' N	119° 21.781' W
Falls	Helispot	H-42	43° 50.478' N	118° 57.167' W
Falls	Helispot	H-35	43° 45.819' N	119° 13.202' W
Falls	Helispot	H-15	44° 08.663' N	118° 58.307' W
Falls	Helispot	H-28	44° 05.375' N	119° 10.860' W
Falls	Helispot	H-30	44° 01.322' N	119° 06.076' W
Falls	Helispot	H-31	44° 01.752' N	118° 56.176' W
Falls	Helispot	H-12	43° 56.325' N	119° 25.649' W
Falls	Helispot	H-13	44° 01.902' N	119° 17.703' W

Incident Name	FC Point Type	Label	Latitude WGS84 DDM	Longitude WGS84 DDM
Falls	Helispot	H-16	43° 59.720' N	119° 21.737' W
Falls	Helispot	H-29	44° 01.495' N	119° 10.531' W
Falls	Mobile Retardant Base	Silvies Ranch MRB	44° 01.198' N	118° 55.533' W
Falls	UAS Launch and Recovery		44° 01.794' N	118° 56.188' W
Poison Creek	Fire Origin		44° 00.693' N	118° 50.832' W
Ranger	Fire Origin		43° 54.168' N	118° 58.682' W
Ritter	Camp	Ritter	43° 32.352' N	118° 30.029' W
Ritter	Dip Site	South Beede	43° 44.419' N	118° 28.775' W
Ritter	Dip Site	North Beede	43° 45.033' N	118° 28.400' W
Ritter	Helispot	H-2	43° 34.527' N	118° 29.548' W
Sand	Dip Site	Sand Mtn	44° 04.018' N	119° 17.629' W
Sand	Fire Origin		44° 02.395' N	119° 17.204' W
Telephone	Dip Site	Pond 33	43° 37.187' N	118° 46.669' W
Telephone	Dip Site	Poujade	43° 40.595' N	118° 41.300' W
Telephone	Dip Site	Miller	43° 50.810' N	118° 37.990' W
Telephone	Dip Site	Marshall	43° 38.369' N	118° 53.824' W
Telephone	Fire Origin		43° 45.463' N	118° 51.703' W
Telephone	Structure Wrap		43° 52.986' N	118° 49.485' W
Telephone	Structure Wrap		43° 49.655' N	118° 53.355' W
Telephone	Structure Wrap		43° 50.012' N	118° 53.894' W
Telephone	Structure Wrap		43° 52.836' N	118° 53.292' W
Telephone	Structure Wrap		43° 54.798' N	118° 50.294' W
Telephone	Structure Wrap		43° 56.988' N	118° 51.448' W
Upper Pine	Helispot	H1	43° 49.328' N	118° 45.578' W
Whiskey Mountain	Fire Origin		43° 54.552' N	119° 26.548' W